



RICK ALEXANDER, MARKET STRATEGIST
ZANER GROUP

1/3/2018

HAPPY NEW YEAR! NO CHANGE.TALK-WINTER WHEAT KILL? SLUGISH EXPORTS.S.AMERICA WEATHER OK

Higher closes for oats, corn, soybeans, soybean meal and soybean oil along with Minneapolis, Kansas City and Chicago wheat while just lower for rough rice. The only possible change in weather news is possible winter wheat kill which is what's mainly behind the wheat complex rally. Otherwise South America is okay. Exports remain well behind last year but wheat has been holding its own lately after increasing for a while. The wheat complex continues overall to be in a downtrend with Minneapolis still has its nearest resistance above 620 needing a close over 660 for starters. KC and Chicago had their best highs and closes since Dec.4th with the former in resistance first needing a close above 450. Chicago has been testing its September's lows recently with success so far also needing a close over 450 to give hope to bulls wherever you may be. Oats continue to look like a major top is forming while still needing to hold the 240 area and successful so far, on the other hand rough rice had its worst low and close since Nov. 14th filling a gap from that same date. This is also a critical support area to hold. I need to see a close over 1285 for see a possible bull market beginning. Corn has retraced higher for the last couple of weeks while remaining in the same area since last August. A close over 375 remains important while reaching four dollars seems to be more of a dream at this time with the 360 - 400 range remaining a formidable looking resistance area that I don't expect to be penetrated any time soon. Beans and meal have popped up this week with both, so far, holding critical price areas (beans-950, meal-315). Oil just had its worst low since June 26th but at least settled higher in REVERSAL TYPE ACTION also bouncing off of a strong looking support area. SELL SIGNALS FOR MINNEAPOLIS, KANSAS CITY AND CHICAGO WHEAT ALONG WITH CORN, SOYBEANS, SOYBEAN OIL AND OATS. For additional charts, quotes, news, commentary & more, sign up for a FREE 30 -day trial to markethead.com.

MWH18 - Spring Wheat - Daily Candlestick Chart



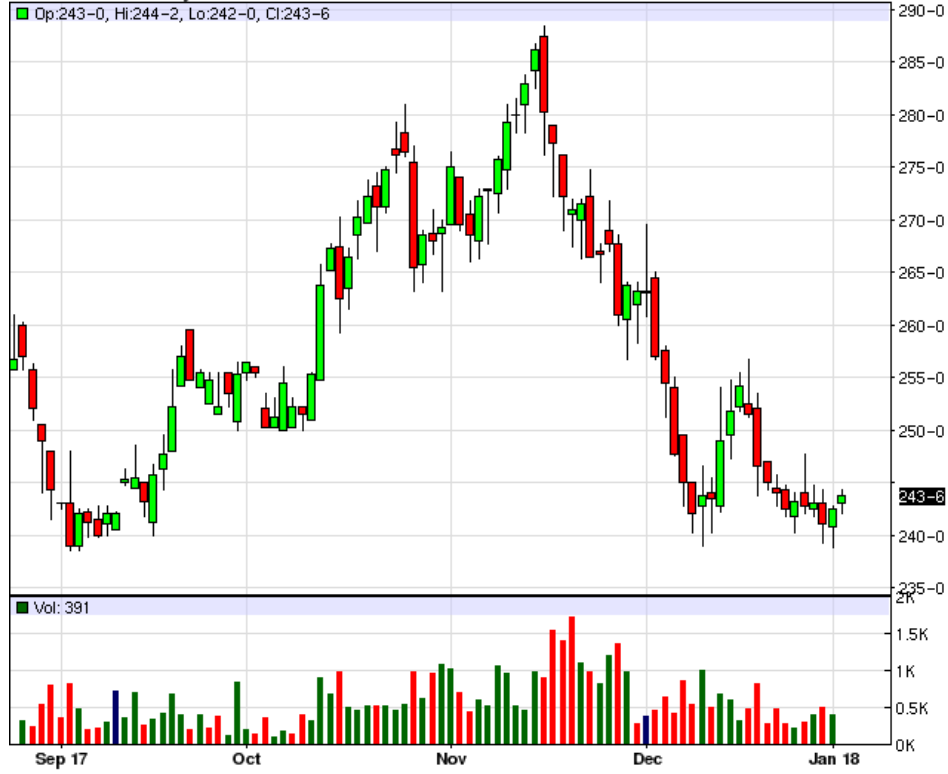
KEH18 - Hard Red Wheat - Daily Candlestick Chart



ZWH18 - Wheat - Daily Candlestick Chart



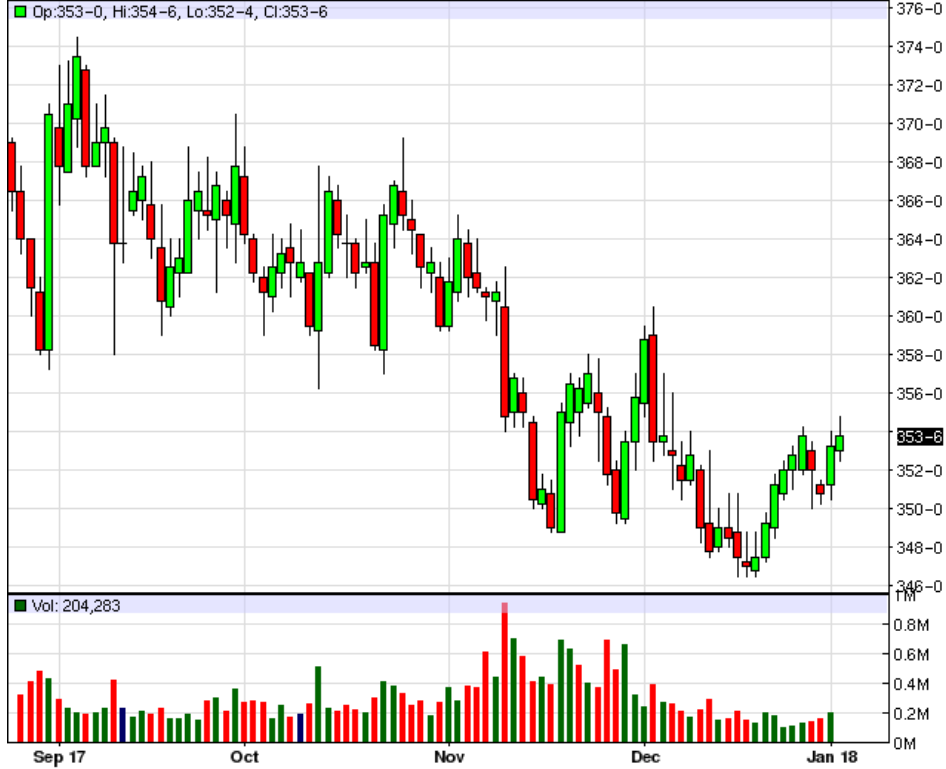
ZOH18 - Oats - Daily Candlestick Chart



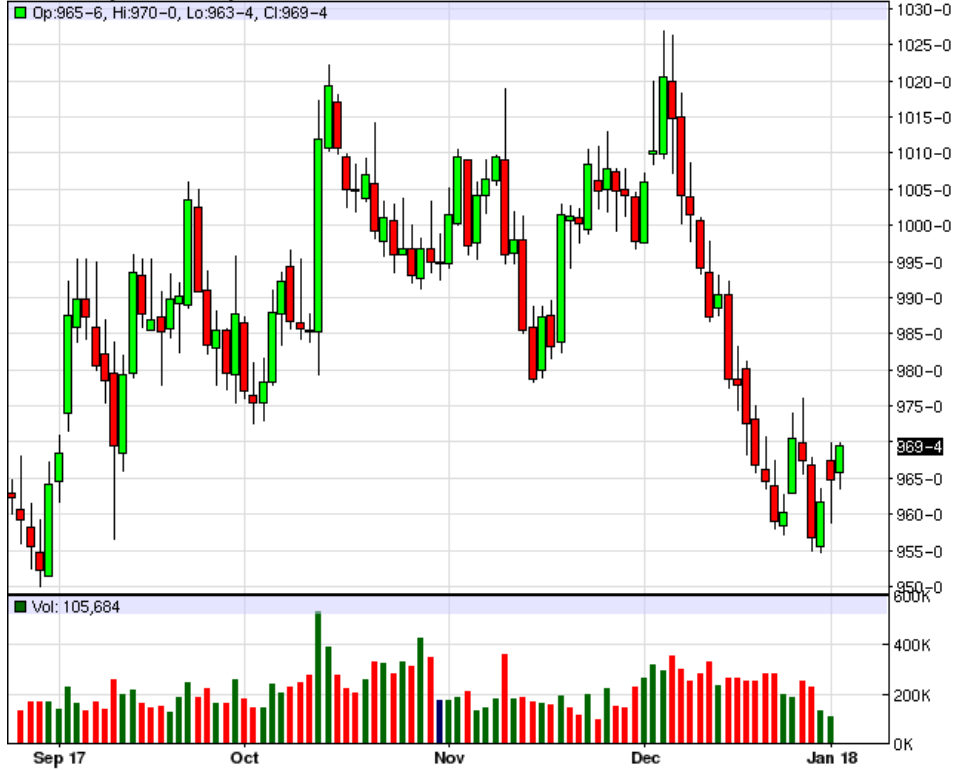
ZRH18 - Rough Rice - Daily Candlestick Chart



ZCH18 - Corn - Daily Candlestick Chart



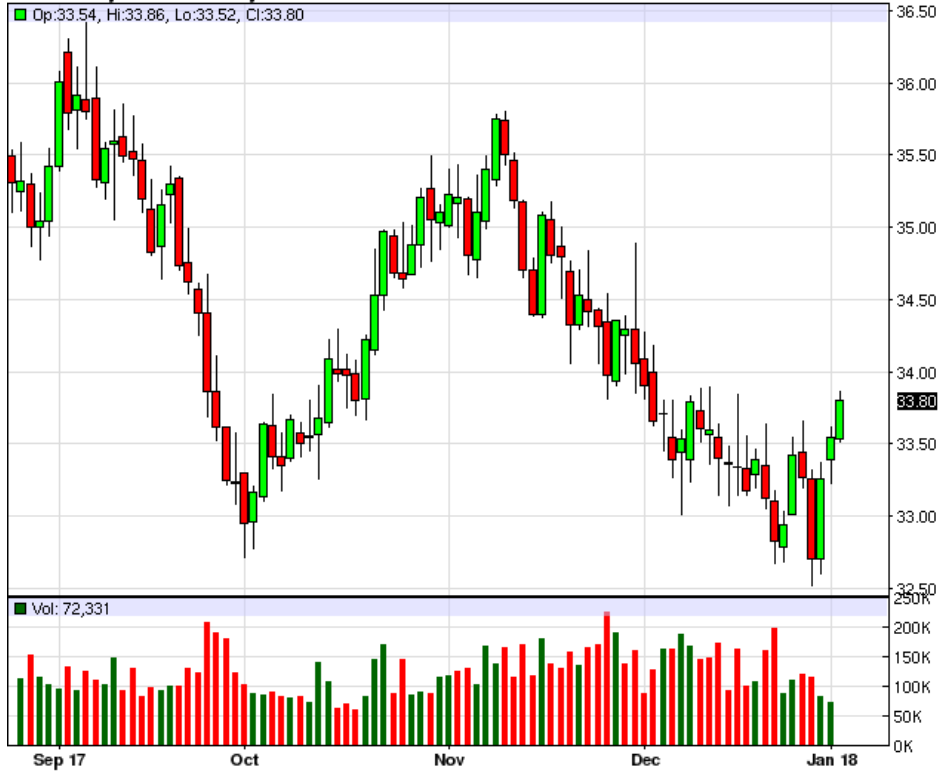
ZSH18 - Soybeans - Daily Candlestick Chart



ZMH18 - Soybean Meal - Daily Candlestick Chart



ZLH18 - Soybean Oil - Daily Candlestick Chart



To read more economic research reports like this one or subscribe to the mailing list, visit www.zaner.com.

THIS MATERIAL IS CONVEYED AS A SOLICITATION FOR ENTERING INTO A DERIVATIVES TRANSACTION.

THIS MATERIAL HAS BEEN PREPARED BY A ZANER BROKER WHO PROVIDES RESEARCH MARKET COMMENTARY AND TRADE RECOMMENDATIONS AS PART OF HIS OR HER SOLICITATION FOR ACCOUNTS AND SOLICITATION FOR TRADES; HOWEVER, ZANER DOES NOT MAINTAIN A RESEARCH DEPARTMENT AS DEFINED IN CFTC RULE 1.71. ZANER, ITS PRINCIPALS, BROKERS AND EMPLOYEES MAY TRADE IN DERIVATIVES FOR THEIR OWN ACCOUNTS OR FOR THE ACCOUNTS OF OTHERS. DUE TO VARIOUS FACTORS (SUCH AS RISK TOLERANCE, MARGIN REQUIREMENTS, TRADING OBJECTIVES, SHORT TERM VS. LONG TERM STRATEGIES, TECHNICAL VS. FUNDAMENTAL MARKET ANALYSIS, AND OTHER FACTORS) SUCH TRADING MAY RESULT IN THE INITIATION OR LIQUIDATION OF POSITIONS THAT ARE DIFFERENT FROM OR CONTRARY TO THE OPINIONS AND RECOMMENDATIONS CONTAINED THEREIN.

THE RISK OF LOSS IN TRADING FUTURES CONTRACTS OR COMMODITY OPTIONS CAN BE SUBSTANTIAL, AND THEREFORE INVESTORS SHOULD UNDERSTAND THE RISKS INVOLVED IN TAKING LEVERAGED POSITIONS AND MUST ASSUME RESPONSIBILITY FOR THE RISKS ASSOCIATED WITH SUCH INVESTMENTS AND FOR THEIR RESULTS. PAST PERFORMANCE IS NOT NECESSARILY INDICATIVE OF FUTURE PERFORMANCE.

150 S Wacker Dr, Suite 2350 · Chicago, IL 60606 · Direct: 312-277-0050 Fax: 312-277-0150 · info@zaner.com

Copyright © 2010 Zaner Group LLC. All Rights Reserved.