

MIDWEST MARKET SOLUTIONS, INC.

"THE LEADING EDGE IN COMMODITIES"

327 BROADWAY
YANKTON, SOUTH DAKOTA 57078
866-203-9655
605-260-3063 FAX
WWW.MIDWESTMARKETSOLUTIONS.COM



THE MARKET INSIDER NEWSLETTER

January 4, 2010

By: Brian Hoops, President
Midwest Market Solutions, Inc.

VISIT OUR WEBSITE AT www.midwestmarketsolutions.com FOR MORE INFORMATION.

Inside This Issue:

WHAT TO EXPECT IN JANUARY	2
CORN OUTLOOK	3,4
SOYBEAN OUTLOOK	5-7
WHEAT OUTLOOK	8-11
LIVE CATTLE OUTLOOK	12
FEEDER CATTLE OUTLOOK	13
LEAN HOG OUTLOOK	14
NEWS	15
NEWS	16
WEATHER	17
CALENDAR OF EVENTS	18
MARGIN REQUIREMENTS	19
COMPANY INFO	20
DISCLAIMER	20



WHEAT



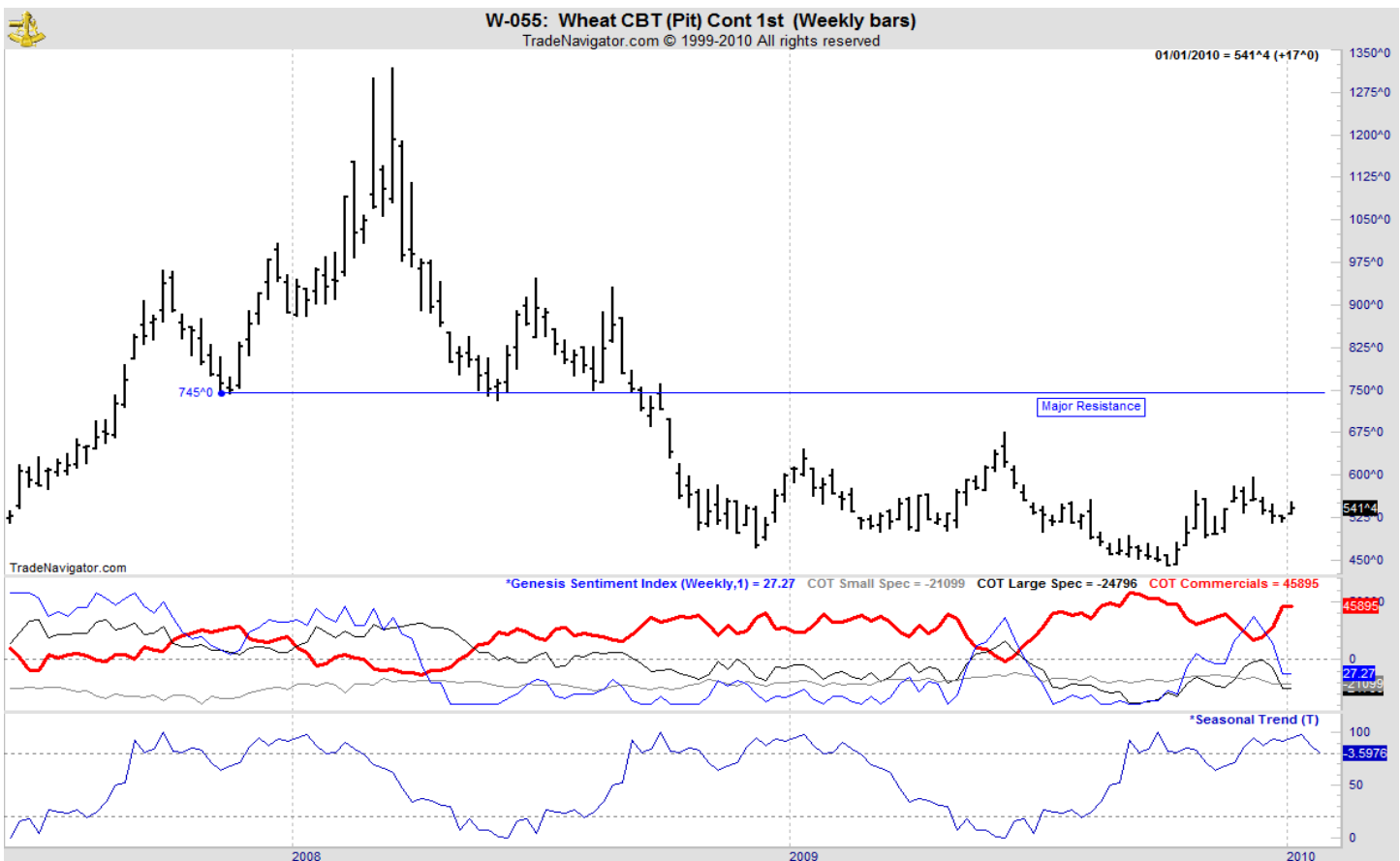
ANALYSIS

For the week, Chicago wheat closed \$.17 higher; Kansas City wheat \$.14 3/4 higher and Minneapolis wheat \$.13 3/4 higher. The winter wheat crop has entered dormancy and crop ratings are very high. Winter wheat ratings are at 63% g/e, 1% behind last year at this time. With high wheat ratings on the new crop and very slow demand, producers should be making sales of wheat on rallies that are inspired by fund demand. The weekly export sales report showed net sales of 370,300 metric tons were up 67 percent from the previous week and 23 percent from prior 4-week average. Increases were reported for unknown destinations (78,500 MT), the Philippines (52,600 MT), South Korea (51,200 MT), Cuba (49,500 MT), and Mexico (49,300 MT). Decreases were reported for Thailand (300 MT). Exports of 294,100 MT were down 10 percent from the previous week and 13 percent from the prior 4-week average. The primary destinations were Japan (114,300 MT), Mexico (49,700 MT), Thailand (47,200 MT), South Korea (29,600 MT), and Cuba (29,500 MT). The annual export pace remains well behind last year's pace. This year's exports stand at 586 mb vs. 801 mb a year ago. The U.S. need to export 12.55 mb each week to meet the USDA forecast of 875 mb.

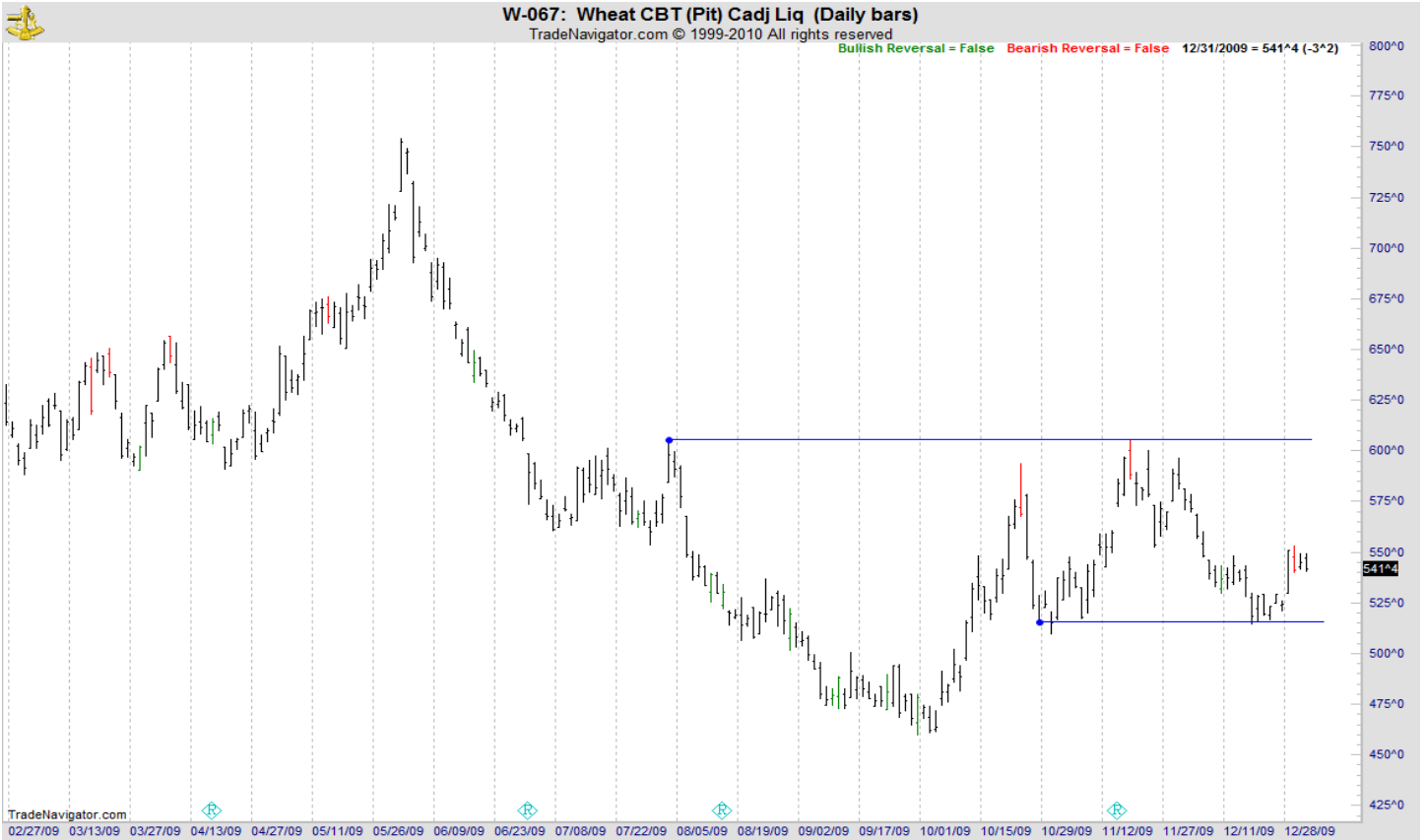
STRATEGY & OUTLOOK

Producers should be 100% sold of their 2009 crop. Producers should begin to scale into 2010 crop sales at \$6.05, \$6.40 and \$6.75 off the July Kansas City contract.

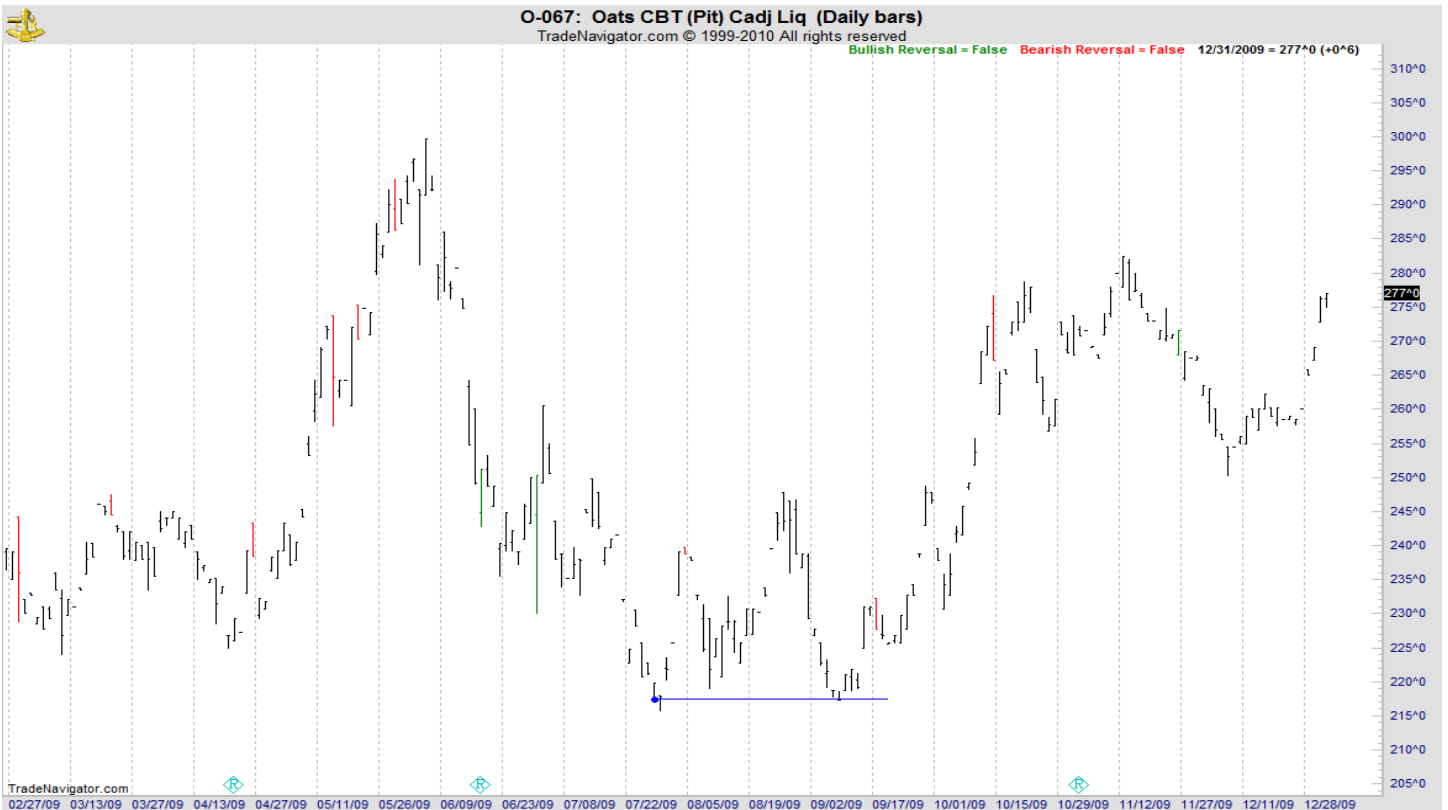
WEEKLY CHICAGO



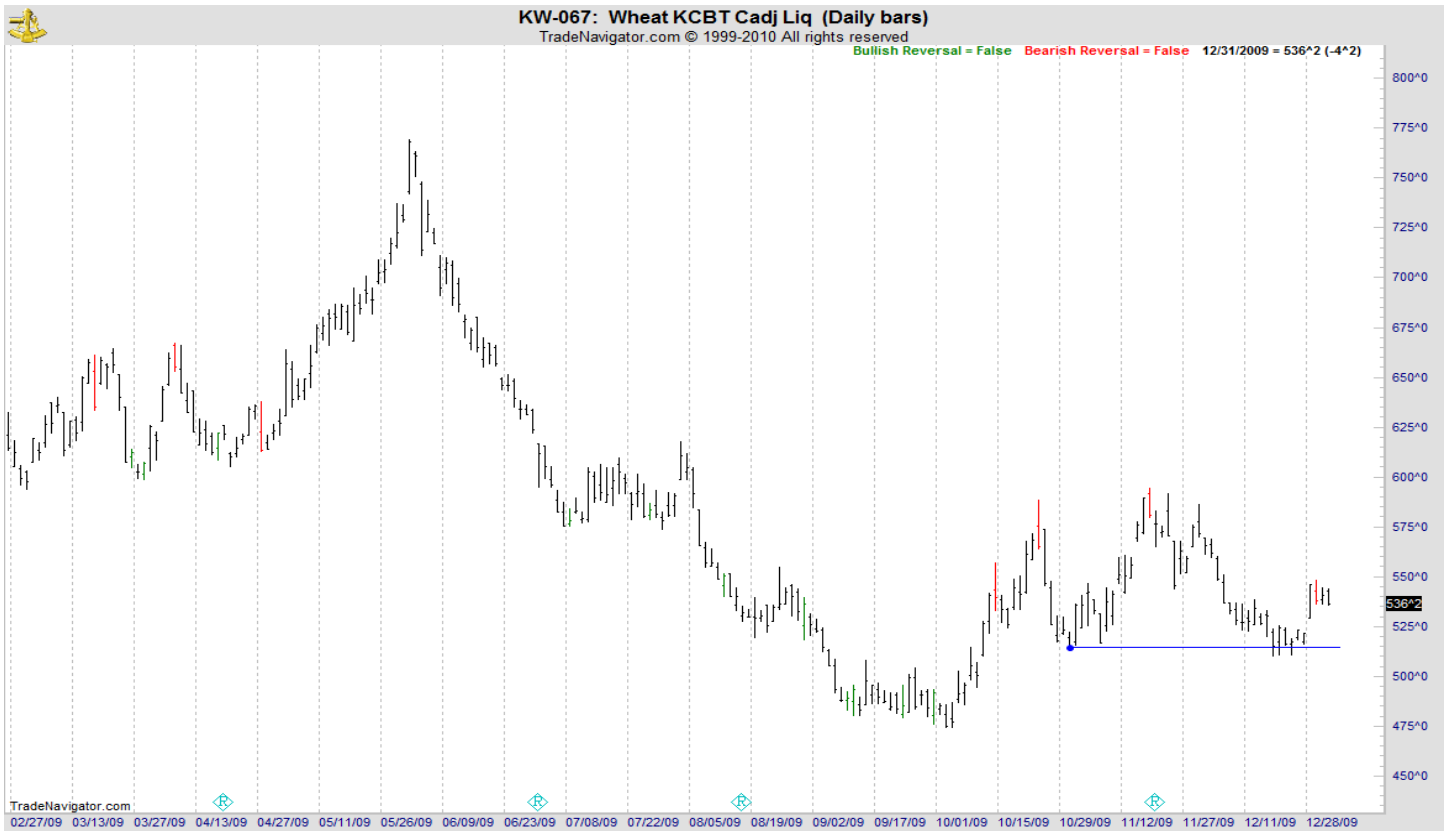
CHICAGO WHEAT



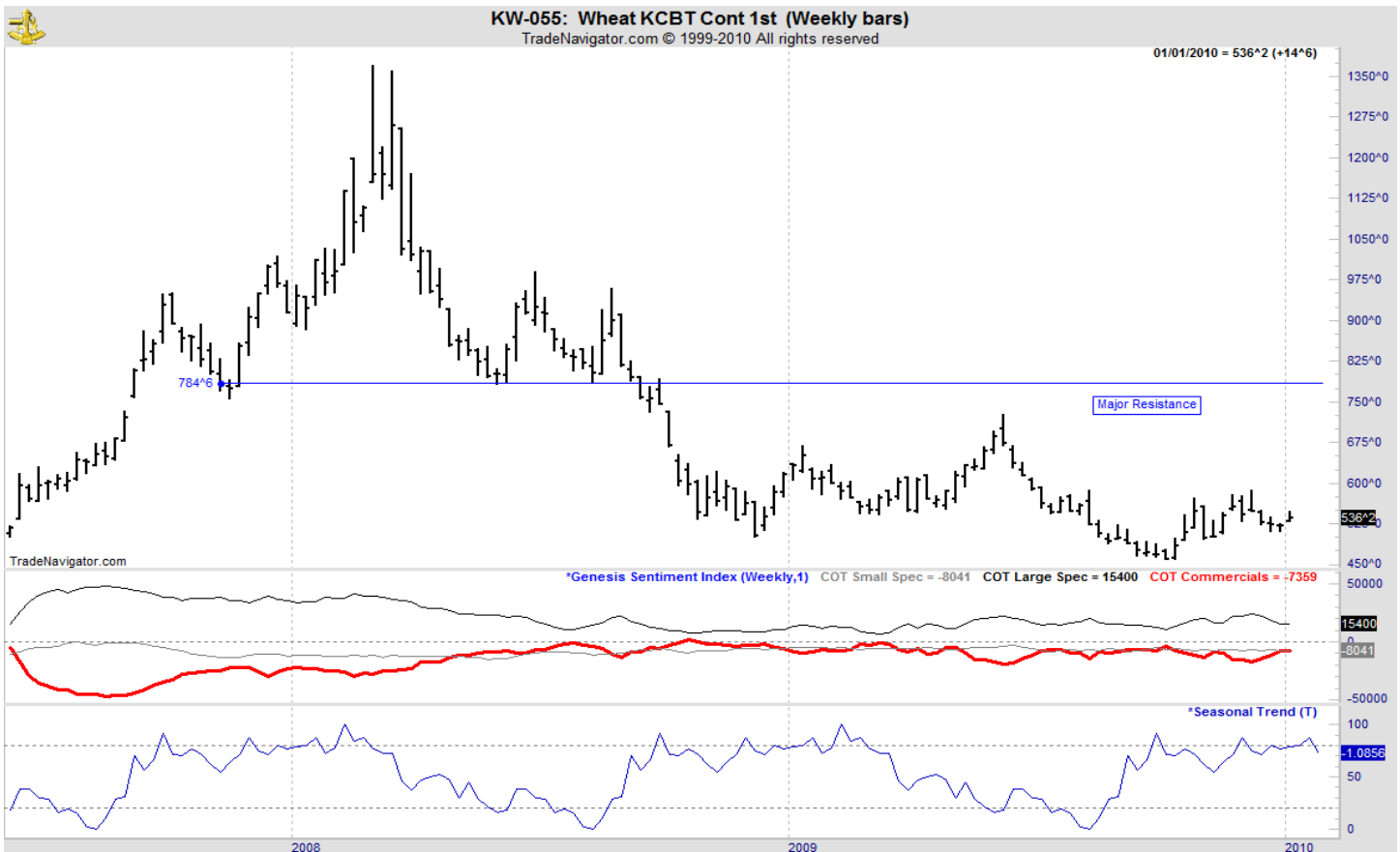
OATS



KANSAS CITY WHEAT



WEEKLY KANSAS CITY



MINNEAPOLIS WHEAT



WEEKLY MINNEAPOLIS

