



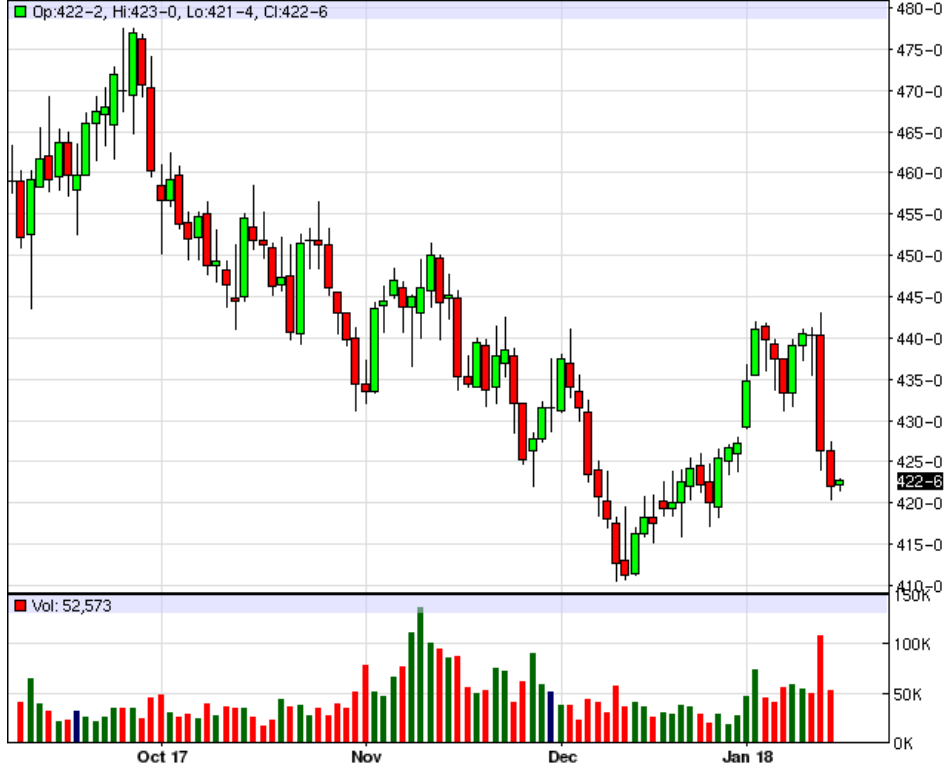
RICK ALEXANDER, MARKET STRATEGIST
ZANER GROUP

1/17/2018

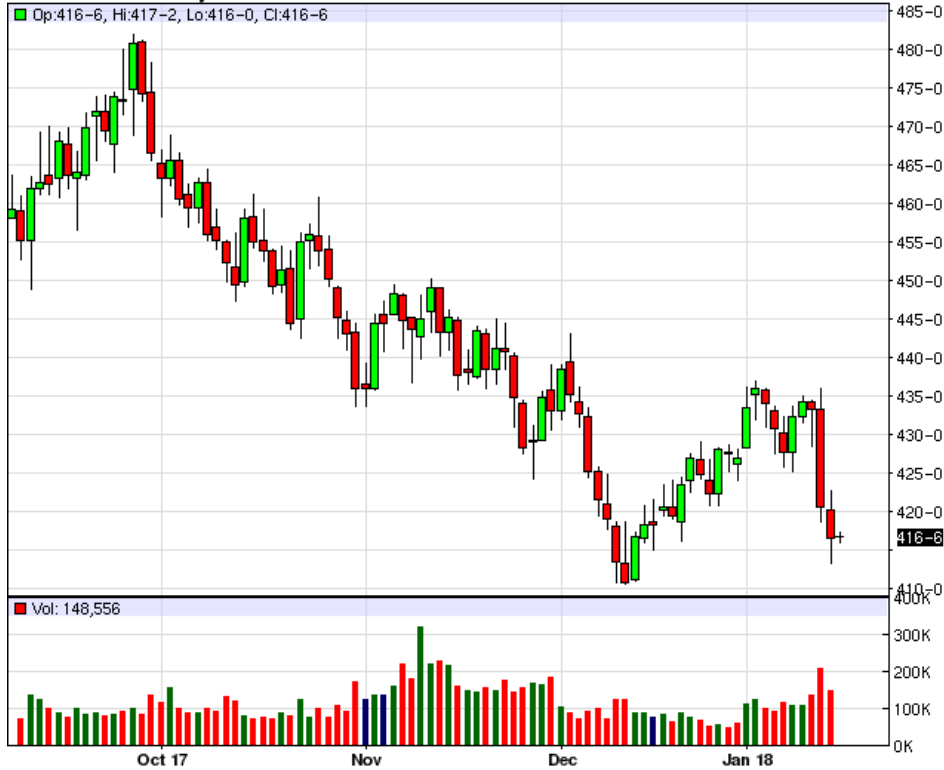
WASDE REPORT RESULTS AND NOTHING ELSE SINCE LAST WEDNESDAY'S REPORT

Higher closes for oats, rough rice, soybeans and soybean meal while lower for soybean oil, Minneapolis, Kansas City and Chicago wheat. Basically, as you all probably know by now, the WASDE REPORT said higher than estimated winter wheat acreage, record corn yield, lower acreage and neutral exports while the beans had lower yields, higher acreage and lower exports. Friday's sharply lower wheat closes, lower corn and higher beans and meal reflected the reports pretty accurately. In other words the wheat complex and corn continue overall to be in a downtrend with the latter making a new CONTRACT LOW AND CLOSE last Friday while beans and meal had a reprieve retracing higher since then. Oil got slammed against the meal though. Oats have been consolidating since my last report kind of messing up a possible bottoming formation while still in a large topping one so far. Meanwhile, rough rice has had a nice 50 cent pop from low to high this week so far but best to stay out of for now. Corn continues to look bearish as mentioned above still needing a close over 375. while reaching four dollars seems to be more of a dream at this time with the 360 - 400 range remaining a formidable looking resistance area that I don't expect to be penetrated any time soon. Finally, there's really nothing new to report that would make the bean complex enticing in my opinion. There are just hard areas to sell and buying is just an uneducated guess to me. SELL SIGNALS FOR MINNEAPOLIS, KANSAS CITY AND CHICAGO WHEAT ALONG WITH CORN, SOYBEANS, SOYBEAN OIL AND OATS. For additional charts, quotes, news, commentary & more, sign up for a FREE 30 -day trial to markethead.com.

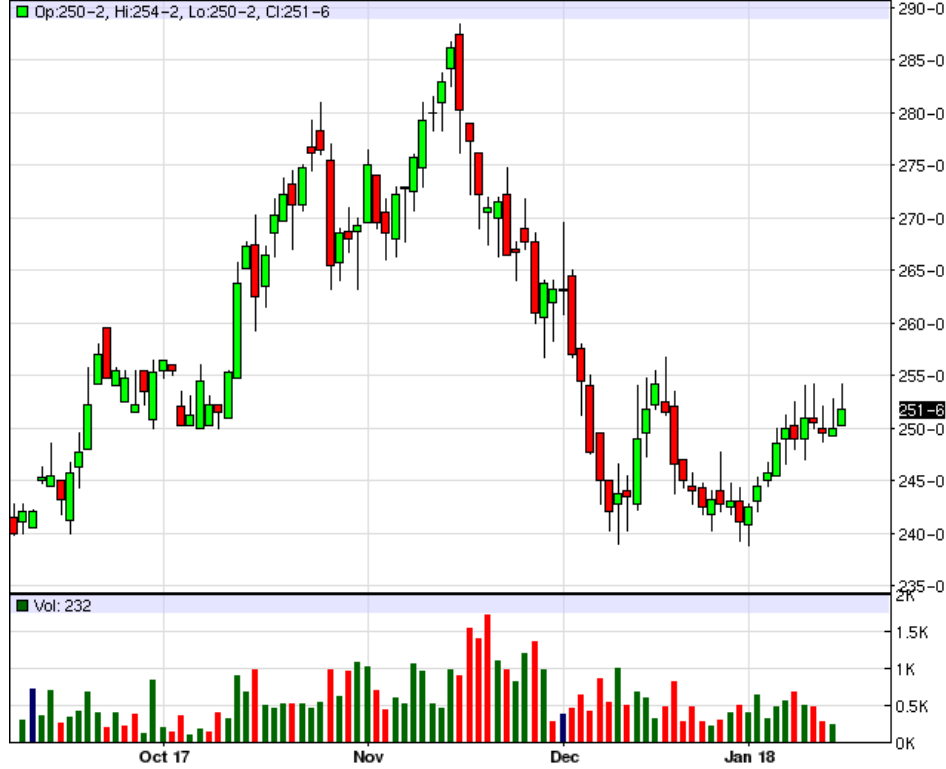
KEH18 - Hard Red Wheat - Daily Candlestick Chart



ZWH18 - Wheat - Daily Candlestick Chart



ZOH18 - Oats - Daily Candlestick Chart



ZRH18 - Rough Rice - Daily Candlestick Chart



ZCH18 - Corn - Daily Candlestick Chart



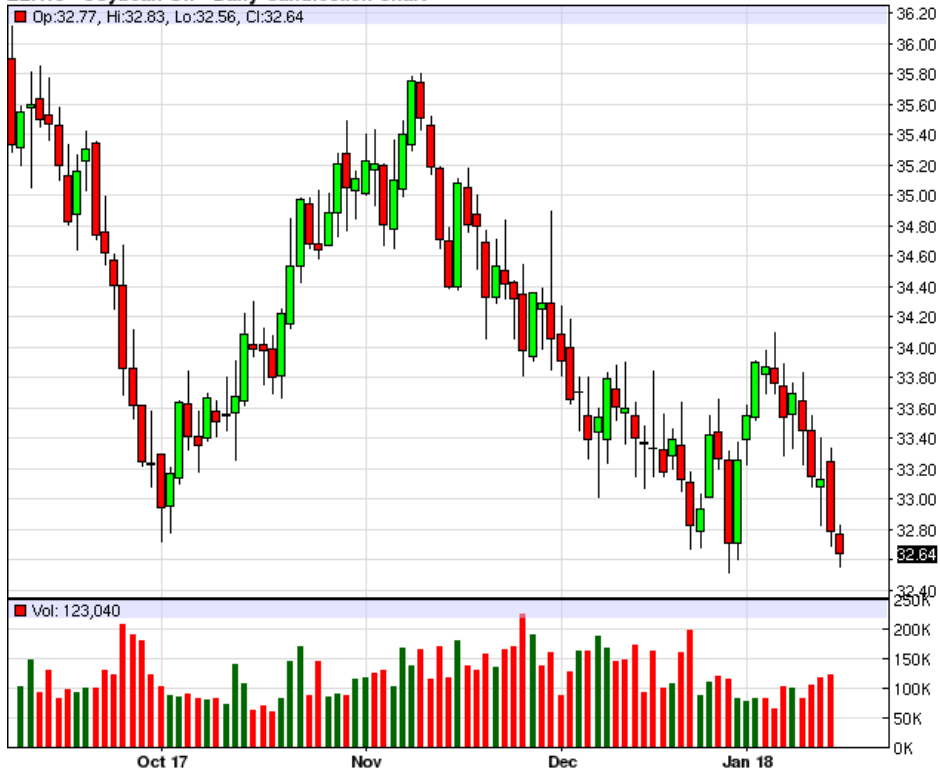
ZSH18 - Soybeans - Daily Candlestick Chart



ZMH18 - Soybean Meal - Daily Candlestick Chart



ZLH18 - Soybean Oil - Daily Candlestick Chart



To read more economic research reports like this one or subscribe to the mailing list, visit www.zaner.com.

THIS MATERIAL IS CONVEYED AS A SOLICITATION FOR ENTERING INTO A DERIVATIVES TRANSACTION.

THIS MATERIAL HAS BEEN PREPARED BY A ZANER BROKER WHO PROVIDES RESEARCH MARKET COMMENTARY AND TRADE RECOMMENDATIONS AS PART OF HIS OR HER SOLICITATION FOR ACCOUNTS AND SOLICITATION FOR TRADES; HOWEVER, ZANER DOES NOT MAINTAIN A RESEARCH DEPARTMENT AS DEFINED IN CFTC RULE 1.71. ZANER, ITS PRINCIPALS, BROKERS AND EMPLOYEES MAY TRADE IN DERIVATIVES FOR THEIR OWN ACCOUNTS OR FOR THE ACCOUNTS OF OTHERS. DUE TO VARIOUS FACTORS (SUCH AS RISK TOLERANCE, MARGIN REQUIREMENTS, TRADING OBJECTIVES, SHORT TERM VS. LONG TERM STRATEGIES, TECHNICAL VS. FUNDAMENTAL MARKET ANALYSIS, AND OTHER FACTORS) SUCH TRADING MAY RESULT IN THE INITIATION OR LIQUIDATION OF POSITIONS THAT ARE DIFFERENT FROM OR CONTRARY TO THE OPINIONS AND RECOMMENDATIONS CONTAINED THEREIN.

THE RISK OF LOSS IN TRADING FUTURES CONTRACTS OR COMMODITY OPTIONS CAN BE SUBSTANTIAL, AND THEREFORE INVESTORS SHOULD UNDERSTAND THE RISKS INVOLVED IN TAKING LEVERAGED POSITIONS AND MUST ASSUME RESPONSIBILITY FOR THE RISKS ASSOCIATED WITH SUCH INVESTMENTS AND FOR THEIR RESULTS. PAST PERFORMANCE IS NOT NECESSARILY INDICATIVE OF FUTURE PERFORMANCE.

150 S Wacker Dr, Suite 2350 · Chicago, IL 60606 · Direct: 312-277-0050 Fax: 312-277-0150 · info@zaner.com

Copyright © 2010 Zaner Group LLC. All Rights Reserved.