

MIDWEST MARKET SOLUTIONS, INC.

"THE LEADING EDGE IN COMMODITIES"

327 BROADWAY
YANKTON, SOUTH DAKOTA 57078
866-203-9655
605-260-3063 FAX
WWW.MIDWESTMARKETSOLUTIONS.COM



THE MARKET INSIDER NEWSLETTER

February 1, 2010

By: Brian Hoops, President
Midwest Market Solutions, Inc.

VISIT OUR WEBSITE AT www.midwestmarketsolutions.com FOR MORE INFORMATION.

Inside This Issue:

WHAT TO EXPECT IN FEBRUARY	2
CORN OUTLOOK	3,4
SOYBEAN OUTLOOK	5-7
WHEAT OUTLOOK	8-11
LIVE CATTLE OUTLOOK	12
FEEDER CATTLE OUTLOOK	13
LEAN HOG OUTLOOK	14
NEWS	15
NEWS	16
WEATHER	17
CALENDAR OF EVENTS	18
MARGIN REQUIREMENTS	19
COMPANY INFO	20
DISCLAIMER	20



WHEAT



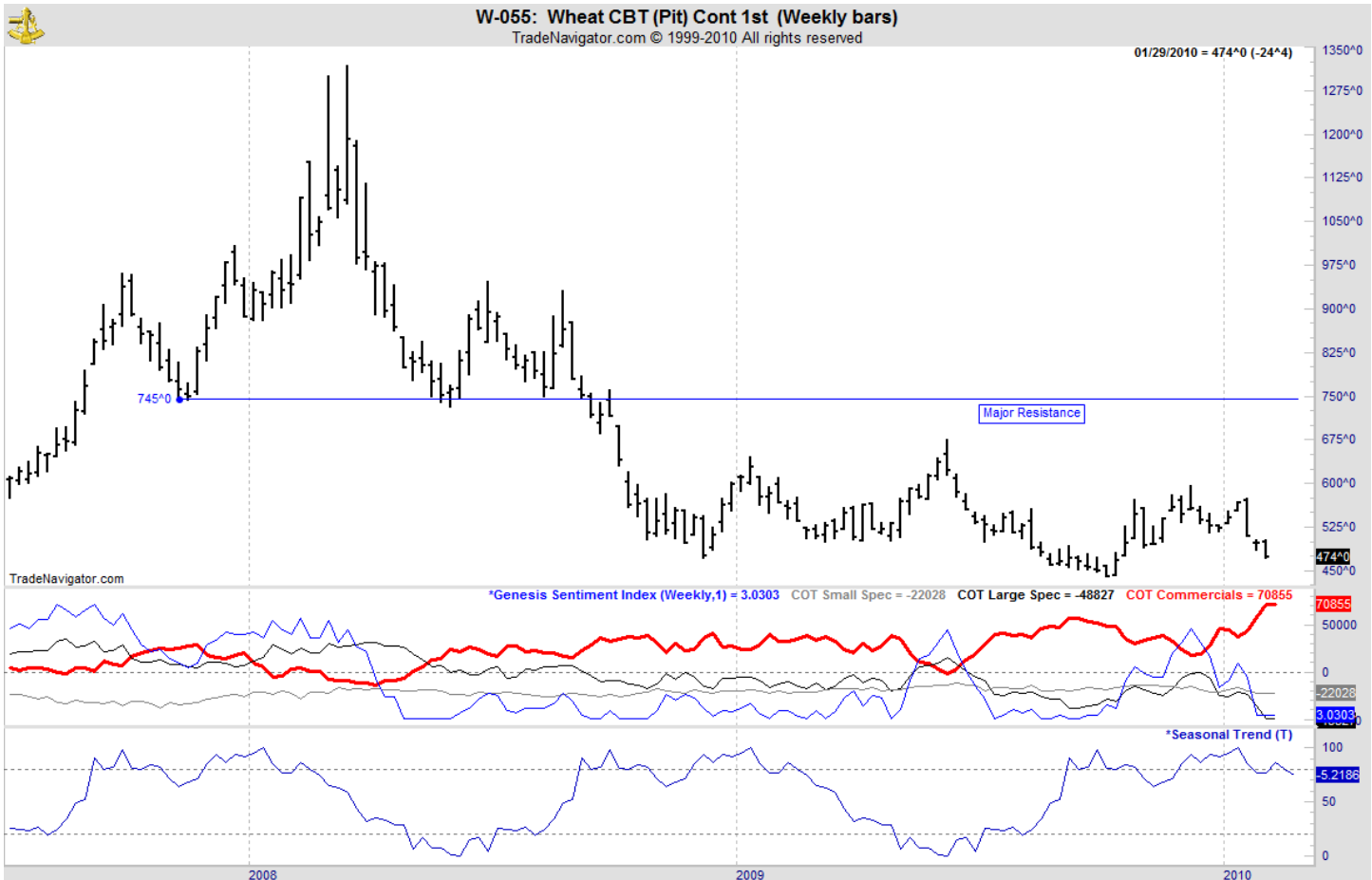
ANALYSIS

For the week, Chicago wheat closed \$.24 1/2 lower; Kansas City wheat \$.15 lower and Minneapolis wheat \$.08 lower. Wheat continues to fall to the lowest price levels since early October as there is very little fundamental news to support the market. Demand remains soft as again this week, Egypt snubbed the United States in favor of wheat from Russia. This is a clear message to traders that U.S. wheat is not competitively priced on the world market. Weekly export exports have improved slightly, but weekly sales remain well below a year ago. The weekly export sales report showed net sales of 660,700 metric tons for delivery in 2009/10 were down 20 percent from the previous week, but up 80 percent from the prior 4-week average. Increases were reported for Nigeria (113,000 MT), Japan (78,800 MT), Mexico (78,200 MT), South Korea (75,600 MT), Morocco (51,300 MT), China (50,000 MT), and Thailand (39,000 MT). Decreases were reported for Italy (20,000 MT). Net sales of 28,500 MT for delivery in 2010/11 were mainly for Italy (20,000 MT). The annual export pace remains well behind last year's pace. This year's exports stand at 651 mb vs. 821 mb a year ago. The U.S. need to export 9.15 mb each week to meet the USDA forecast of 825 mb. Seasonals remain lower for wheat until wheat breaks dormancy in late February.

STRATEGY & OUTLOOK

Producers should be 100% sold of their 2009 crop. Producers began to scale into 2010 crop sales at \$6.05 off the July Kansas City contract. Next sales objectives are \$6.40 and \$6.75.

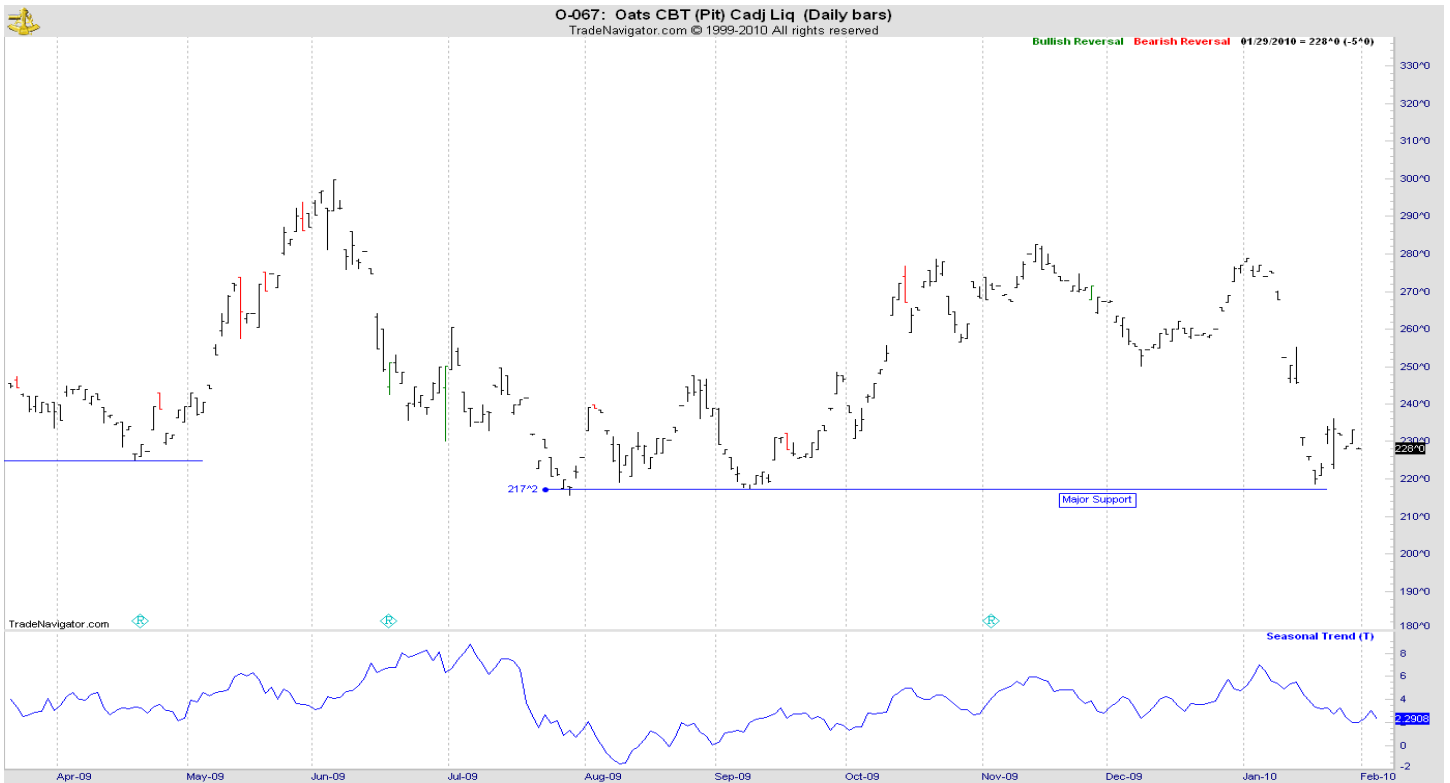
WEEKLY CHICAGO



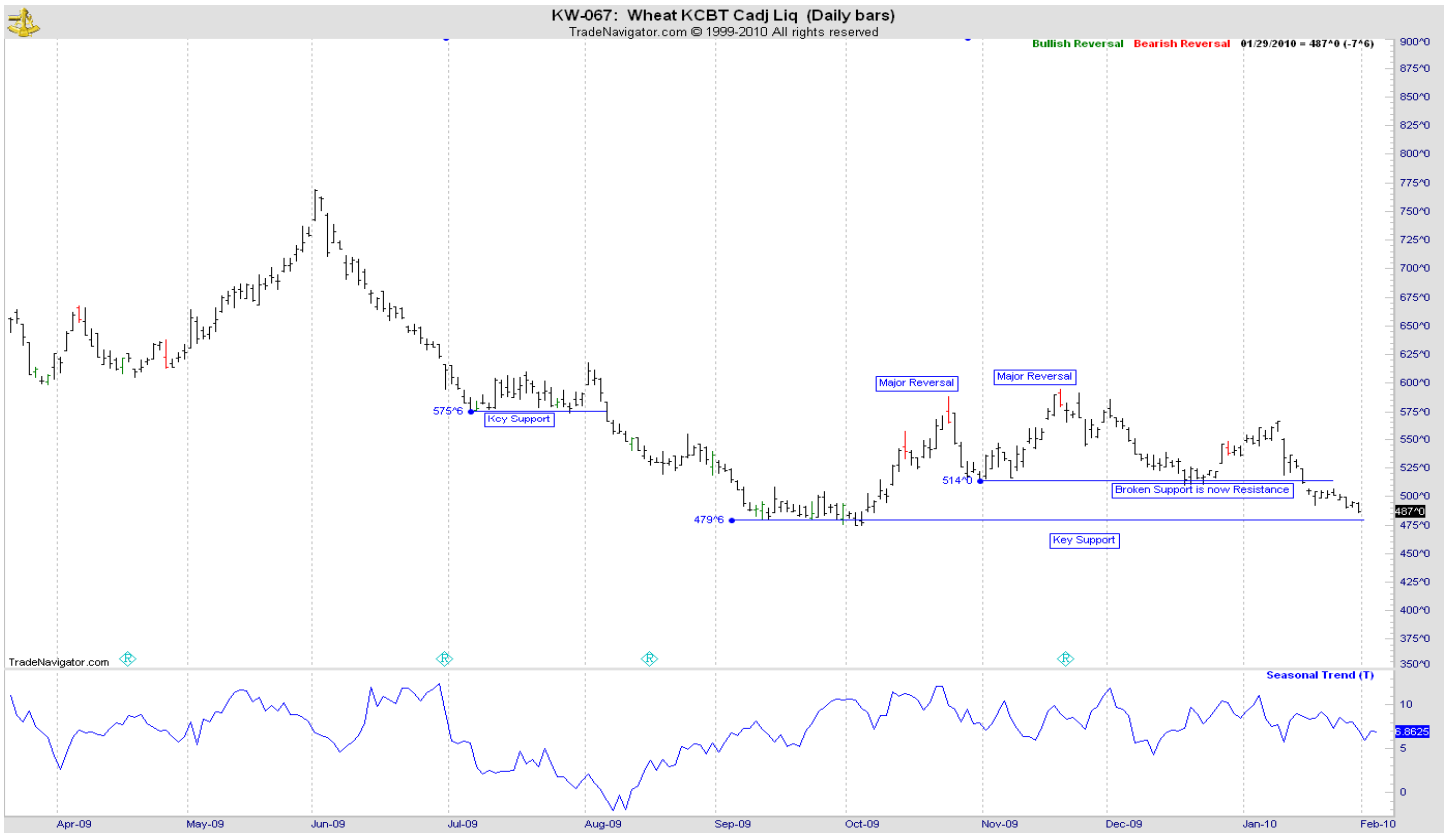
CHICAGO WHEAT



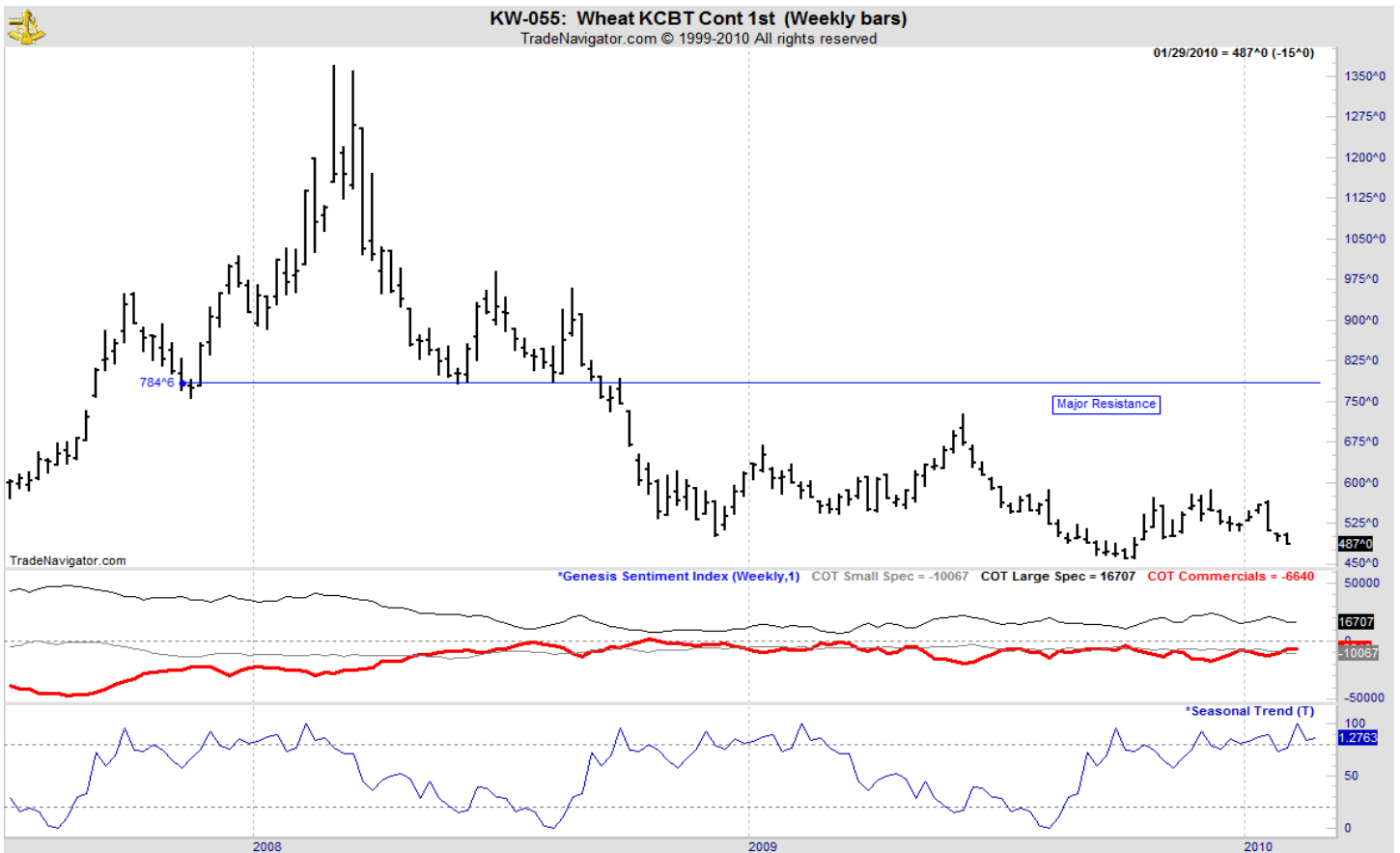
OATS



KANSAS CITY WHEAT



WEEKLY KANSAS CITY



MINNEAPOLIS WHEAT



WEEKLY MINNEAPOLIS

