



RICK ALEXANDER, MARKET STRATEGIST  
ZANER GROUP

2/13/2019

## US - CHINA TRADE DEAL LINGERS. BRAZIL MODERATE RAIN FOR 6 - 10 DAY FORECAST. ARGENTINA LIGHT RAIN COMING

KEEP TRADING THE RANGES MENTIONED BELOW UNTIL YOU SEE BREAKOUTS IN EITHER DIRECTION.

Higher closes for Minneapolis, Kansas City and Chicago wheat along with corn, oats, soybeans, soybean meal and soybean oil while lower for rough rice. Just a reminder about the charts below. They only show a small period of time which may make my comments look different from what you see below. US - China trade talks drag on, probably no shutdown this time, while Brazilian forecasts call for light rain along with Argentina but the latter is still dry overall at this time. For now, Minneapolis (needs a close above 600) has moved sideways to higher this year (565 - 585 trading range) but still bearish overall. KC's (needs close above 520 and then 550) but just had its worst low since 2016 and then settled higher in REVERSAL TYPE ACTION. Chicago (needs a close above 550) while also forming a possible large bottom and in a 510 - 550 trading range since late October. Oats continue to basically trade between 270 - 305 going back to last October. I see no trade to look for at this time. Rough rice continues to look weak on its way to possibly testing its December low at this time. Also stay out until further notice. Corn has been in 380 - 395 trading range since the beginning of December and 365 - 405 since last June. Just trade the range which has been shrinking lately. Of course, as we approach the planting season much can change as far as the scenario is concerned. Soybeans have been in an uptrend since September and in a trading range of 885 to 950 since the beginning of November. A potential decrease in bean acreage should help the bulls somewhat but there are still so many other worldwide factors added to the equation making it difficult to change the bearish feeling about the bean complex. Then again the beans continue to look higher while consolidating over the last couple of weeks. BUY SIGNALS FOR SOYBEANS AND SOYBEAN OIL. SELL SIGNALS FOR MINNEAPOLIS, KANSAS CITY AND CHICAGO WHEAT. For additional charts, quotes, news, commentary & more, sign up for a FREE 30 day trial to markethead.com.

MWK19 - Spring Wheat - Daily Candlestick Chart



KEK19 - Hard Red Wheat - Daily Candlestick Chart



ZWK19 - Wheat - Daily Candlestick Chart



ZOK19 - Oats - Daily Candlestick Chart



ZRK19 - Rough Rice - Daily Candlestick Chart

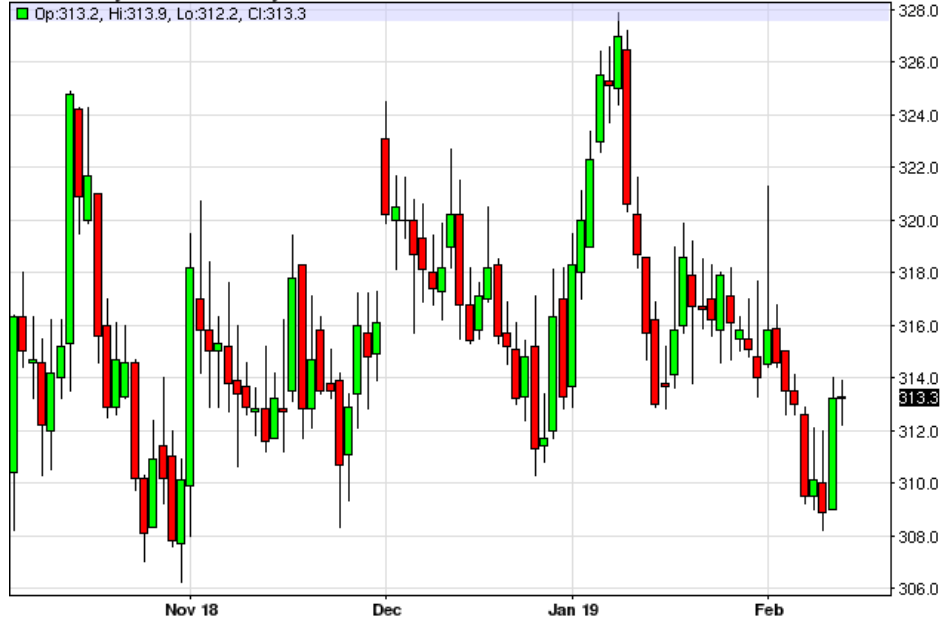


ZCK19 - Corn - Daily Candlestick Chart



ZSK19 - Soybean - Daily Candlestick Chart



**ZMK19 - Soybean Meal - Daily Candlestick Chart****ZLK19 - Soybean Oil - Daily Candlestick Chart**

To read more economic research reports like this one or subscribe to the mailing list, visit [www.zaner.com](http://www.zaner.com).

THIS MATERIAL IS CONVEYED AS A SOLICITATION FOR ENTERING INTO A DERIVATIVES TRANSACTION.

THIS MATERIAL HAS BEEN PREPARED BY A ZANER BROKER WHO PROVIDES RESEARCH MARKET COMMENTARY AND TRADE RECOMMENDATIONS AS PART OF HIS OR HER SOLICITATION FOR ACCOUNTS AND SOLICITATION FOR TRADES; HOWEVER, ZANER DOES NOT MAINTAIN A RESEARCH DEPARTMENT AS DEFINED IN CFTC RULE 1.71. ZANER, ITS PRINCIPALS, BROKERS AND EMPLOYEES MAY TRADE IN DERIVATIVES FOR THEIR OWN ACCOUNTS OR FOR THE ACCOUNTS OF OTHERS. DUE TO VARIOUS FACTORS (SUCH AS RISK TOLERANCE, MARGIN REQUIREMENTS, TRADING OBJECTIVES, SHORT TERM VS. LONG TERM STRATEGIES, TECHNICAL VS. FUNDAMENTAL MARKET ANALYSIS, AND OTHER FACTORS) SUCH TRADING MAY RESULT IN THE INITIATION OR LIQUIDATION OF POSITIONS THAT ARE DIFFERENT FROM OR CONTRARY TO THE OPINIONS AND

RECOMMENDATIONS CONTAINED THEREIN.

THE RISK OF LOSS IN TRADING FUTURES CONTRACTS OR COMMODITY OPTIONS CAN BE SUBSTANTIAL, AND THEREFORE INVESTORS SHOULD UNDERSTAND THE RISKS INVOLVED IN TAKING LEVERAGED POSITIONS AND MUST ASSUME RESPONSIBILITY FOR THE RISKS ASSOCIATED WITH SUCH INVESTMENTS AND FOR THEIR RESULTS. PAST PERFORMANCE IS NOT NECESSARILY INDICATIVE OF FUTURE PERFORMANCE.

150 S Wacker Dr, Suite 2350 · Chicago, IL 60606 · Direct: 312-277-0050 Fax: 312-277-0150 · [info@zaner.com](mailto:info@zaner.com)

Copyright © 2010 Zaner Group LLC. All Rights Reserved.