

MIDWEST MARKET SOLUTIONS, INC.

"THE LEADING EDGE IN COMMODITIES"

327 BROADWAY
YANKTON, SOUTH DAKOTA 57078
866-203-9655
605-260-3063 FAX
WWW.MIDWESTMARKETSOLUTIONS.COM



THE MARKET INSIDER NEWSLETTER

March 16, 2009

By: Brian Hoops, President
Midwest Market Solutions, Inc.

VISIT OUR WEBSITE AT www.midwestmarketsolutions.com FOR MORE INFORMATION.

Inside This Issue:

THE MARCH SUPPLY/DEMAND REPORT	2
CORN OUTLOOK	3,4
SOYBEAN OUTLOOK	5-7
WHEAT OUTLOOK	8-11
LIVE CATTLE OUTLOOK	12
FEEDER CATTLE OUTLOOK	13
LEAN HOG OUTLOOK	14
NEWS	15
NEWS	16
WEATHER	17
CALENDAR OF EVENTS	18
MARGIN REQUIREMENTS	19
COMPANY INFO	20
DISCLAIMER	20



WHEAT



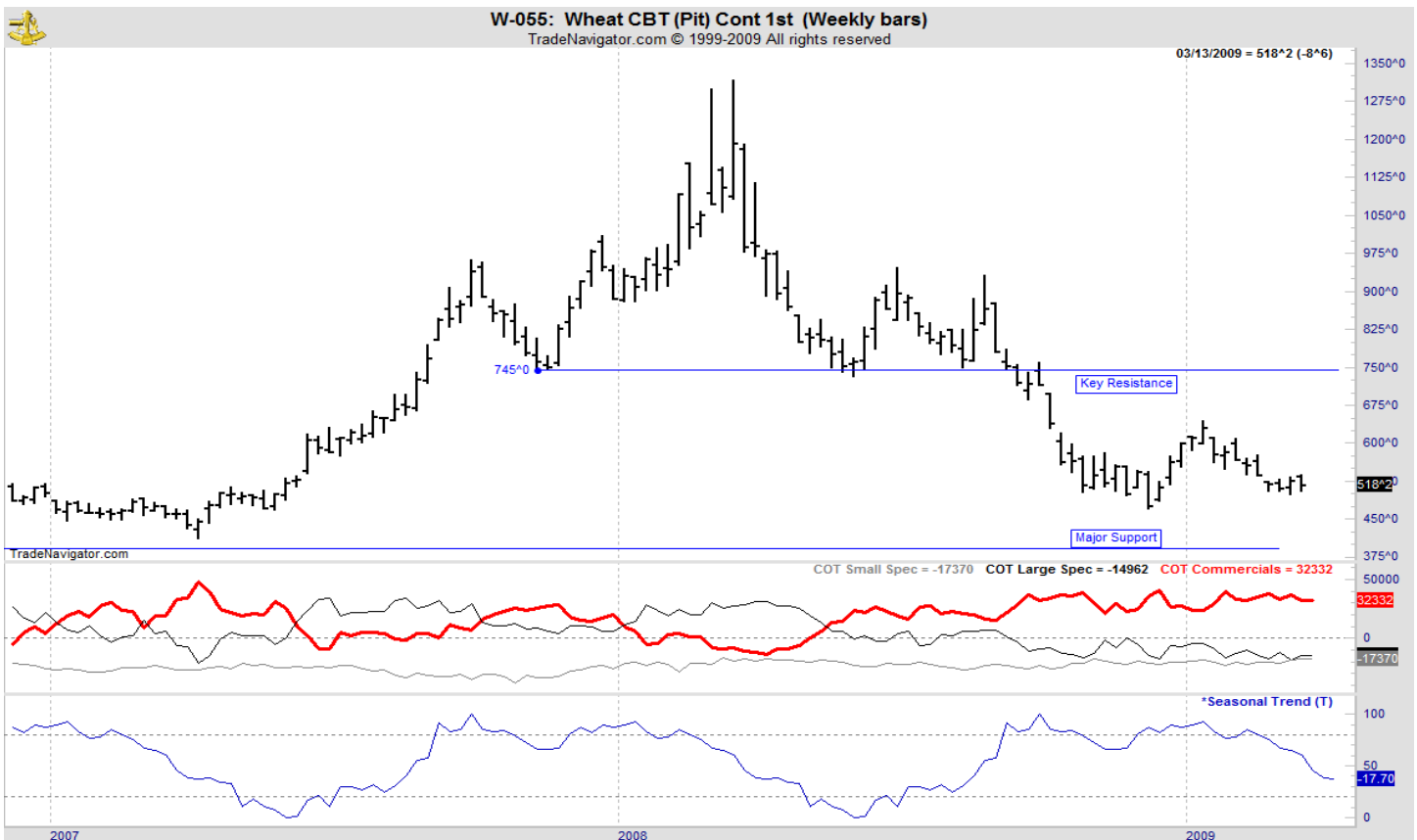
ANALYSIS

For the week, Chicago wheat closed \$.08 3/4 lower; Kansas City wheat \$.04 lower and Minneapolis wheat \$.21 3/4 lower. The weekly export sales report showed net sales of 362,900 metric tons were up 27 percent from the previous week, but down 9 percent from the prior 4-week average. Increases reported for Japan (135,900 MT), Nigeria (87,900 MT), Indonesia (58,000 MT, switched from unknown destinations), Algeria (25,000 MT), Honduras (21,200 MT), Jamaica (16,000 MT), Colombia (10,700 MT), and the Dominican Republic (10,600 MT), were partially offset by decreases for Mexico (16,800 MT), Brazil (4,000 MT), Guatemala (3,500 MT), Venezuela (3,000 MT), and unknown destinations (3,000 MT). Net sales of 36,300 MT for delivery in 2009/10 were for Mexico (26,000 MT), Trinidad (10,000 MT), and Japan (300 MT). This year's U.S. wheat sales stand at 76% compared to last year's strong sale performance with commitments of 905 mb this year vs. 1,185 mb a year ago. The U.S. only needs to export 5.7 mb each week to reach the USDA forecast. Demand should begin to move to the backburner for price direction as traders will begin to shift their focus to the weather in the winter plains. After receiving some much needed rainfall a week ago, the forecast has returned to hot and dry. Some winter wheat is already beginning to break dormancy in Texas and will badly need some rainfall. Informa estimated 2009 U.S. other spring wheat seedings at 14.077 million, versus 14.135 million planted a year ago, and durum planted acreage at 2.670 million, compared to 2.731 million seeded in 2008.

STRATEGY & OUTLOOK

Producers should have over 50% of their 2008 crop sold and/or hedged. The other 50% should be sold in 10% increments on a spring rally if KC can rally to the \$6.50 to \$7.00 range. New crop hedges should be placed once July KC wheat can reaches the \$7.00 to \$7.50 range.

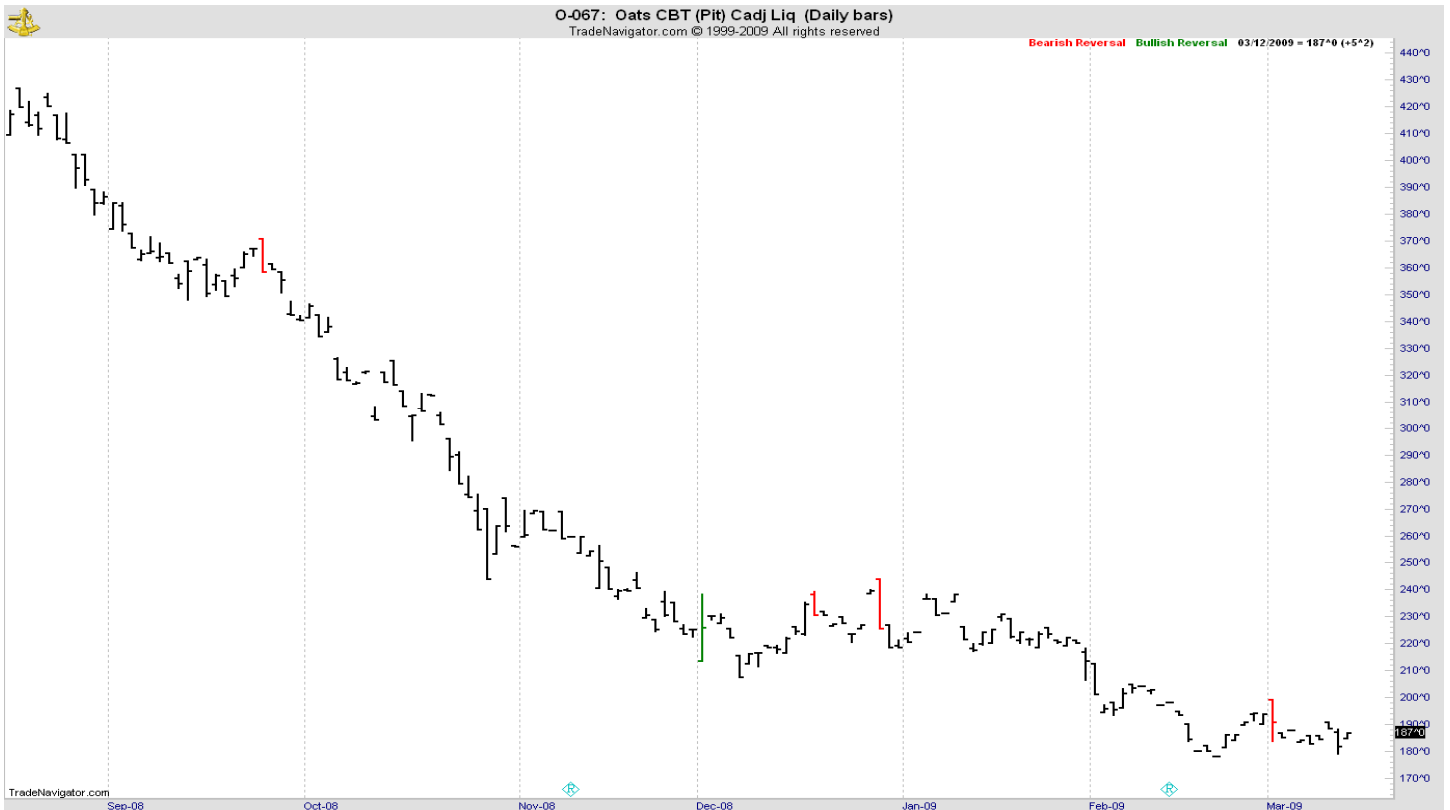
WEEKLY CHICAGO



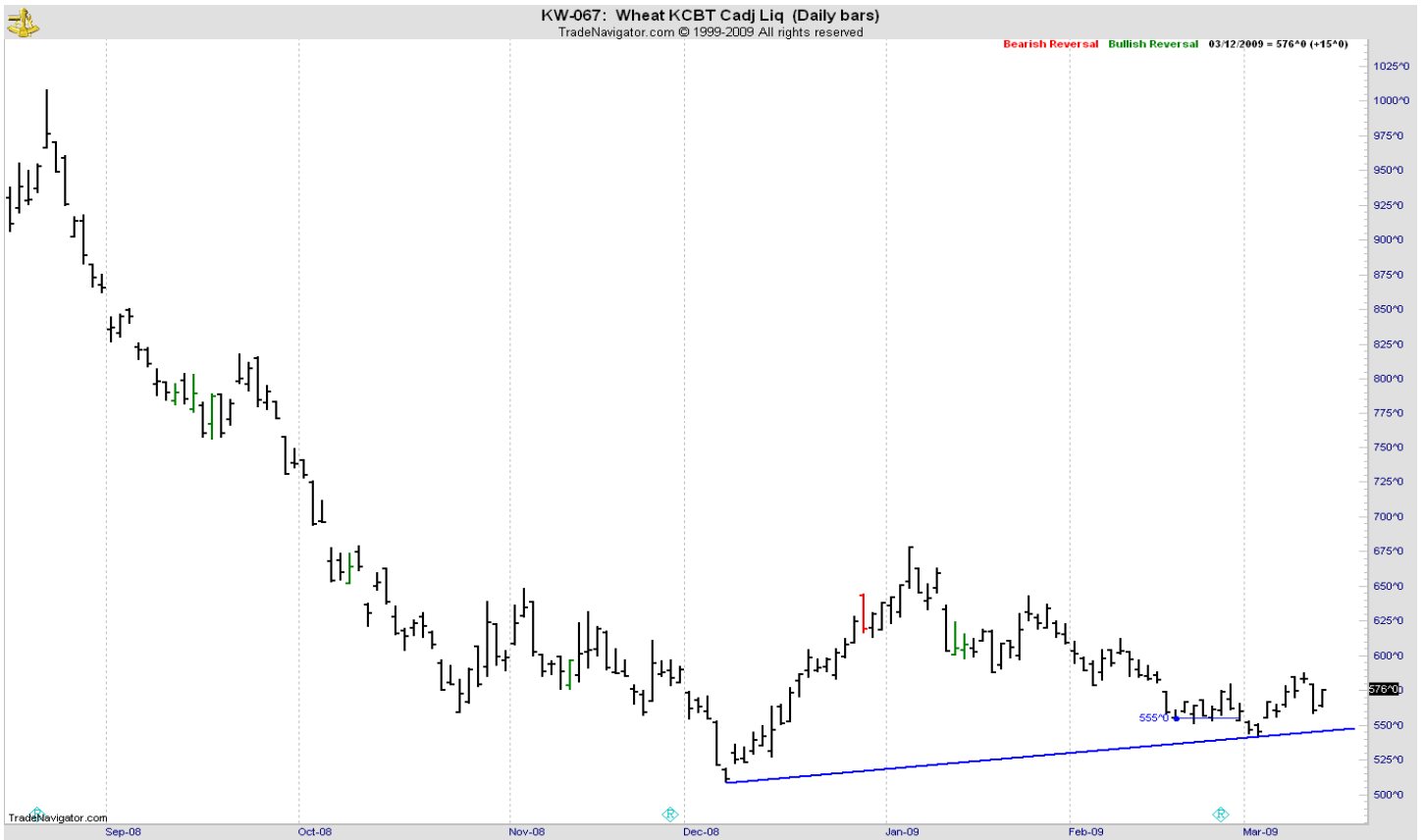
CHICAGO WHEAT



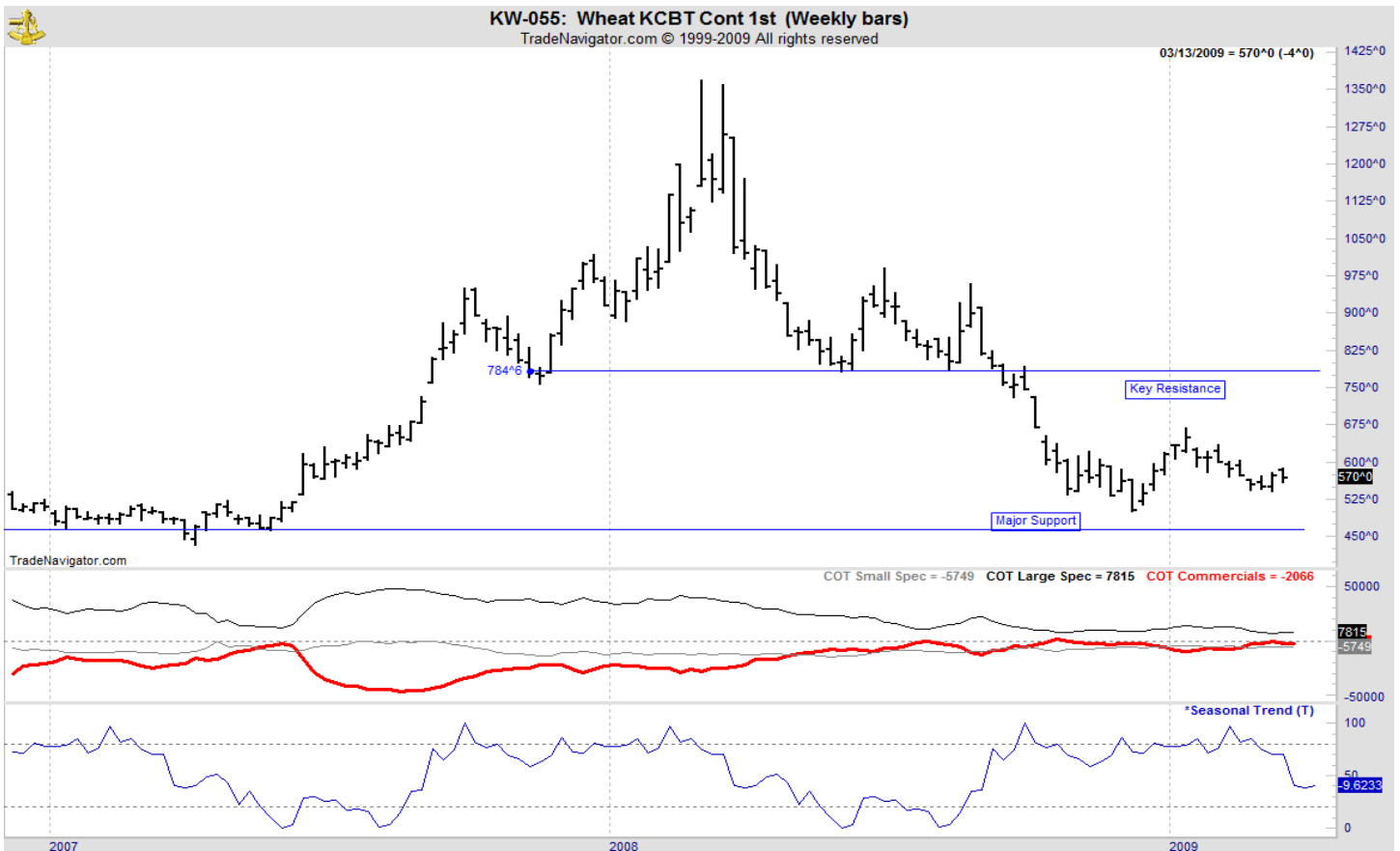
OATS



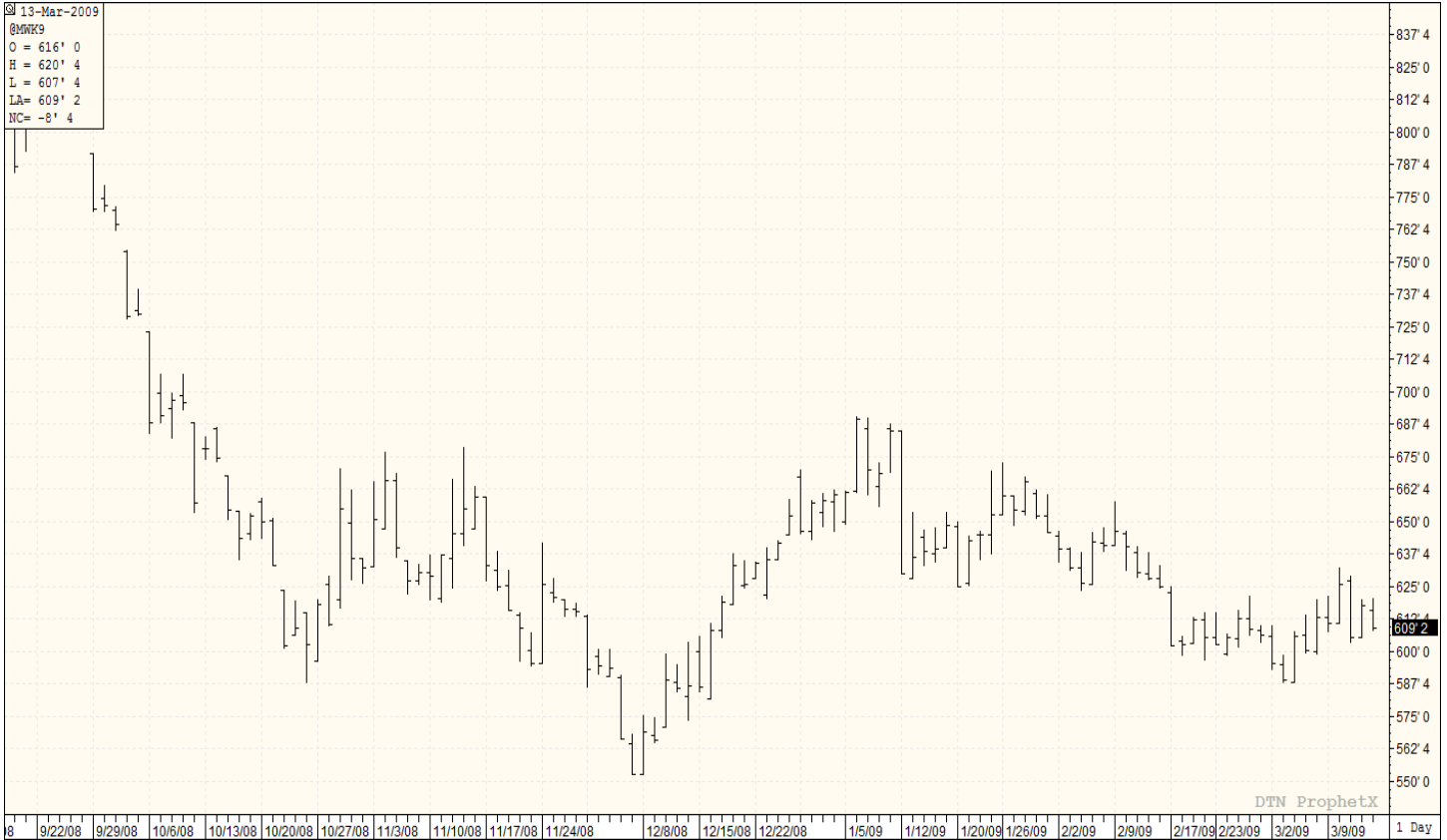
KANSAS CITY WHEAT



WEEKLY KANSAS CITY



MINNEAPOLIS WHEAT



WEEKLY MINNEAPOLIS

