



RICK ALEXANDER, MARKET STRATEGIST  
ZANER GROUP

3/29/2017

## PROSPECTIVE PLANTINGS AND STOCK REPORT ON FRIDAY

### PROSPECTIVE PLANTINGS AND STOCK REPORT ON FRIDAY

Posted on 3/29/2017 7:34:26 AM

Higher for corn, soybeans, soybean meal, soybean oil, Minneapolis, Kansas City and Chicago wheat while lower for rough rice. We still need to see if the United States loses much business to South America down the road due the dollar along with the threat of several interest rate hikes by the FED this year as forecasted. Chicago wheat has held this week while Minneapolis and KC fell led by the former. Still, the wheat complex as a whole is in a decent support area. The complex seems to be entering is already long term downtrend. We need to continue to hold 520 for Minneapolis, 410 for KC and Chicago or else the resumption of the wheat complex's long term downtrend should resume. It's tough to work up a bullish scenario for the wheat complex which, of course is no secret. Oats have tanked since my last report but now are in a formidable support area. Still, I now have a SELL SIGNAL. It's possible the rice is bottoming but I doubt it. Its long term trend though does remain down at this time. Corn is in a good support and continues to hold the 350 area in spite of the fundamentals. I still want to give corn a sell signal but just can't do it in this area. The bean complex continues to look very weak with the beans and oil making their worst lows since last year and meal since January with nothing but bearing looking fundamentals in the forecast. Beans have tumbled over ninety cents since the middle of January. Just look at the charts below and that pretty much says it all. Record or near record crops in United States. South America and high bean acreage forecasts have weighed down this complex. Still, trading around ten dollars under the circumstances is pretty good! SELL SIGNALS FOR MINNEAPOLIS, KANSAS CITY AND CHICAGO WHEAT, OATS, ROUGH RICE, SOYBEANS, SOYBEAN MEAL AND SOYBEAN OIL. For additional charts, quotes, news, commentary & more, sign up for a FREE 30 -day trial to markethead.com.

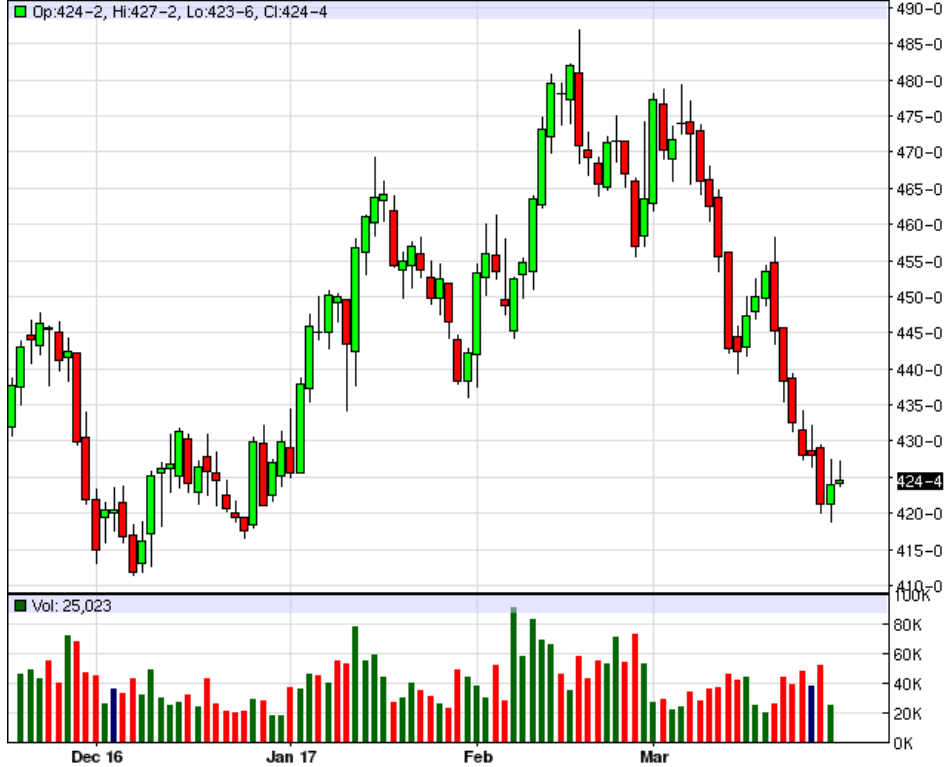
MWK17 - Spring Wheat - Daily Candlestick Chart



ZWK17 - Wheat - Daily Candlestick Chart



KEK17 - Hard Red Wheat - Daily Candlestick Chart



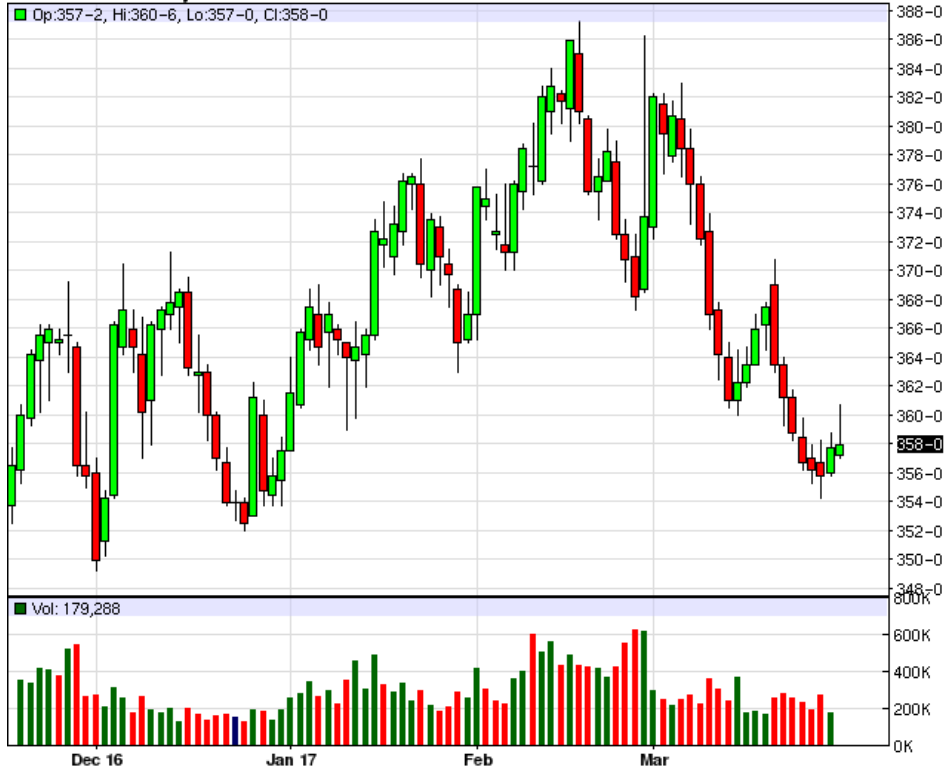
ZOK17 - Oats - Daily Candlestick Chart



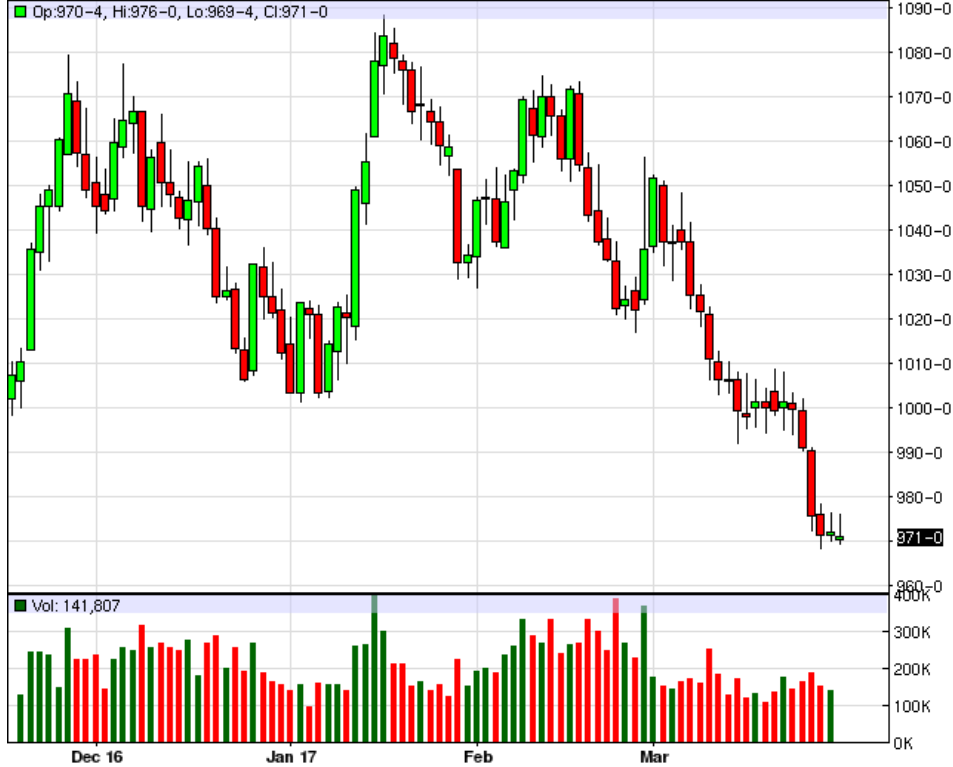
ZRK17 - Rough Rice - Daily Candlestick Chart



ZCK17 - Corn - Daily Candlestick Chart



ZSK17 - Soybeans - Daily Candlestick Chart



ZMK17 - Soybean Meal - Daily Candlestick Chart



ZLK17 - Soybean Oil - Daily Candlestick Chart



To read more economic research reports like this one or subscribe to the mailing list, visit [www.zaner.com](http://www.zaner.com).

THIS MATERIAL IS CONVEYED AS A SOLICITATION FOR ENTERING INTO A DERIVATIVES TRANSACTION.

THIS MATERIAL HAS BEEN PREPARED BY A ZANER BROKER WHO PROVIDES RESEARCH MARKET COMMENTARY AND TRADE RECOMMENDATIONS AS PART OF HIS OR HER SOLICITATION FOR ACCOUNTS AND SOLICITATION FOR TRADES; HOWEVER, ZANER DOES NOT MAINTAIN A RESEARCH DEPARTMENT AS DEFINED IN CFTC RULE 1.71. ZANER, ITS PRINCIPALS, BROKERS AND EMPLOYEES MAY TRADE IN DERIVATIVES FOR THEIR OWN ACCOUNTS OR FOR THE ACCOUNTS OF OTHERS. DUE TO VARIOUS FACTORS (SUCH AS RISK TOLERANCE, MARGIN REQUIREMENTS, TRADING OBJECTIVES, SHORT TERM VS. LONG TERM STRATEGIES, TECHNICAL VS. FUNDAMENTAL MARKET ANALYSIS, AND OTHER FACTORS) SUCH TRADING MAY RESULT IN THE INITIATION OR LIQUIDATION OF POSITIONS THAT ARE DIFFERENT FROM OR CONTRARY TO THE OPINIONS AND RECOMMENDATIONS CONTAINED THEREIN.

THE RISK OF LOSS IN TRADING FUTURES CONTRACTS OR COMMODITY OPTIONS CAN BE SUBSTANTIAL, AND THEREFORE INVESTORS SHOULD UNDERSTAND THE RISKS INVOLVED IN TAKING LEVERAGED POSITIONS AND MUST ASSUME RESPONSIBILITY FOR THE RISKS ASSOCIATED WITH SUCH INVESTMENTS AND FOR THEIR RESULTS. PAST PERFORMANCE IS NOT NECESSARILY INDICATIVE OF FUTURE PERFORMANCE.

150 S Wacker Dr, Suite 2350 · Chicago, IL 60606 · Direct: 312-277-0050 Fax: 312-277-0150 · [info@zaner.com](mailto:info@zaner.com)

Copyright © 2010 Zaner Group LLC. All Rights Reserved.