



RICK ALEXANDER, MARKET STRATEGIST
ZANER GROUP

6/6/2018

FASTEN YOUR SEAT BELTS. SHORT & LONG TERM FORECAST - HOT WEATHER. WHERE HAVE I HEARD THAT BEFORE?

Higher closes for Minneapolis, Kansas City and Chicago wheat along with oats and corn while lower for rough rice, soybeans, soybean meal and soybean oil. Right now the plantings are at least on schedule and most areas look okay. The short and long range forecast says hot but I still believe you should expect a normal crop year and go from there. We all know how accurate weather forecasts usually are. Minneapolis continues to hold April lows while KC and Chicago has made higher highs and lows since the end of March. However, I just can't get bullish mentally although the technicals for the latter two have a tendency to show them working higher overall. Minneapolis continues to lag behind. While oats have been consolidating since my last report, they have broken out as mentioned last week. However, good resistance above 260 should probably limit its move. Rough rice continues to fall again making a new CONTRACT LOW AND CLOSE. Enough said! Corn has fallen sharply since the latter part of May now giving me a SELL SIGNAL off of a possible M formation. Still, I would like it to take out March's low and don't forget the hot weather forecast which could support it. In my opinion it's probably best to stand aside for now. With that being said corn made its lowest low since March 26th before settling higher in REVERSAL TYPE ACTION. The soybean complex continues to look weak overall with meal (SELL SIGNAL) making its worst low since April 14th. Once again the weather forecast makes the grain complex potentially dangerous and scary. BUY SIGNALS FOR MINNEAPOLIS (WEAK), KANSAS CITY AND CHICAGO WHEAT ALONG WITH OATS WHILE SELL SIGNALS FOR CORN, SOYBEANS, SOYBEAN MEAL AND SOYBEAN OIL. For additional charts, quotes, news, commentary & more, sign up for a FREE 30 day trial to markethead.com.

MWN18 - Spring Wheat - Daily Candlestick Chart



KEN18 - Hard Red Wheat - Daily Candlestick Chart



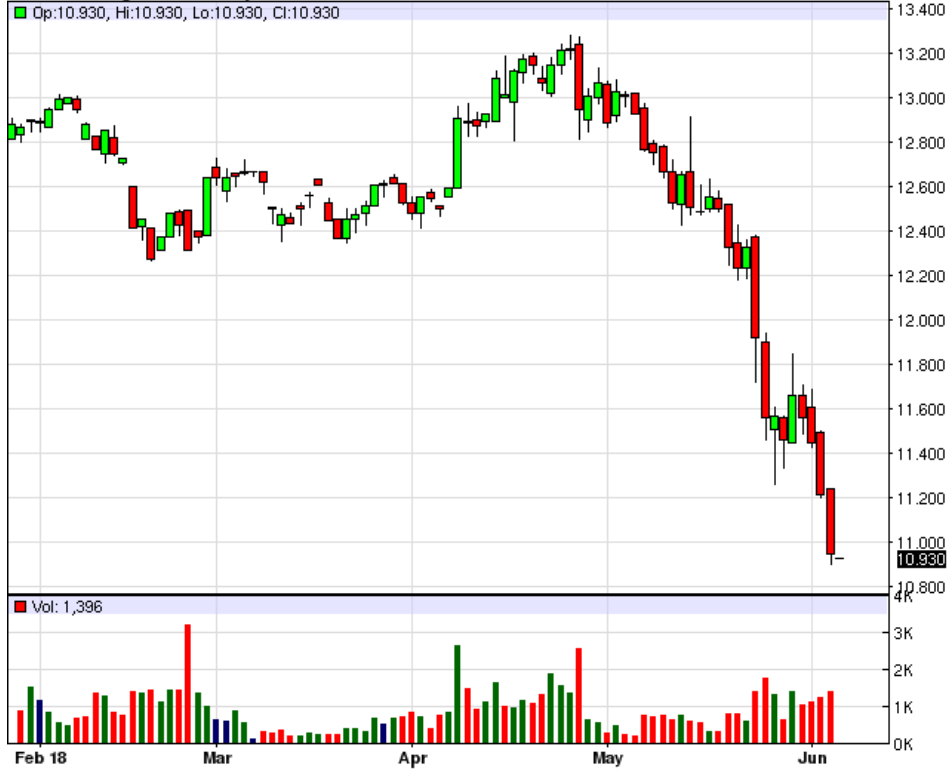
ZWN18 - Wheat - Daily Candlestick Chart



ZON18 - Oats - Daily Candlestick Chart



ZRN18 - Rough Rice - Daily Candlestick Chart



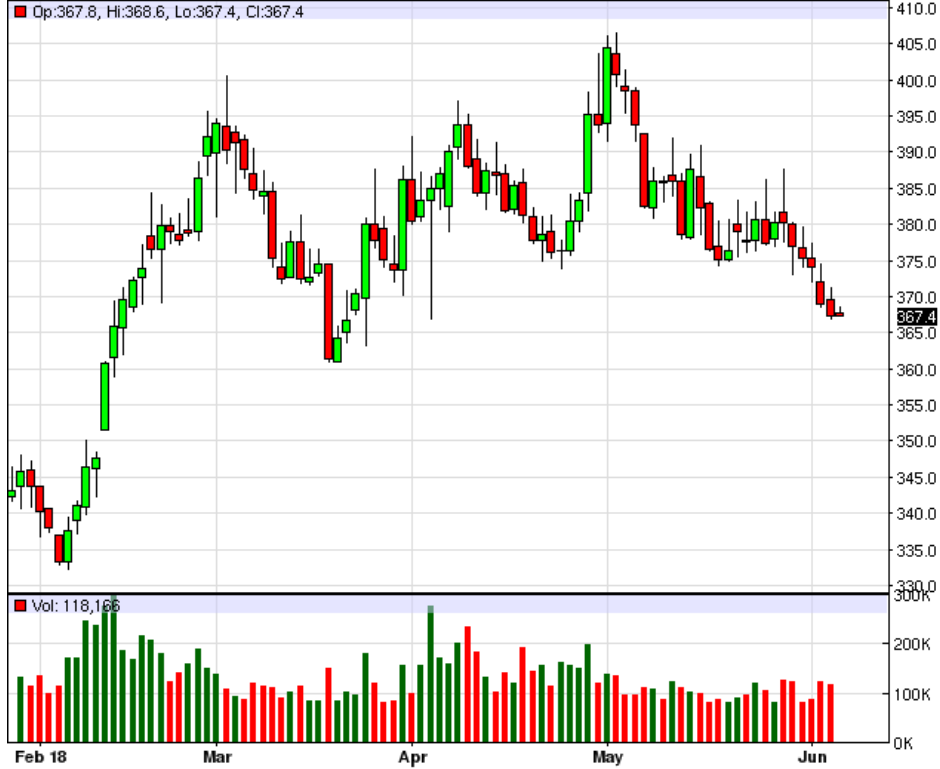
ZCN18 - Corn - Daily Candlestick Chart



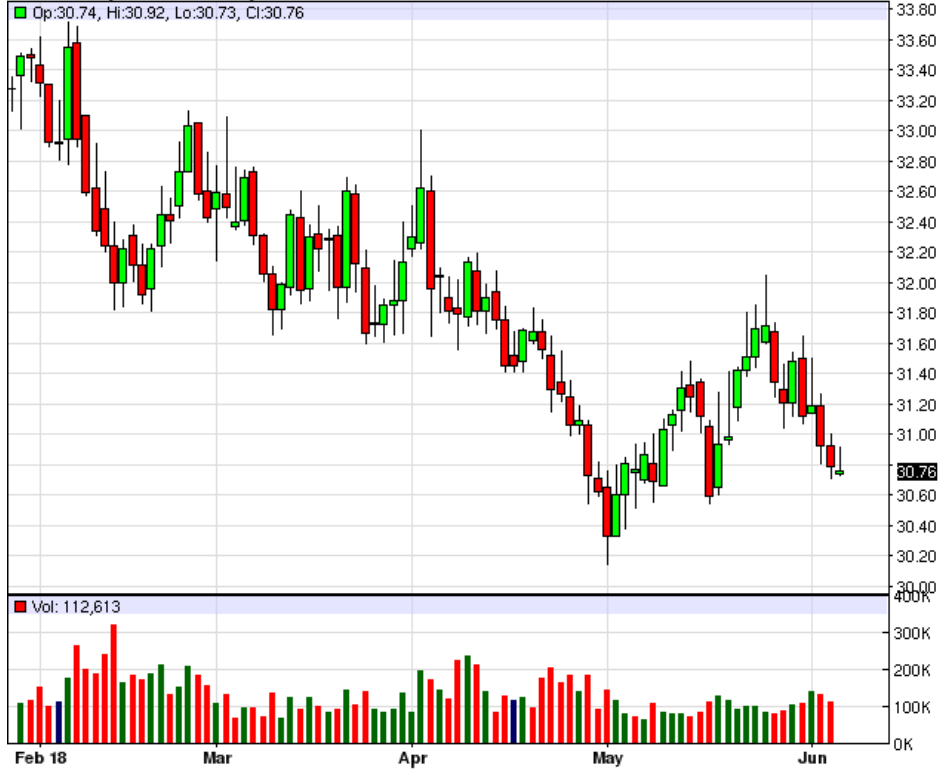
ZSN18 - Soybeans - Daily Candlestick Chart



ZMN18 - Soybean Meal - Daily Candlestick Chart



ZLN18 - Soybean Oil - Daily Candlestick Chart



To read more economic research reports like this one or subscribe to the mailing list, visit www.zaner.com.

THIS MATERIAL IS CONVEYED AS A SOLICITATION FOR ENTERING INTO A DERIVATIVES TRANSACTION.

THIS MATERIAL HAS BEEN PREPARED BY A ZANER BROKER WHO PROVIDES RESEARCH MARKET COMMENTARY AND TRADE RECOMMENDATIONS AS PART OF HIS OR HER SOLICITATION FOR ACCOUNTS AND SOLICITATION FOR TRADES; HOWEVER, ZANER DOES NOT MAINTAIN A RESEARCH DEPARTMENT AS DEFINED IN CFTC RULE 1.71. ZANER, ITS PRINCIPALS, BROKERS AND EMPLOYEES MAY TRADE IN DERIVATIVES FOR THEIR OWN ACCOUNTS OR FOR THE ACCOUNTS OF OTHERS. DUE TO VARIOUS FACTORS (SUCH AS RISK TOLERANCE, MARGIN REQUIREMENTS, TRADING OBJECTIVES, SHORT TERM VS. LONG TERM STRATEGIES, TECHNICAL VS. FUNDAMENTAL MARKET ANALYSIS, AND OTHER FACTORS) SUCH TRADING MAY RESULT IN THE INITIATION OR LIQUIDATION OF POSITIONS THAT ARE DIFFERENT FROM OR CONTRARY TO THE OPINIONS AND RECOMMENDATIONS CONTAINED THEREIN.

THE RISK OF LOSS IN TRADING FUTURES CONTRACTS OR COMMODITY OPTIONS CAN BE SUBSTANTIAL, AND THEREFORE INVESTORS SHOULD UNDERSTAND THE RISKS INVOLVED IN TAKING LEVERAGED POSITIONS AND MUST ASSUME RESPONSIBILITY FOR THE RISKS ASSOCIATED WITH SUCH INVESTMENTS AND FOR THEIR RESULTS. PAST PERFORMANCE IS NOT NECESSARILY INDICATIVE OF FUTURE PERFORMANCE.

150 S Wacker Dr, Suite 2350 · Chicago, IL 60606 · Direct: 312-277-0050 Fax: 312-277-0150 · info@zaner.com

Copyright © 2010 Zaner Group LLC. All Rights Reserved.