

MIDWEST MARKET SOLUTIONS, INC.

"THE LEADING EDGE IN COMMODITIES"

327 BROADWAY
YANKTON, SOUTH DAKOTA 57078
866-203-9655
605-260-3063 FAX
WWW.MIDWESTMARKETSOLUTIONS.COM



THE MARKET INSIDER NEWSLETTER

June 7, 2010

By: Brian Hoops, President
Midwest Market Solutions, Inc.

VISIT OUR WEBSITE AT www.midwestmarketsolutions.com FOR MORE INFORMATION.

Inside This Issue:

STICK WITH YOUR MARKETING PLAN	2
CORN OUTLOOK	3,4
SOYBEAN OUTLOOK	5-7
WHEAT OUTLOOK	8-11
LIVE CATTLE OUTLOOK	12
FEEDER CATTLE OUTLOOK	13
LEAN HOG OUTLOOK	14
SPECULATOR'S CORNER	15
NEWS	16
WEATHER	17
CALENDAR OF EVENTS	18
MARGIN REQUIREMENTS	19
COMPANY INFO	20
DISCLAIMER	20



WHEAT



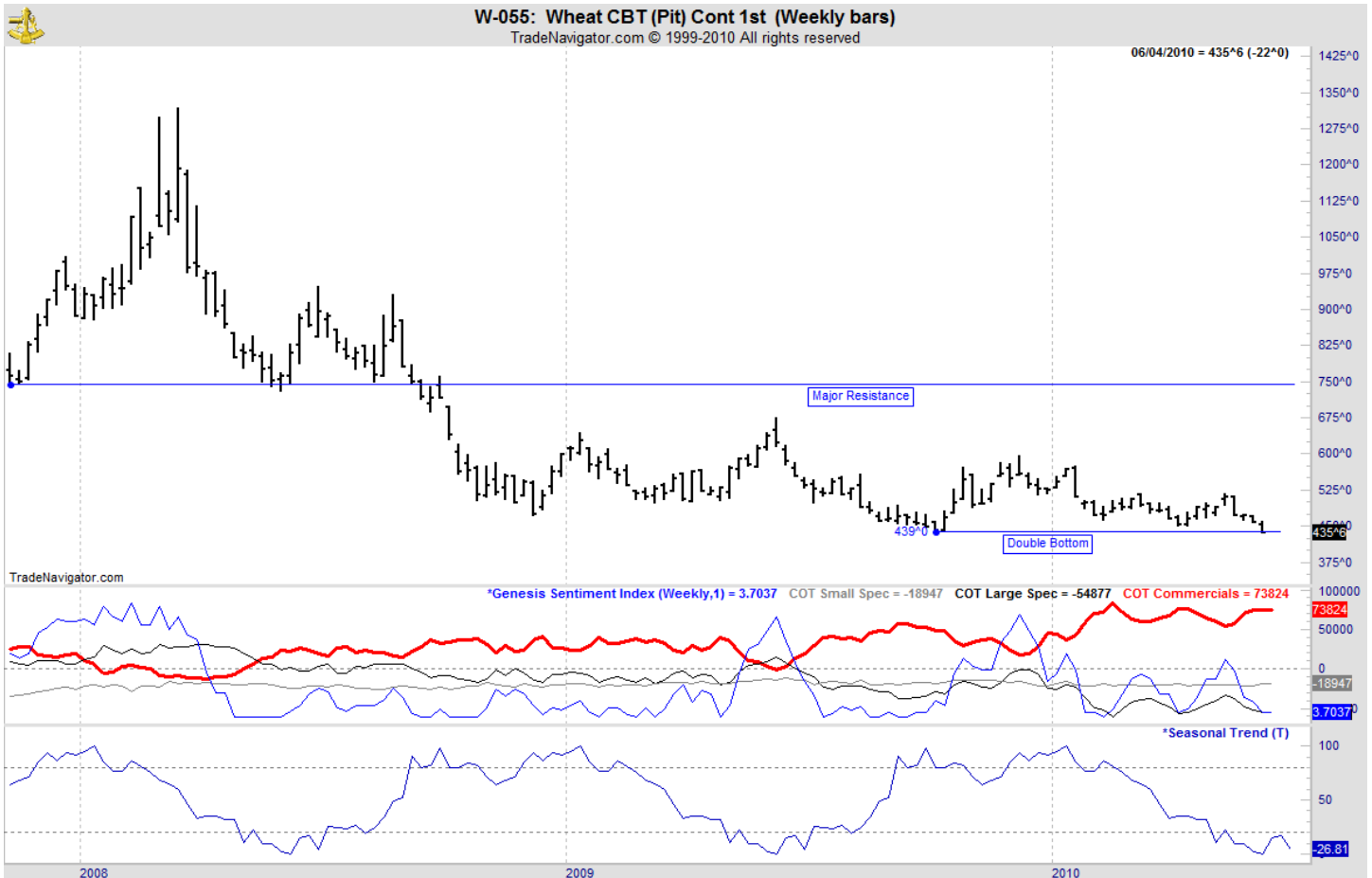
ANALYSIS

For the week, Chicago wheat closed \$.22 lower; Kansas City wheat \$.16 1/2 lower and Minneapolis wheat \$.13 1/4 lower. Last week, Egypt purchased 180,000 mts of Russian and French wheat, snubbing the U.S. once again. The weekly crop conditions report again showed winter wheat conditions at 65% good to excellent, 1% lower compared to the previous week. Last year's crop rating was 45% g/e. The USDA reported U.S. spring wheat planting at 95% complete as of May 30 favorably comparable to the 5-year average of 96%. 85% of the spring wheat crop is rated 85% g/e with 1% of the crop rate poor to very poor. A year ago, 73% of the crop is rated g/e with 4% rated p/vp. The weekly export sales report showed net sales of 53,200 metric tons resulted as increases for Mexico (32,800 MT), Brazil (28,300 MT, including 25,000 MT switched from unknown destinations), Algeria (21,700 MT, including 20,000 MT switched from unknown destinations), Japan (15,700 MT), Colombia (11,500 MT), and Canada (7,100 MT), were more than offset by decreases for unknown destinations (149,500 MT), Venezuela (20,800 MT), Nigeria (5,100 MT), and Trinidad (5,000 MT). Net sales of 294,300 MT for delivery in 2010/11 were mainly for Mexico (86,600 MT), unknown destinations (54,000 MT), Guatemala (26,200 MT), Israel (23,500 MT), and El Salvador (20,900 MT). This year's exports stand at 830 mb vs. the USDA forecast of 865 mb.

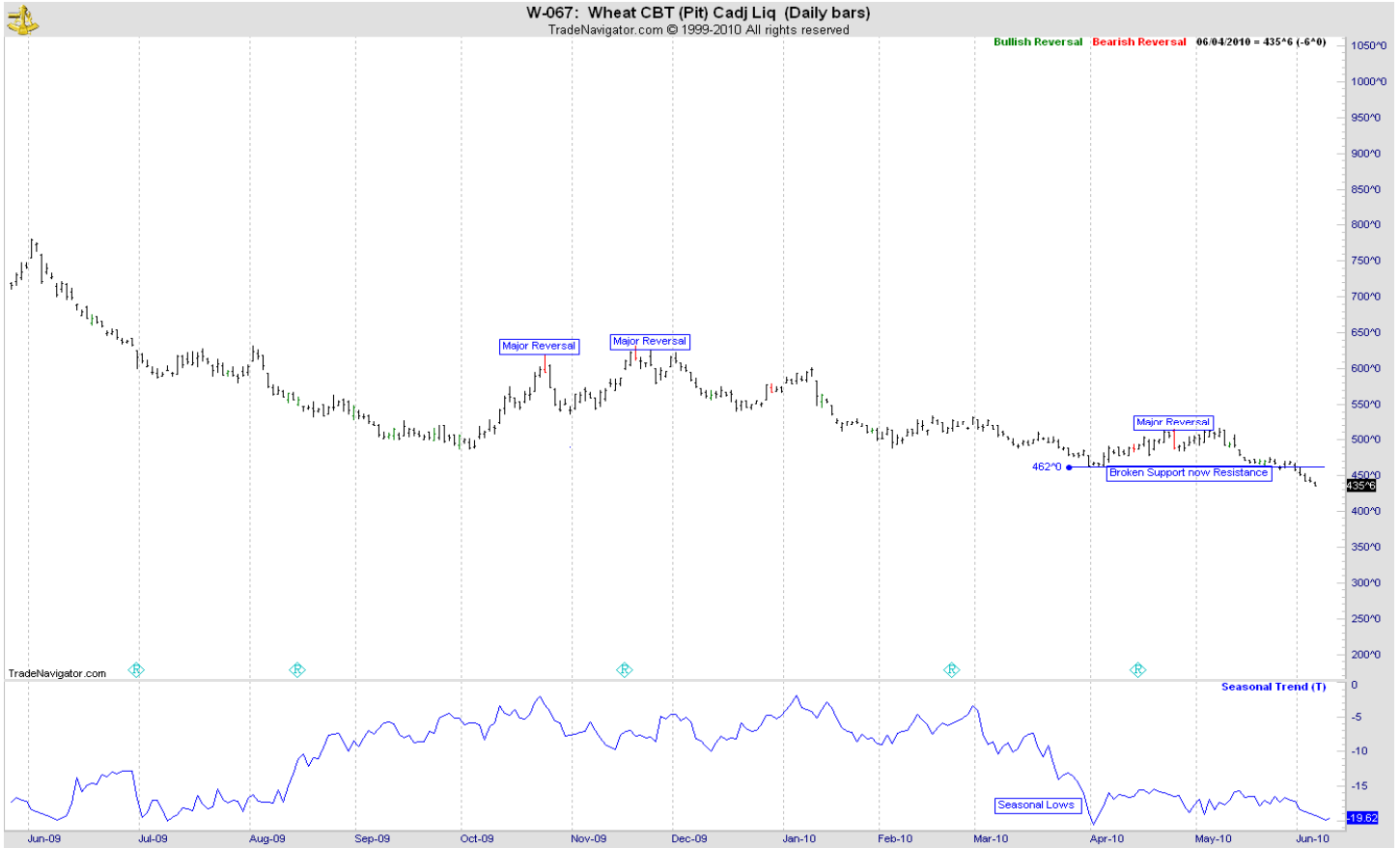
STRATEGY & OUTLOOK

Producers began to scale into 2010 crop sales at \$6.05 off the July Kansas City contract. Next sales objective is the 50% retracement level for the December contract. Producers can make cash sales and buy put options at this level.

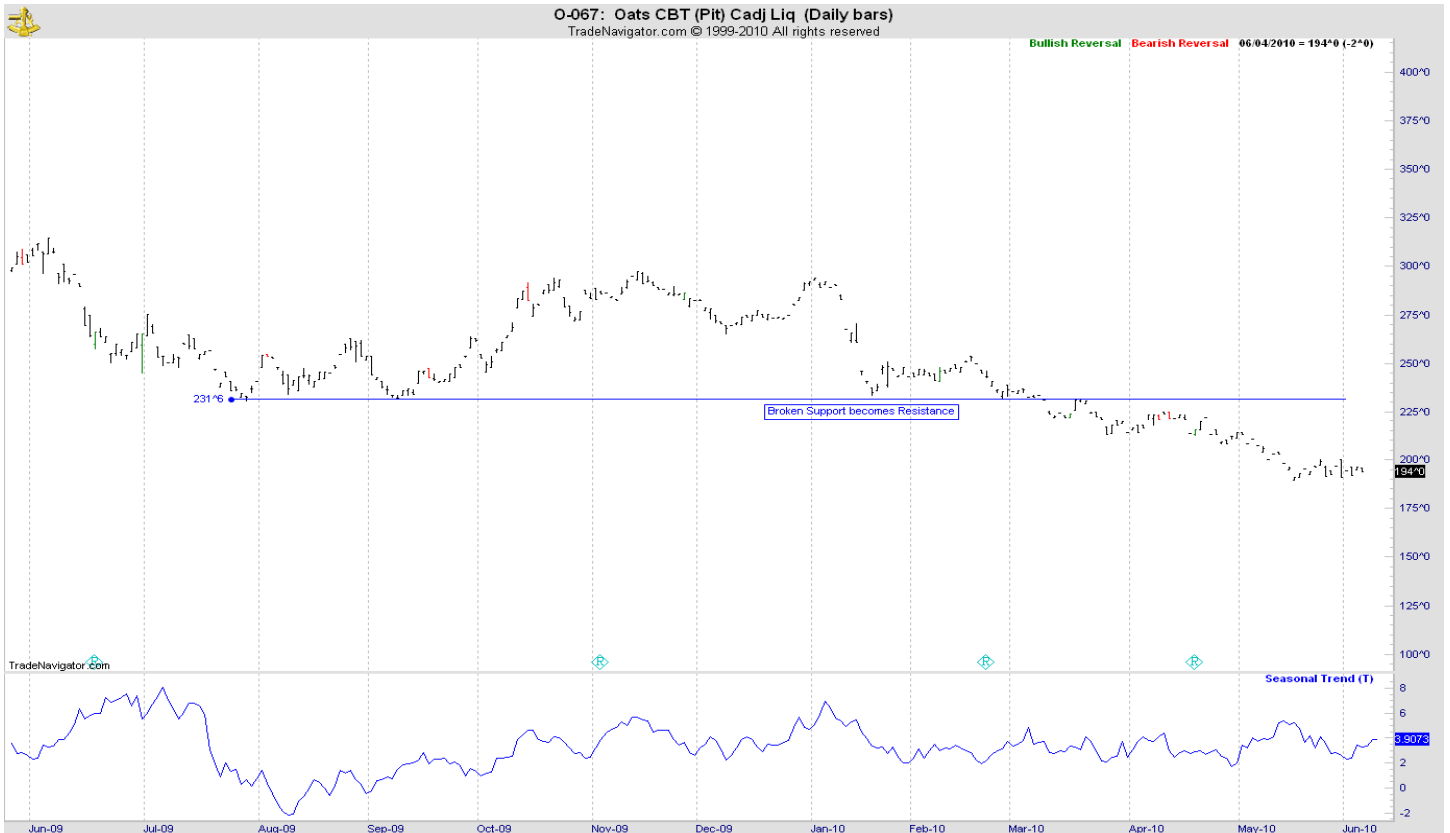
WEEKLY CHICAGO



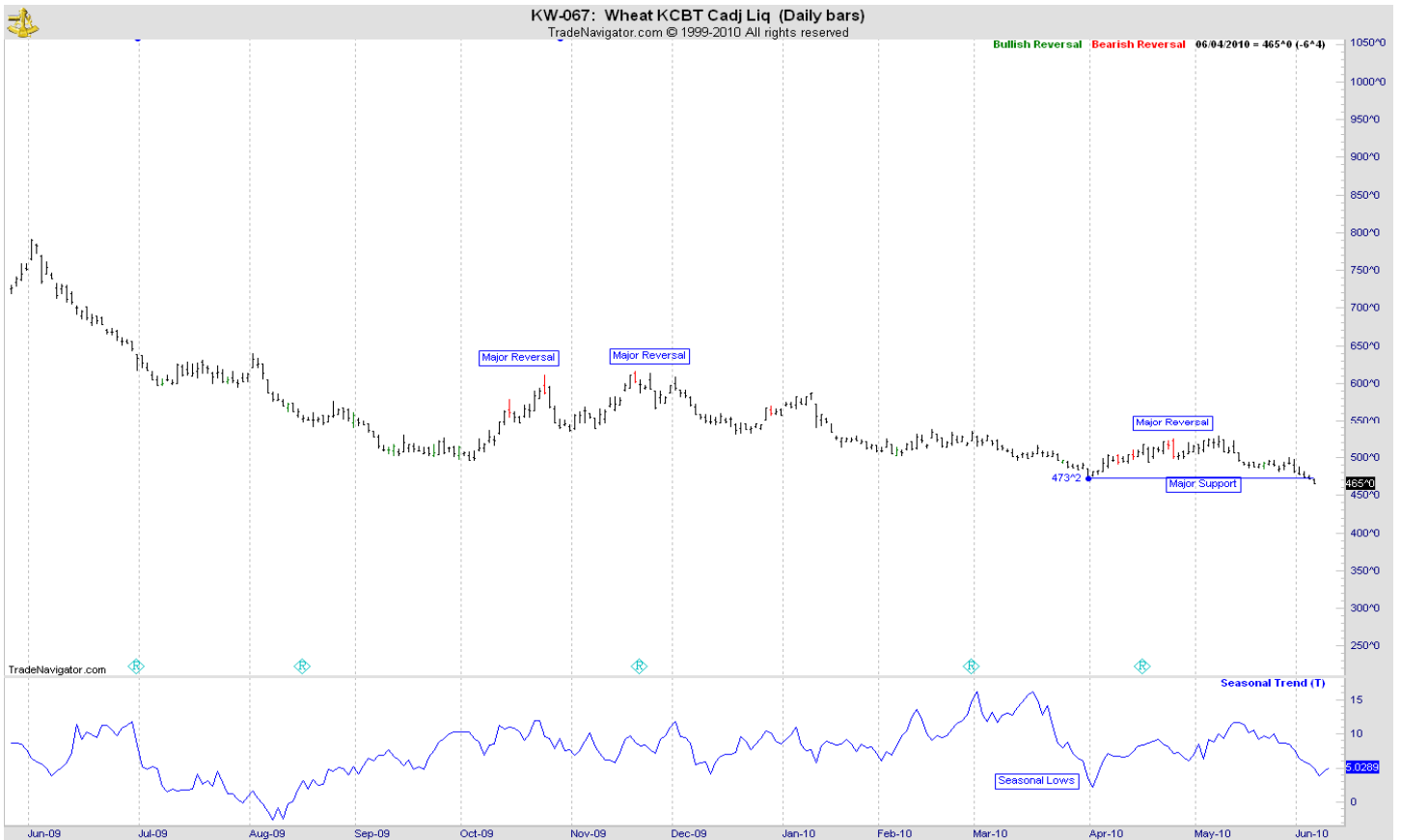
CHICAGO WHEAT



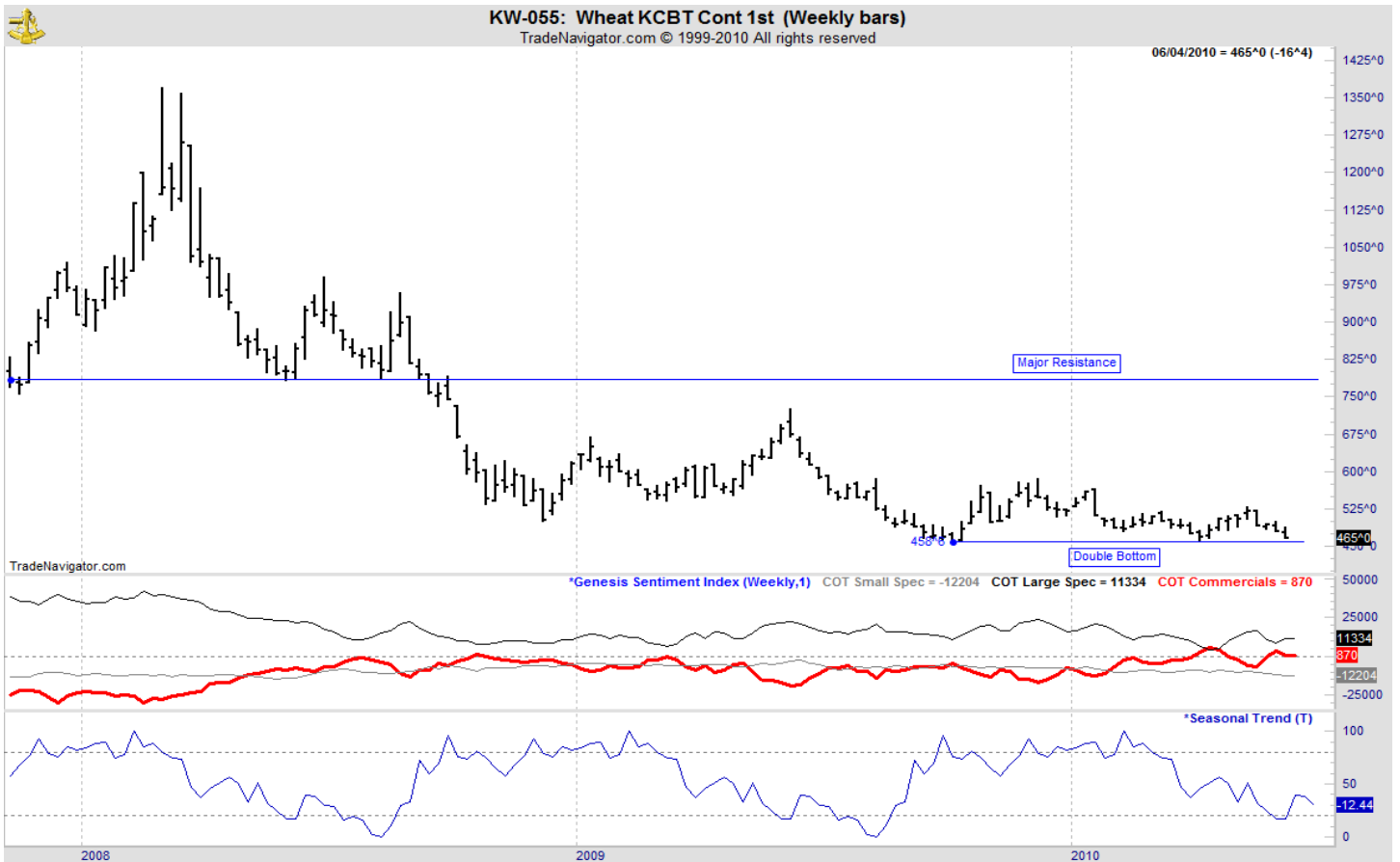
OATS



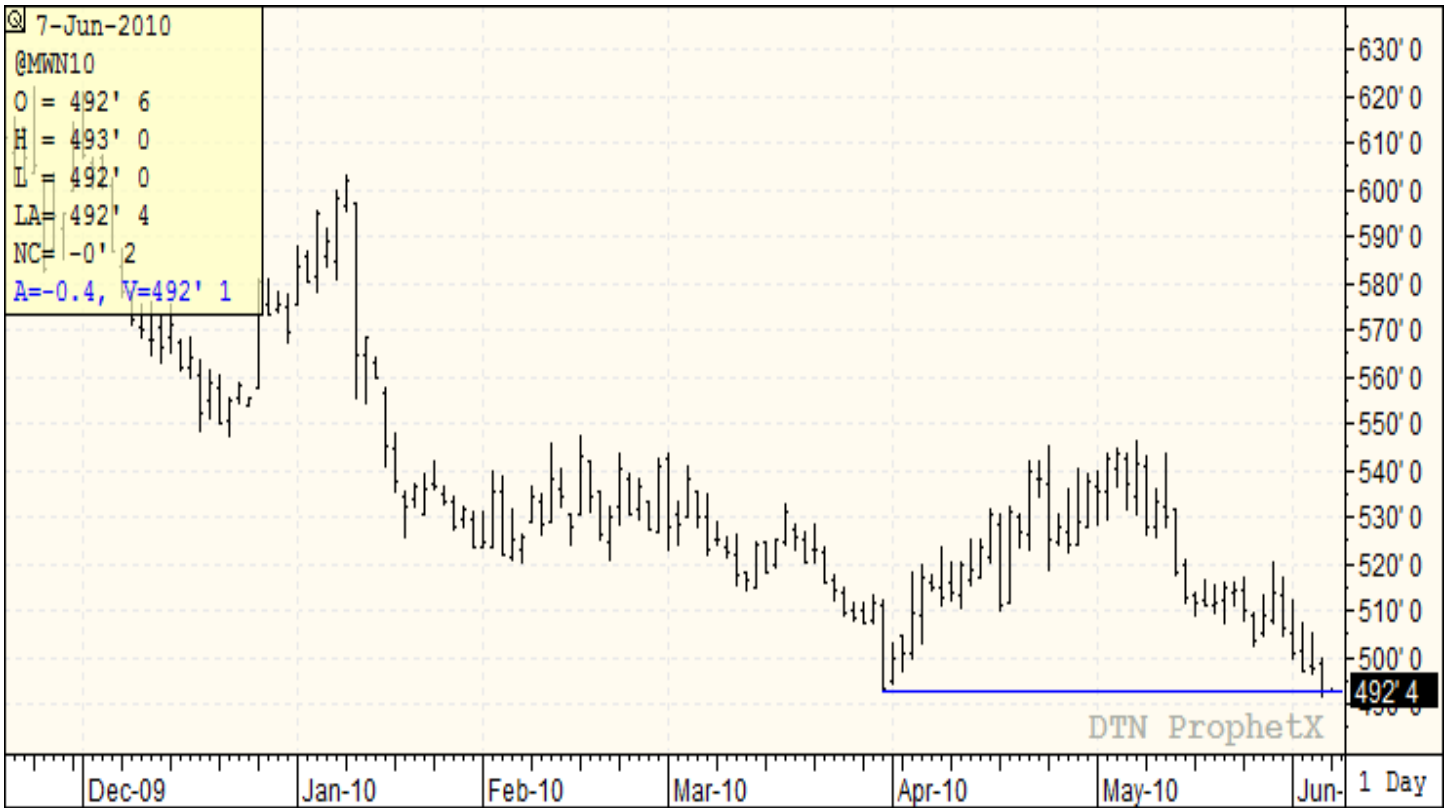
KANSAS CITY WHEAT



WEEKLY KANSAS CITY



MINNEAPOLIS WHEAT



WEEKLY MINNEAPOLIS

