

MIDWEST MARKET SOLUTIONS, INC.

"THE LEADING EDGE IN COMMODITIES"

327 BROADWAY
YANKTON, SOUTH DAKOTA 57078
866-203-9655
605-260-3063 FAX
WWW.MIDWESTMARKETSOLUTIONS.COM



THE MARKET INSIDER NEWSLETTER

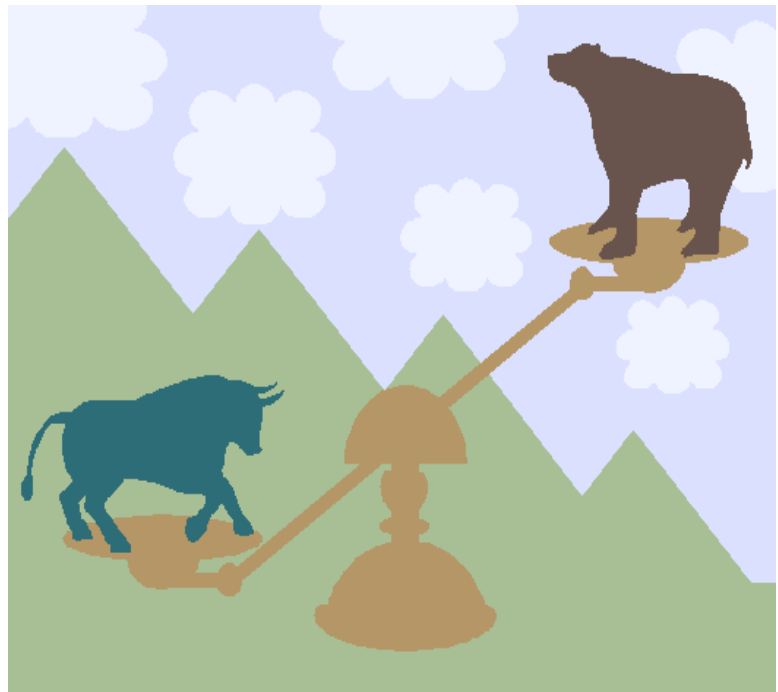
June 14, 2010

By: Brian Hoops, President
Midwest Market Solutions, Inc.

VISIT OUR WEBSITE AT www.midwestmarketsolutions.com FOR MORE INFORMATION.

Inside This Issue:

THE JUNE SUPPLY/DEMAND REPORT	2
CORN OUTLOOK	3,4
SOYBEAN OUTLOOK	5-7
WHEAT OUTLOOK	8-11
LIVE CATTLE OUTLOOK	12
FEEDER CATTLE OUTLOOK	13
LEAN HOG OUTLOOK	14
SPECULATOR'S CORNER	15
NEWS	16
WEATHER	17
CALENDAR OF EVENTS	18
MARGIN REQUIREMENTS	19
COMPANY INFO	20
DISCLAIMER	20



WHEAT



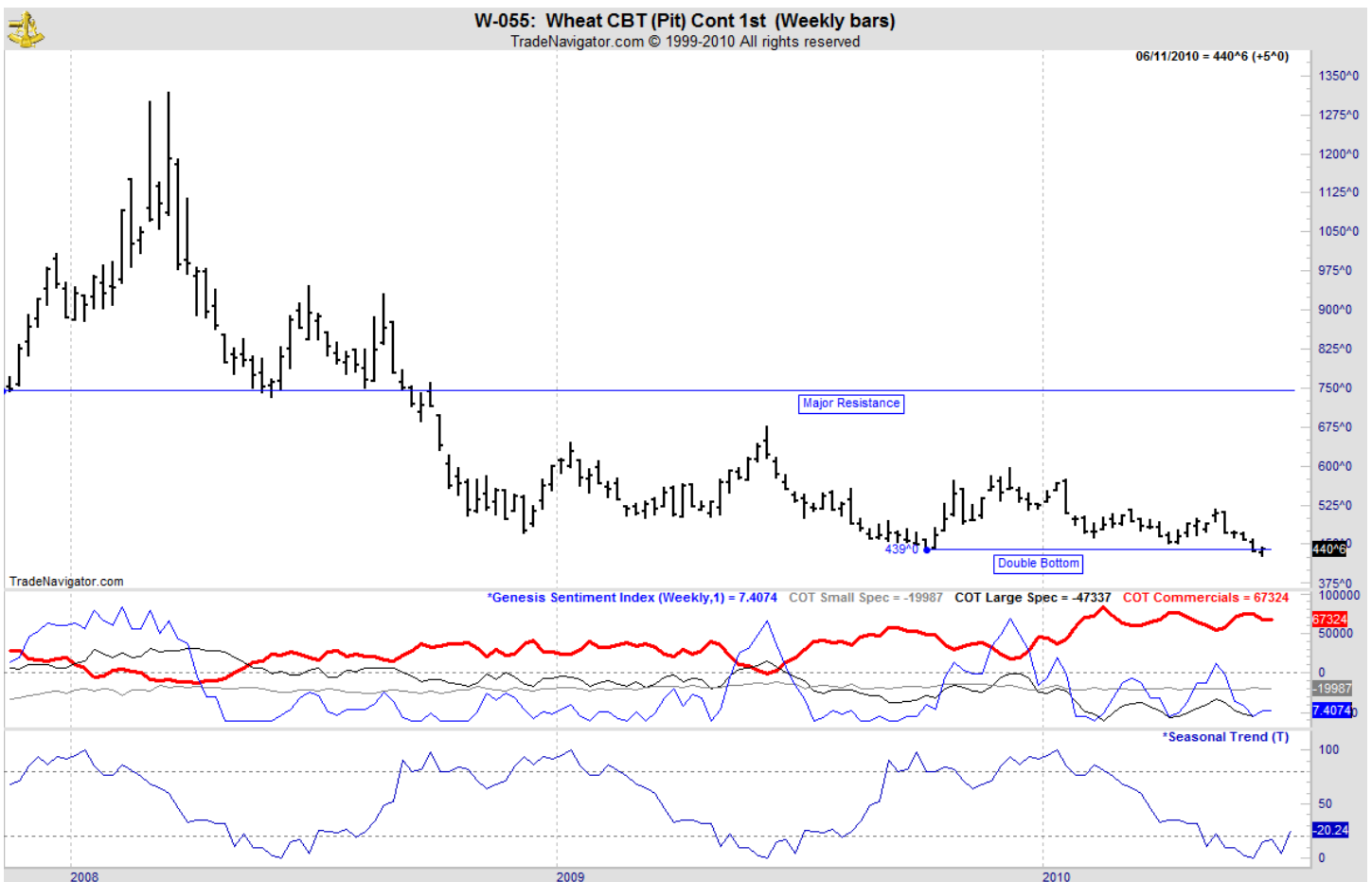
ANALYSIS

For the week, Chicago wheat closed \$.05 higher; Kansas City wheat \$.02 higher and Minneapolis wheat \$.09 higher. Last week, Egypt purchased 180,000 mts of Russian and French wheat, snubbing the U.S. once again. Weather for the hard red winter wheat harvest continues to be favorable. Early results from Texas and Oklahoma seem to suggest yields of 40 to 50 bushels per acre with test weights running around 60-63 pounds per bushel. The USDA reported only 3% of the winter wheat crop has been harvested. The USDA reported the U.S. spring wheat is rated 84% g/e, down 1% from last week, with 1% of the crop rate poor to very poor. A year ago, 73% of the crop is rated g/e with 4% rated p/vp. The weekly export sales report showed net sales for the 2010/11 marketing year, which began June 1, totaled 118,300 metric tons. Increases reported for the Philippines (50,000 MT), Mexico (40,300 MT), Nigeria (23,300 MT), and Colombia (22,900 MT), were partially offset by decreases for Japan (25,200 MT) and unknown destinations (2,100 MT). A total of 982,900 metric tons in sales were carried over from the 2009/10 marketing year, which ended May 31. This year's exports stand at 153 mb vs. the USDA forecast of 900 mb.

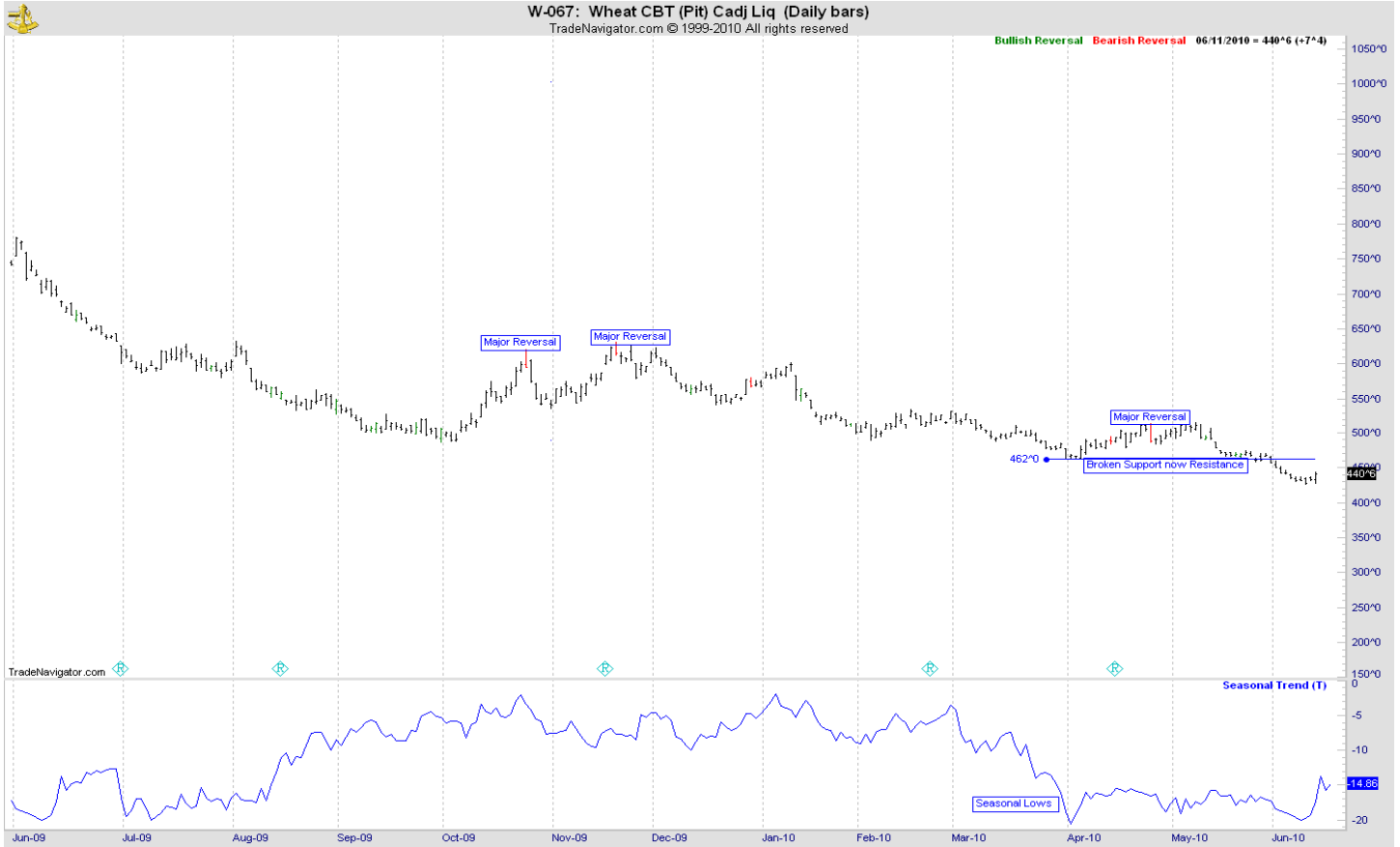
STRATEGY & OUTLOOK

Producers began to scale into 2010 crop sales at \$6.05 off the July Kansas City contract. With the poor cash basis levels, producers should look to put wheat product under government loan and sell for the market carry in the next nine months. Basis levels are also likely to improve during that timeframe.

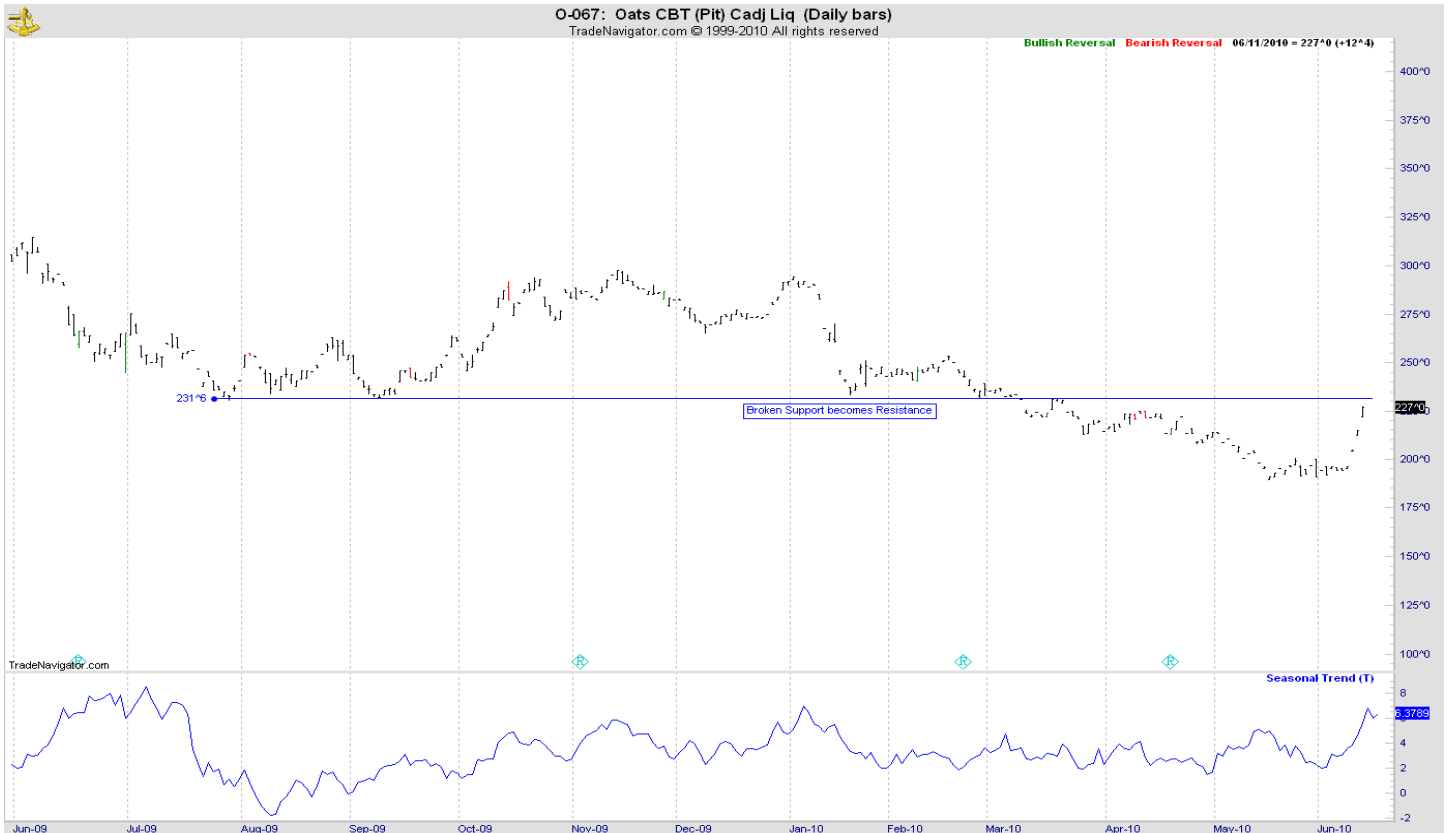
WEEKLY CHICAGO



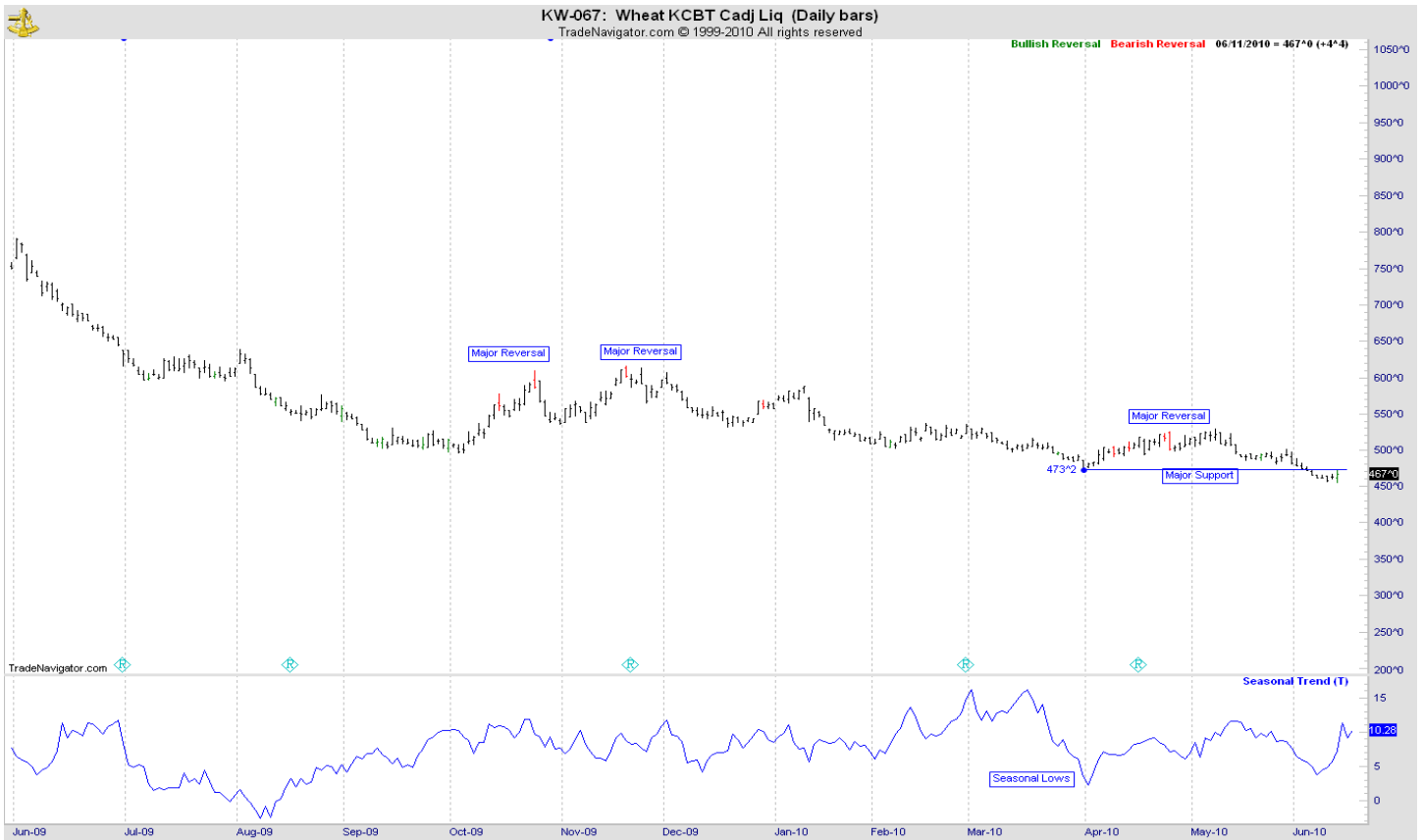
CHICAGO WHEAT



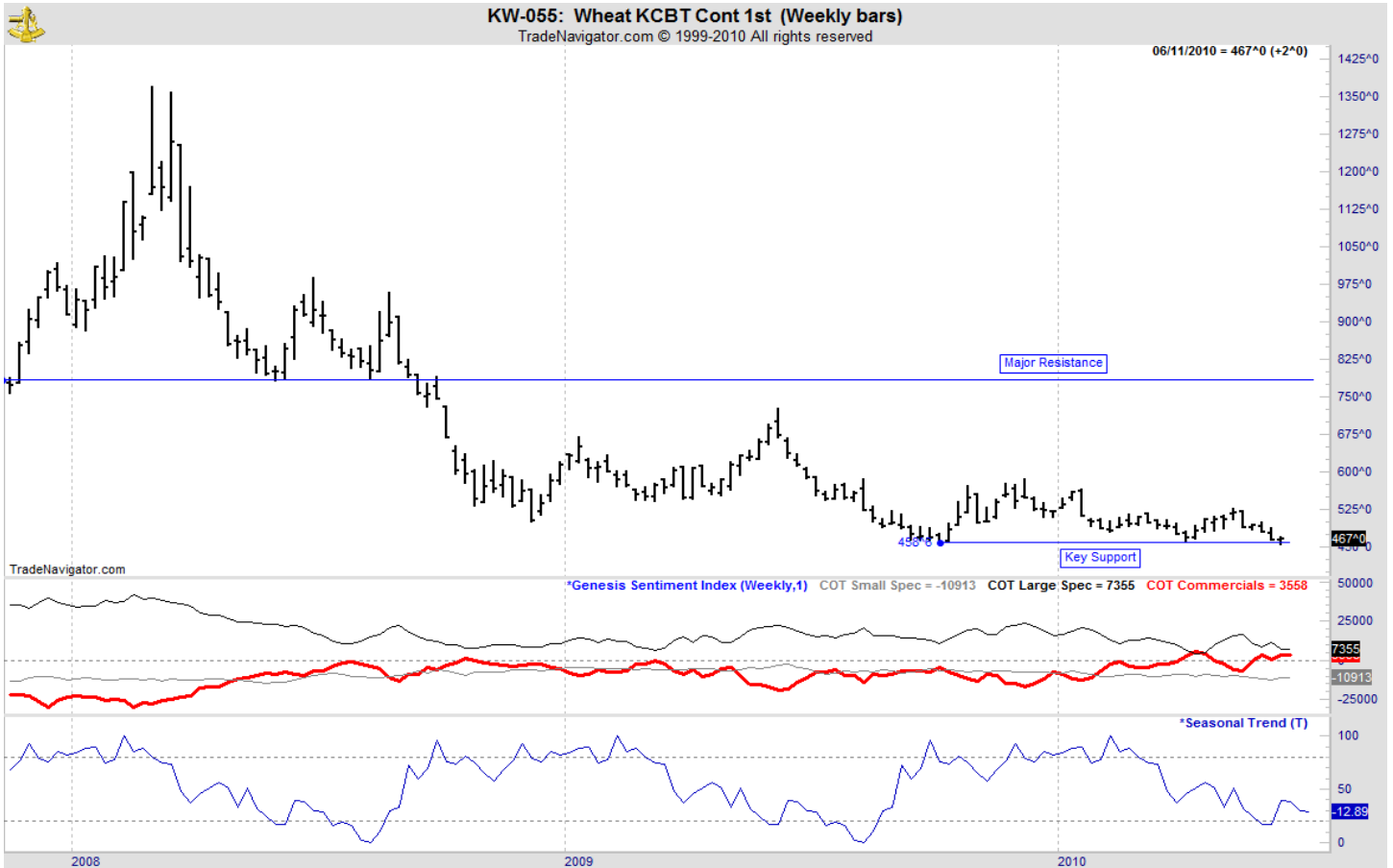
OATS



KANSAS CITY WHEAT



WEEKLY KANSAS CITY



MINNEAPOLIS WHEAT



WEEKLY MINNEAPOLIS

