

MIDWEST MARKET SOLUTIONS, INC.

"THE LEADING EDGE IN COMMODITIES"

327 BROADWAY
YANKTON, SOUTH DAKOTA 57078
866-203-9655
605-260-3063 FAX
WWW.MIDWESTMARKETSOLUTIONS.COM



THE MARKET INSIDER NEWSLETTER

June 15, 2009

By: Brian Hoops, President
Midwest Market Solutions, Inc.

VISIT OUR WEBSITE AT www.midwestmarketsolutions.com FOR MORE INFORMATION.

Inside This Issue:

THE JUNE SUPPLY/DEMAND REPORT	2
CORN OUTLOOK	3,4
SOYBEAN OUTLOOK	5-7
WHEAT OUTLOOK	8-11
LIVE CATTLE OUTLOOK	12
FEEDER CATTLE OUTLOOK	13
LEAN HOG OUTLOOK	14
NEWS	15
NEWS	16
WEATHER	17
CALENDAR OF EVENTS	18
MARGIN REQUIREMENTS	19
COMPANY INFO	20
DISCLAIMER	20



WHEAT



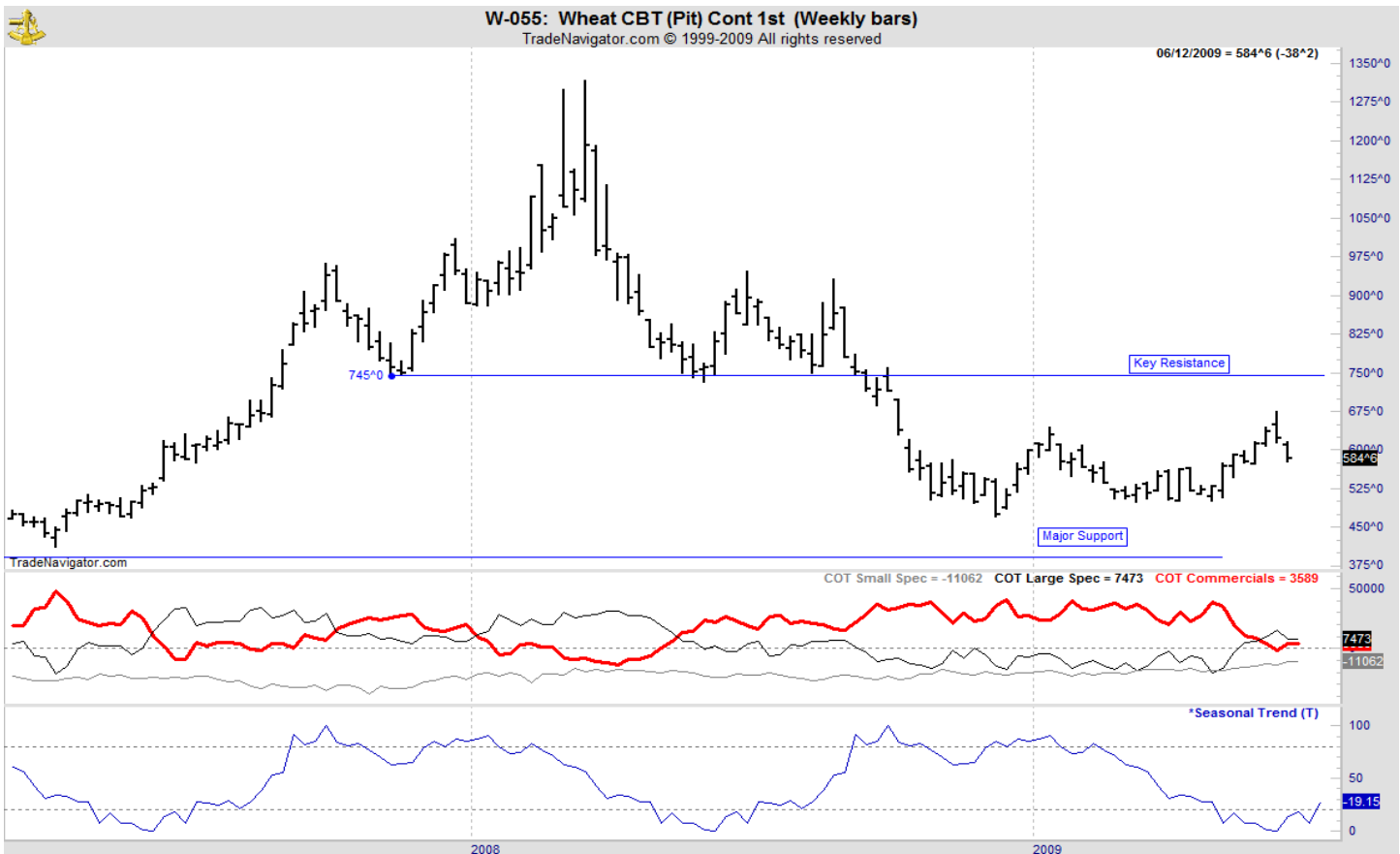
ANALYSIS

For the week, Chicago wheat closed \$.38 1/4 lower; Kansas City wheat \$.38 lower and Minneapolis wheat \$.11 lower. The weekly export sales report showed net sales for the 2009/10 marketing year, which began June 1, totaled 353,900 metric tons. Increases reported for Nigeria (71,600 MT, including 25,000 MT switched from unknown destinations), the Philippines (68,000 MT), Colombia (47,000 MT), Thailand (40,000 MT), South Korea (37,900 MT), and Indonesia (35,000 MT), were partially offset by decreases for unknown destinations (27,000 MT) and Guatemala (9,900 MT). This year's U.S. wheat sales remain behind last year's strong sale performance with commitments of 979 mb this year vs. 1,249 mb a year ago. The U.S. now needs to export 31.5 mb each week to reach the USDA forecast. The USDA rated the spring wheat crop at 72% g/e vs. 63% last year. Harvest has started in the southern wheat states. The USDA estimated harvest at 5% completed by June 7. Texas is 27% completed with Oklahoma 9% finished.

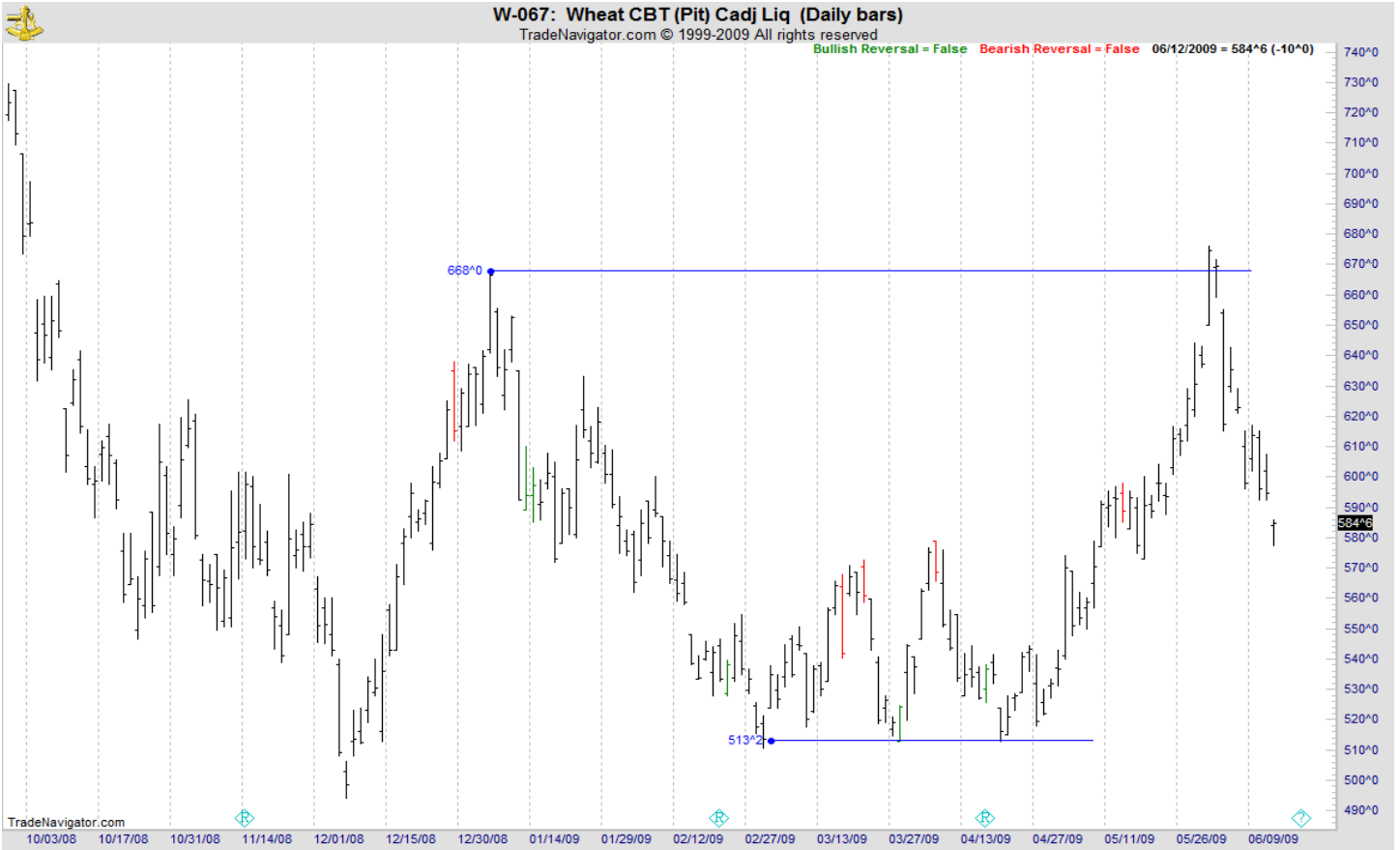
STRATEGY & OUTLOOK

Producers should have now added to hedges and/or rolled option hedges to a higher price level as July KC wheat has reached the long term price objective of \$6.80 to \$7.00. A combination of hedges, options and cash sales is a very effective way to manage price risk for producers. The next target for winter wheat producers is \$7.45 to \$7.75 against the December Kansas City market.

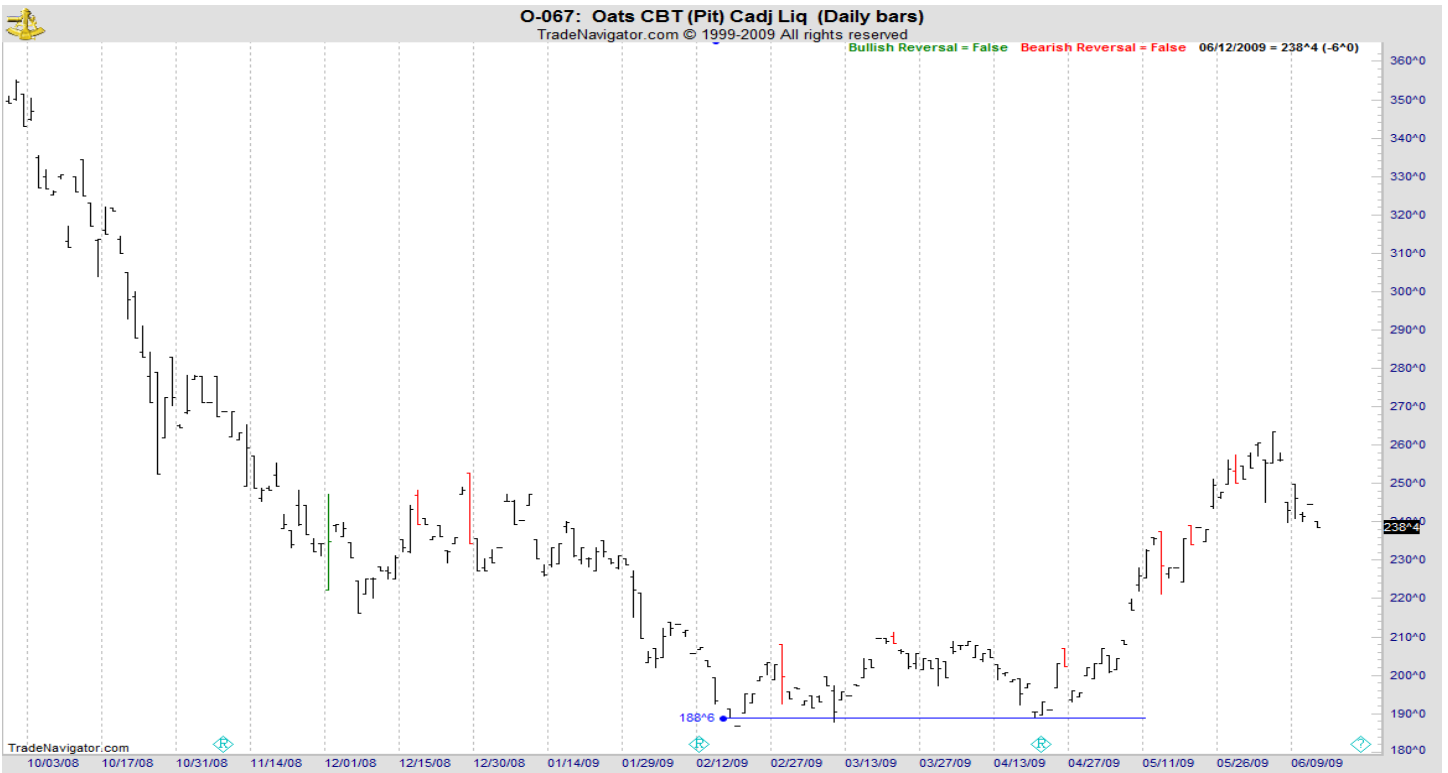
WEEKLY CHICAGO



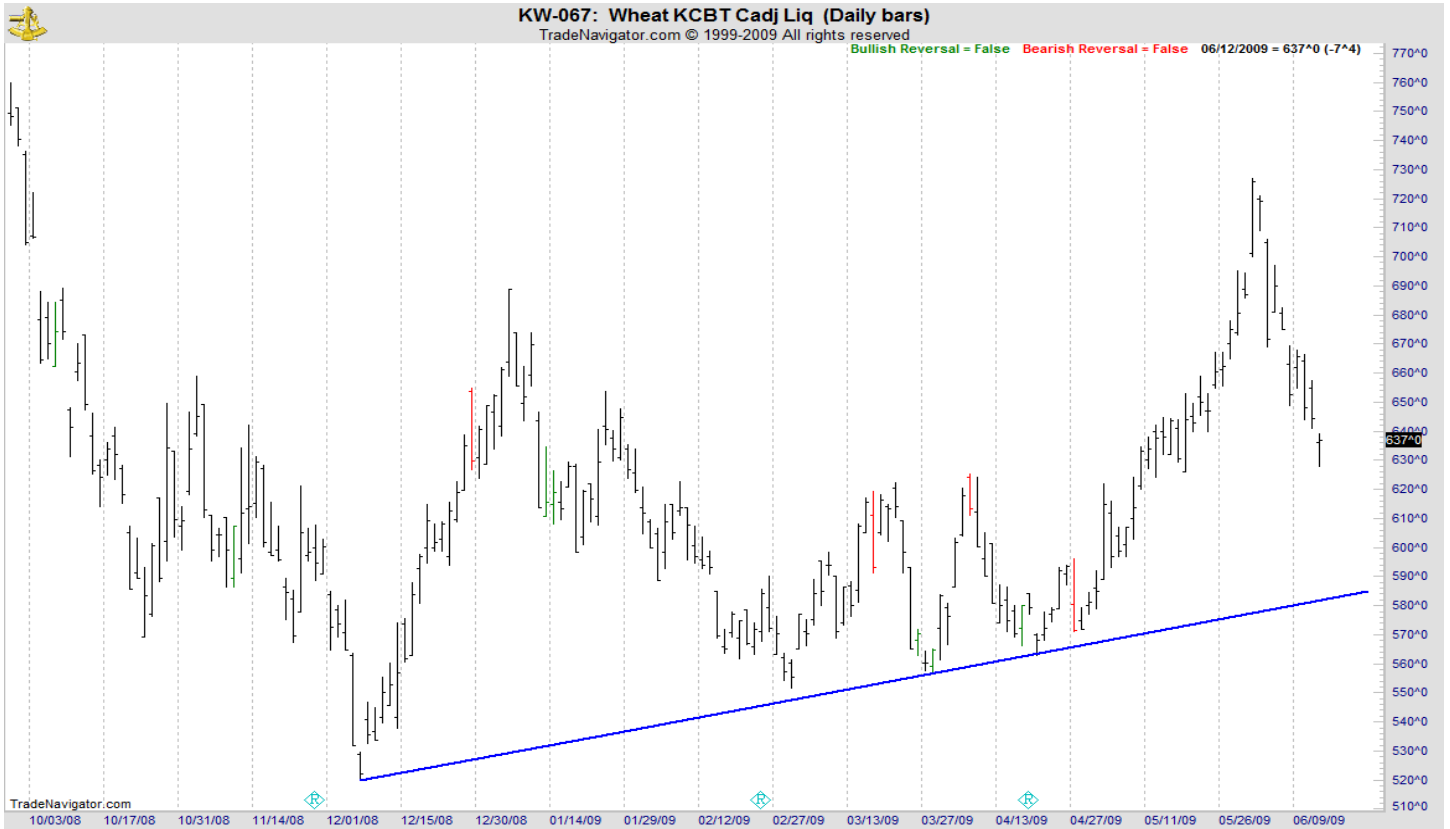
CHICAGO WHEAT



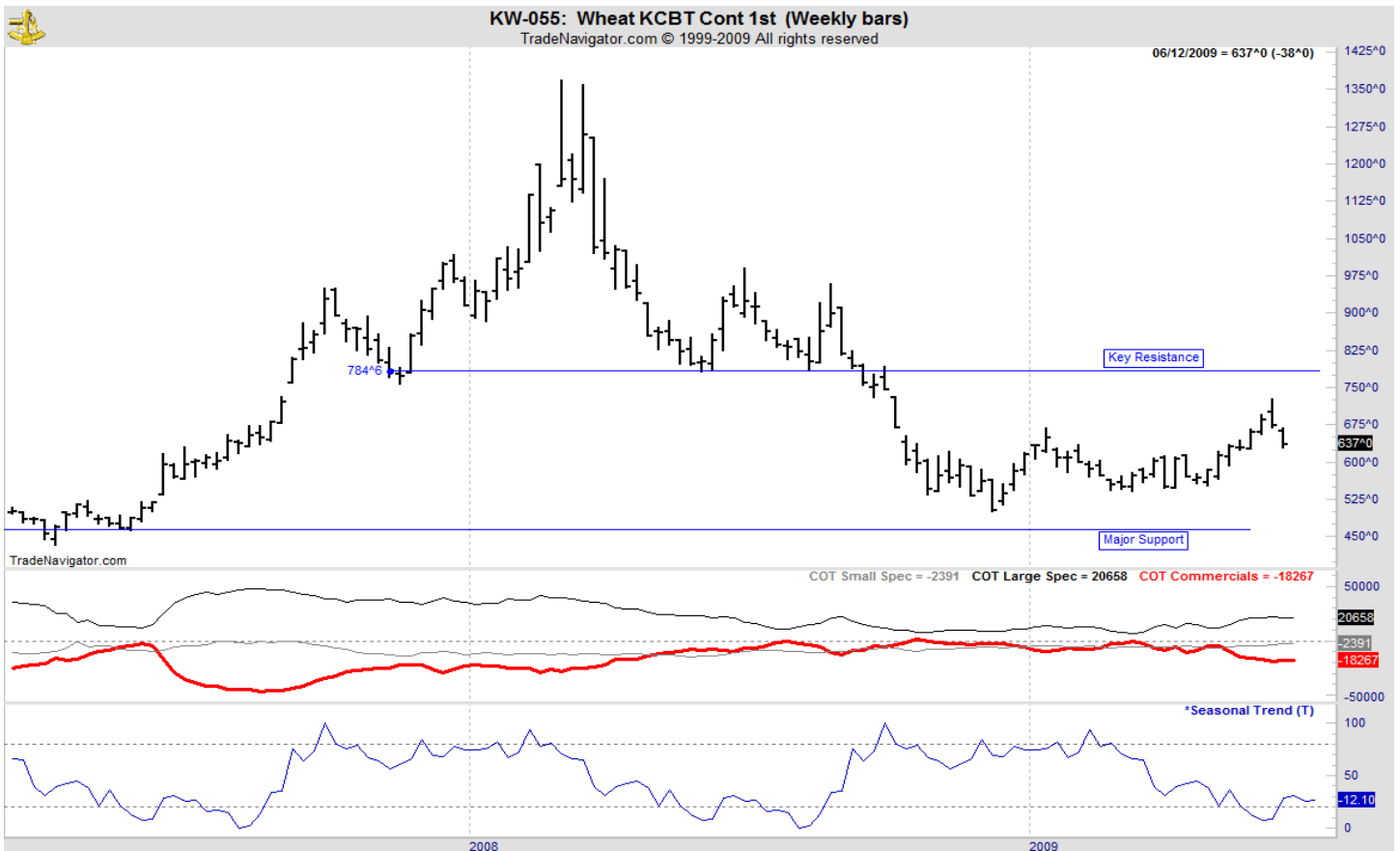
OATS



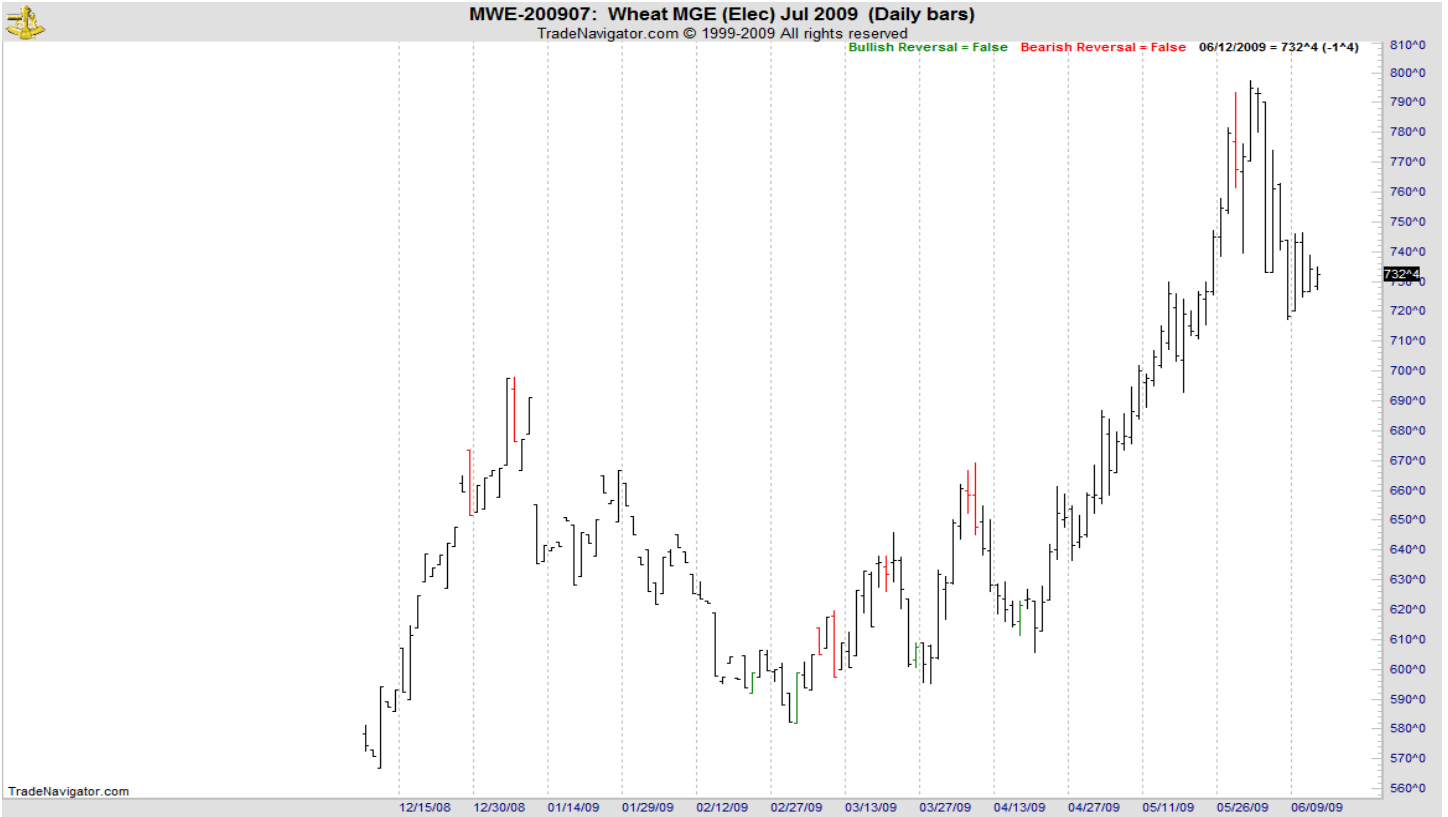
KANSAS CITY WHEAT



WEEKLY KANSAS CITY



MINNEAPOLIS WHEAT



WEEKLY MINNEAPOLIS

