

MIDWEST MARKET SOLUTIONS, INC.

"THE LEADING EDGE IN COMMODITIES"

327 BROADWAY
YANKTON, SOUTH DAKOTA 57078
866-203-9655
605-260-3063 FAX
WWW.MIDWESTMARKETSOLUTIONS.COM



THE MARKET INSIDER NEWSLETTER

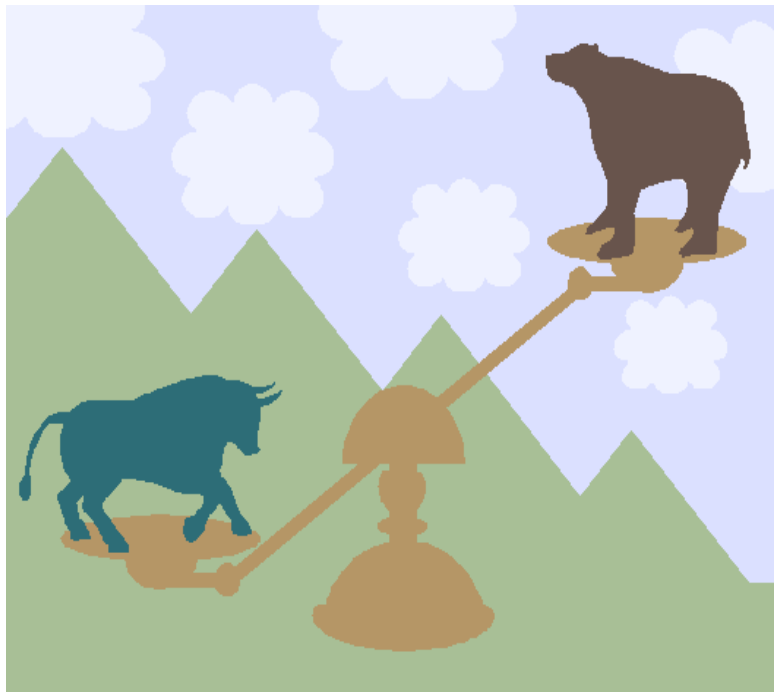
July 6, 2010

By: Brian Hoops, President
Midwest Market Solutions, Inc.

VISIT OUR WEBSITE AT www.midwestmarketsolutions.com FOR MORE INFORMATION.

Inside This Issue:

THE QUARTERLY STOCKS AND ACREAGE REPORT	2
CORN OUTLOOK	3,4
SOYBEAN OUTLOOK	5-7
WHEAT OUTLOOK	8-11
LIVE CATTLE OUTLOOK	12
FEEDER CATTLE OUTLOOK	13
LEAN HOG OUTLOOK	14
SPECULATOR'S CORNER	15
NEWS	16
WEATHER	17
CALENDAR OF EVENTS	18
MARGIN REQUIREMENTS	19
COMPANY INFO	20
DISCLAIMER	20



WHEAT



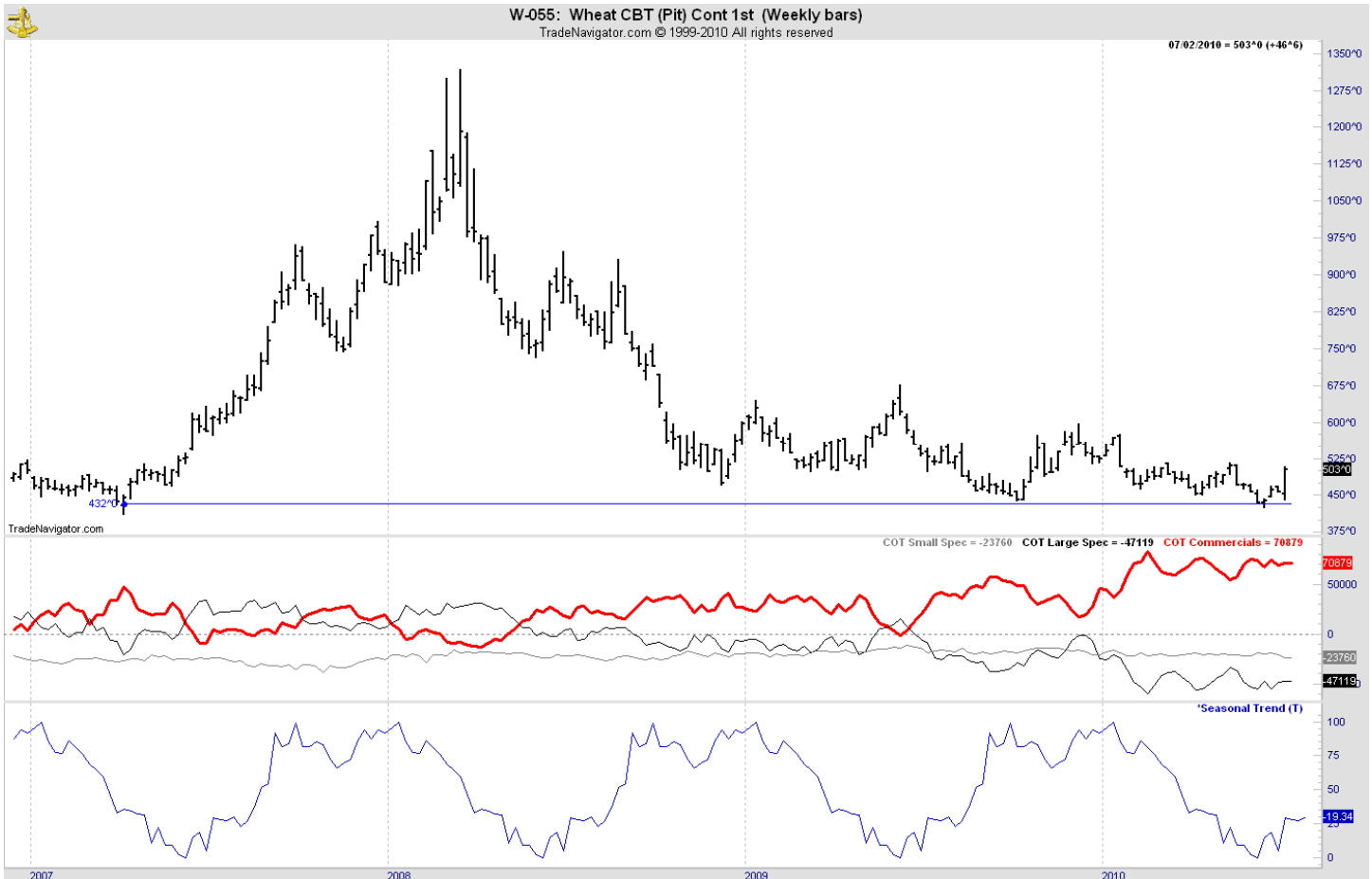
ANALYSIS

For the week, Chicago wheat closed \$.46 1/2 higher; Kansas City wheat \$.32 1/4 higher and Minneapolis wheat \$.07 1/4 higher. Last week, Egypt purchased 120,000 mts of wheat from Russia. Winter wheat harvest is progressing and the overall average protein level is 11.7%, down from 12.1% in 2009, according to Plains Grains Inc., a nonprofit HRW wheat marketing organization. On average, test weights were 60.8 pounds per bushel, down a pound per bushel from the previous week because of rain and slightly higher than last year's average of 60.6 pounds. Farmers have reported yields of 40 to 60 bushels per acre, test weights at 60 pounds per bushel, and protein values averaging 12%, the report said. The USDA reported the U.S. spring wheat is rated 84% g/e, unchanged from last week. Only 2% of the crop rate poor to very poor. A year ago, 76% of the crop was rated g/e with 6% rated p/vp. Harvest is progressing with 38% of the winter wheat harvest completed, behind the average of 39%. The weekly export sales report showed net sales of 418,400 MT for the 2010/11 marketing year were primarily for Mexico (143,800 MT), Japan (118,600 MT), Colombia (35,900 MT, including 30,000 MT switched from unknown destinations), South Korea (25,600 MT), Brazil (25,000 MT), and Nigeria (12,000 MT). Decreases were reported for the Dominican Republic (2,500 MT) and Indonesia (2,400 MT). This year's exports stand at 230 mb vs. the USDA forecast of 900 mb.

STRATEGY & OUTLOOK

Producers began to scale into 2010 crop sales at \$6.05 off the July Kansas City contract. With the poor cash basis levels, producers should look to put wheat product under government loan and sell for the market carry in the next nine months. Basis levels are also likely to improve during that timeframe.

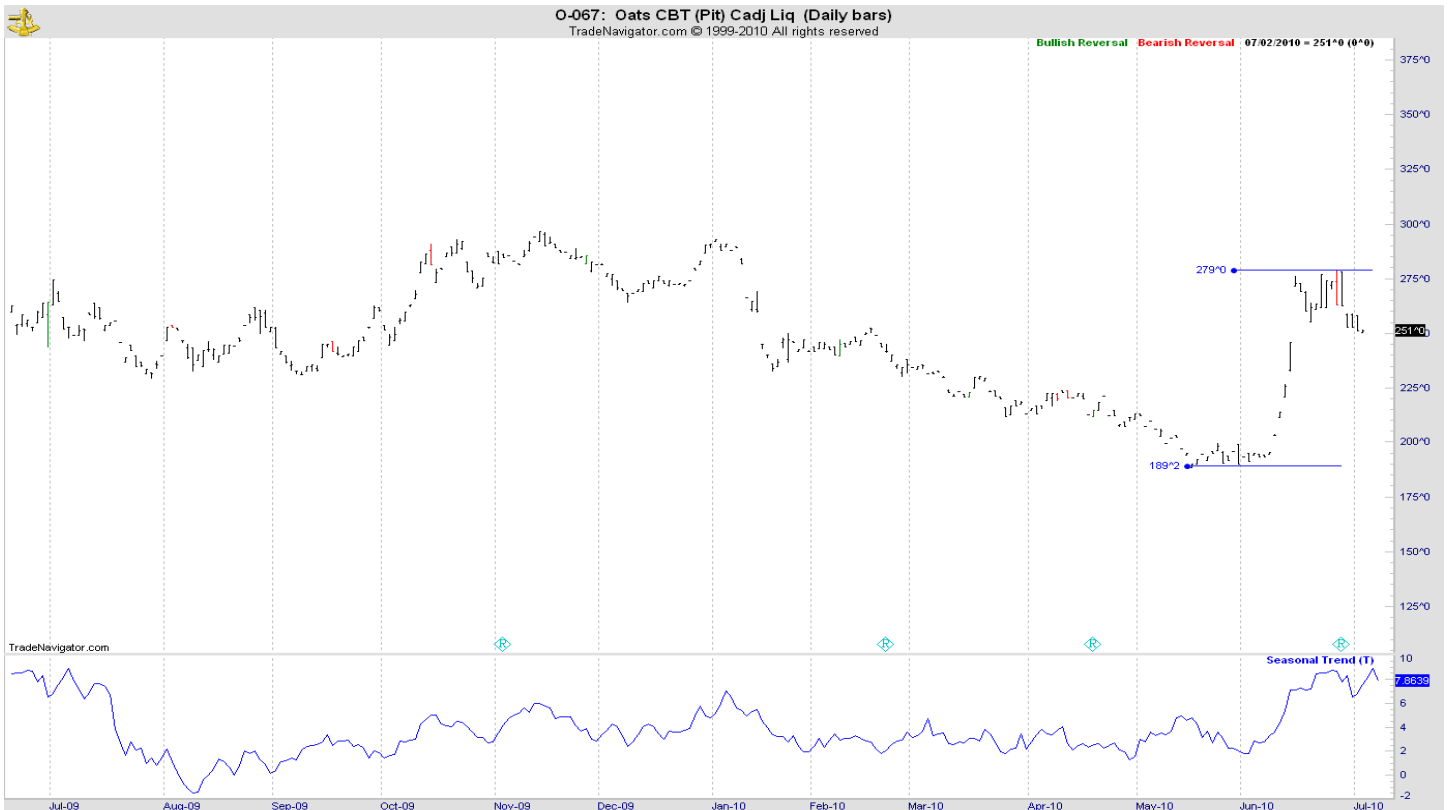
WEEKLY CHICAGO



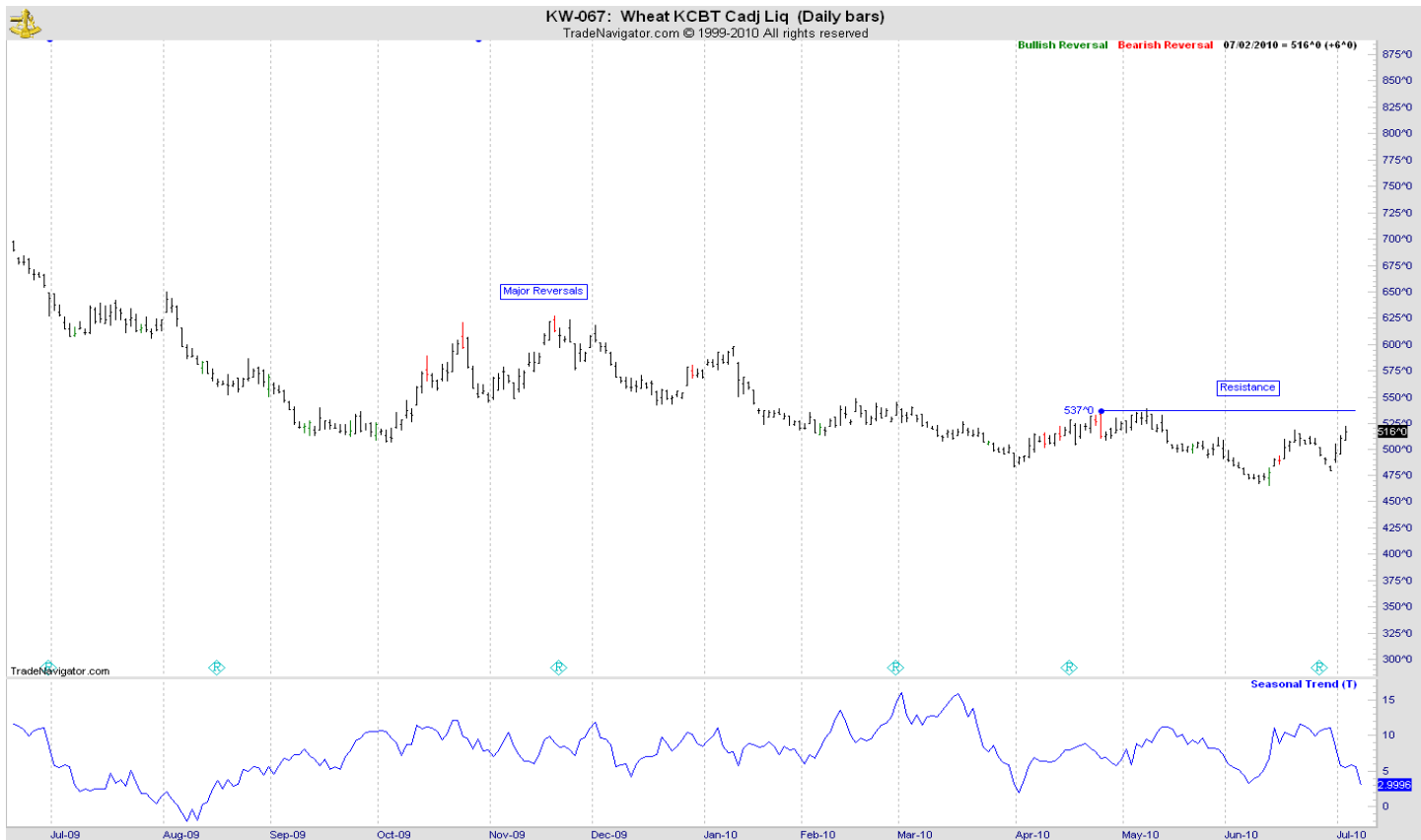
CHICAGO WHEAT



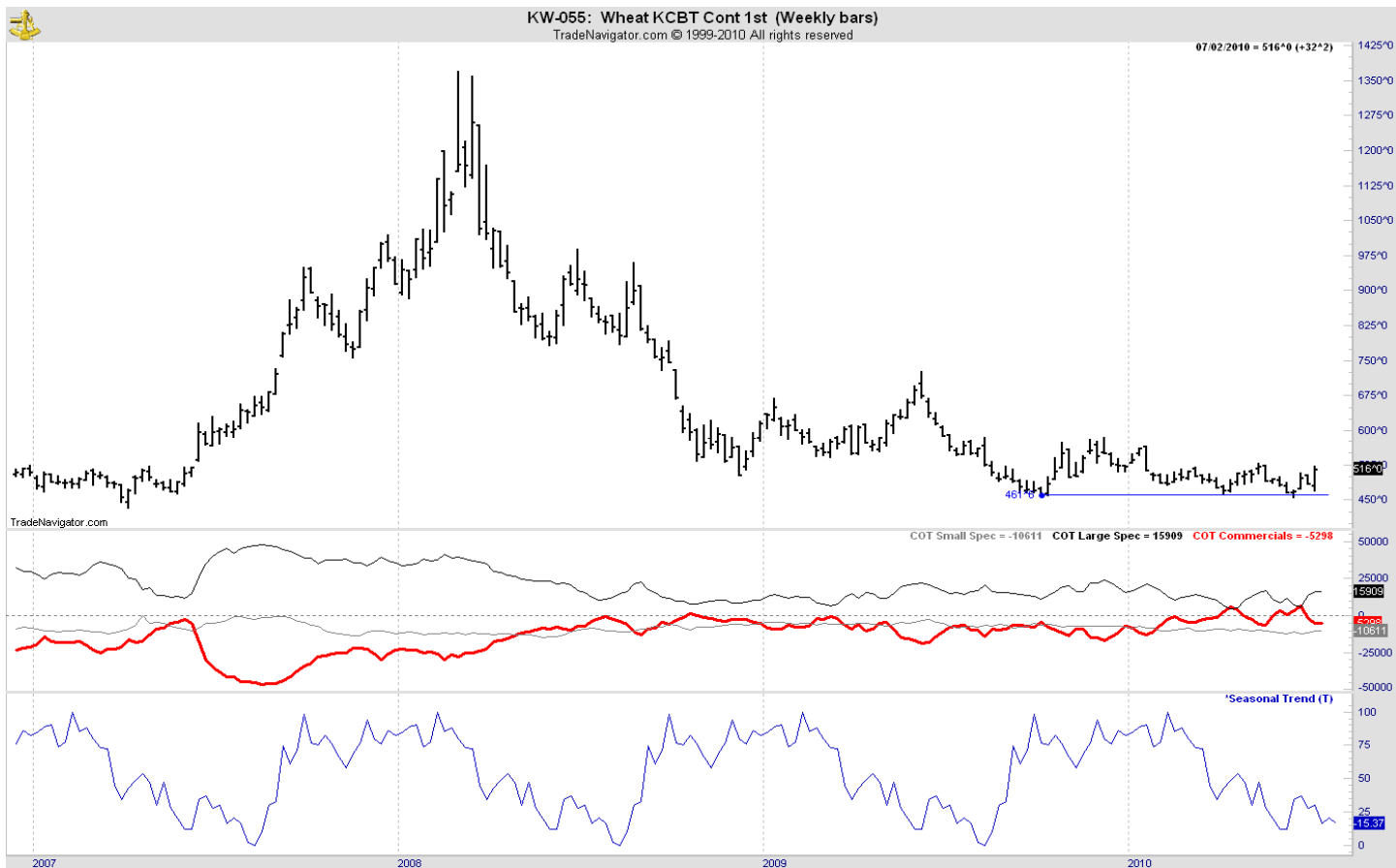
OATS



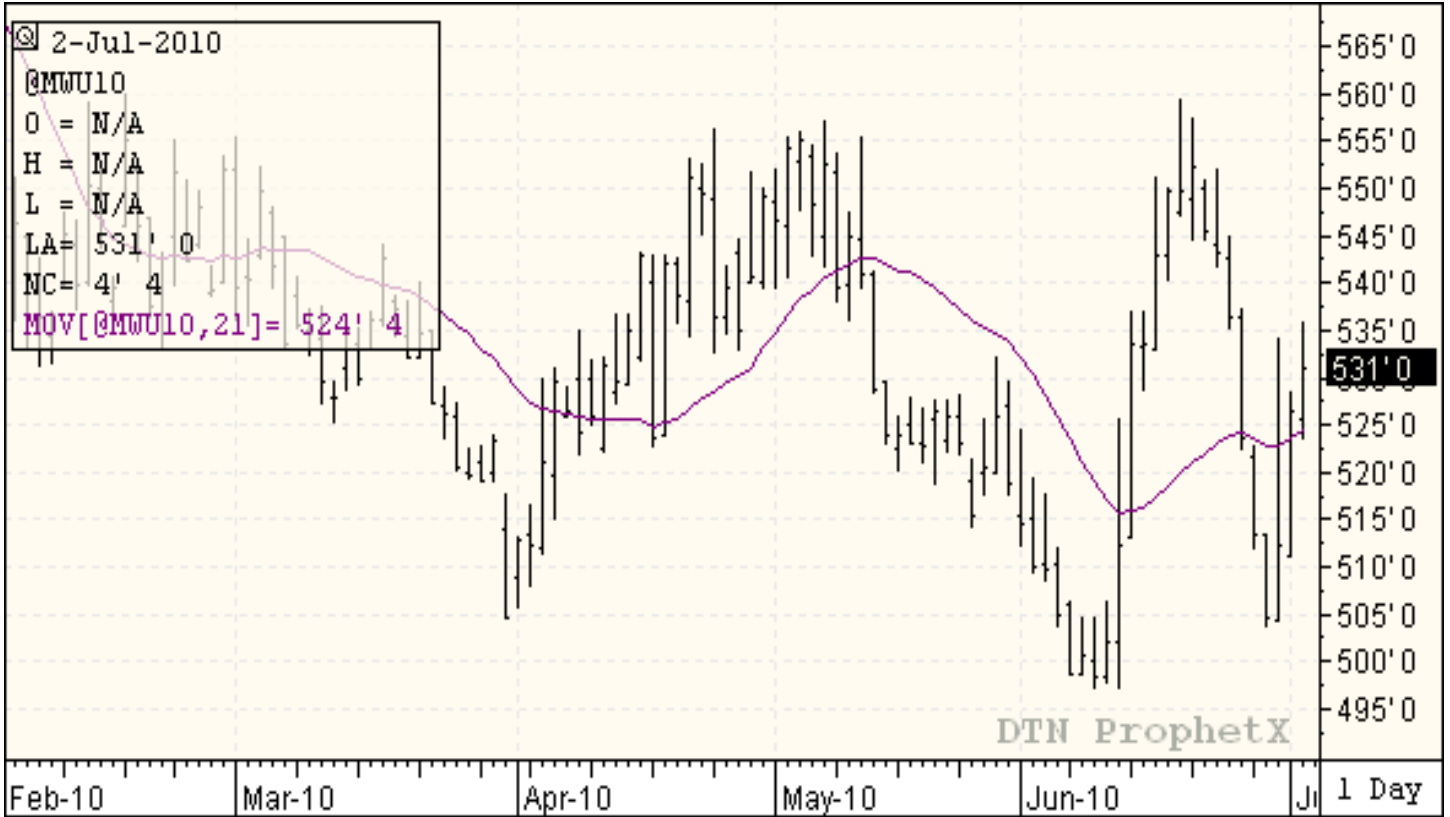
KANSAS CITY WHEAT



WEEKLY KANSAS CITY



MINNEAPOLIS WHEAT



WEEKLY MINNEAPOLIS

