

MIDWEST MARKET SOLUTIONS, INC.

"THE LEADING EDGE IN COMMODITIES"

327 BROADWAY
YANKTON, SOUTH DAKOTA 57078
866-203-9655
605-260-3063 FAX
WWW.MIDWESTMARKETSOLUTIONS.COM



THE MARKET INSIDER NEWSLETTER

July 12, 2010

By: Brian Hoops, President
Midwest Market Solutions, Inc.

VISIT OUR WEBSITE AT www.midwestmarketsolutions.com FOR MORE INFORMATION.

Inside This Issue:

THE JULY SUPPLY/DEMAND REPORT	2
CORN OUTLOOK	3,4
SOYBEAN OUTLOOK	5-7
WHEAT OUTLOOK	8-11
LIVE CATTLE OUTLOOK	12
FEEDER CATTLE OUTLOOK	13
LEAN HOG OUTLOOK	14
SPECULATOR'S CORNER	15
NEWS	16
WEATHER	17
CALENDAR OF EVENTS	18
MARGIN REQUIREMENTS	19
COMPANY INFO	20
DISCLAIMER	20



WHEAT



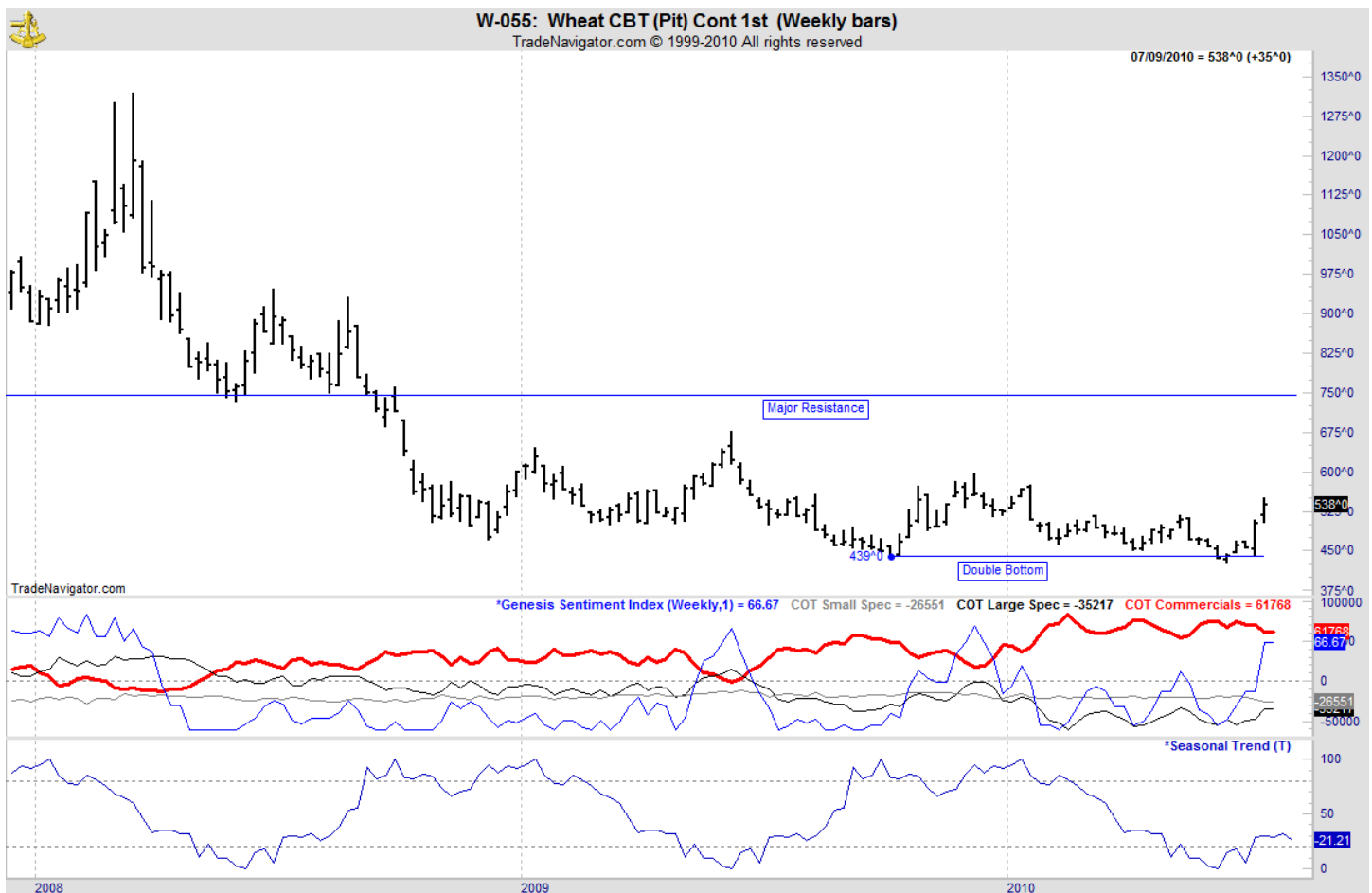
ANALYSIS

For the week, Chicago wheat closed \$.35 higher; Kansas City wheat \$.37 1/4 higher and Minneapolis wheat \$.32 higher. Last week, Egypt purchased 60,000 mts of wheat from Russia. Wheat has rallied on massive fund short-covering as world wide weather concerns has forced the funds out of their comfortable short positions. Too wet conditions in Canada and hot and dry conditions in Europe, has threatened the world's wheat production estimates. The USDA reported the U.S. spring wheat is rated 85% g/e, up 1% from last week. Only 2% of the crop rate poor to very poor. A year ago, 72% of the crop was rated g/e with 8% rated p/vp. Biggest spring wheat producing state North Dakota is rated 86% g/e. Harvest is progressing with 54% of the winter wheat harvest completed, in line with the average of 53%. The weekly export sales report showed net sales of 513,600 MT for the 2010/11 marketing year were primarily for Brazil (85,000 MT), the Philippines (80,700 MT), Peru (65,100 MT, including 24,000 MT switched from the Dominican Republic and 6,000 MT switched from unknown destinations), Indonesia (61,500 MT, including 51,000 MT switched from unknown destinations), Thailand (50,800 MT), and Chile (41,800 MT). Decreases were reported for unknown destinations (48,700 MT) and the Dominican Republic (24,000 MT). This year's exports stand at 249 mb vs. the USDA forecast of 1.000 bb.

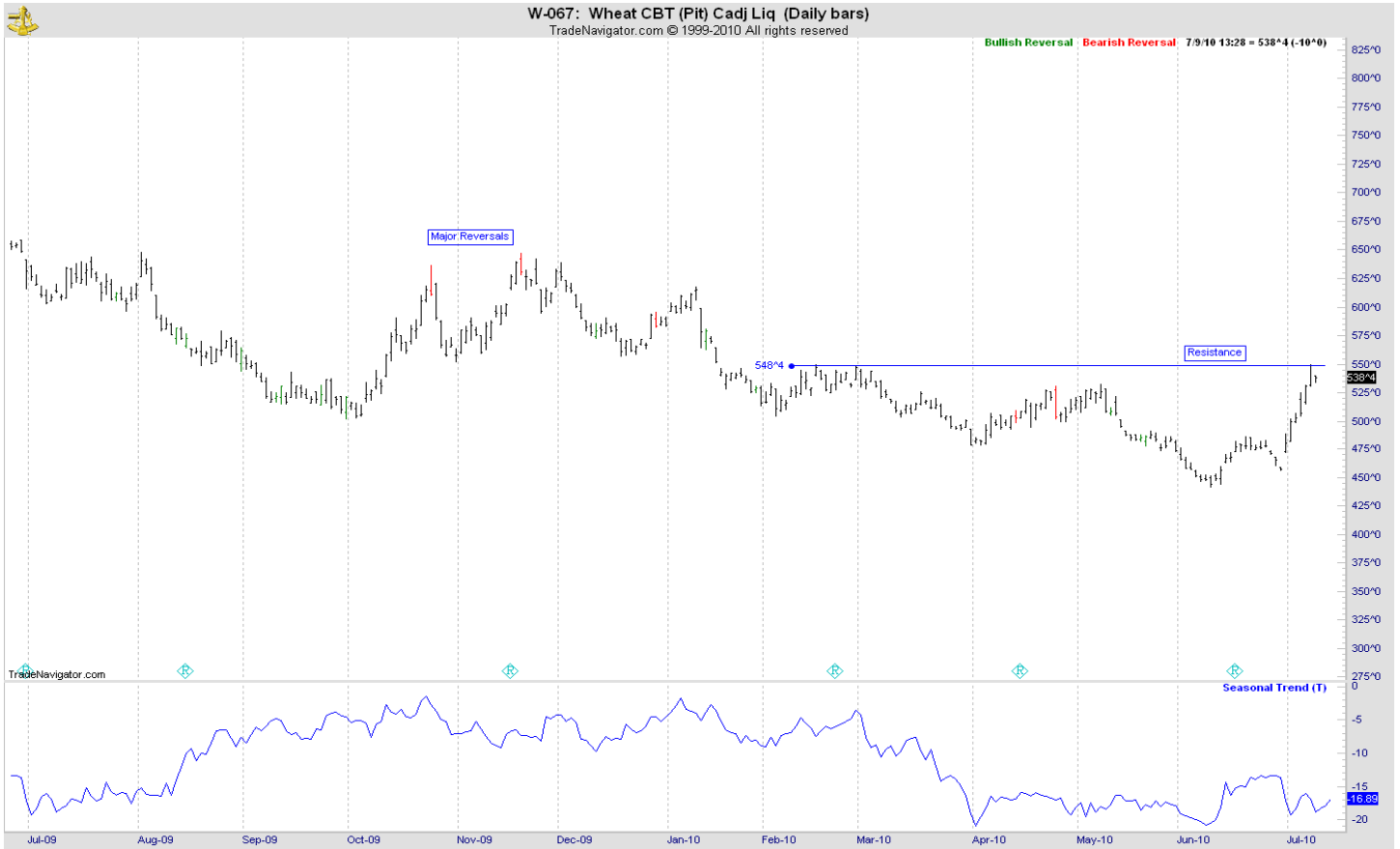
STRATEGY & OUTLOOK

Producers began to scale into 2010 crop sales at \$6.05 off the July 2010 Kansas City contract. July Kansas City wheat for 2011 has rallied over 80 cents since putting in lows earlier this summer. If you followed advice to place harvested wheat under loan and not sell, now is the time to make cash sales. Basis levels are likely to improve during the winter months.

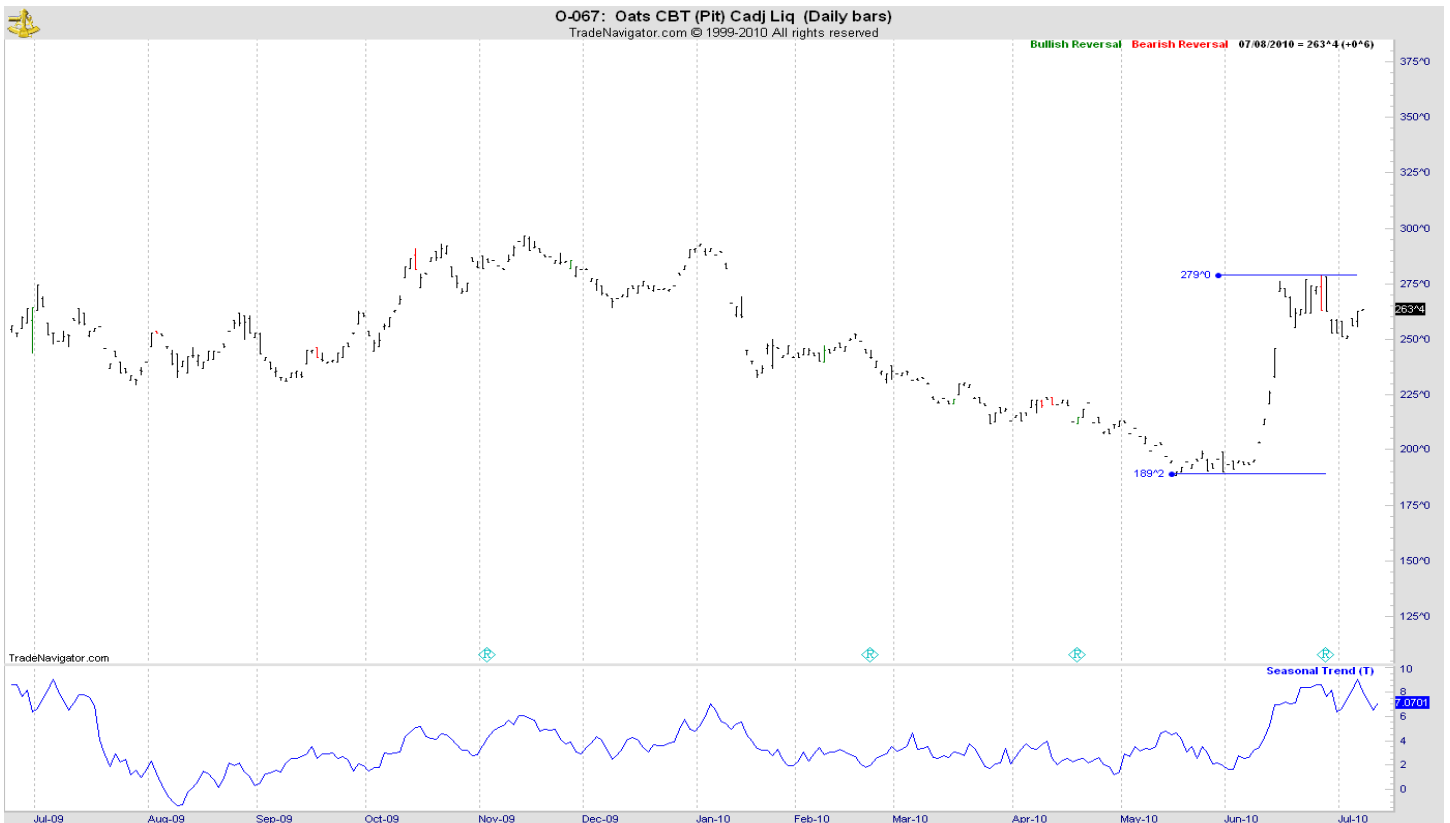
WEEKLY CHICAGO



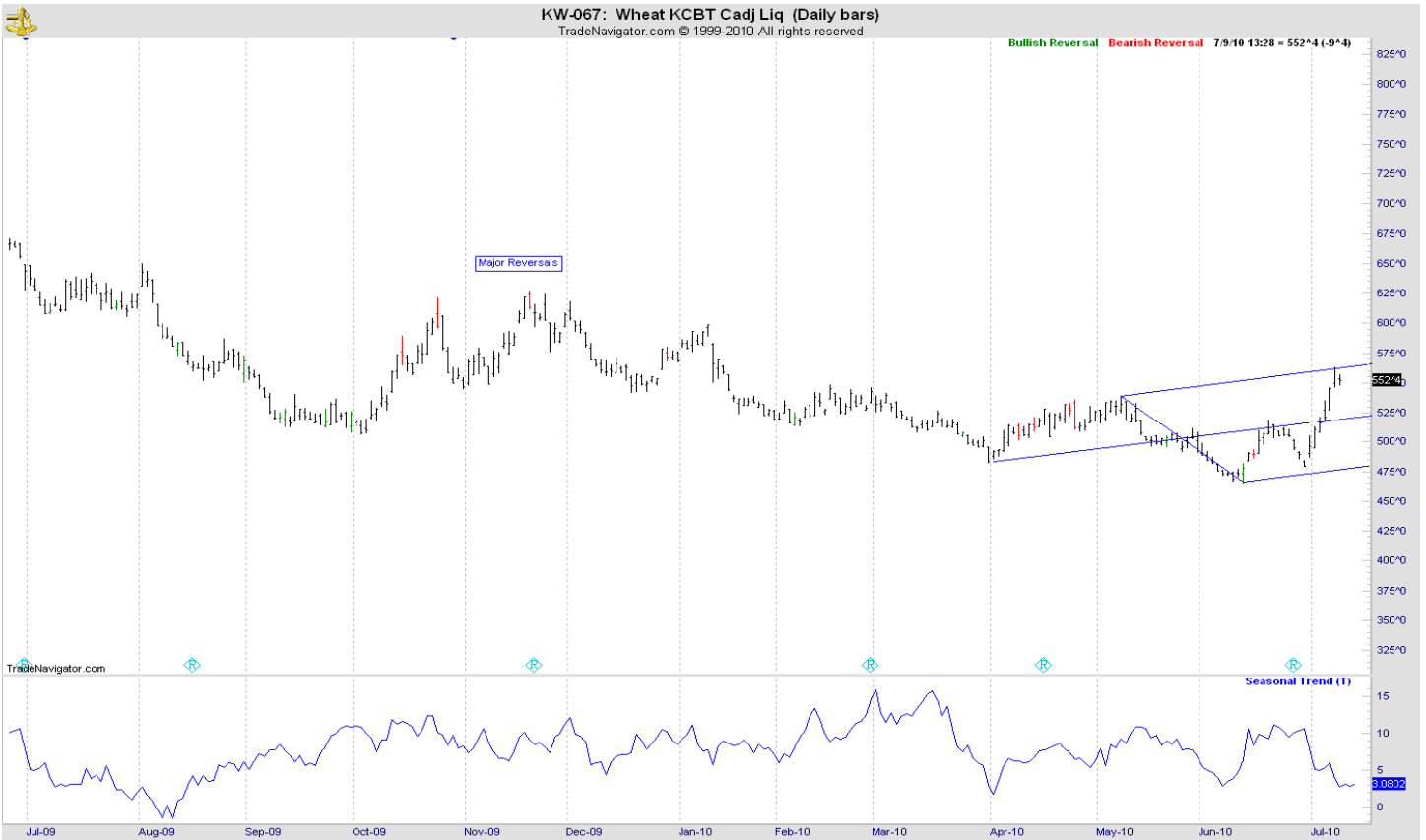
CHICAGO WHEAT



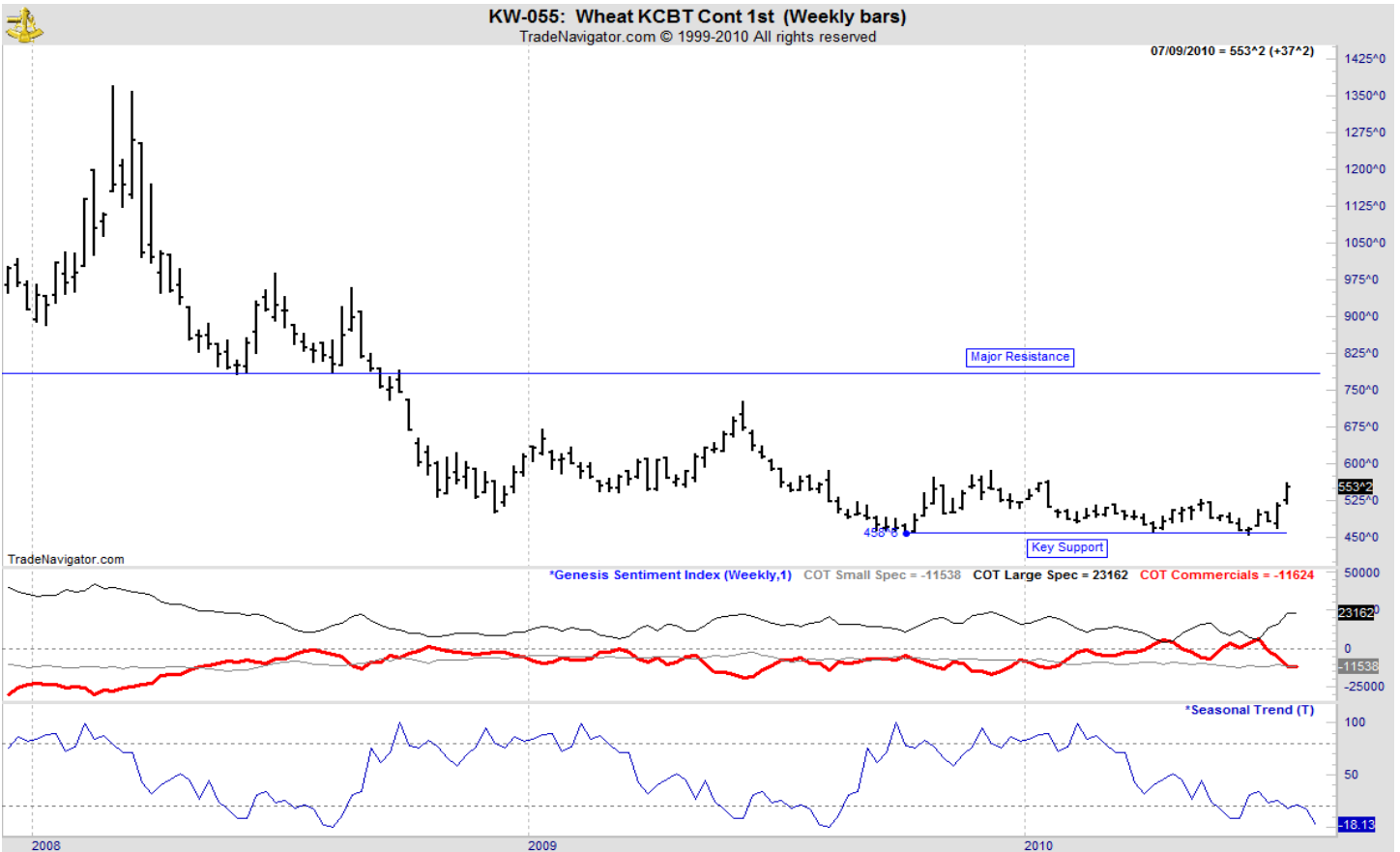
OATS



KANSAS CITY WHEAT



WEEKLY KANSAS CITY



MINNEAPOLIS WHEAT



WEEKLY MINNEAPOLIS

