

MIDWEST MARKET SOLUTIONS, INC.

"THE LEADING EDGE IN COMMODITIES"

327 BROADWAY
YANKTON, SOUTH DAKOTA 57078
866-203-9655
605-260-3063 FAX
WWW.MIDWESTMARKETSOLUTIONS.COM



THE MARKET INSIDER NEWSLETTER

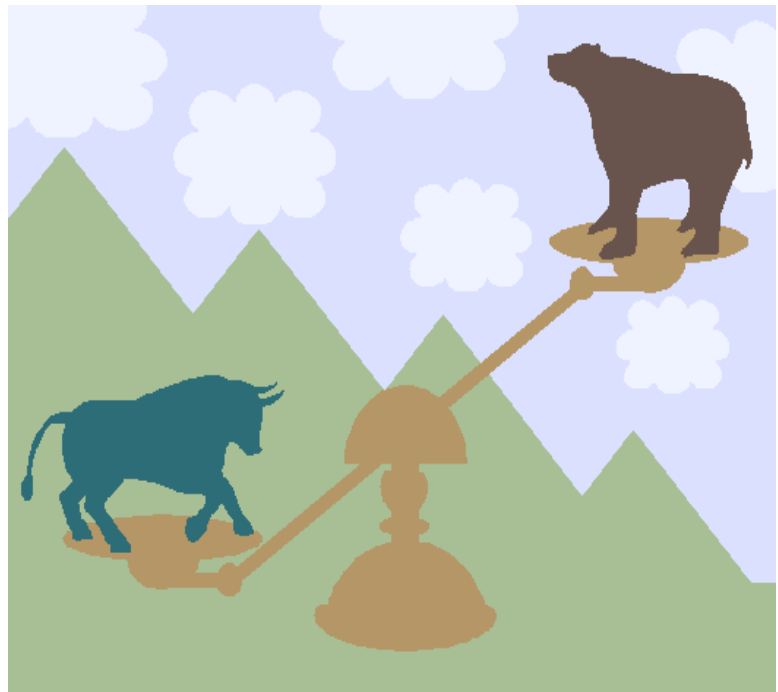
July 26, 2010

By: Brian Hoops, President
Midwest Market Solutions, Inc.

VISIT OUR WEBSITE AT www.midwestmarketsolutions.com FOR MORE INFORMATION.

Inside This Issue:

| | |
|---|------|
| THE JULY CATTLE ON FEED AND COLD STORAGE REPORT | 2 |
| CORN OUTLOOK | 3,4 |
| SOYBEAN OUTLOOK | 5-7 |
| WHEAT OUTLOOK | 8-11 |
| LIVE CATTLE OUTLOOK | 12 |
| FEEDER CATTLE OUTLOOK | 13 |
| LEAN HOG OUTLOOK | 14 |
| SPECULATOR'S CORNER | 15 |
| NEWS | 16 |
| WEATHER | 17 |
| CALENDAR OF EVENTS | 18 |
| MARGIN REQUIREMENTS | 19 |
| COMPANY INFO | 20 |
| DISCLAIMER | 20 |



WHEAT



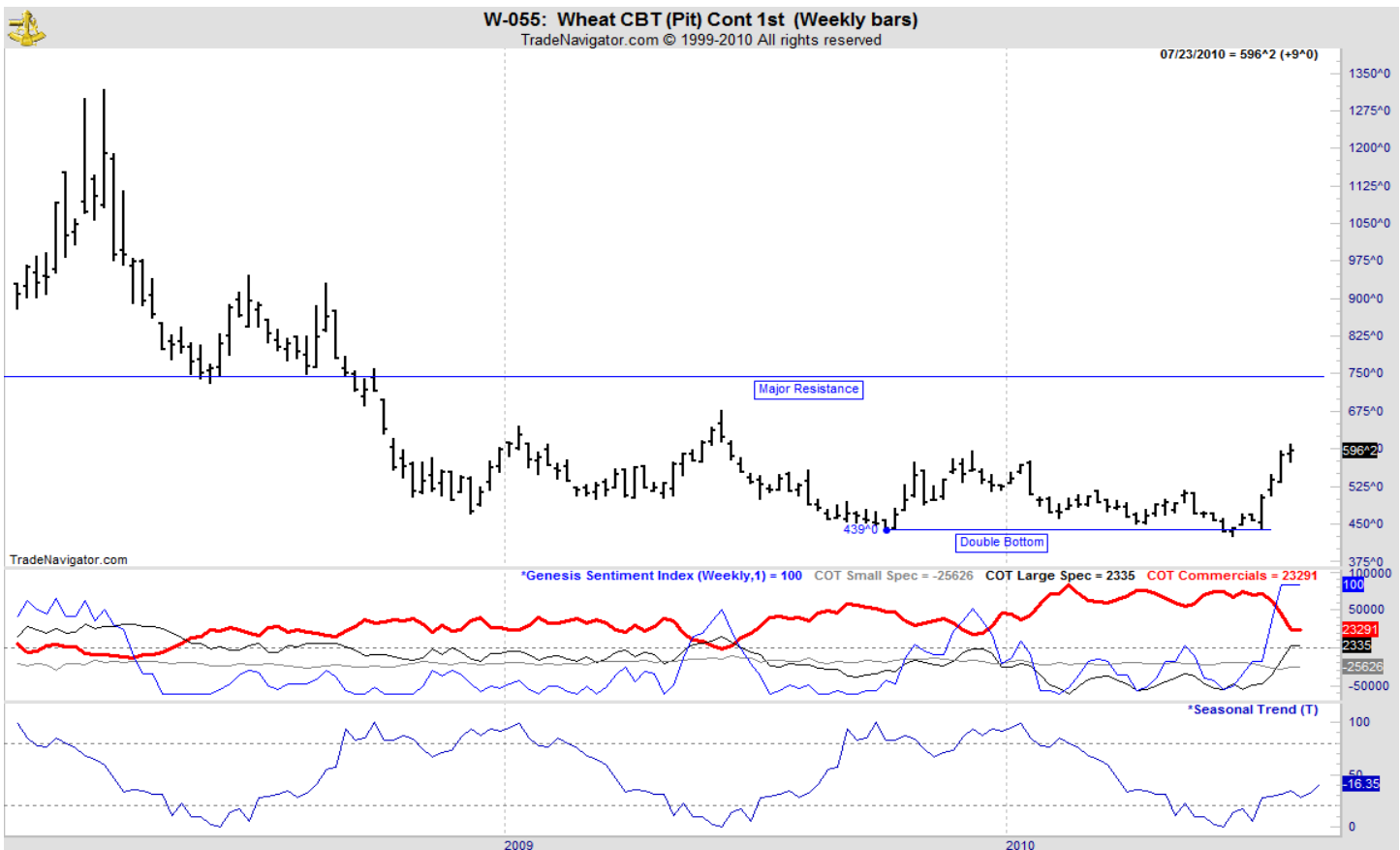
ANALYSIS

For the week, Chicago wheat closed \$.09 higher; Kansas City wheat \$.16 higher and Minneapolis wheat \$.17 higher. Last week, wheat continued its rally on massive fund short-covering as world wide weather concerns has forced the funds out of their comfortable short positions. The latest COT report showed funds are now net long for the first time since June, 2009. This time in history marked a significant high on the weekly charts as prices eventually fell over \$2.50 per bushel. The USDA reported the U.S. spring wheat is rated 82% g/e, down 1% from last week. Only 3% of the crop rate poor to very poor. A year ago, 73% of the crop was rated g/e with 7% rated p/ vp. Biggest spring wheat producing state North Dakota is rated 83% g/e. Harvest is progressing with 71% of the winter wheat harvest completed, in line with the average of 74%. The weekly export sales report showed net sales of 382,100 MT for the 2010/11 marketing year were up 24 percent from the previous week, but down 22 percent from the prior 4-week average. Increases were primarily for Mexico (58,900 MT), Colombia (48,600 MT, including 10,000 MT switched from unknown destinations and 3,000 MT switched from the Dominican Republic). Exports of 544,700 MT were up 53 percent from the previous week and 25 percent from the prior 4-week average. This year's exports stand at 275 mb vs. the USDA forecast of 1.000 bb.

STRATEGY & OUTLOOK

Producers began to scale into 2010 crop sales at \$6.05 off the July 2010 Kansas City contract. July Kansas City wheat for 2011 has rallied over 120 cents since putting in lows earlier this summer. If you followed advice to place harvested wheat under loan and not sell, now is the time to make cash sales. Basis levels are likely to improve during the winter months.

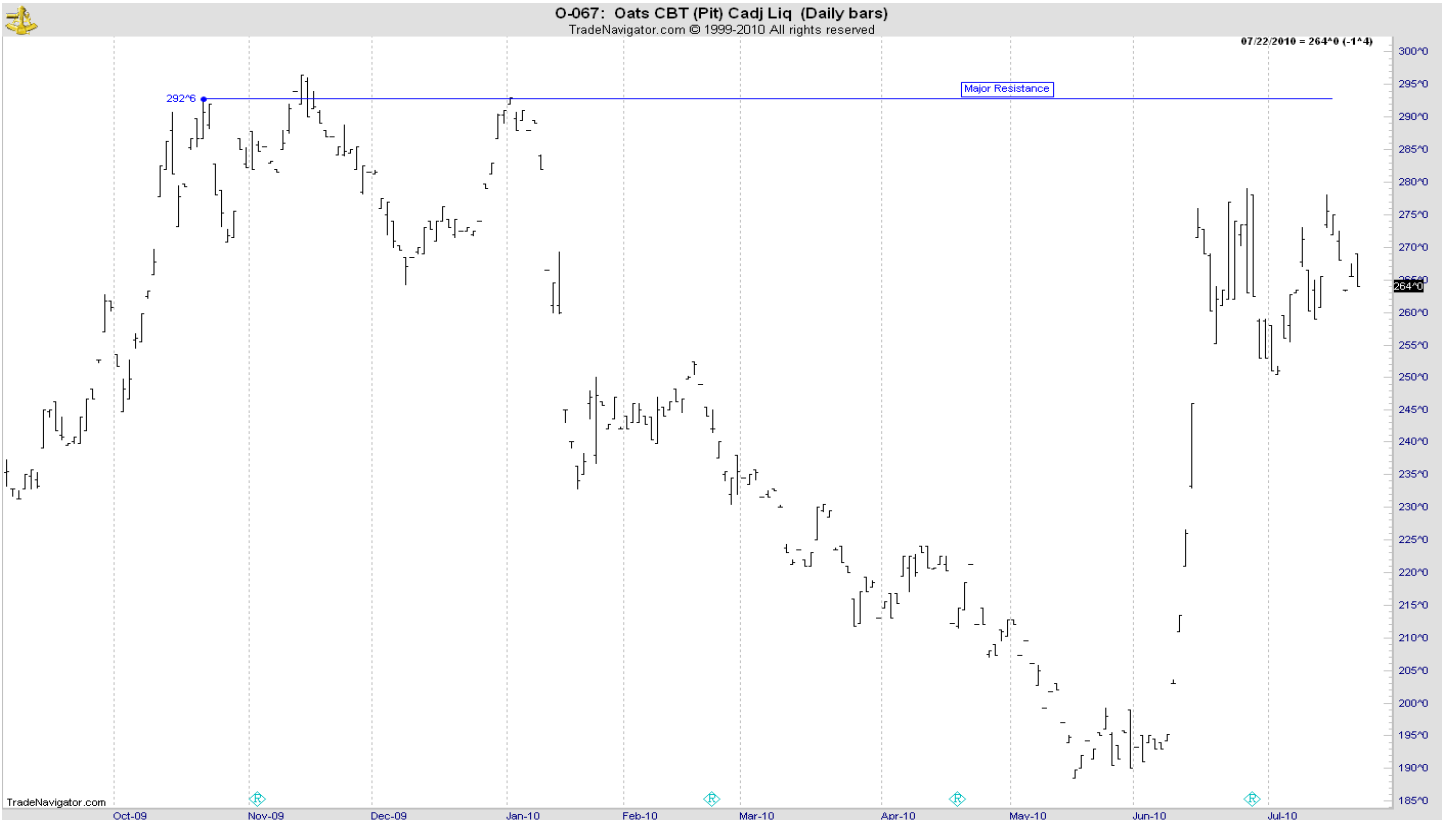
WEEKLY CHICAGO



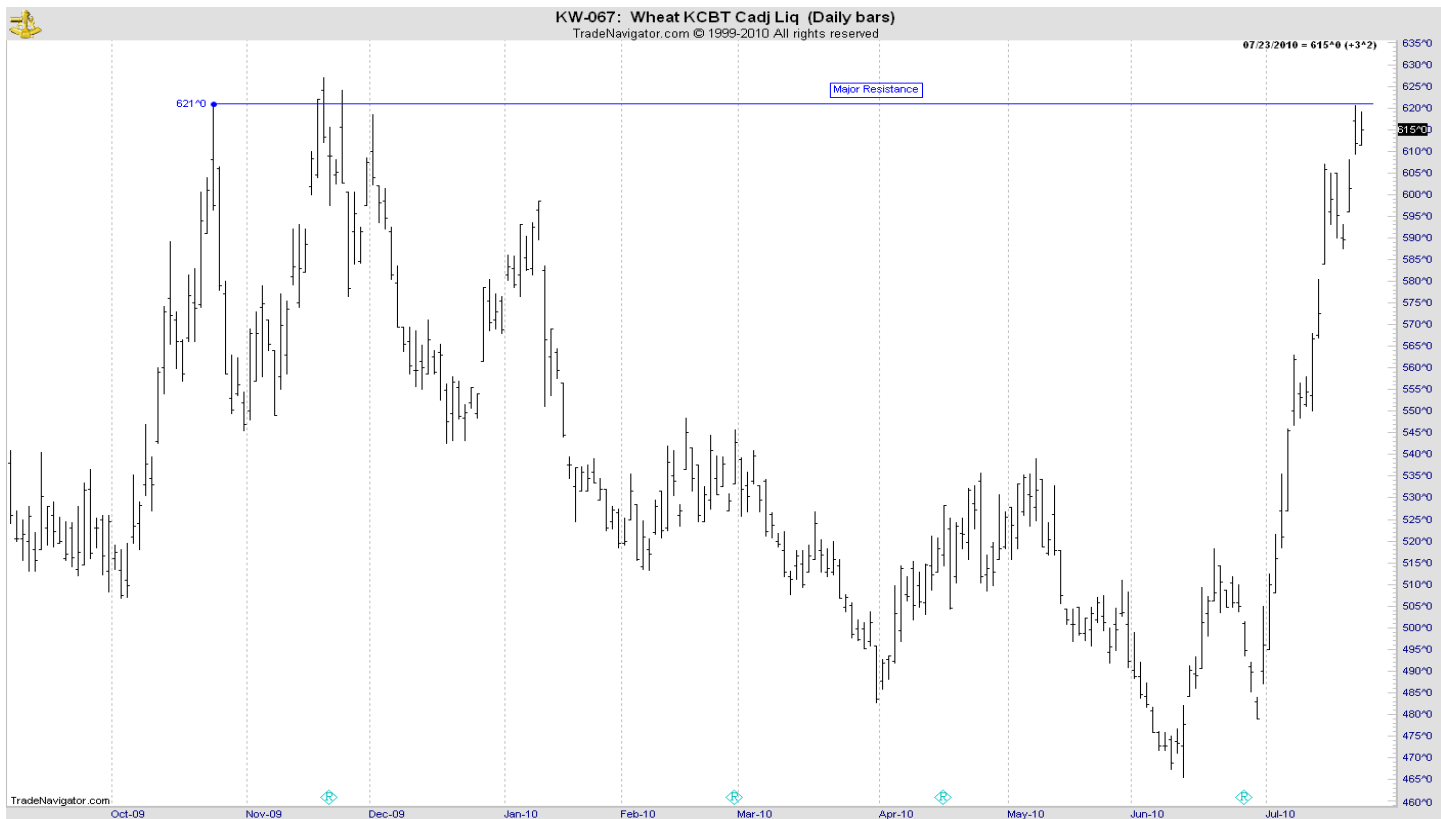
CHICAGO WHEAT



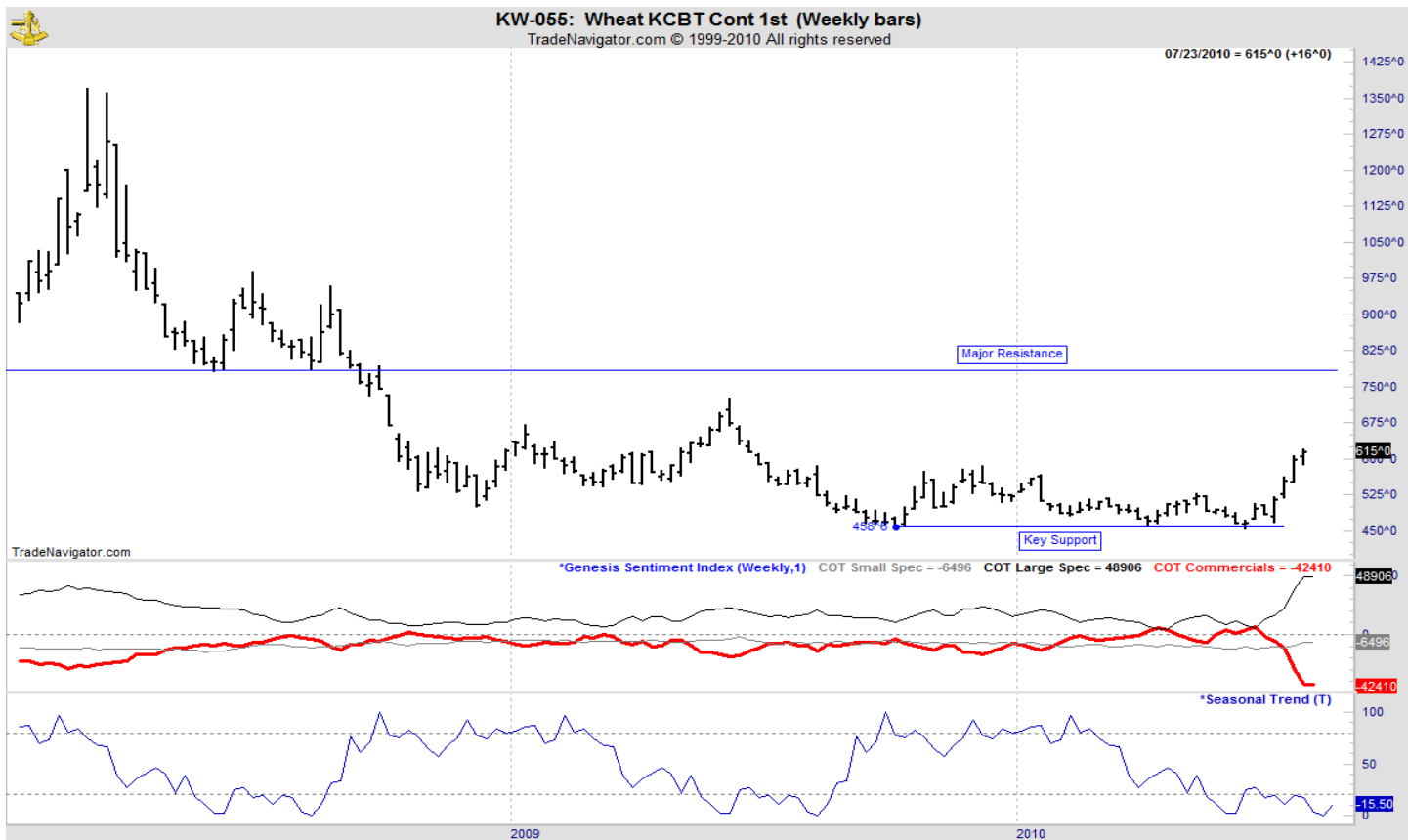
OATS



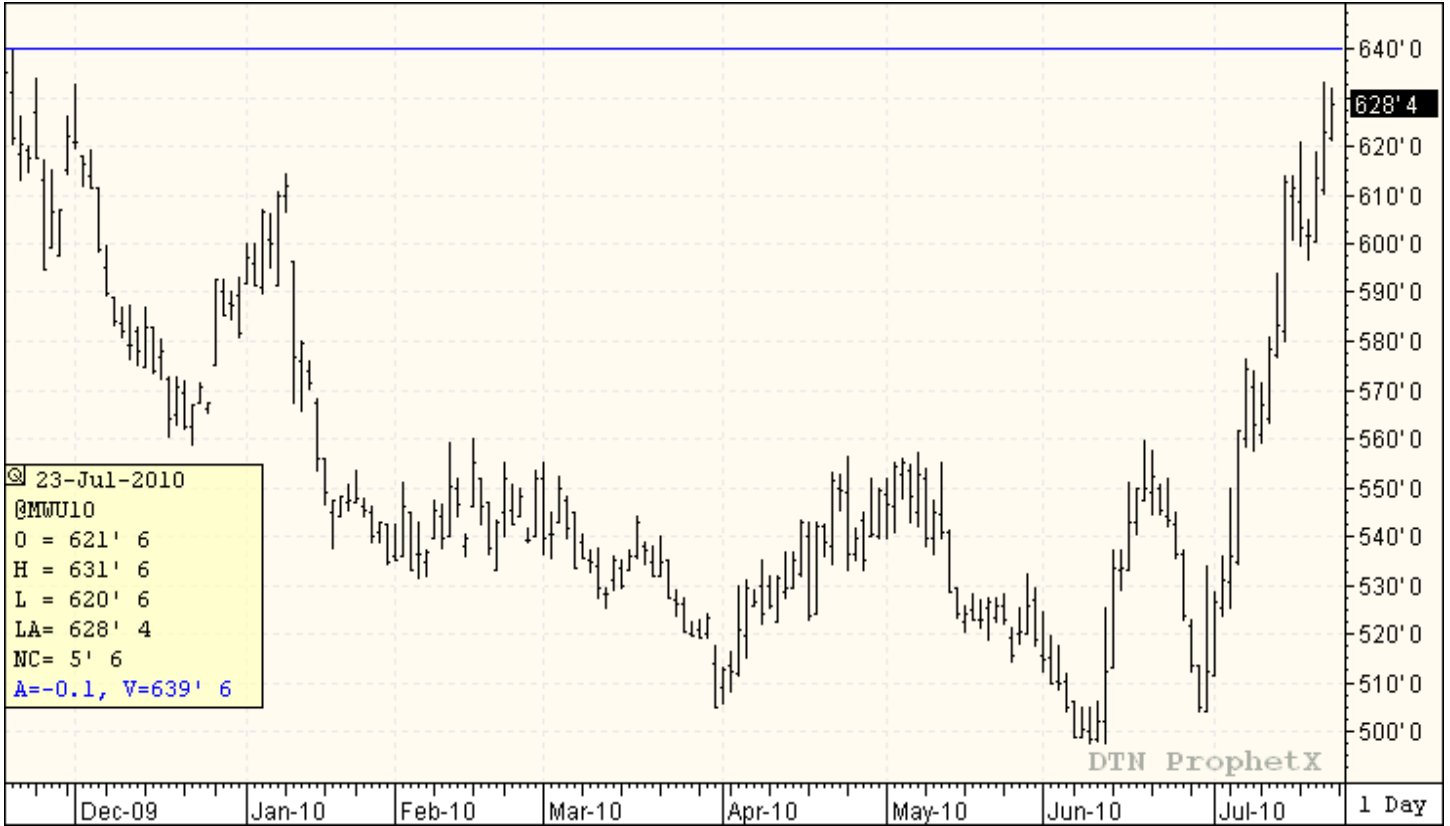
KANSAS CITY WHEAT



WEEKLY KANSAS CITY



MINNEAPOLIS WHEAT



WEEKLY MINNEAPOLIS

