

# MIDWEST MARKET SOLUTIONS, INC

“THE LEADING EDGE IN COMMODITIES”

[www.midwestmarketsolutions.com](http://www.midwestmarketsolutions.com)



Subscribe to our Market Solutions Hedge Program Newsletter. Get a newsletter and text updates with specific hedging recommendations. Contact us for more information or visit [www.midwestmarketsolutions.com](http://www.midwestmarketsolutions.com).



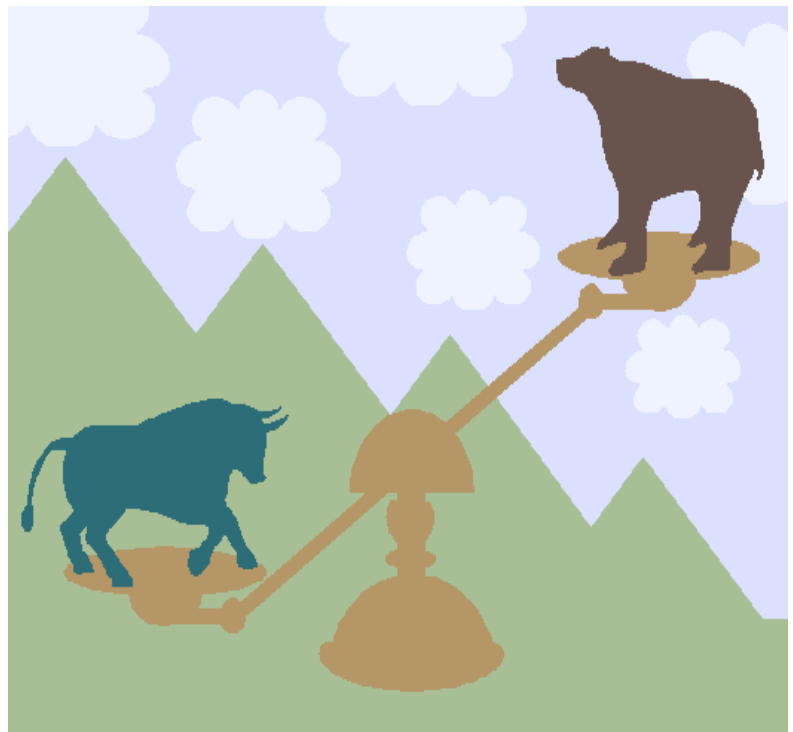
## THE MGEX WEEKLY NEWSLETTER

July 30, 2018

By: Brian Hoops, President  
Midwest Market Solutions, Inc.

VISIT OUR WEBSITE AT  
[www.midwestmarketsolutions.com](http://www.midwestmarketsolutions.com)

FOLLOW US ON TWITTER AT  
[twitter.com/MidwestMarkets](https://twitter.com/MidwestMarkets)



# WHEAT



## ANALYSIS

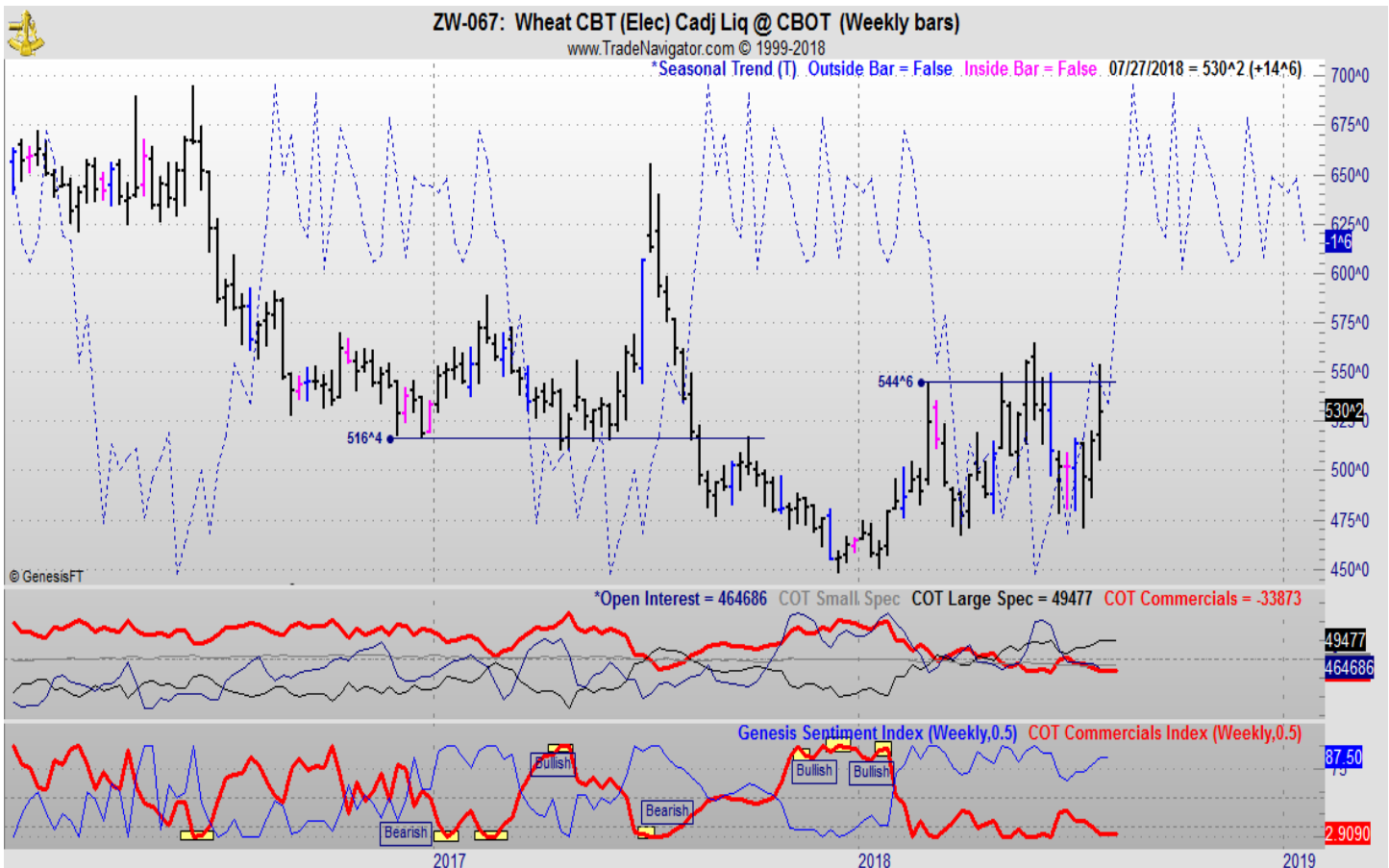
For the week, Chicago wheat closed \$.14 3/4 higher; Kansas City wheat closed \$.24 higher and Minneapolis wheat \$.37 1/2 higher. Last week private exporters did not announce any private sales.

Weekly export sales for all wheat totaled 14.2 mb (385,900 mt), all for the new 2018-19 season. Total shipments plus outstanding sales of 250 mb are 31% less than a year ago. Weekly wheat shipments of 15.0 mb put total shipments down 38% in 2018-19 from the previous year. In the weekly crop progress and conditions report, US spring wheat crop conditions were 79% good/excellent vs 80% expected, 80% last week and 33% last year. US winter wheat harvest advanced to 80% complete vs 83% expected, 74% last week, 83% last year and 79% average. Australian officials pegged their wheat crop near 18.0 mmt because of hot/dry weather conditions. This compares to the latest USDA estimate of 22.0 mmts. During August, the spring wheat harvest will begin in the upper Plains states of Montana, North and South Dakota and Minnesota. Spring wheat harvest should begin to speed up as warm and dry conditions are forecast for the spring wheat states. Once the spring wheat crop is harvested, demand indicators will move to the forefront of pricing in August. If wheat in the Canadian wheat prairies producer a smaller crop, look for U.S. millers to buy Minneapolis spring wheat futures to cover their milling needs.

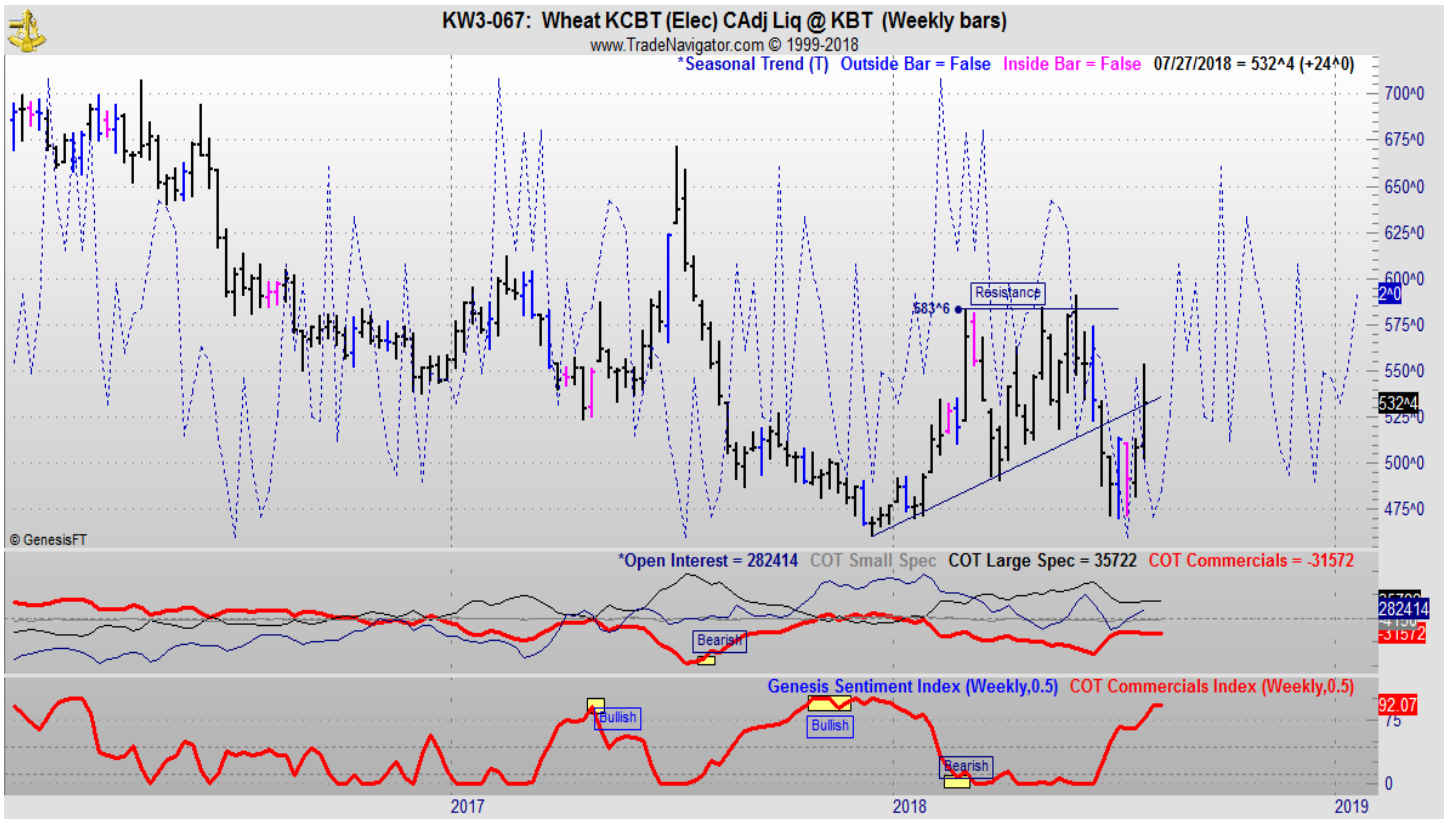
## STRATEGY & OUTLOOK

The huge supplies of wheat mandates supply issues to provide rallies. Look to sell out inventory and use options to manage risks on sharp rally attempts.

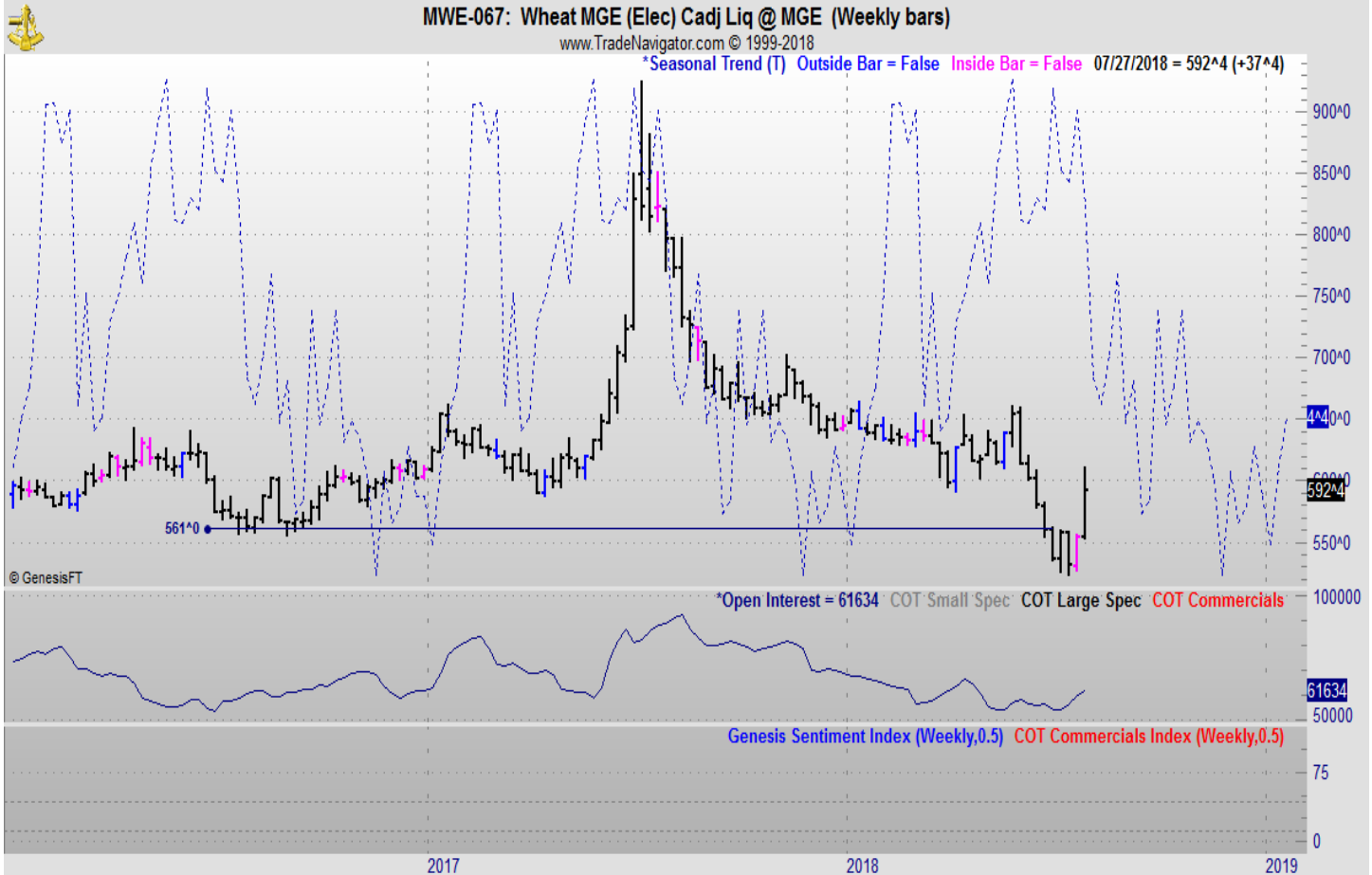
### WEEKLY CHICAGO



## WEEKLY KANSAS CITY



## WEEKLY MINNEAPOLIS



## **COMPANY INFORMATION**

Midwest Market Solutions is the leading edge in commodity marketing and trading. Midwest Market Solutions was established in March of 2002 and is a full-service commodity brokerage and marketing advisory service, clearing through R.J. O'Brien. The firm specializes in individual trading strategies for the investor, personalized marketing programs for individual farm operations as well as full-service and discount broker services. The home office is located in Springfield, Missouri with branch offices in Yankton, South Dakota; Storm Lake, Iowa; Pocahontas, Iowa; Thief River Falls, Minnesota; Roseau, Minnesota; Omaha, Nebraska; Verona, North Dakota; Ennis, Montana and Watseka, Illinois. Midwest Market Solutions is committed to providing clients with the best information and service as possible. Midwest Market Solutions provides clients with written newsletters, trade research and hedging as well as trading advice.

Brian Hoops is President and Senior Market Analyst of Midwest Market Solutions, Inc. Brian can frequently be heard on radio stations across the country including KAYL, KKIA, Ag News 890, Red River Farm Network, Your Ag Network, WHO Big Show and Commodity Wrap on Sirius XM radio. Brian can also be seen as a frequent guest on RFD-TV and heard on the Minneapolis Grain Exchange marketing hotline. Brian also writes several newsletters that are published throughout the Plains and the Midwest, covering the states of Iowa, Minnesota, North and South Dakota, Nebraska, Kansas, Montana, Wisconsin, Wyoming and Idaho. Brian has been quoted in the Wall Street Journal, Bloomberg, Reuters and Dow Jones newswires and U.S. Farm Report.

### **Services available at Midwest Market Solutions:**

- |                                 |                                      |                         |
|---------------------------------|--------------------------------------|-------------------------|
| *Full Service Brokerage         | *Market Quotes and Trading Platforms | *Twitter Feed           |
| *Discount Brokerage Service     | *Market Solutions Hedge Program      | *Text Marketing Service |
| *Market Insider TV Commentaries | *Market Insider Daily Newsletter     |                         |

Midwest Market Solutions does not necessarily take every trade recommendation listed herein. Hypothetical performance results have many inherent limitations, some of which are described below. No representation is being made that any account will or is likely to achieve profits or losses similar to those shown in fact there are frequently sharp differences between hypothetical performance results and the actual results subsequently achieved by any particular trading program. One of the limitations of hypothetical performance results is that they are generally prepared with the benefit of hindsight. In addition, hypothetical trading does not involve financial risk and no hypothetical trading record can completely account for the impact of financial risk in actual trading. For example, the ability to withstand losses or adhere to a particular trading program in spite of trading losses is material points which can also adversely affect actual trading results. There are numerous other factors related to the markets in general or to the implementation of any specific trading program, which cannot be fully accounted for in the preparation of hypothetical performance, results and all of which can adversely affect actual trading results.

This material has been prepared by a sales or trading employee or agent of Midwest Market Solutions and is, or is in the nature of, a solicitation. This material is not a research report prepared by Midwest Market Solutions's Research Department. By accepting this communication, you agree that you are an experienced user of the futures markets, capable of making independent trading decisions, and agree that you are not, and will not, rely solely on this communication in making trading decisions.

DISTRIBUTION IN SOME JURISDICTIONS MAY BE PROHIBITED OR RESTRICTED BY LAW. PERSONS IN POSSESSION OF THIS COMMUNICATION INDIRECTLY SHOULD INFORM THEMSELVES ABOUT AND OBSERVE ANY SUCH PROHIBITION OR RESTRICTIONS. TO THE EXTENT THAT YOU HAVE RECEIVED THIS COMMUNICATION INDIRECTLY AND SOLICITATIONS ARE PROHIBITED IN YOUR JURISDICTION WITHOUT REGISTRATION, THE MARKET COMMENTARY IN THIS COMMUNICATION SHOULD NOT BE CONSIDERED A SOLICITATION.

The risk of loss in trading futures and/or options is substantial and each investor and/or trader must consider whether this is a suitable investment. Past performance, whether actual or indicated by simulated historical tests of strategies, is not indicative of future results. Trading advice is based on information taken from trades and statistical services and other sources that Midwest Market Solutions believes are reliable. We do not guarantee that such information is accurate or complete and it should not be relied upon as such. Trading advice reflects our good faith judgment at a specific time and is subject to change without notice. There is no guarantee that the advice we give will result in profitable trades.