

MIDWEST MARKET SOLUTIONS, INC.

"THE LEADING EDGE IN COMMODITIES"

327 BROADWAY
YANKTON, SOUTH DAKOTA 57078
866-203-9655
605-260-3063 FAX
WWW.MIDWESTMARKETSOLUTIONS.COM



THE MARKET INSIDER NEWSLETTER

August 2, 2010

By: Brian Hoops, President
Midwest Market Solutions, Inc.

VISIT OUR WEBSITE AT www.midwestmarketsolutions.com FOR MORE INFORMATION.

Inside This Issue:

WHAT TO EXPECT IN AUGUST	2
CORN OUTLOOK	3,4
SOYBEAN OUTLOOK	5-7
WHEAT OUTLOOK	8-11
LIVE CATTLE OUTLOOK	12
FEEDER CATTLE OUTLOOK	13
LEAN HOG OUTLOOK	14
SPECULATOR'S CORNER	15
NEWS	16
WEATHER	17
CALENDAR OF EVENTS	18
MARGIN REQUIREMENTS	19
COMPANY INFO	20
DISCLAIMER	20



WHEAT



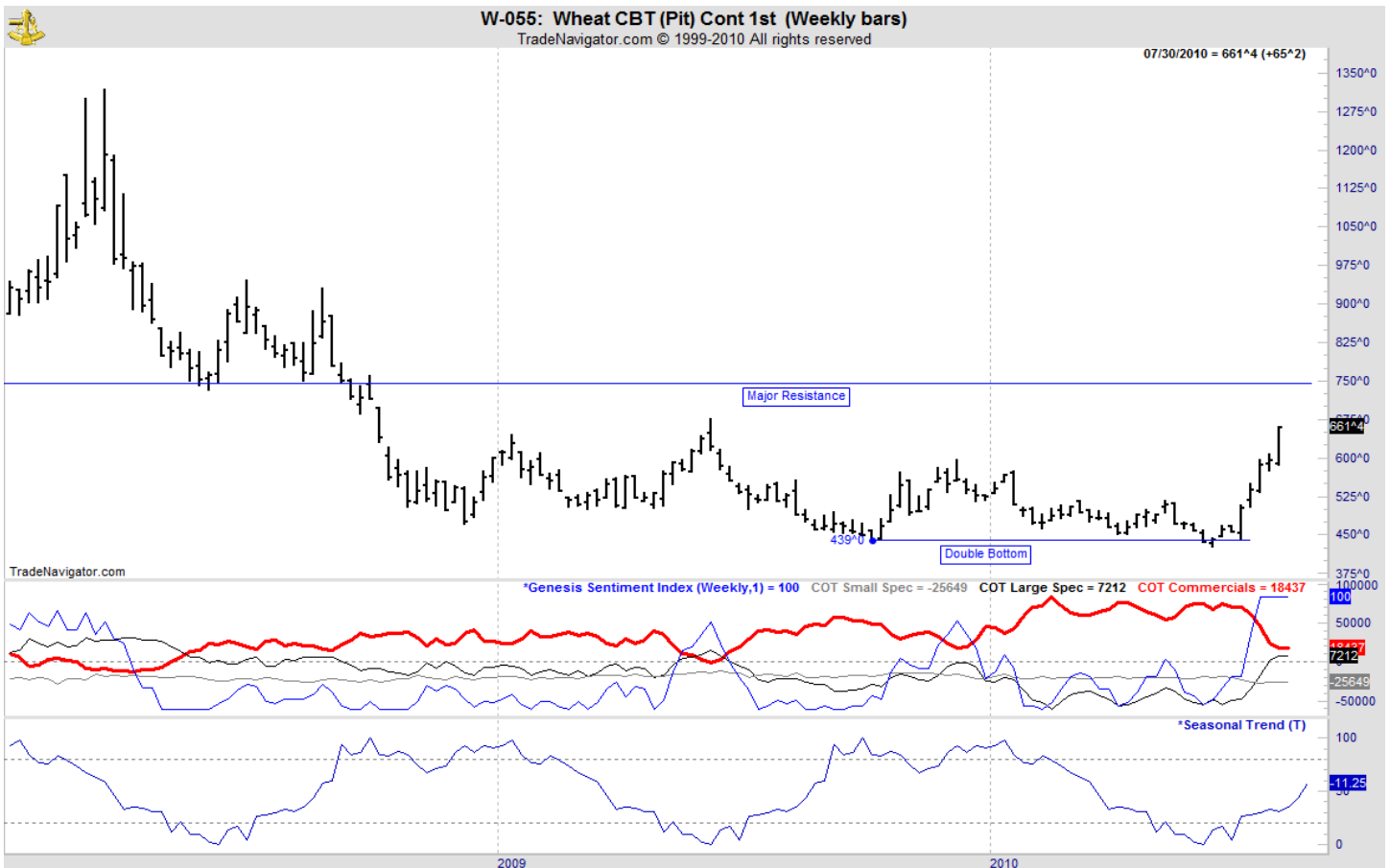
ANALYSIS

For the week, Chicago wheat closed \$.65 1/4 higher; Kansas City wheat \$.59 1/2 higher and Minneapolis wheat \$.59 1/4 higher. Last week, wheat continued its rally on massive fund short-covering as world wide weather concerns has forced the funds out of their comfortable short positions. The latest COT report showed funds are now net long for the first time since June, 2009. The last time this happened marked a significant high on the weekly charts as prices eventually fell over \$2.50 per bushel. The USDA reported the U.S. spring wheat is rated 83% g/e, up 1% from last week. Only 3% of the crop rate poor to very poor. A year ago, 74% of the crop was rated g/e with 7% rated p/ vp. The largest spring wheat producing state of North Dakota is rated 84% g/e. Harvest is progressing with 79% of the winter wheat harvest completed, in line with the average of 82%. The weekly export sales report showed net sales of 919,900 MT for the 2010/11 marketing year were up noticeably from the previous week and from the prior 4-week average. Increases were primarily for Japan (161,600 MT), Nigeria (122,000 MT, including 25,000 MT switched from unknown destinations), the Philippines (105,700 MT), Egypt (95,200 MT), Canada (55,000 MT), and Peru (53,800 MT) .This year's exports stand at 309 mb vs. the USDA forecast of 1.000 bb.

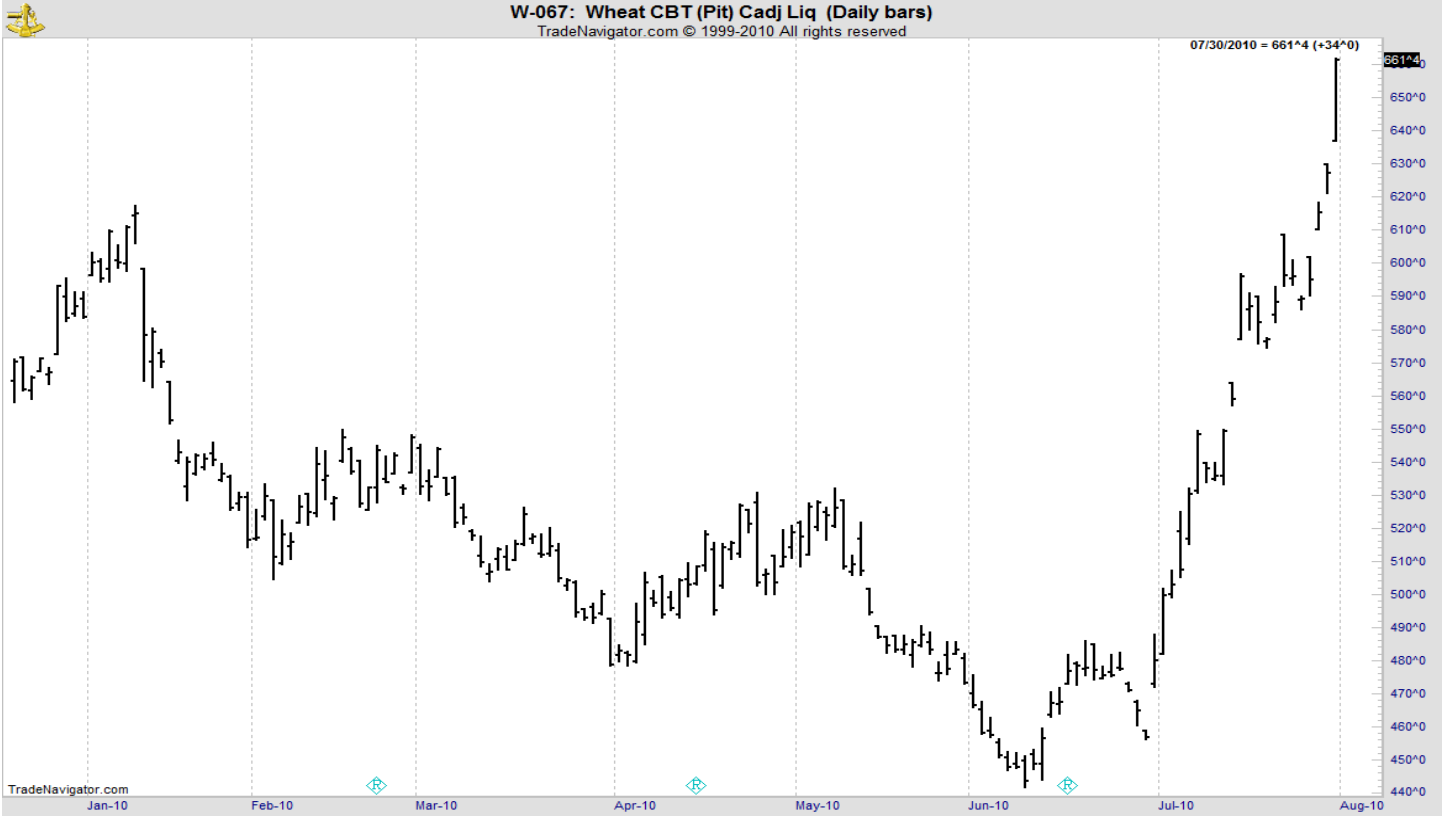
STRATEGY & OUTLOOK

Producers began to scale into 2010 crop sales at \$6.05 off the July 2010 Kansas City contract. July Kansas City wheat for 2011 has rallied over 120 cents since putting in lows earlier this summer. If you followed advice to place harvested wheat under loan and not sell, now is the time to make cash sales. Basis levels are likely to improve during the winter months.

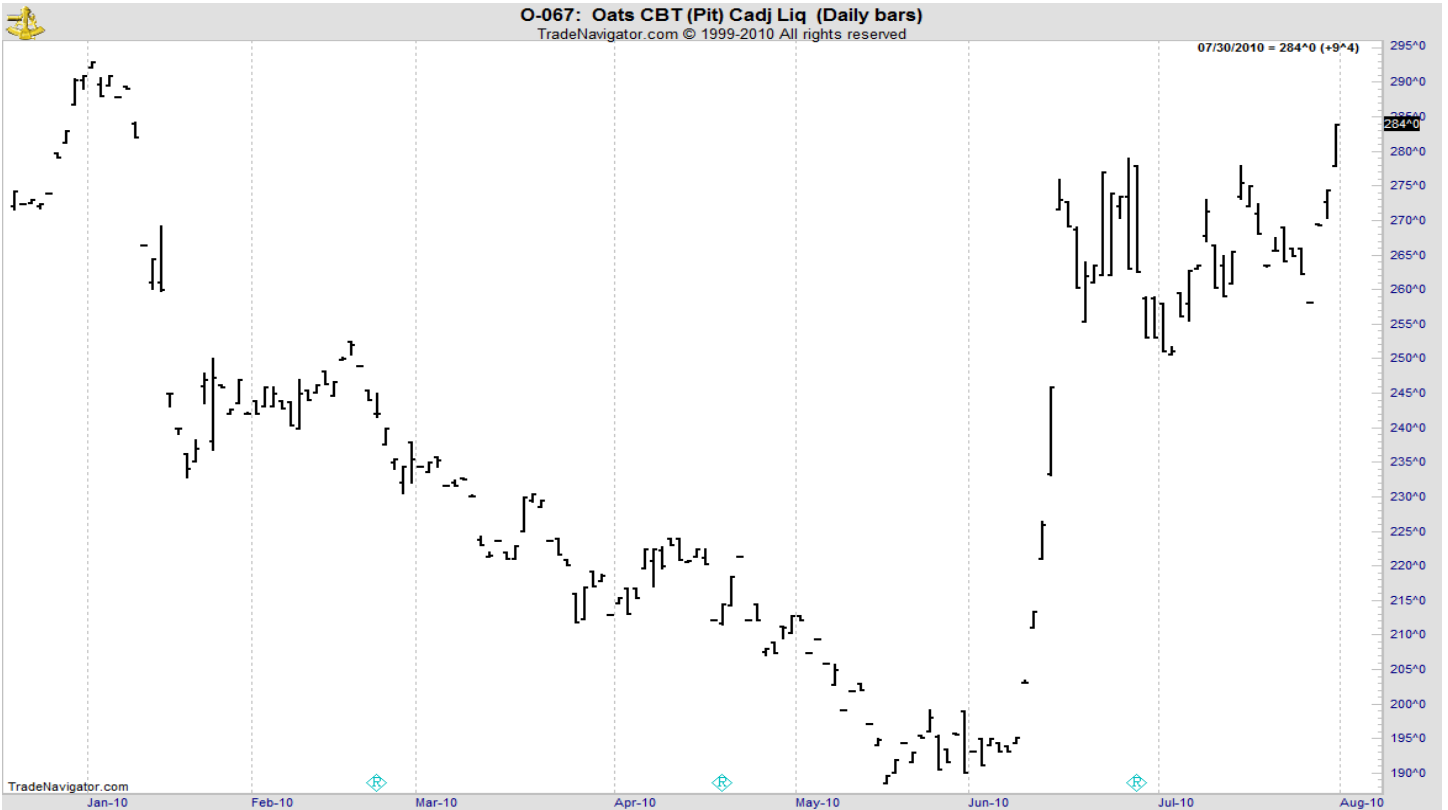
WEEKLY CHICAGO



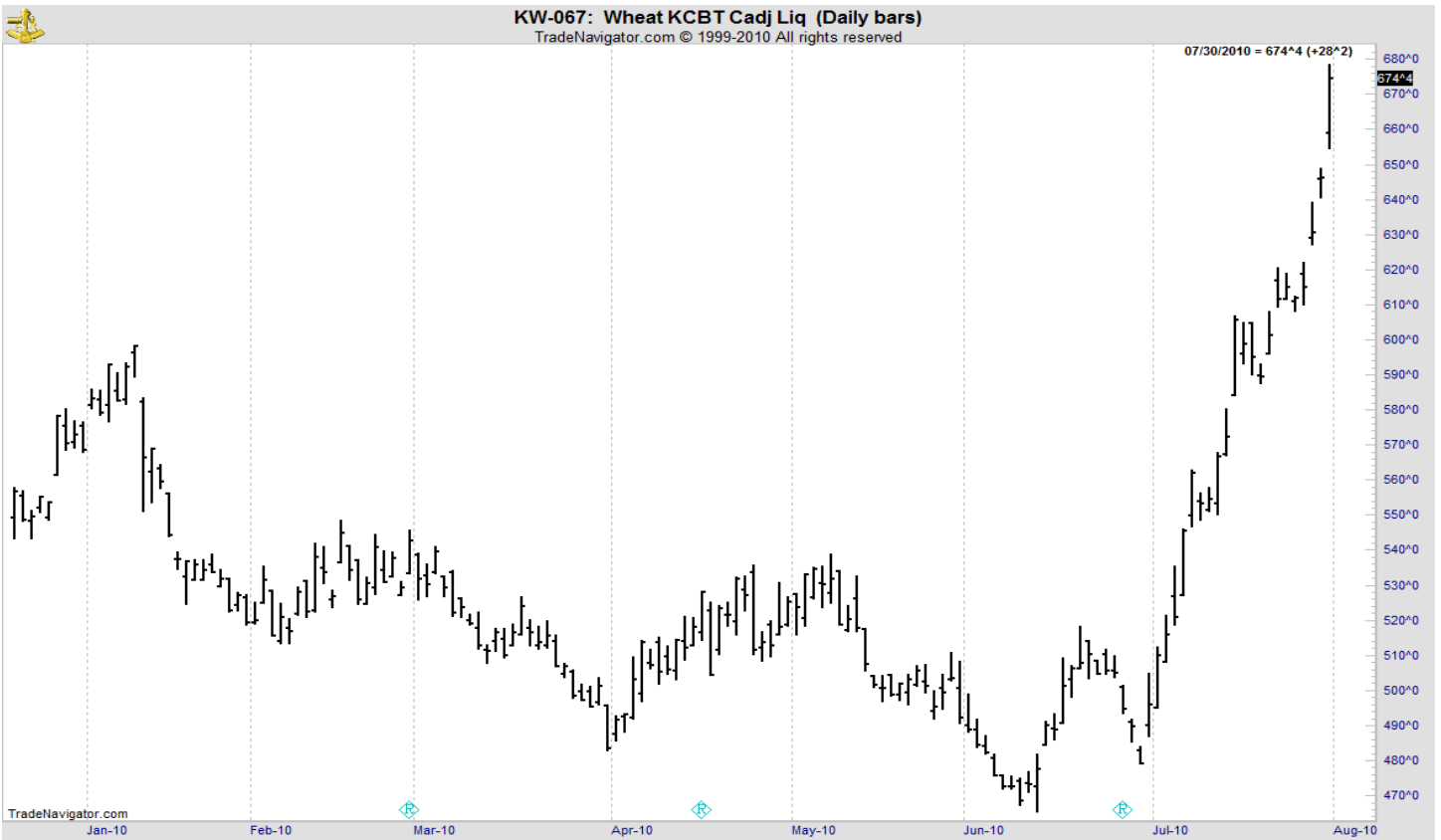
CHICAGO WHEAT



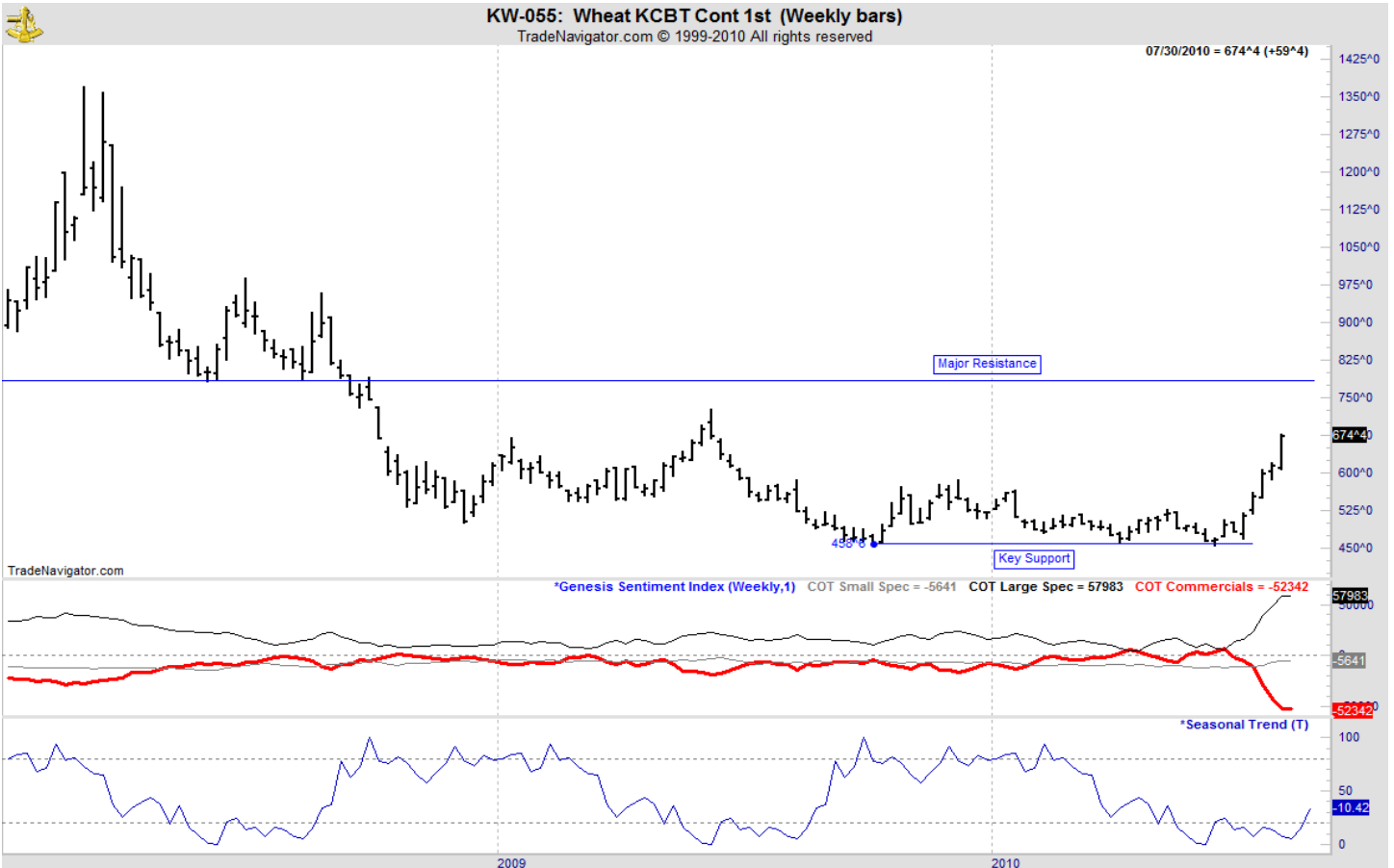
OATS



KANSAS CITY WHEAT



WEEKLY KANSAS CITY



MINNEAPOLIS WHEAT



WEEKLY MINNEAPOLIS

