

MIDWEST MARKET SOLUTIONS, INC.

"THE LEADING EDGE IN COMMODITIES"

327 BROADWAY
YANKTON, SOUTH DAKOTA 57078
866-203-9655
605-260-3063 FAX
WWW.MIDWESTMARKETSOLUTIONS.COM



THE MARKET INSIDER NEWSLETTER

August 16, 2010

By: Brian Hoops, President
Midwest Market Solutions, Inc.

VISIT OUR WEBSITE AT www.midwestmarketsolutions.com FOR MORE INFORMATION.

Inside This Issue:

THE AUGUST SUPPLY/DEMAND REPORT	2
CORN OUTLOOK	3,4
SOYBEAN OUTLOOK	5-7
WHEAT OUTLOOK	8-11
LIVE CATTLE OUTLOOK	12
FEEDER CATTLE OUTLOOK	13
LEAN HOG OUTLOOK	14
SPECULATOR'S CORNER	15
NEWS	16
WEATHER	17
CALENDAR OF EVENTS	18
MARGIN REQUIREMENTS	19
COMPANY INFO	20
DISCLAIMER	20



WHEAT



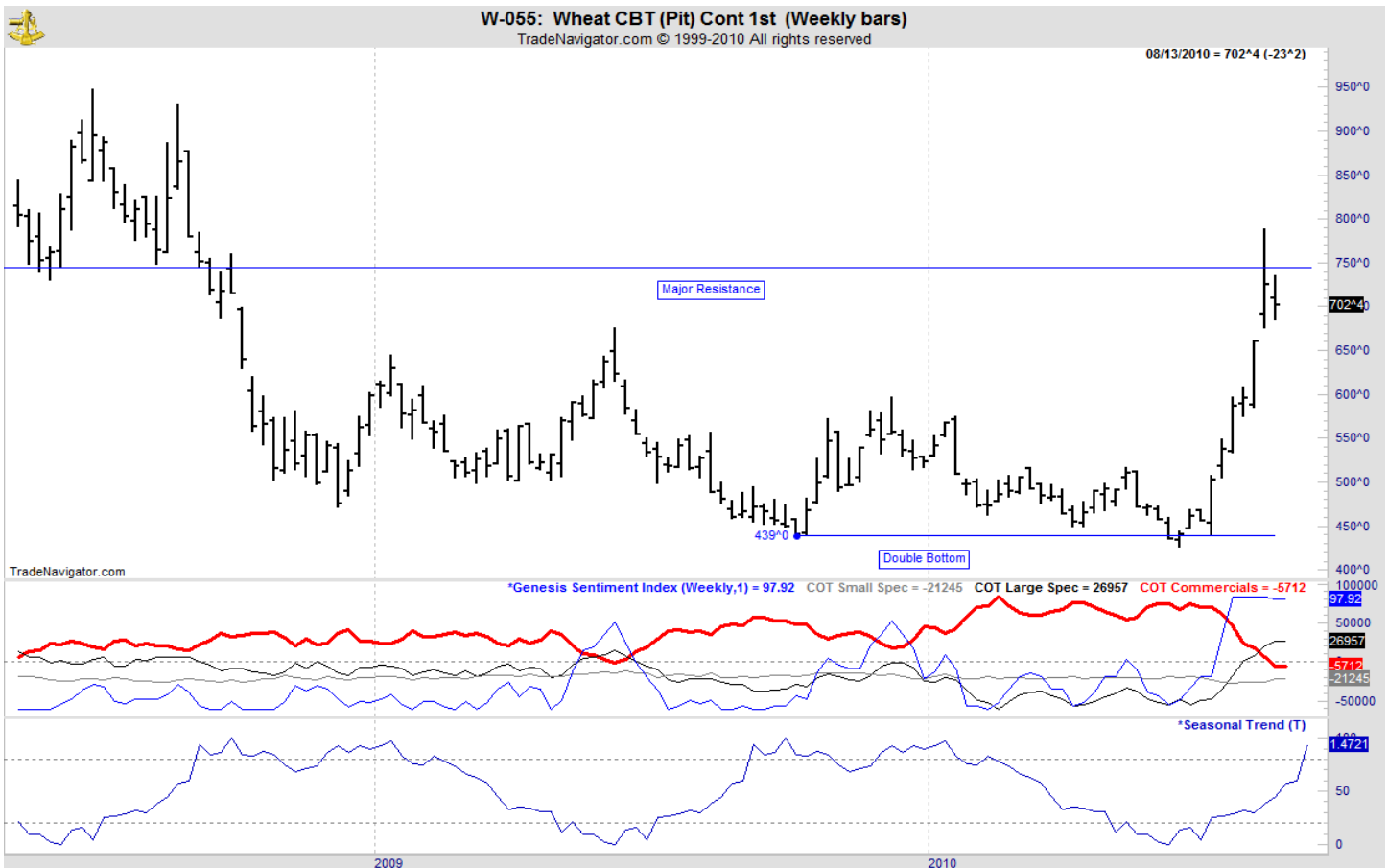
ANALYSIS

For the week, Chicago wheat closed \$.23 1/4 lower; Kansas City wheat \$.03 1/2 higher and Minneapolis wheat \$.08 1/4 lower. Last week, Egypt purchased 360,000 mts from France, but also 340,000 mts of wheat from the United States. Canada also purchased 275,000 mts of U.S. HRS wheat. The USDA reported the U.S. spring wheat is rated 82% g/e, unchanged from last week. Only 3% of the crop rate poor to very poor. A year ago, 72% of the crop was rated g/e with 7% rated p/ vp. The largest spring wheat producing state of North Dakota is rated 84% g/e. Winter wheat harvest is 87% completed, in line with the average of 93%. The weekly export sales report showed net sales of 1,329,700 MT for the 2010/11 marketing year were up 58 percent from the previous week and up noticeably from the prior 4-week average. Increases were primarily for unknown destinations (414,000 MT), Egypt (190,000 MT), Japan (166,600 MT), Yemen (92,000 MT), Nigeria (85,300 MT), the Philippines (52,200 MT), and Italy (50,500 MT). Decreases were reported for Guatemala (2,500 MT) and Brazil (1,500 MT). Net sales of 20,500 MT for delivery in 2011/12 were for Mexico (18,000 MT) and Guatemala (2,500 MT). This year's exports stand at 388 mb vs. the USDA forecast of 1.200 bb. This rally was done on massive volume and considering the technical resistance levels were hit, this certainly looks like a potential, long term high.

STRATEGY & OUTLOOK

Producers should be using this rally as an opportunity to continue to make hedges/sales using deferred contracts like March or May 2011. Basis levels are currently wide, but will likely to improve during the winter months allowing this strategy to reward producers. Producers should also look to use this rally to make sales for the 2011/12 marketing year as price levels are becoming profitable again.

WEEKLY CHICAGO



CHICAGO WHEAT



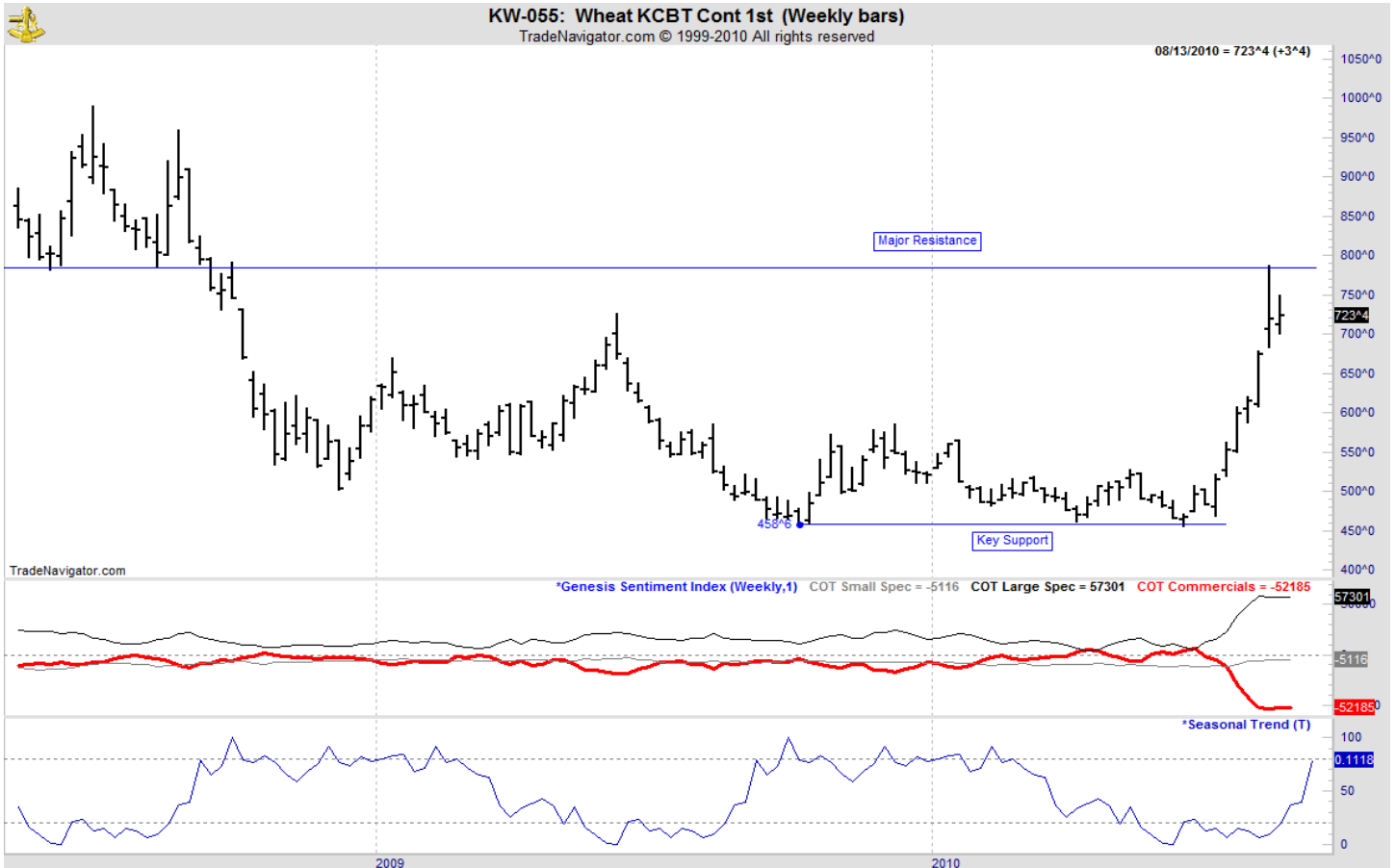
OATS



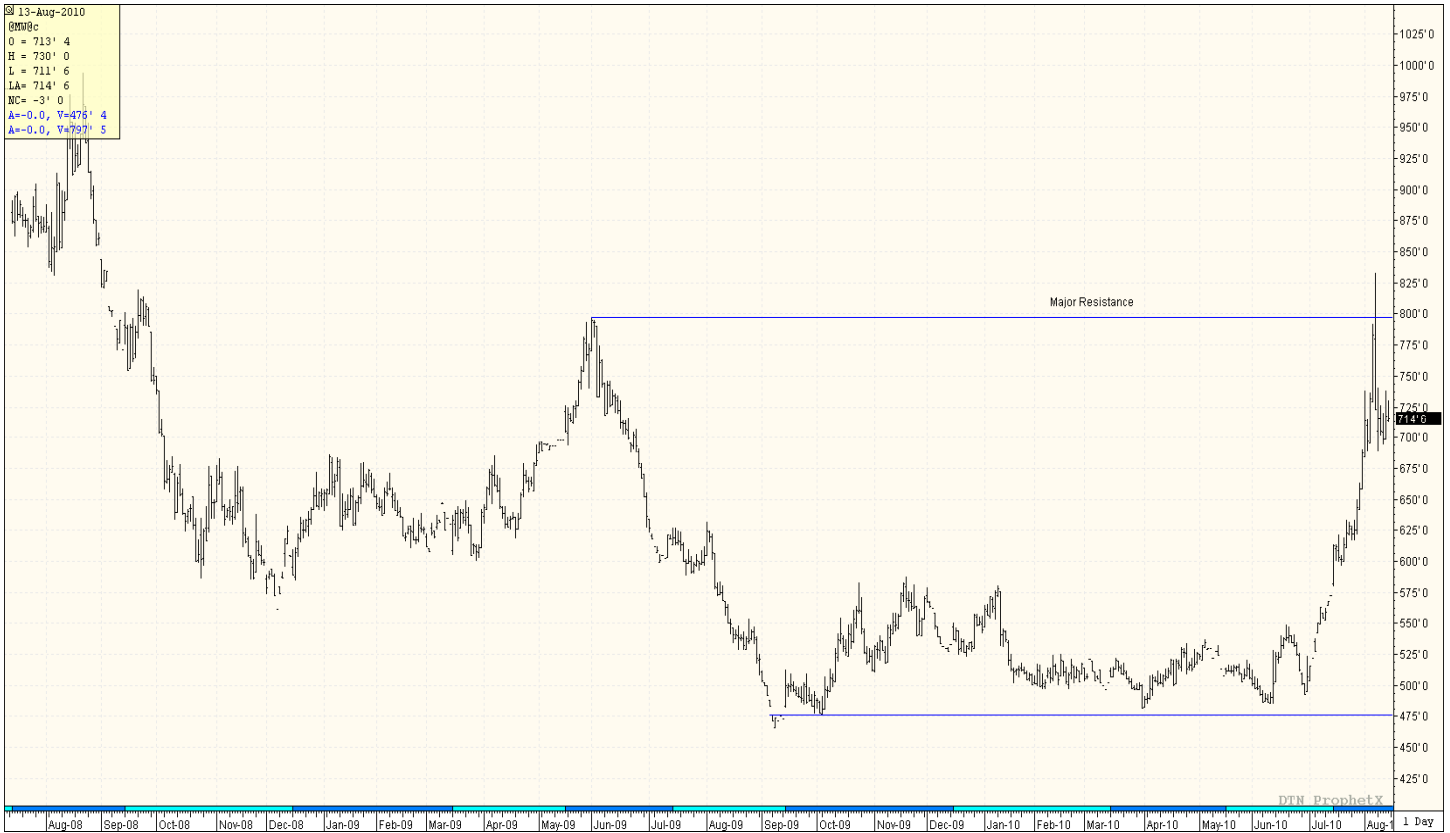
KANSAS CITY WHEAT



WEEKLY KANSAS CITY



MINNEAPOLIS WHEAT



WEEKLY MINNEAPOLIS

