



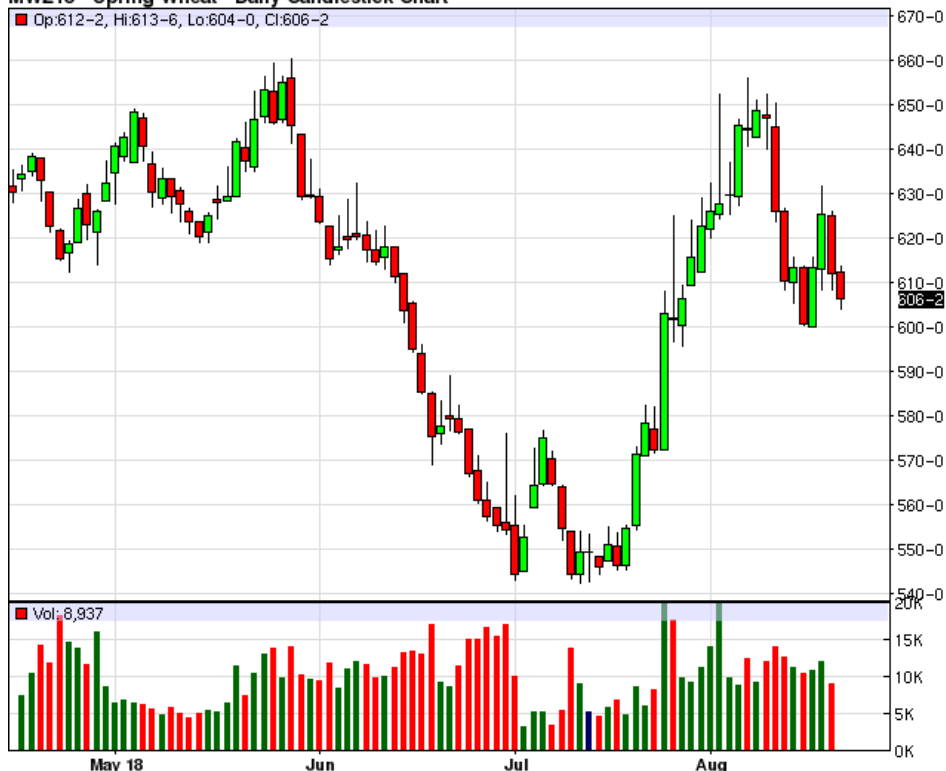
RICK ALEXANDER, MARKET STRATEGIST  
ZANER GROUP

8/22/2018

## TED & BRIAN ON PRO FARMER TOUR. LOOK FOR THE SCOOP ON OUR HEDGE LETTER NEXT WEEK.

Higher close for soybean oil while lower for Minneapolis, Kansas City and Chicago wheat along with oats, corn, soybeans and soybean meal. The wheat complex remains tricky but it does look like it's in a possible massive bottoming formation marred a little by Minneapolis not taking out its previous high on Aug. 7th. The Russian lower wheat production forecast along with other potentially bullish fundamental news mentioned last week has given the wheat complex new life. Of course this is a twisted way to look at it but how else are you going to get wheat to look and act bullish? It's been a while hasn't it? Oats still look okay and could still be in a possible large looking BULL FLAG. A decent support area looms below 260. Rough rice had REVERSAL TYPE ACTION (CONTRACT LOW) on Aug. 15th but now could be in a possible BEAR PENNANT. Corn has fallen the last three trading sessions continuing to look bearish after a weak month in July's. Also, it's acting like the retracement rally from July 7th (reversal type action is coming to an end. The PRO FARMER tour is checking out the estimated increased yields in corn for various states including Indiana and Nebraska. The bean complex continues to look weak overall but at least all three have been in consolidating modes as seen below with beans and meal actually possible bottoming signs. Use 920 for beans and 2950 for oil as good prices to close above for a possible reversal in their respective down trends or at least a chance for a decent retracement rally. BUY SIGNALS FOR MINNEAPOLIS, KANSAS CITY AND CHICAGO WHEAT ALONG WITH OATS WHILE SELL SIGNALS FOR CORN, SOYBEANS, SOYBEAN MEAL AND SOYBEAN OIL. For additional charts, quotes, news, commentary & more, sign up for a FREE 30 day trial to markethead.com.

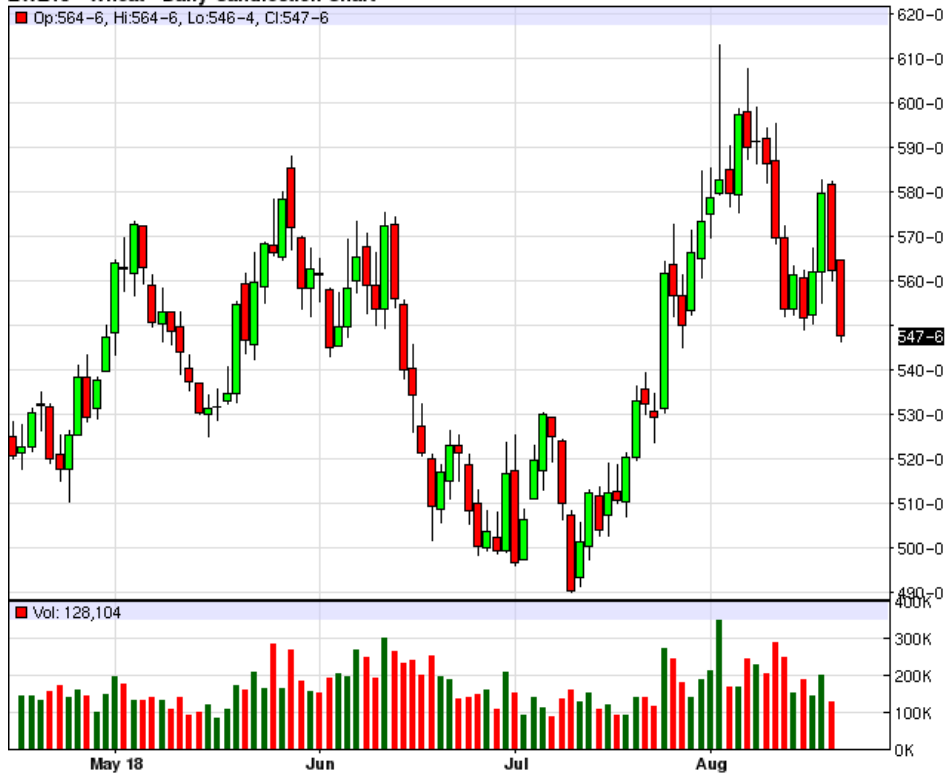
MWZ18 - Spring Wheat - Daily Candlestick Chart



KEZ18 - Hard Red Wheat - Daily Candlestick Chart



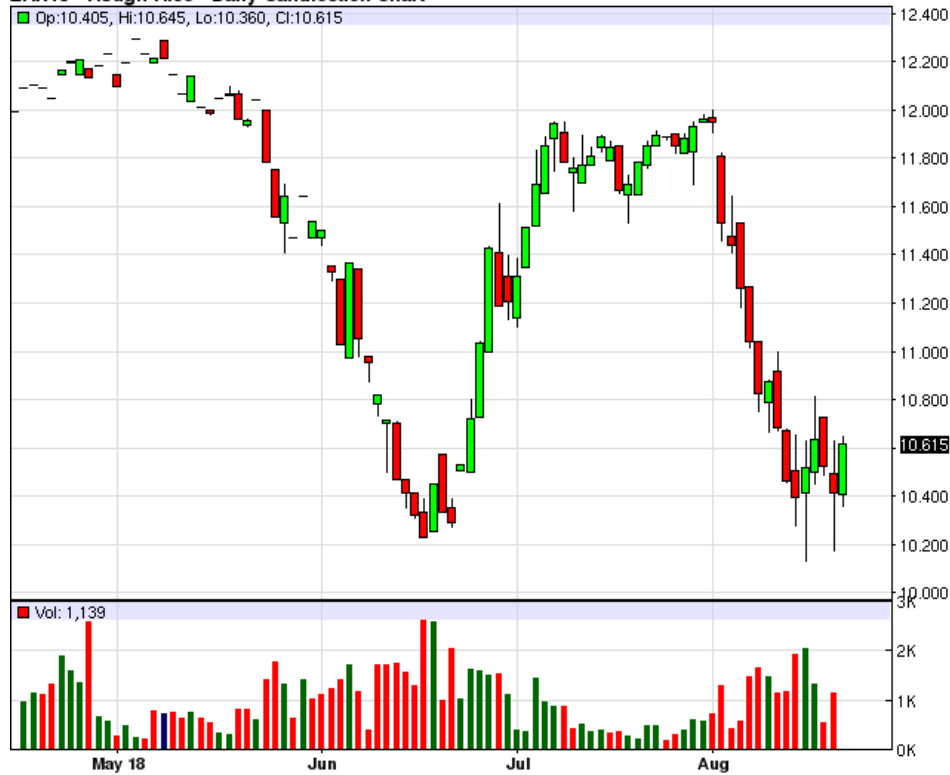
ZWZ18 - Wheat - Daily Candlestick Chart



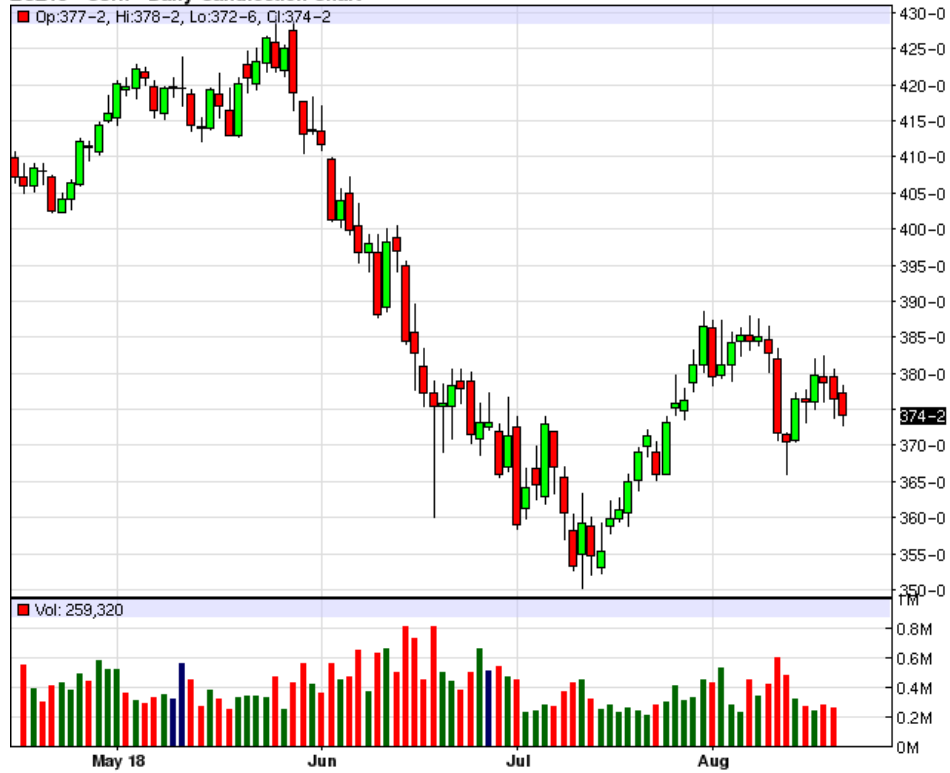
ZOZ18 - Oats - Daily Candlestick Chart



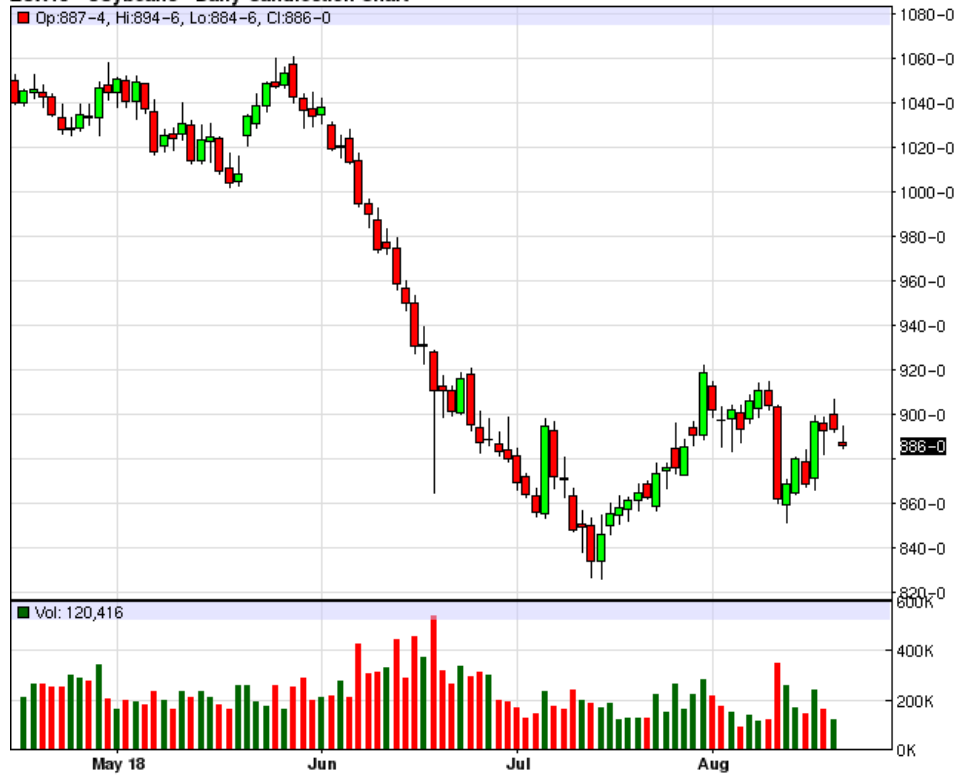
ZRX18 - Rough Rice - Daily Candlestick Chart



ZCZ18 - Corn - Daily Candlestick Chart



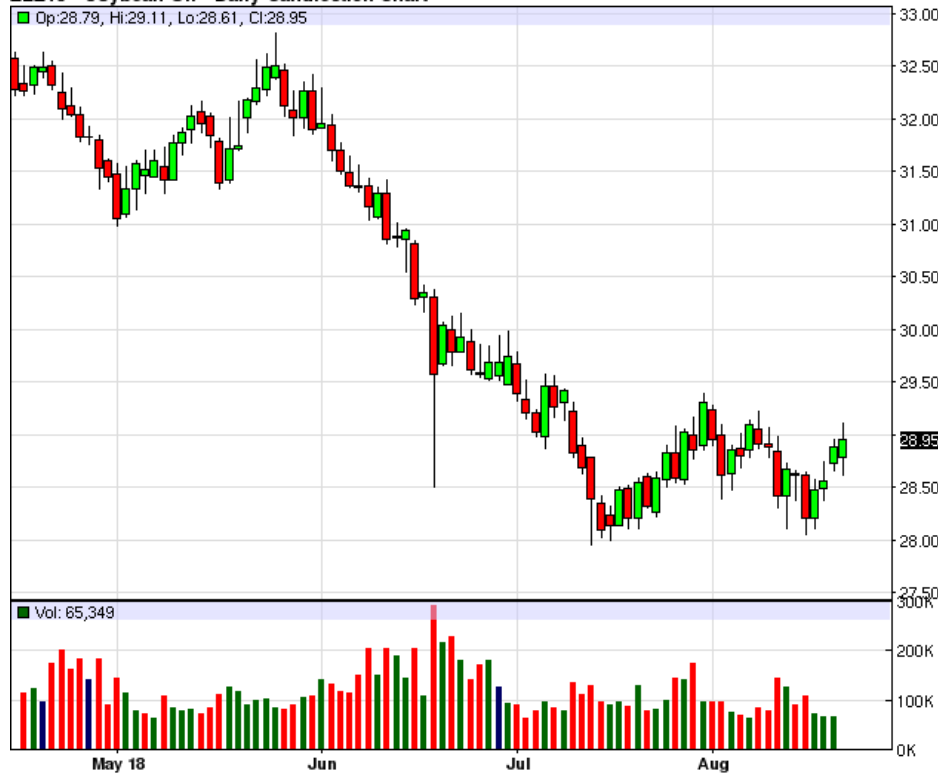
ZSX18 - Soybeans - Daily Candlestick Chart



ZMZ18 - Soybean Meal - Daily Candlestick Chart



ZLZ18 - Soybean Oil - Daily Candlestick Chart



To read more economic research reports like this one or subscribe to the mailing list, visit [www.zaner.com](http://www.zaner.com).

THIS MATERIAL IS CONVEYED AS A SOLICITATION FOR ENTERING INTO A DERIVATIVES TRANSACTION.

THIS MATERIAL HAS BEEN PREPARED BY A ZANER BROKER WHO PROVIDES RESEARCH MARKET COMMENTARY AND TRADE RECOMMENDATIONS AS PART OF HIS OR HER SOLICITATION FOR ACCOUNTS AND SOLICITATION FOR TRADES; HOWEVER, ZANER DOES NOT MAINTAIN A RESEARCH DEPARTMENT AS DEFINED IN CFTC RULE 1.71. ZANER, ITS PRINCIPALS, BROKERS AND EMPLOYEES MAY TRADE IN DERIVATIVES FOR THEIR OWN ACCOUNTS OR FOR THE ACCOUNTS OF OTHERS. DUE TO VARIOUS FACTORS (SUCH AS RISK TOLERANCE, MARGIN REQUIREMENTS, TRADING OBJECTIVES, SHORT TERM VS. LONG TERM STRATEGIES, TECHNICAL VS. FUNDAMENTAL MARKET ANALYSIS, AND OTHER FACTORS) SUCH TRADING MAY RESULT IN THE INITIATION OR LIQUIDATION OF POSITIONS THAT ARE DIFFERENT FROM OR CONTRARY TO THE OPINIONS AND RECOMMENDATIONS CONTAINED THEREIN.

THE RISK OF LOSS IN TRADING FUTURES CONTRACTS OR COMMODITY OPTIONS CAN BE SUBSTANTIAL, AND THEREFORE INVESTORS SHOULD UNDERSTAND THE RISKS INVOLVED IN TAKING LEVERAGED POSITIONS AND MUST ASSUME RESPONSIBILITY FOR THE RISKS ASSOCIATED WITH SUCH INVESTMENTS AND FOR THEIR RESULTS. PAST PERFORMANCE IS NOT NECESSARILY INDICATIVE OF FUTURE PERFORMANCE.

150 S Wacker Dr, Suite 2350 · Chicago, IL 60606 · Direct: 312-277-0050 Fax: 312-277-0150 · [info@zaner.com](mailto:info@zaner.com)

Copyright © 2010 Zaner Group LLC. All Rights Reserved.