



RICK ALEXANDER, MARKET STRATEGIST
ZANER GROUP

9/6/2017

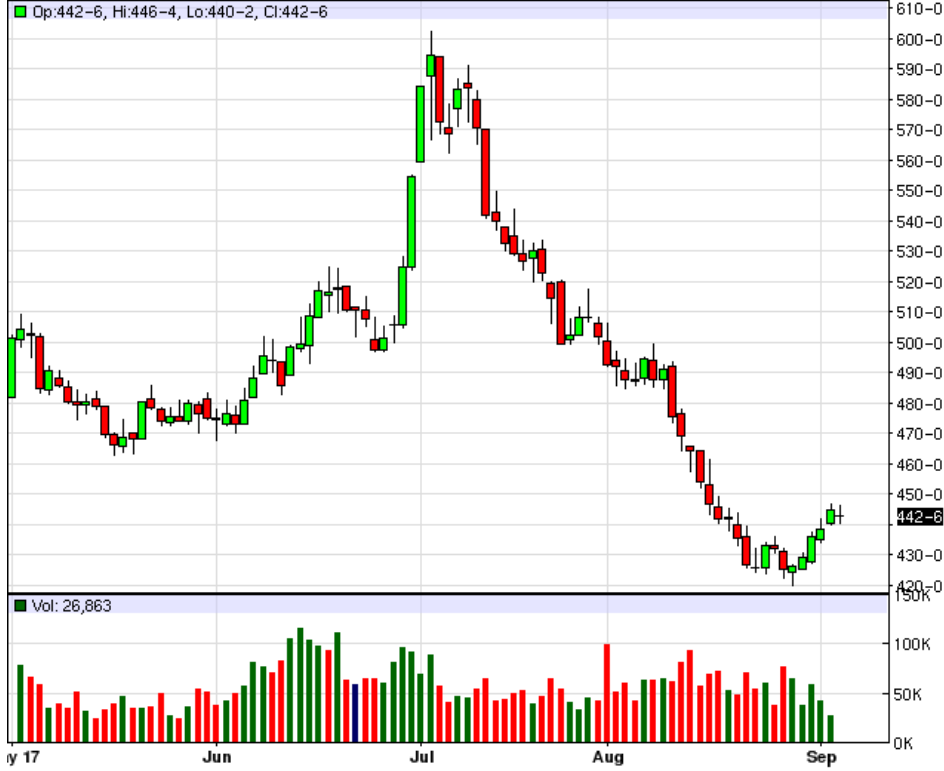
CRITICAL WEATHER WEEK BUT FORECASTS, SO FAR, SEEM OKAY FOR THE NEXT SIX TO TEN DAYS.

Higher closes for Kansas City and Chicago wheat along with rice, oats, corn, soybeans, soybean meal and soybean oil while lower for Minneapolis wheat. Not much change in weather except for some freeze scares which almost always surface but with little effect at this time of the year. So be prepared for possible lower prices continuing with some retracement rallies for whatever reason along the way. It seems the beans have the best chance to rally from weather changes while wheat (excluding Minneapolis) and corn should only have short term retracement rallies from time to time with little chance of going anywhere significant in my opinion. Of course, over my forty three plus years I've seen more surprises than I could ever remember. I once said the worst trades that I've ever made were the ones I felt the surest of! REMEMBER MY SIGNALS ARE FOR LONGER TERM TRENDS WHILE MOST OF MY TRADING RELIES ON SHORTER TERM SIGNALS WHICH YOU WILL HAVE TO CONTACT ME FOR. Meanwhile, we continue to wait for Irma to hit Florida towards the end of the week. Minneapolis wheat just made its worst low since the middle of June 22nd with little support down to the 570 area while both KC and Chicago had new CONTRACT LOWS on August 29th before settling higher in REVERSAL TYPE ACTION. I actually gave the same type of information with my last Wednesday's report and look what happened! Minneapolis has major support under 575 while KC and Chicago have their nearest resistance above 465 and 460 respectively. Also, DON'T FORGET RUSSIA'S LARGE WHEAT CROP HAS CAUSED A SHORTAGE OF FACILITIES TO STORE IT. Oats continue to look topy making their worst low and close since June but now are in a strong looking support area making a short position too risky in my opinion but buying calls the best approach if you want to trade this grain. Rice continues to look the best, by far, in the grain complex after making a new CONTRACT HIGH AND CLOSE on September 1st. It still looks critical to hold the 1222.5 price in my opinion. Until then I will keep my buy signal. Also, rice has been making HIGHER HIGHS AND HIGHER LOWERS since May. Corn had a KEY REVERSAL on August 31st which one would normally consider a very important technical formation except I've been burned many times over the years because every "TOM, Dick and Harry" knows about it. I've found that many times they fail first and then the market does what you expect it to do. Unfortunately, you never know what will happen until after the fact. The 360 - 400 range is now a formidable looking resistance area that I don't expect to be penetrated all the way any time soon. A trader's biggest fear is a dead market and that looks like where we're headed at this time. On the other hand, the bean complex has had a little spunk due to freeze worries and the beans being behind in many areas right now. Oil had its highest high since the middle of June before settling lower in REVERSAL TYPE ACTION. With that being said the beans and meal made their best high and close since August 10th. Still, I am not confident about a position in either direction right now but long would be my choice if I had to make one for the short term. BUY SIGNALS ROUGH RICE AND SOYBAN OIL. SELL SIGNALS FOR KANSAS CITY AND CHICAGO WHEAT ALONG WITH CORN, For additional charts, quotes, news, commentary & more, sign up for a FREE 30 -day trial to markethead.com.

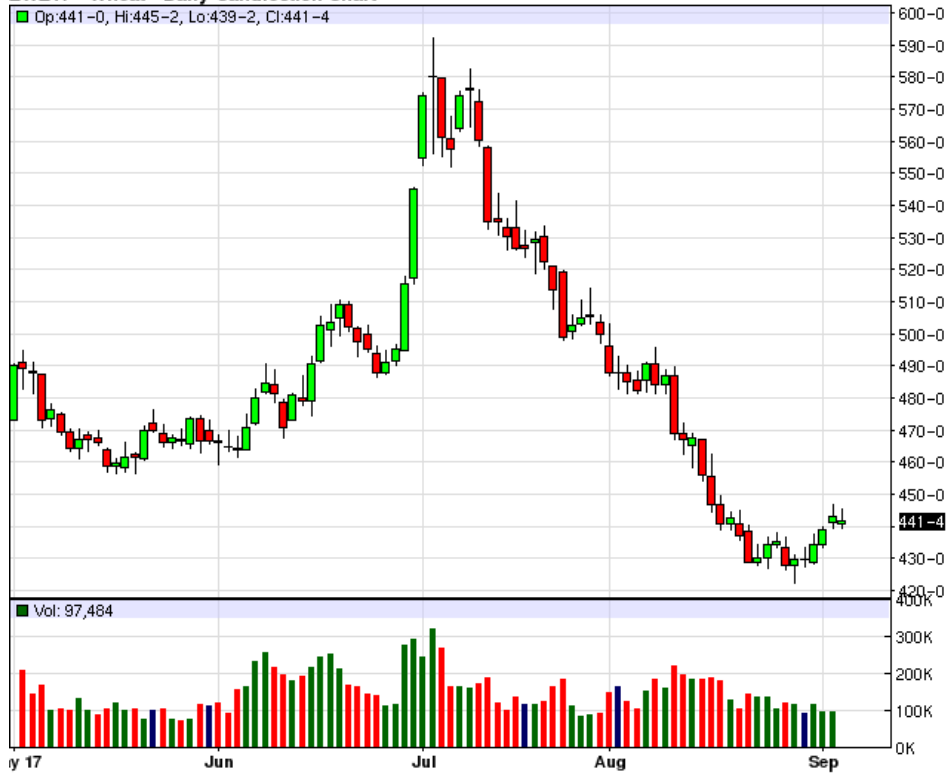
MWZ17 - Spring Wheat - Daily Candlestick Chart



KEZ17 - Hard Red Wheat - Daily Candlestick Chart



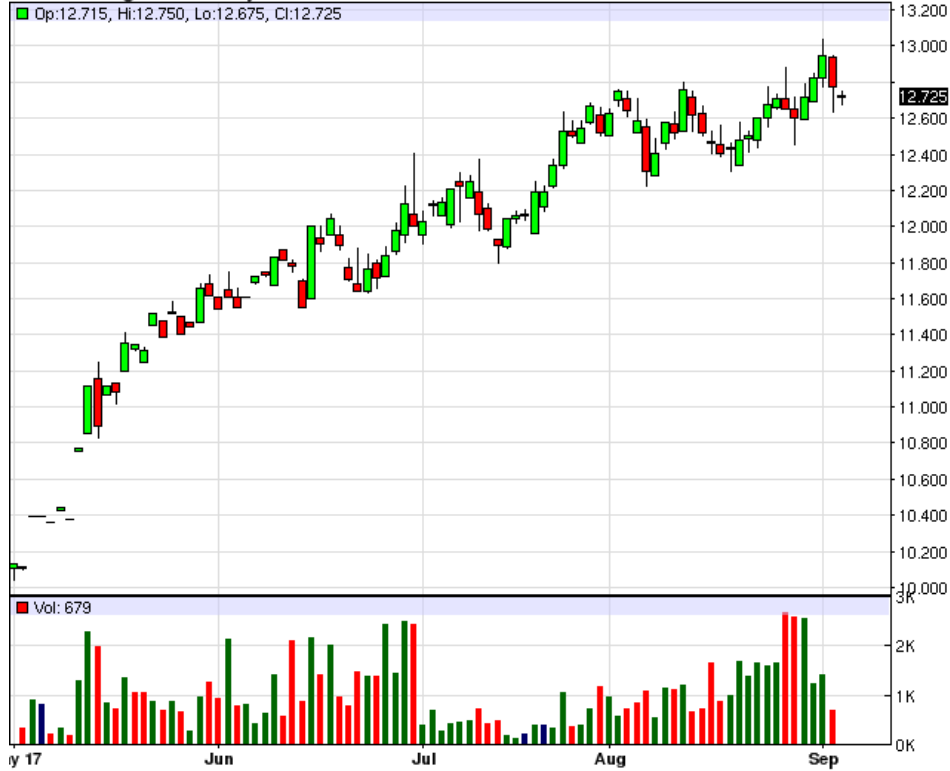
ZWZ17 - Wheat - Daily Candlestick Chart



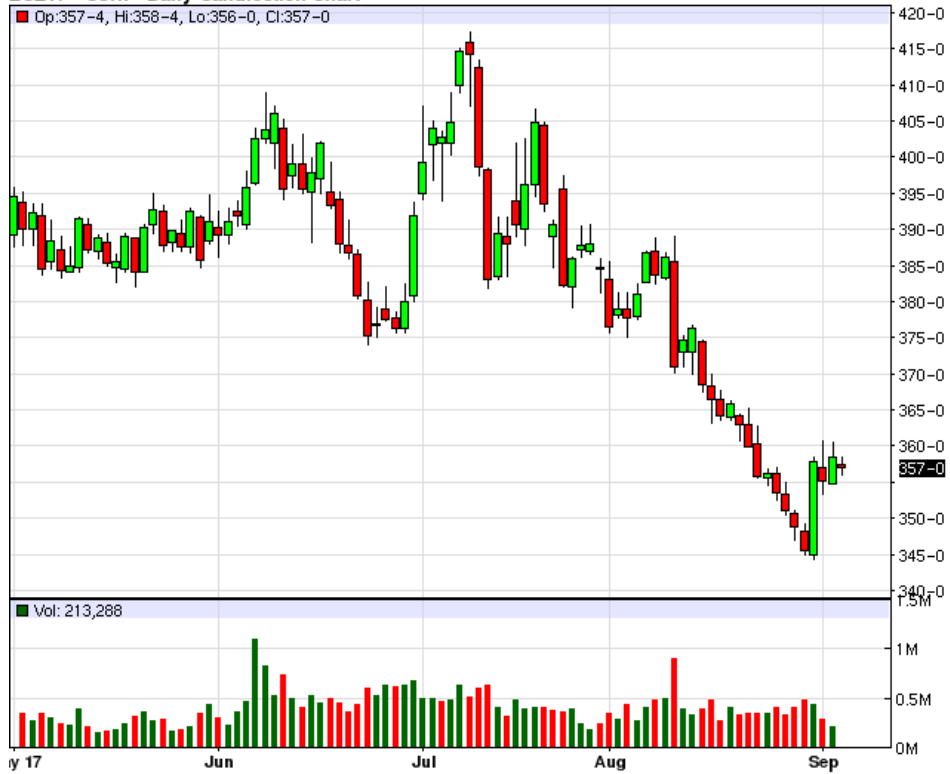
ZOZ17 - Oats - Daily Candlestick Chart



ZRX17 - Rough Rice - Daily Candlestick Chart



ZCZ17 - Corn - Daily Candlestick Chart



ZSX17 - Soybeans - Daily Candlestick Chart



ZMZ17 - Soybean Meal - Daily Candlestick Chart





To read more economic research reports like this one or subscribe to the mailing list, visit www.zaner.com.

THIS MATERIAL IS CONVEYED AS A SOLICITATION FOR ENTERING INTO A DERIVATIVES TRANSACTION.

THIS MATERIAL HAS BEEN PREPARED BY A ZANER BROKER WHO PROVIDES RESEARCH MARKET COMMENTARY AND TRADE RECOMMENDATIONS AS PART OF HIS OR HER SOLICITATION FOR ACCOUNTS AND SOLICITATION FOR TRADES; HOWEVER, ZANER DOES NOT MAINTAIN A RESEARCH DEPARTMENT AS DEFINED IN CFTC RULE 1.71. ZANER, ITS PRINCIPALS, BROKERS AND EMPLOYEES MAY TRADE IN DERIVATIVES FOR THEIR OWN ACCOUNTS OR FOR THE ACCOUNTS OF OTHERS. DUE TO VARIOUS FACTORS (SUCH AS RISK TOLERANCE, MARGIN REQUIREMENTS, TRADING OBJECTIVES, SHORT TERM VS. LONG TERM STRATEGIES, TECHNICAL VS. FUNDAMENTAL MARKET ANALYSIS, AND OTHER FACTORS) SUCH TRADING MAY RESULT IN THE INITIATION OR LIQUIDATION OF POSITIONS THAT ARE DIFFERENT FROM OR CONTRARY TO THE OPINIONS AND RECOMMENDATIONS CONTAINED THEREIN.

THE RISK OF LOSS IN TRADING FUTURES CONTRACTS OR COMMODITY OPTIONS CAN BE SUBSTANTIAL, AND THEREFORE INVESTORS SHOULD UNDERSTAND THE RISKS INVOLVED IN TAKING LEVERAGED POSITIONS AND MUST ASSUME RESPONSIBILITY FOR THE RISKS ASSOCIATED WITH SUCH INVESTMENTS AND FOR THEIR RESULTS. PAST PERFORMANCE IS NOT NECESSARILY INDICATIVE OF FUTURE PERFORMANCE.

150 S Wacker Dr, Suite 2350 · Chicago, IL 60606 · Direct: 312-277-0050 Fax: 312-277-0150 · info@zaner.com

Copyright © 2010 Zaner Group LLC. All Rights Reserved.