



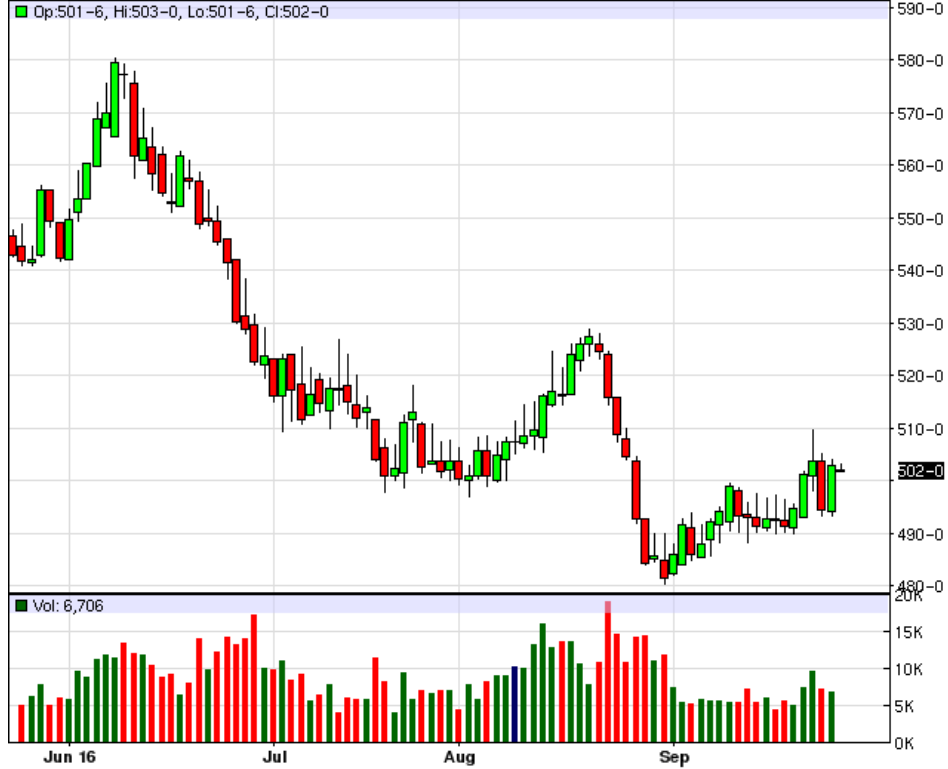
RICK ALEXANDER, MARKET STRATEGIST  
ZANER GROUP

9/28/2016

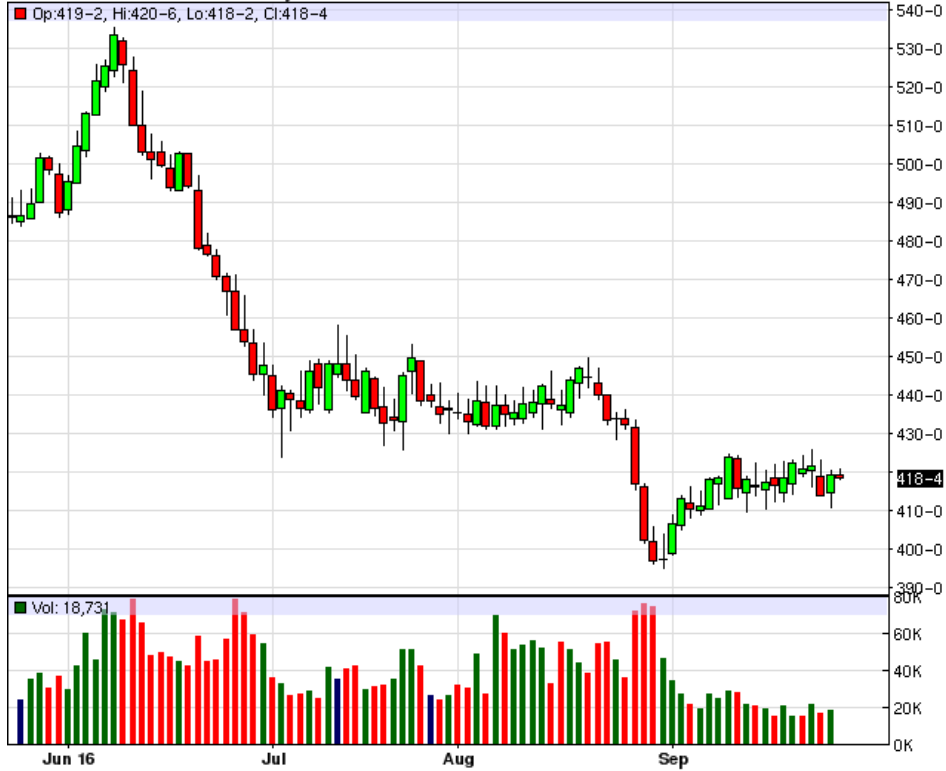
## GRAIN STOCKS FRIDAY. EXPORTS GOOD. HARVEST SLIGHTLY BEHIND. STOCKS ESTIMATES HIGHER

Higher closes for soybeans, soybean meal, oats, rough rice, corn, Minneapolis, Kansas City and Chicago wheat while lower for soybean oil. Decent exports continue and NEW CONTRACT LOWS FOR SOYBEANS AND MEAL BUT HIGHER CLOSES MEANING REVERSAL TYPE ACTION. What this continues to tell me is that we pretty much have run out of potentially bad news except maybe in the bean complex and that, so far, has been offset by good sales and slightly behind in harvesting. On the other hand the stock estimates are higher than USDA forecast and the good to excellent crop conditions are holding steady at 73 to 74%. Winter wheat planting are right on the 30% average and the crop was 8% merged also right on the average. First quarter wheat stocks are estimated at 2.397 billion bushels versus 2.097 a year ago. Minneapolis deliverable stocks are estimated at 29.7 million bushels versus 28.4 last week, while 33.1 a year ago. KC's deliverable stocks look like close to 110 million while nearly the same last week but 86.8 a year ago. Corn's trade estimates for the report are 1.754 million bushels for 2015 versus the USDS number of 1.731 while the bean production guesses are around 3.928 compared to 3.929 (USDA). Ending stock guesses are 201 against 191 by the government. Minneapolis has been retracing higher since contract lows on Aug. 31st, KC sideways to higher since Aug. 30th (contract low and close), and Chicago sideways since Sept. 6th (contract low and close Aug. 31st.). Minneapolis has been in an overall downtrend since June, 2011, KS since Feb. 2011, Chicago July 12, oats March 14, rough rice March 08 (latest being June 14), corn Aug. 12, soybeans Sept. 12, meal, Aug. 12 and soybean oil since Aug. 11. Of course, there have been retracement rallies along the way but until we prove otherwise, we must be aware of these trends. We all know our costs have gone only higher along the way. Minneapolis has its nearest resistance around 450 while KC and Chicago 430 which hasn't changed. Oats has its closest resistance around 180 while moving sideways to lower since Sept. 6th with a contract low on Sept. 13th. Rice has been retracing sideways to higher but could now be in a bearish consolidation formation. A contract low and close was made on Sept. 11th. Corn has been trying to bottom since the beginning of August still needing to settle over 350 in my opinion. Beans just made a new CONTRACT LOW while settling higher in reversal type action but still has been trending lower since the middle of June. I still need to see the beans to close over 1020. The same goes for meal having reversal type action after making a new contract low. However, its chart pattern looks worse than the beans which doesn't help the latter. I still need to see a close over 320 with a near term objective of 330 which also is a decent resistance area. Oil has fallen three consecutive sessions after bouncing off of some resistance but still looks okay compared to the rest of the grain complex. BUY SIGNAL FOR SOYBEAN OIL. SELL SIGNALS FOR MINNEAPOLIS, KANSAS CITY AND CHICAGO WHEAT ALONG WITH OATS. ROUGH RICE, CORN, SOYBEANS AND SOYBEAN MEAL. For additional charts, quotes, news, commentary & more, sign up for a FREE 30 -day trial to markethead.com.

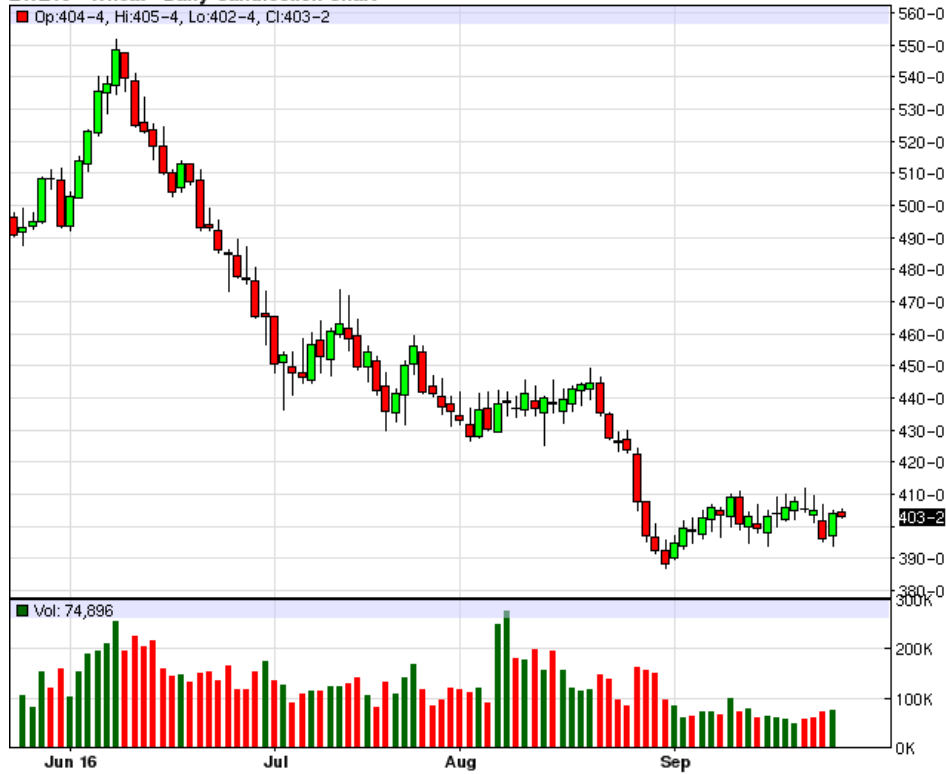
MWZ16 - Spring Wheat - Daily Candlestick Chart



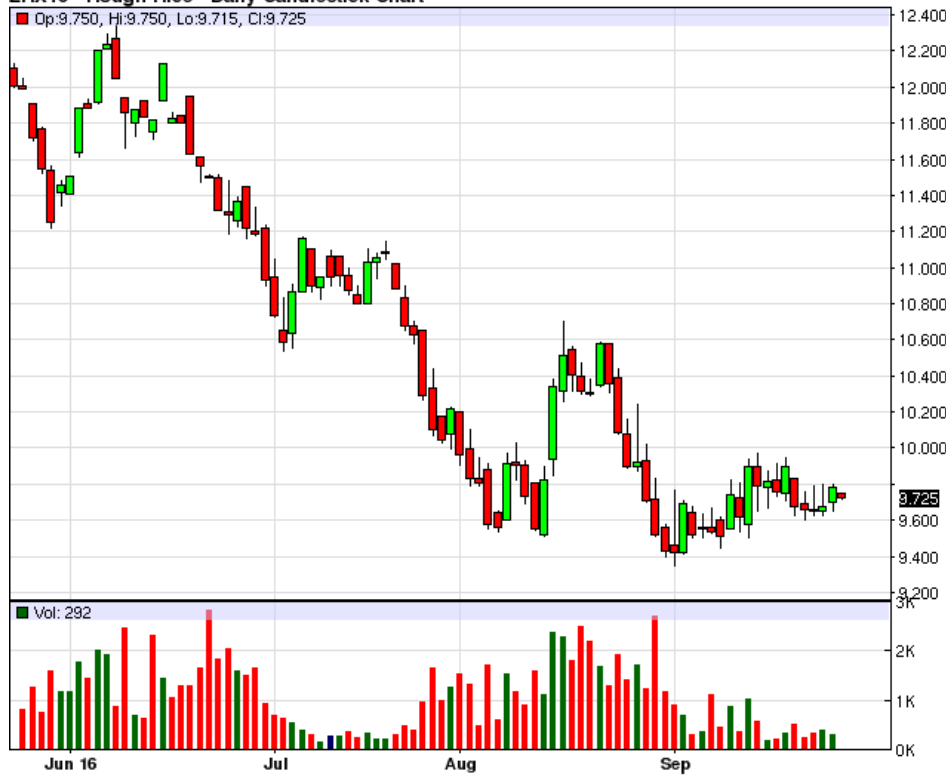
KEZ16 - Hard Red Wheat - Daily Candlestick Chart



ZWZ16 - Wheat - Daily Candlestick Chart



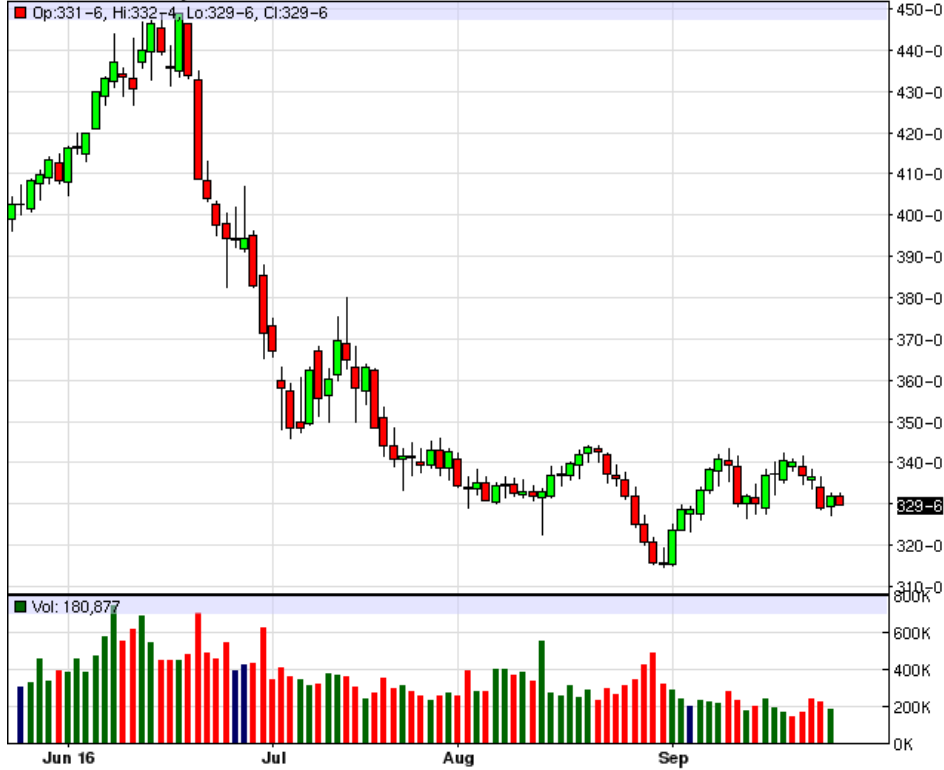
ZRX16 - Rough Rice - Daily Candlestick Chart



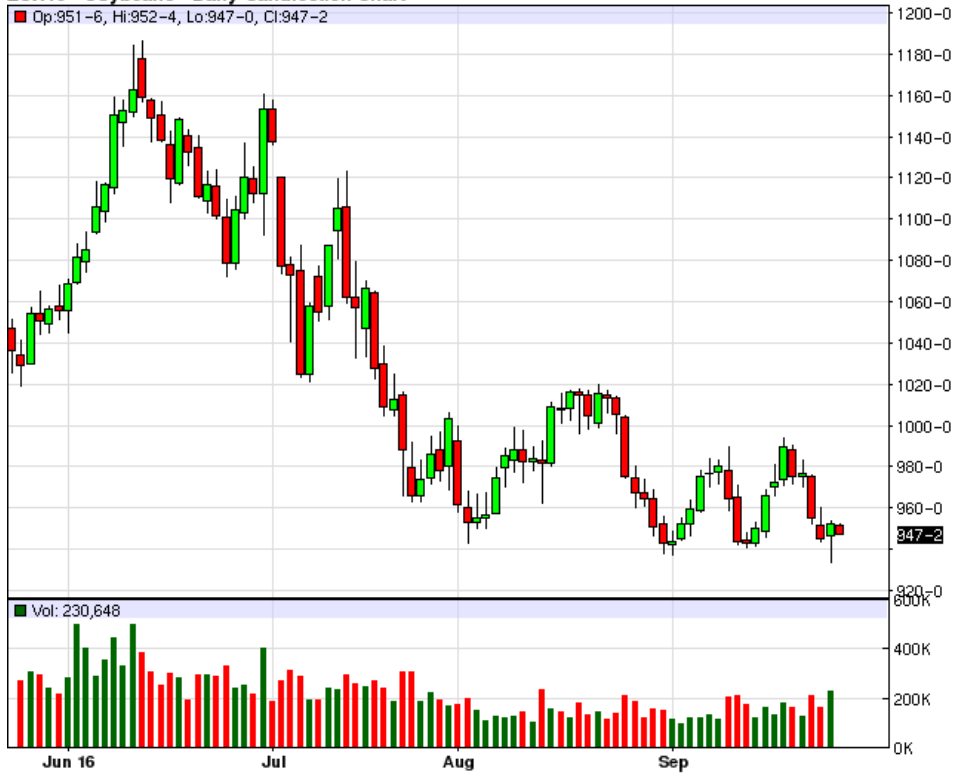
ZOZ16 - Oats - Daily Candlestick Chart



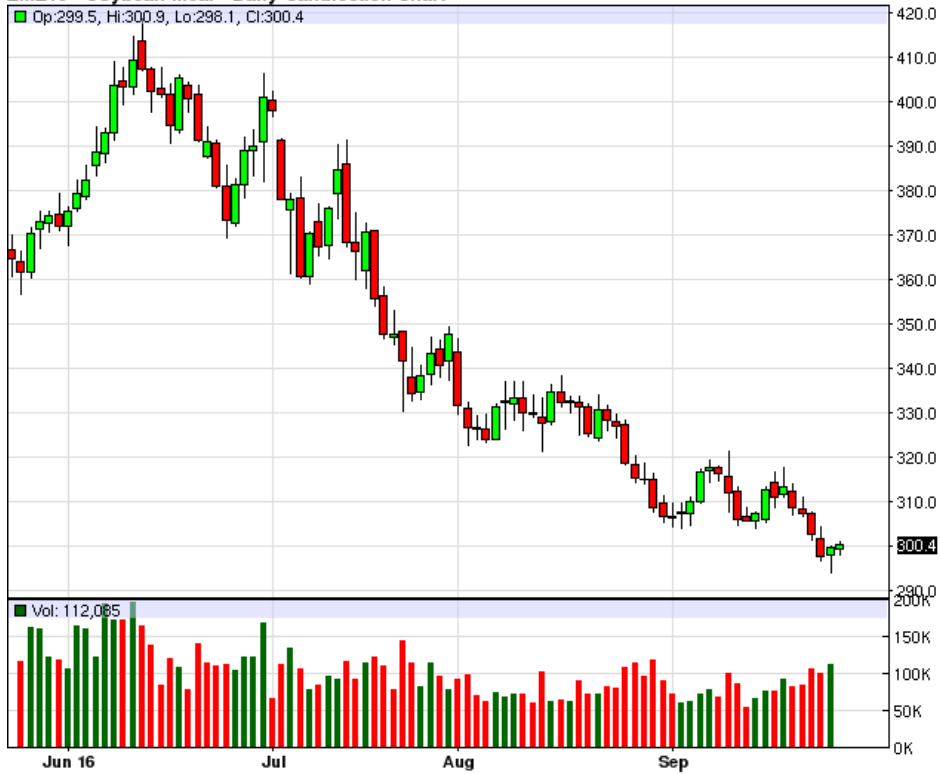
ZCZ16 - Corn - Daily Candlestick Chart



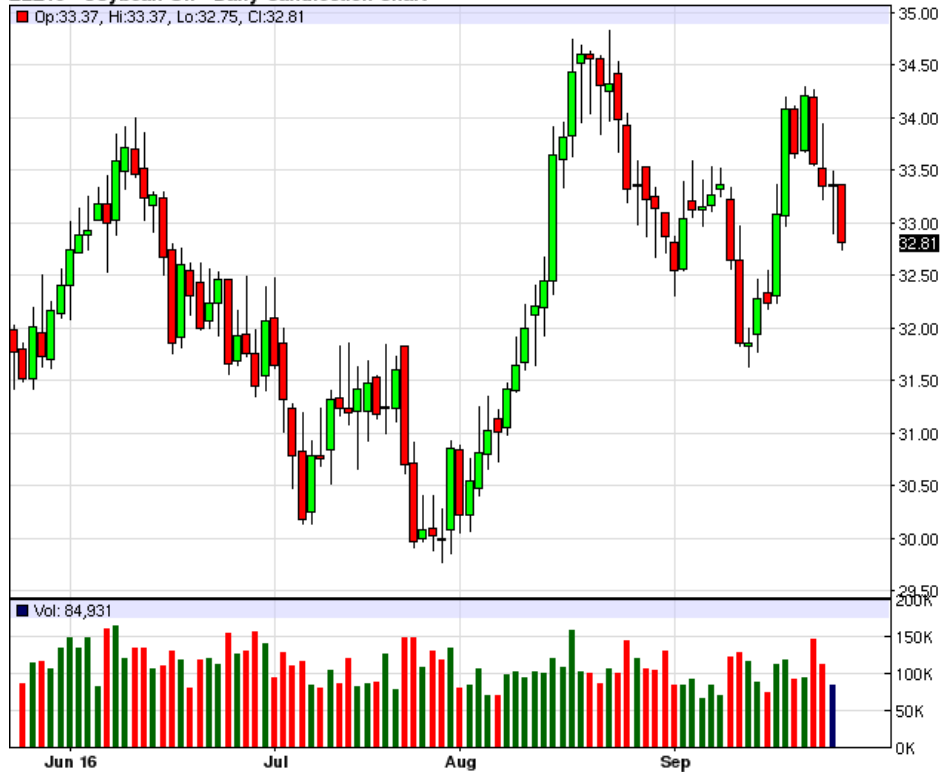
ZSX16 - Soybeans - Daily Candlestick Chart



ZMZ16 - Soybean Meal - Daily Candlestick Chart



ZLZ16 - Soybean Oil - Daily Candlestick Chart



To read more economic research reports like this one or subscribe to the mailing list, visit [www.zaner.com](http://www.zaner.com).

THIS MATERIAL IS CONVEYED AS A SOLICITATION FOR ENTERING INTO A DERIVATIVES TRANSACTION.

THIS MATERIAL HAS BEEN PREPARED BY A ZANER BROKER WHO PROVIDES RESEARCH MARKET COMMENTARY AND TRADE RECOMMENDATIONS AS PART OF HIS OR HER SOLICITATION FOR ACCOUNTS AND SOLICITATION FOR TRADES; HOWEVER, ZANER DOES NOT MAINTAIN A RESEARCH DEPARTMENT AS DEFINED IN CFTC RULE 1.71. ZANER, ITS PRINCIPALS, BROKERS AND EMPLOYEES MAY TRADE IN DERIVATIVES FOR THEIR OWN ACCOUNTS OR FOR THE ACCOUNTS OF OTHERS. DUE TO VARIOUS FACTORS (SUCH AS RISK TOLERANCE, MARGIN REQUIREMENTS, TRADING OBJECTIVES, SHORT TERM VS. LONG TERM STRATEGIES, TECHNICAL VS. FUNDAMENTAL MARKET ANALYSIS, AND OTHER FACTORS) SUCH TRADING MAY RESULT IN THE INITIATION OR LIQUIDATION OF POSITIONS THAT ARE DIFFERENT FROM OR CONTRARY TO THE OPINIONS AND RECOMMENDATIONS CONTAINED THEREIN.

THE RISK OF LOSS IN TRADING FUTURES CONTRACTS OR COMMODITY OPTIONS CAN BE SUBSTANTIAL, AND THEREFORE INVESTORS SHOULD UNDERSTAND THE RISKS INVOLVED IN TAKING LEVERAGED POSITIONS AND MUST ASSUME RESPONSIBILITY FOR THE RISKS ASSOCIATED WITH SUCH INVESTMENTS AND FOR THEIR RESULTS. PAST PERFORMANCE IS NOT NECESSARILY INDICATIVE OF FUTURE PERFORMANCE.

150 S Wacker Dr, Suite 2350 · Chicago, IL 60606 · Direct: 312-277-0050 Fax: 312-277-0150 · [info@zaner.com](mailto:info@zaner.com)

Copyright © 2010 Zaner Group LLC. All Rights Reserved.