

MIDWEST MARKET SOLUTIONS, INC.

"THE LEADING EDGE IN COMMODITIES"

327 BROADWAY
YANKTON, SOUTH DAKOTA 57078
866-203-9655
605-260-3063 FAX
WWW.MIDWESTMARKETSOLUTIONS.COM



THE MARKET INSIDER NEWSLETTER

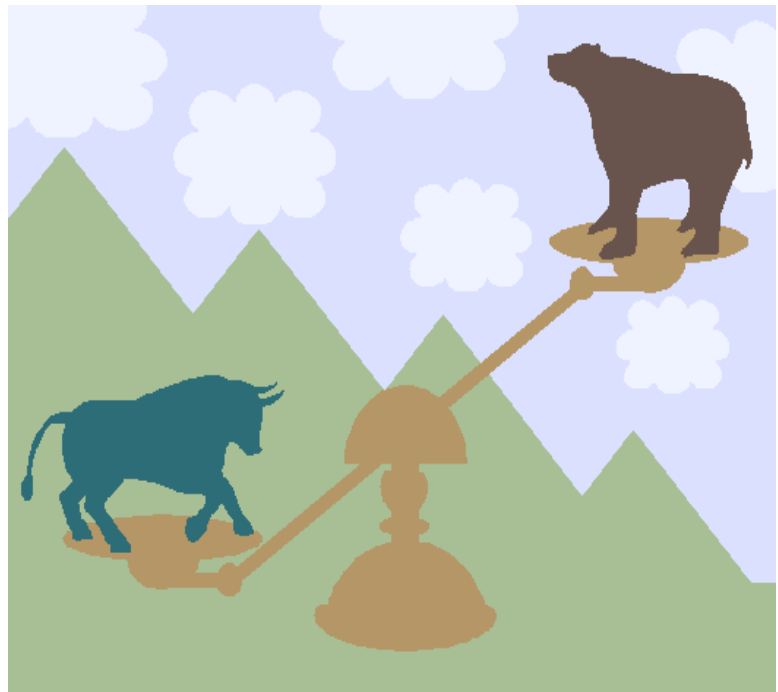
October 12, 2009

By: Brian Hoops, President
Midwest Market Solutions, Inc.

VISIT OUR WEBSITE AT www.midwestmarketsolutions.com FOR MORE INFORMATION.

Inside This Issue:

THE OCTOBER SUPPLY DEMAND REPORT	2
CORN OUTLOOK	3,4
SOYBEAN OUTLOOK	5-7
WHEAT OUTLOOK	8-11
LIVE CATTLE OUTLOOK	12
FEEDER CATTLE OUTLOOK	13
LEAN HOG OUTLOOK	14
NEWS	15
NEWS	16
WEATHER	17
CALENDAR OF EVENTS	18
MARGIN REQUIREMENTS	19
COMPANY INFO	20
DISCLAIMER	20



WHEAT



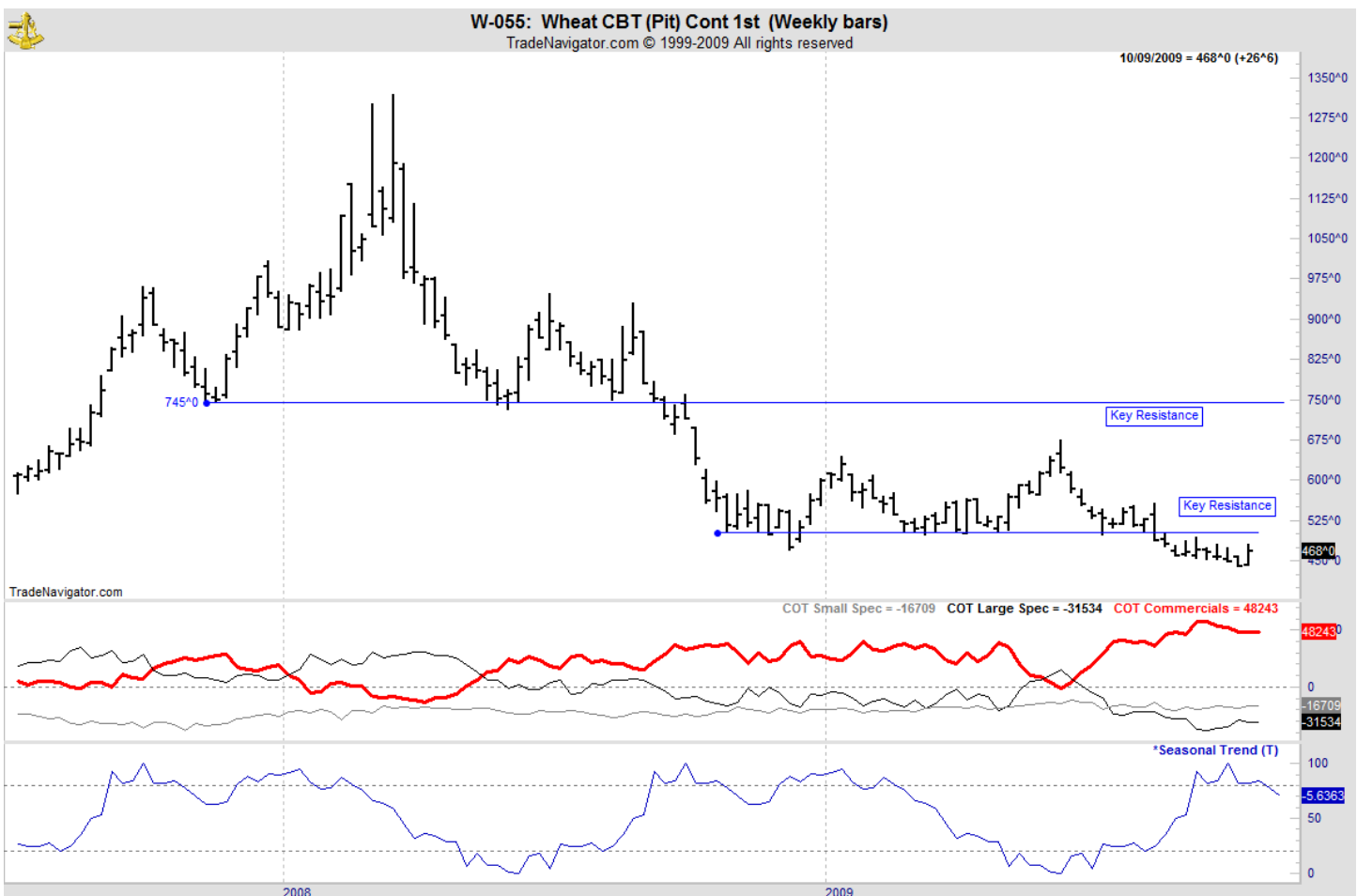
ANALYSIS

For the week, Chicago wheat closed \$0.26 3/4 higher; Kansas City wheat \$0.25 1/2 higher and Minneapolis wheat \$0.25 higher. The weekly export sales report showed net sales of 767,300 metric tons were up 43 percent from the previous week and 52 percent from the prior 4-week average. Increases were reported for Nigeria (159,100 MT), Taiwan (87,500 MT), Japan (86,800 MT), Morocco (52,000 MT), Thailand (50,100 MT), the Philippines (48,000 MT), Yemen (40,000 MT), Chile (37,400 MT), and Canada (37,300 MT). Decreases were reported for Egypt (1,000 MT). This year's export forecast is way behind last year's sales profile, 424 mb vs. 646 mb. The U.S. need to export 15.04 mb each week to meet the USDA forecast. The lack of demand for U.S. wheat is the primary reason why wheat values are on the defensive and will continue to be throughout the winter. U.S. winter wheat planting advanced to 53% this week from 36% last week and compares to 55% last year and average. Some early delays in SRW planting are beginning to show up due to the slow soybean crop, but planting in the central/southern plains and PNW are occurring without issue.

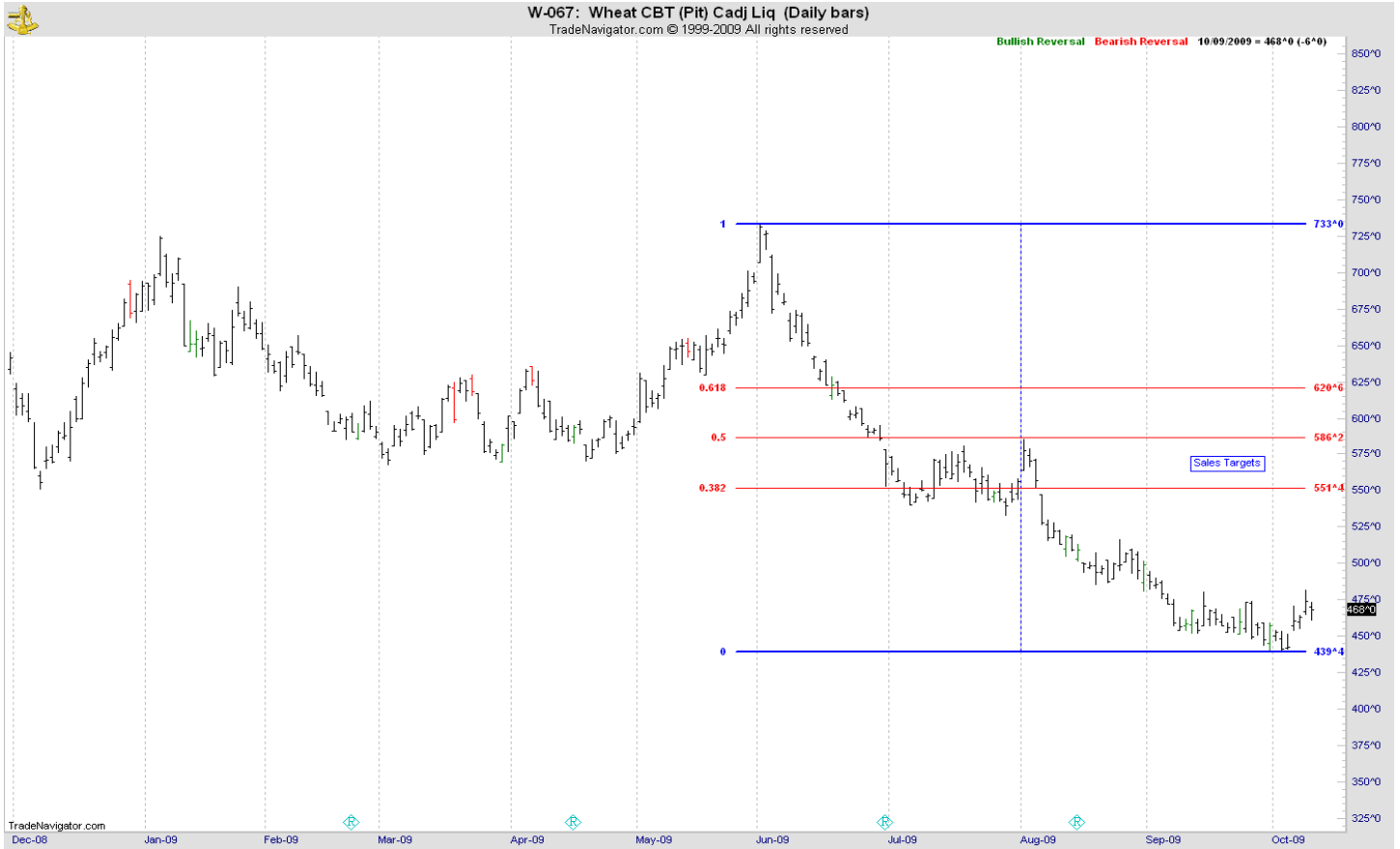
STRATEGY & OUTLOOK

Producers should have now sold/hedged all of their 2009 crop when KC wheat reached the long term price objective of \$6.80 to \$7.00. Producers should have used a combination of hedges, options and cash sales to manage price risk. Producers have now tried to re-own a part of sold wheat when wheat tested key support of \$5.03 Chicago.

WEEKLY CHICAGO



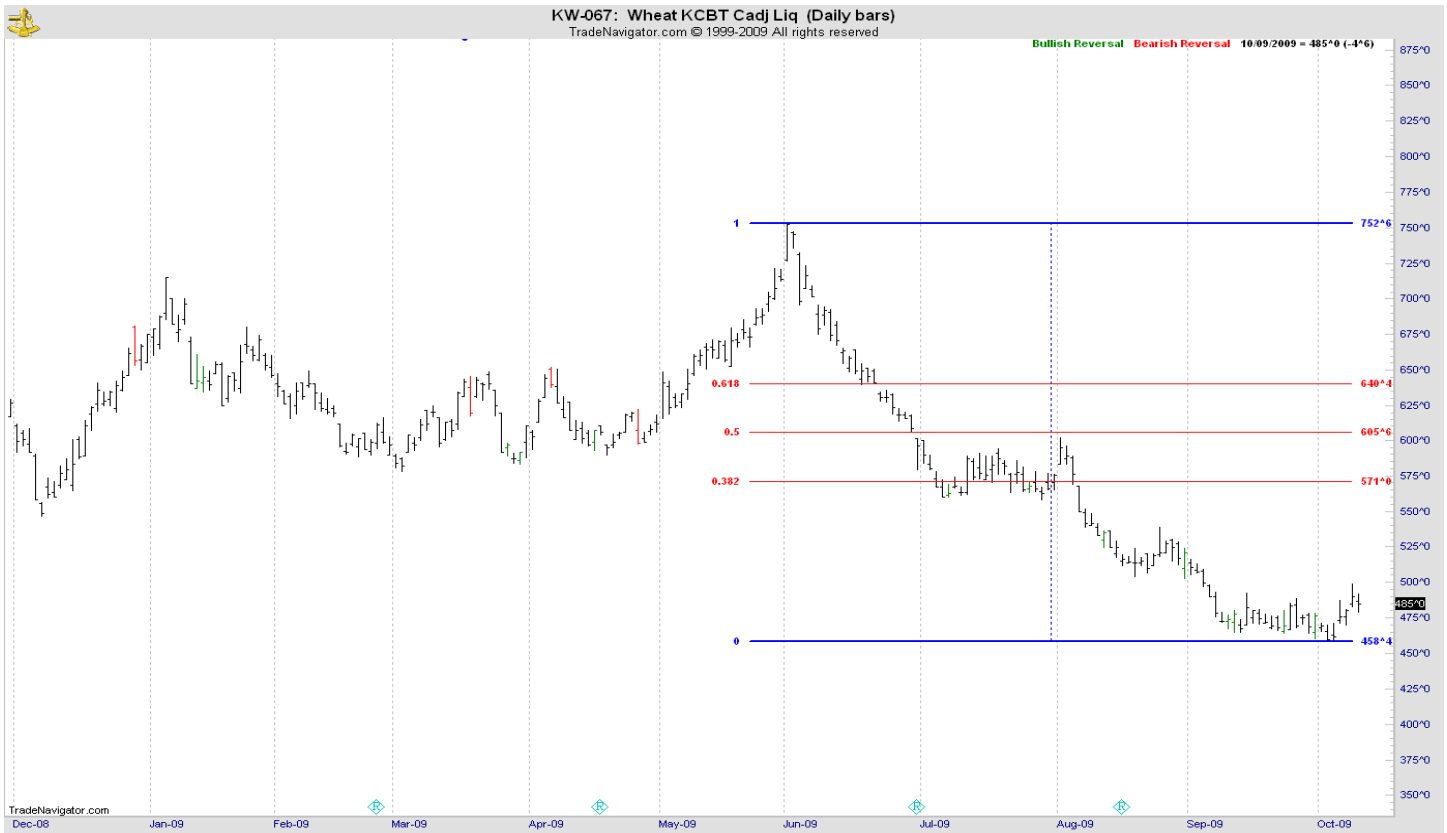
CHICAGO WHEAT



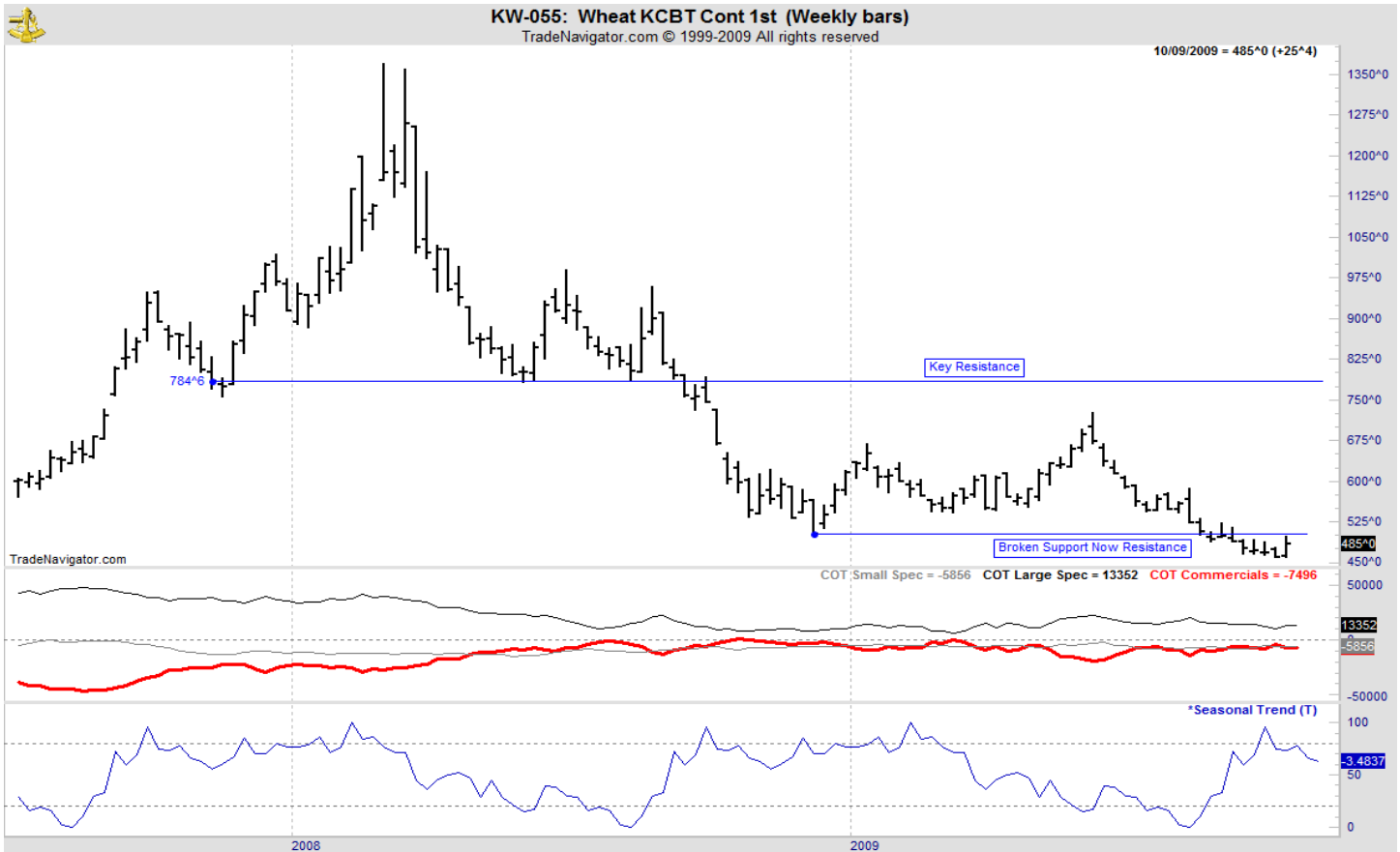
OATS



KANSAS CITY WHEAT



WEEKLY KANSAS CITY



MINNEAPOLIS WHEAT



WEEKLY MINNEAPOLIS

