



RICK ALEXANDER, MARKET STRATEGIST
ZANER GROUP

11/21/2018

STRAINED BETWEEN US & CHINA AT ECONOMIC CONFERENCE LAST WEEKEND, G20 SUMMIT AT END OF MONTH

Higher closes for oats, Minneapolis and Chicago wheat along with soybeans, soybean meal and soybean oil while lower Kansas City wheat, rough rice and corn. Not much to say once again with continued slow exports and the harvest now mostly done. The big news continues to be the upcoming G 20 summit at the end of the month but last weekend's conference showed strained relations between the United States (Pence) and China which is foreboding. Now the ranges for the wheat complex are being threatened at the lower end with downtrends since August across the board. Sell rallies with the help of charts and your broker(s). Oats remain bullish spiking higher on Monday making a new CONTRACT HIGH AND CLOSE. Good support lies below 290. Rough rice has been trading between 1040 - 1130 over the last couple of months and range bound since August. Rice's overall remains down while consolidating over the last 2 - 3 weeks. Although corn exports continue to slow down and no matter what the fundamental news has been, it still is in the same trading range (350 - 390) also since August. Don't make complicated judgments on this grain but I now have a SELL SIGNAL based off the chart formation below. Just trade it accordingly. Except for maybe oil, the bean complex has held up remarkably well considering the barrage of bearish fundamental news being thrown at it! The beans have actually been in a trading range of roughly 840 - 900 since last August and still look like they could be in a possible bottoming formation. Meal, on the other hand, has been 'dead in the water' while in a 305 - 320 range, give or take, also since August. Oil looks like it's going to test the September low while looking weak overall. BUY SIGNAL FOR OATS. SELL SIGNALS FOR CORN, MINNEAPOLIS, KANSAS CITY AND CHICAGO WHEAT ALONG WITH SOYBEAN OIL. For additional charts, quotes, news, commentary & more, sign up for a FREE 30 day trial to markethead.com.

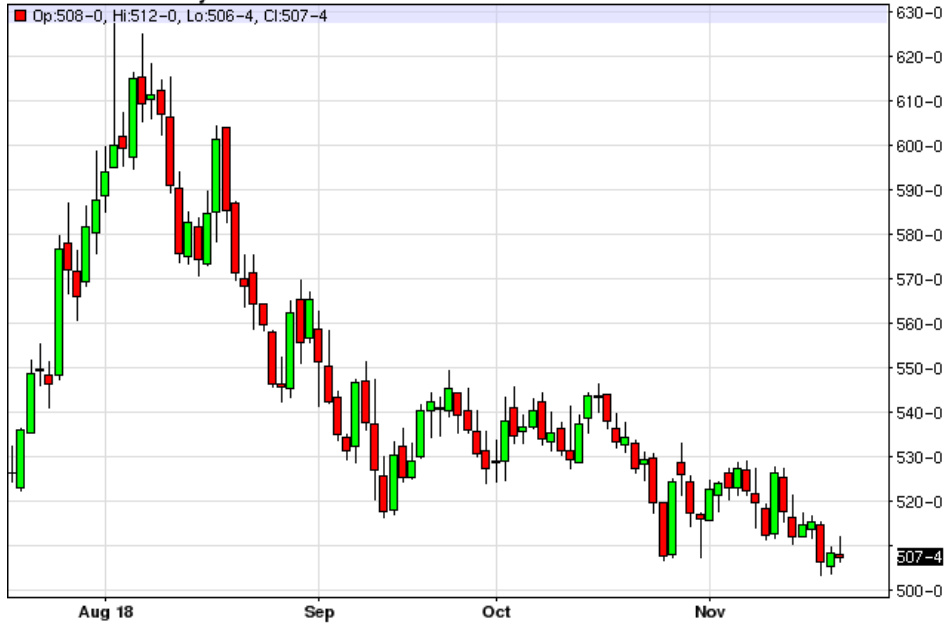
MWH19 - Spring Wheat - Daily Candlestick Chart



KEH19 - Hard Red Wheat - Daily Candlestick Chart



ZWH19 - Wheat - Daily Candlestick Chart



ZOH19 - Oats - Daily Candlestick Chart



ZRF19 - Rough Rice - Daily Candlestick Chart



ZCH19 - Corn - Daily Candlestick Chart



ZSF19 - Soybeans - Daily Candlestick Chart



ZMF19 - Soybean Meal - Daily Candlestick Chart**ZLZ18 - Soybean Oil - Daily Candlestick Chart**

To read more economic research reports like this one or subscribe to the mailing list, visit www.zaner.com.

THIS MATERIAL IS CONVEYED AS A SOLICITATION FOR ENTERING INTO A DERIVATIVES TRANSACTION.

THIS MATERIAL HAS BEEN PREPARED BY A ZANER BROKER WHO PROVIDES RESEARCH MARKET COMMENTARY AND TRADE RECOMMENDATIONS AS PART OF HIS OR HER SOLICITATION FOR ACCOUNTS AND SOLICITATION FOR TRADES; HOWEVER, ZANER DOES NOT MAINTAIN A RESEARCH DEPARTMENT AS DEFINED IN CFTC RULE 1.71. ZANER, ITS PRINCIPALS, BROKERS AND EMPLOYEES MAY TRADE IN DERIVATIVES FOR THEIR OWN ACCOUNTS OR FOR THE ACCOUNTS OF OTHERS. DUE TO VARIOUS FACTORS (SUCH AS RISK TOLERANCE, MARGIN REQUIREMENTS, TRADING OBJECTIVES, SHORT TERM VS. LONG TERM STRATEGIES, TECHNICAL VS. FUNDAMENTAL MARKET ANALYSIS, AND OTHER FACTORS) SUCH TRADING MAY RESULT IN THE INITIATION OR LIQUIDATION OF POSITIONS THAT ARE DIFFERENT FROM OR CONTRARY TO THE OPINIONS AND

RECOMMENDATIONS CONTAINED THEREIN.

THE RISK OF LOSS IN TRADING FUTURES CONTRACTS OR COMMODITY OPTIONS CAN BE SUBSTANTIAL, AND THEREFORE INVESTORS SHOULD UNDERSTAND THE RISKS INVOLVED IN TAKING LEVERAGED POSITIONS AND MUST ASSUME RESPONSIBILITY FOR THE RISKS ASSOCIATED WITH SUCH INVESTMENTS AND FOR THEIR RESULTS. PAST PERFORMANCE IS NOT NECESSARILY INDICATIVE OF FUTURE PERFORMANCE.

150 S Wacker Dr, Suite 2350 · Chicago, IL 60606 · Direct: 312-277-0050 Fax: 312-277-0150 · info@zaner.com

Copyright © 2010 Zaner Group LLC. All Rights Reserved.