

MIDWEST MARKET SOLUTIONS, INC

“THE LEADING EDGE IN COMMODITIES”

www.midwestmarketsolutions.com

Home Office:

5080 South Nettleton Avenue
Springfield, Missouri 65810

417-501-5132



Branch Office:

327 Broadway Avenue
Yankton, South Dakota 57078

866-203-9655

Branch Office:

1304 Main Avenue North
Thief River Falls, Minnesota 56701

218-378-4145

Branch Office:

407 1st Avenue
Verona, North Dakota 58490

701-432-5582

Branch Office:

154 Main Street
Springfield, Nebraska 68509

402-253-3003

Branch Office:

111 Spring Court Road
Storm Lake, Iowa 50588

605-660-1155

Subscribe to our Market Solutions Hedge Program Newsletter. Get a newsletter and text updates with specific hedging recommendations. Contact us for more information or visit www.midwestmarketsolutions.com.



THE MGEX WEEKLY NEWSLETTER

December 5, 2016

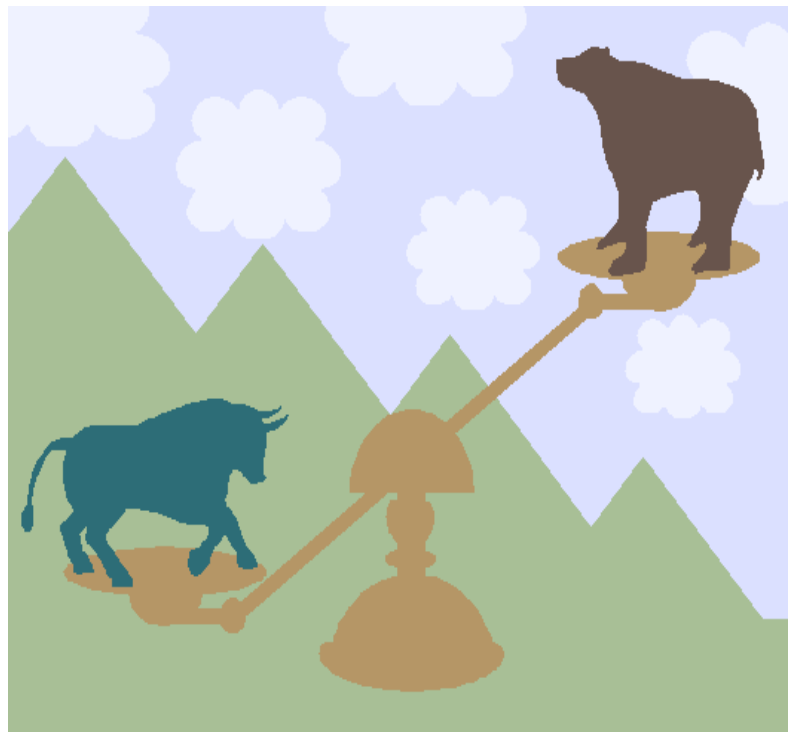
By: Brian Hoops, President
Midwest Market Solutions, Inc.

VISIT OUR WEBSITE AT

www.midwestmarketsolutions.com

FOLLOW US ON TWITTER AT

twitter.com/MidwestMarkets



WHEAT



ANALYSIS

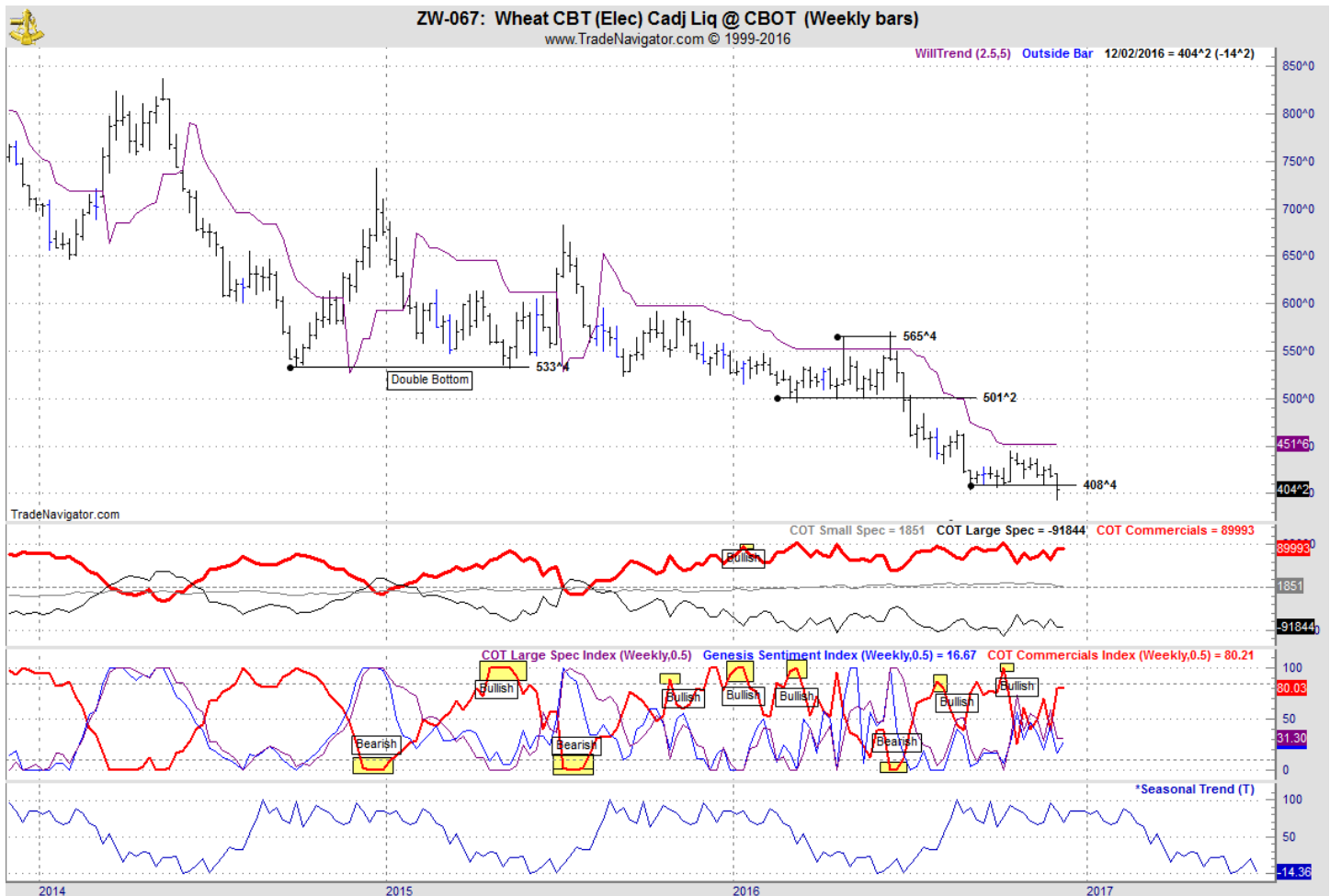
For the week, Chicago wheat closed \$.14 1/4 lower; Kansas City wheat closed \$.10 lower and Minneapolis wheat \$.20 higher. Last week, exporters did not report any private sales.

Weekly export sales for all wheat showed a total of 18.0 mb (489,500 mt) with 17.8 mb (483,500 mt) for the 2016-2017 marketing year. This was above the 10.8 mb (292,600 mt) needed this week to be on pace with USDA's November demand projection of 975 mb. Winter wheat is 97% planted and conditions were unchanged at 58% g/e. Last year, winter wheat was 53% g/e. December is when new crop winter wheat enters dormancy and wheat will not exit dormancy until March and until then, the market focus will be primarily on demand. Wheat harvest has begun in Australia and they will compete with U.S. wheat for world demand business. Australia is expected to harvest a new record crop this year at 31-32 mmts, besting the previous mark of 29.9 mmts in 2011/12. This crop, along with a projected record winter wheat seedings in Russia will limit the export opportunities for US wheat. This leaves wheat to move into feed rations or risk stocks building. The December USDA crop report looks to have little effect on prices as the USDA will likely show only a small decrease in demand.

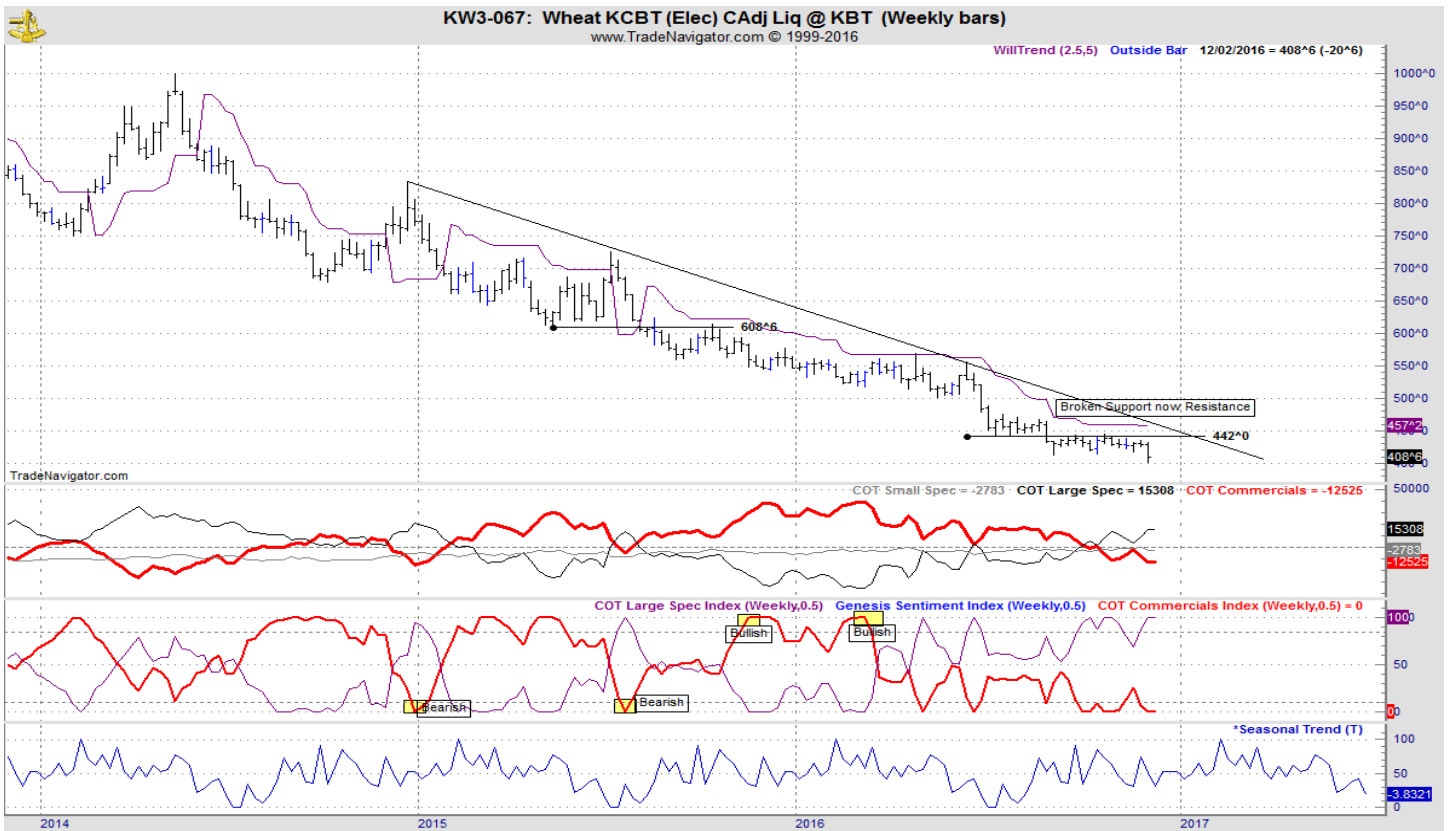
STRATEGY & OUTLOOK

A rally into weekly resistance was a great time to sell inventory.

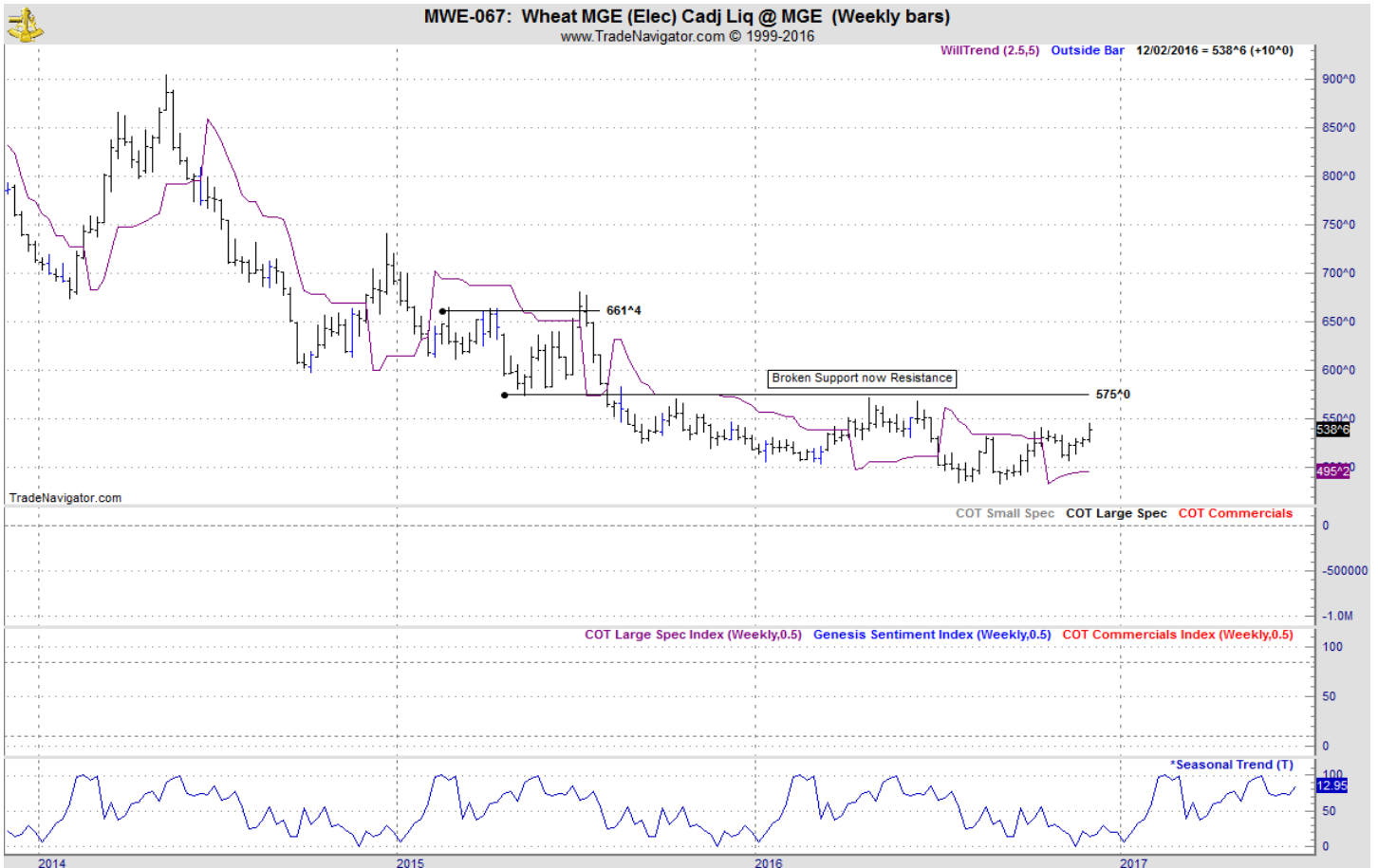
WEEKLY CHICAGO



WEEKLY KANSAS CITY



WEEKLY MINNEAPOLIS



COMPANY INFORMATION

Midwest Market Solutions is the leading edge in commodity marketing and trading. Midwest Market Solutions was established in March of 2002 and is a full-service commodity brokerage and marketing advisory service, clearing through R.J. O'Brien. The firm specializes in individual trading strategies for the investor, personalized marketing programs for individual farm operations as well as full-service and discount broker services. The home office is located in Springfield, Missouri with branch offices in Yankton, South Dakota; Storm Lake, Iowa; Thief River Falls, Minnesota and Verona, North Dakota. Midwest Market Solutions is committed to providing clients with the best information and service as possible. Midwest Market Solutions provides clients with written newsletters, trade research and hedging as well as trading advice.

Brian Hoops is President and Senior Market Analyst of Midwest Market Solutions, Inc. Brian can frequently be heard on radio stations across the country including KWMT, KAYL, KKIA, Ag News 890, Red River Farm Network, WHO Big Show and Commodity Wrap on Sirius XM radio. Brian can also be heard daily on the DTN doing his own market commentary program, seen as a frequent guest on RFD-TV as well as the Minneapolis Grain Exchange marketing hotline. Brian also writes several newsletters that are published throughout the Plains and the Midwest, covering the states of Iowa, Minnesota, North and South Dakota, Nebraska, Kansas, Montana, Wisconsin, Wyoming and Idaho. Brian has been quoted in the Wall Street Journal, Bloomberg, Reuters and Dow Jones newswires and U.S. Farm Report.

Services available at Midwest Market Solutions:

- | | | |
|-----------------------------|--------------------------------------|-------------------------|
| *Full Service Brokerage | *Market Quotes and Trading Platforms | *Twitter Feed |
| *Discount Brokerage Service | *Market Solutions Hedge Program | *Text Marketing Service |
| *Audio Market Commentaries | *Market Insider Daily Newsletter | |

Midwest Market Solutions does not necessarily take every trade recommendation listed herein. Hypothetical performance results have many inherent limitations, some of which are described below. No representation is being made that any account will or is likely to achieve profits or losses similar to those shown in fact there are frequently sharp differences between hypothetical performance results and the actual results subsequently achieved by any particular trading program. One of the limitations of hypothetical performance results is that they are generally prepared with the benefit of hindsight. In addition, hypothetical trading does not involve financial risk and no hypothetical trading record can completely account for the impact of financial risk in actual trading. For example, the ability to withstand losses or adhere to a particular trading program in spite of trading losses is material points which can also adversely affect actual trading results. There are numerous other factors related to the markets in general or to the implementation of any specific trading program, which cannot be fully accounted for in the preparation of hypothetical performance, results and all of which can adversely affect actual trading results.

This material has been prepared by a sales or trading employee or agent of Midwest Market Solutions and is, or is in the nature of, a solicitation. This material is not a research report prepared by Midwest Market Solutions's Research Department. By accepting this communication, you agree that you are an experienced user of the futures markets, capable of making independent trading decisions, and agree that you are not, and will not, rely solely on this communication in making trading decisions.

DISTRIBUTION IN SOME JURISDICTIONS MAY BE PROHIBITED OR RESTRICTED BY LAW. PERSONS IN POSSESSION OF THIS COMMUNICATION INDIRECTLY SHOULD INFORM THEMSELVES ABOUT AND OBSERVE ANY SUCH PROHIBITION OR RESTRICTIONS. TO THE EXTENT THAT YOU HAVE RECEIVED THIS COMMUNICATION INDIRECTLY AND SOLICITATIONS ARE PROHIBITED IN YOUR JURISDICTION WITHOUT REGISTRATION, THE MARKET COMMENTARY IN THIS COMMUNICATION SHOULD NOT BE CONSIDERED A SOLICITATION.

The risk of loss in trading futures and/or options is substantial and each investor and/or trader must consider whether this is a suitable investment. Past performance, whether actual or indicated by simulated historical tests of strategies, is not indicative of future results. Trading advice is based on information taken from trades and statistical services and other sources that Midwest Market Solutions believes are reliable. We do not guarantee that such information is accurate or complete and it should not be relied upon as such. Trading advice reflects our good faith judgment at a specific time and is subject to change without notice. There is no guarantee that the advice we give will result in profitable trades.