

MIDWEST MARKET SOLUTIONS, INC.

"THE LEADING EDGE IN COMMODITIES"

327 BROADWAY
YANKTON, SOUTH DAKOTA 57078
866-203-9655
605-260-3063 FAX
WWW.MIDWESTMARKETSOLUTIONS.COM



THE MARKET INSIDER NEWSLETTER

December 21, 2009

By: Brian Hoops, President
Midwest Market Solutions, Inc.

VISIT OUR WEBSITE AT www.midwestmarketsolutions.com FOR MORE INFORMATION.

Inside This Issue:

THE DECEMBER CATTLE ON FEED REPORT	2
CORN OUTLOOK	3,4
SOYBEAN OUTLOOK	5-7
WHEAT OUTLOOK	8-11
LIVE CATTLE OUTLOOK	12
FEEDER CATTLE OUTLOOK	13
LEAN HOG OUTLOOK	14
NEWS	15
NEWS	16
WEATHER	17
CALENDAR OF EVENTS	18
MARGIN REQUIREMENTS	19
COMPANY INFO	20
DISCLAIMER	20



WHEAT



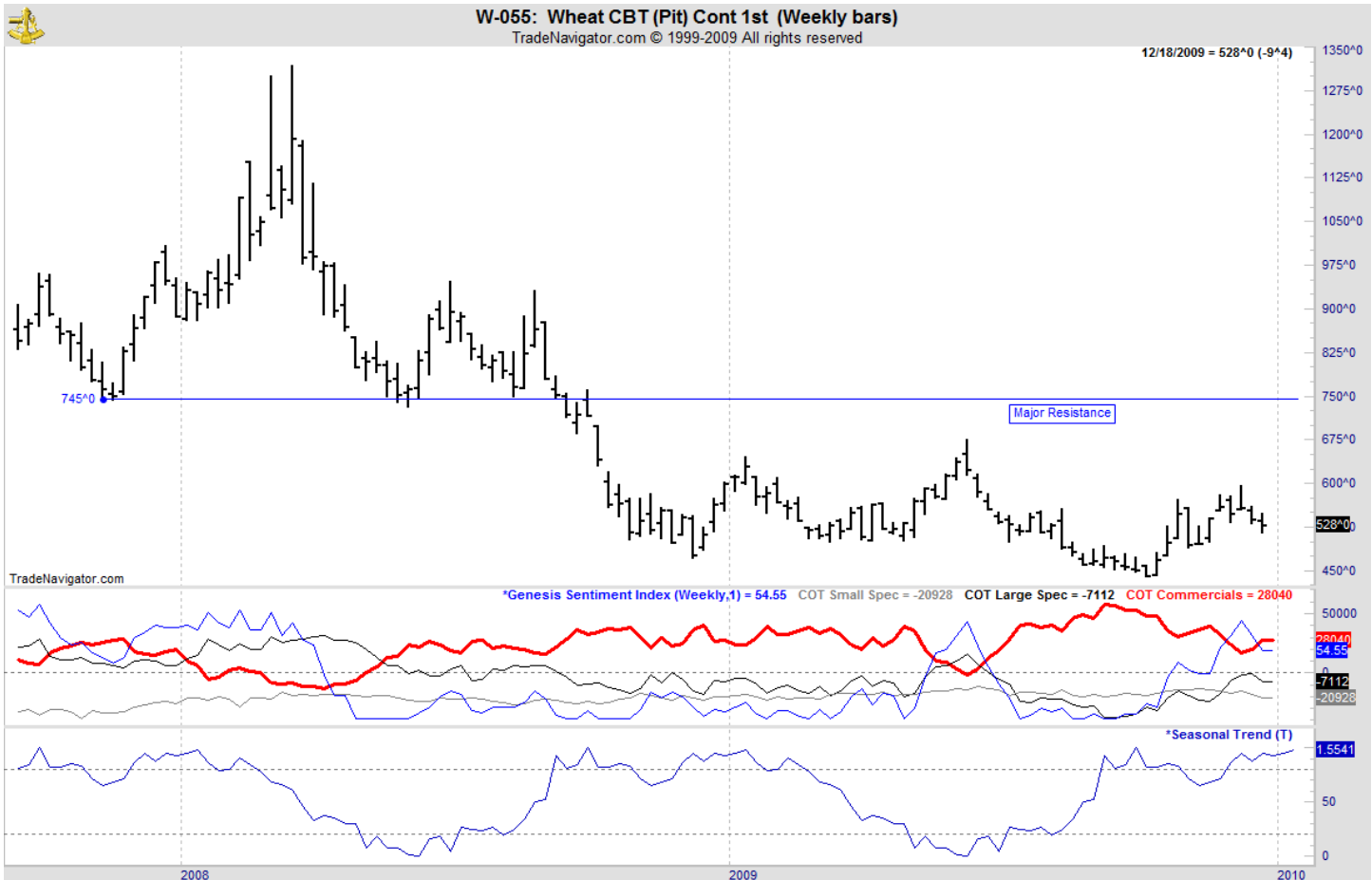
ANALYSIS

For the week, Chicago wheat closed \$.10 lower; Kansas City wheat \$.03 3/4 lower and Minneapolis wheat \$.08 1/4 lower. Egypt continues to show the U.S. that prices are too high to be competitive on the world market as they bypassed the U.S. for wheat purchases for the third consecutive week in favor of wheat from Russia and France. With the poor old crop fundamentals and high wheat ratings on the new crop, producers should be making sales of wheat on rallies that are inspired by fund demand. The winter wheat crop conditions report shows 63% of the winter wheat is in the good/excellent category, unchanged from last week. The weekly export sales report showed net sales of 345,000 metric tons were up 41 percent from the previous week and 2 percent from the prior 4-week average. Increases were reported for Japan (138,000 MT), Indonesia (68,000 MT, including 63,000 MT switched from unknown destinations), Nigeria (66,000 MT), Guatemala (28,200 MT, switched from unknown destinations), South Korea (23,400 MT), Mexico (21,400 MT), Haiti (20,900 MT, including 20,500 MT switched from unknown destinations), and the Dominican Republic (18,600 MT). The annual export pace remains well behind last year's pace. This year's exports stand at 565 mb vs. 776 mb a year ago. The U.S. need to export 12.41 mb each week to meet the USDA forecast of 875 mb.

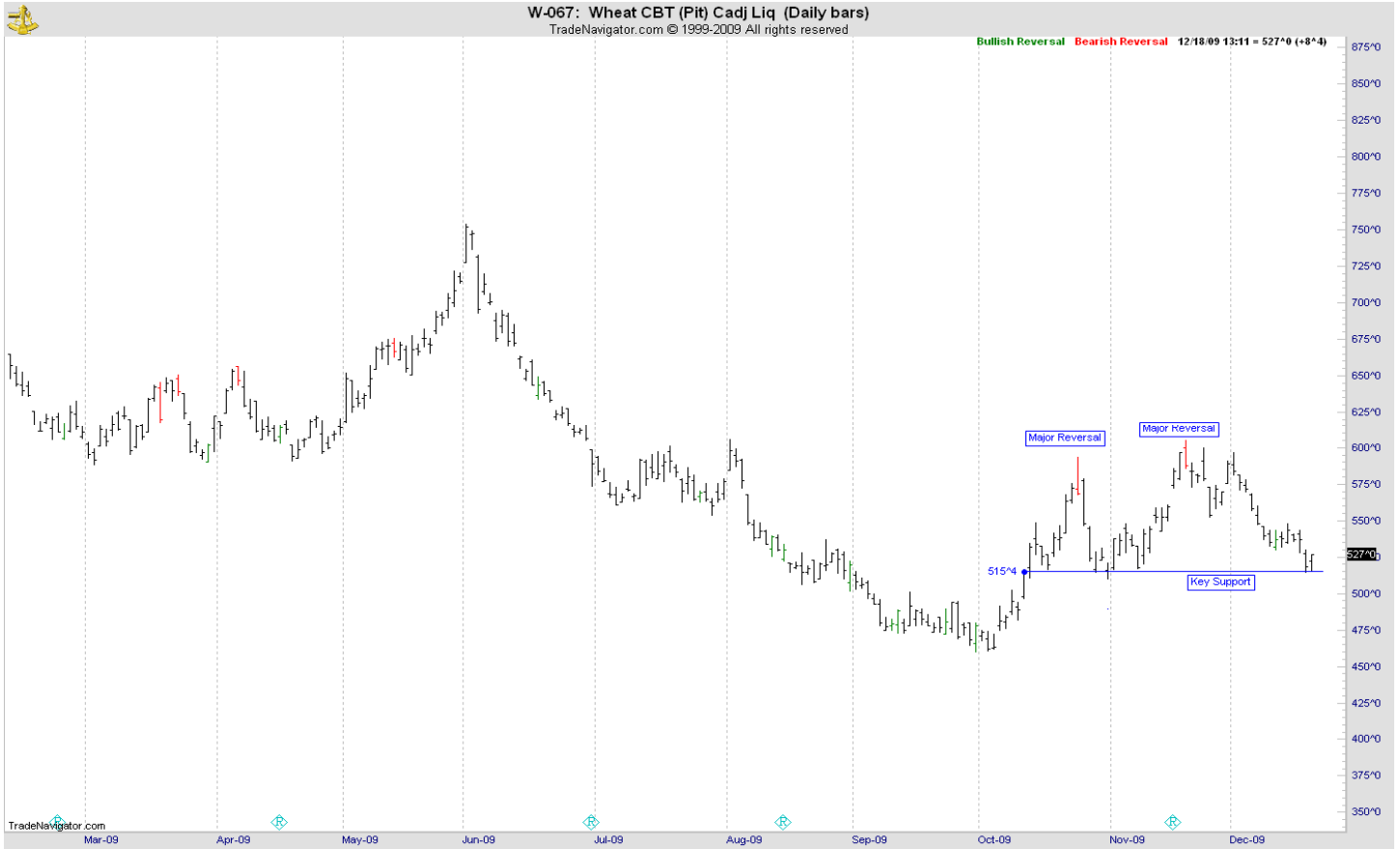
STRATEGY & OUTLOOK

Producers should be 100% sold of their 2009 crop. Producers should begin to scale into 2010 crop sales at \$6.05, \$6.40 and \$6.75 off the July Kansas City contract.

WEEKLY CHICAGO



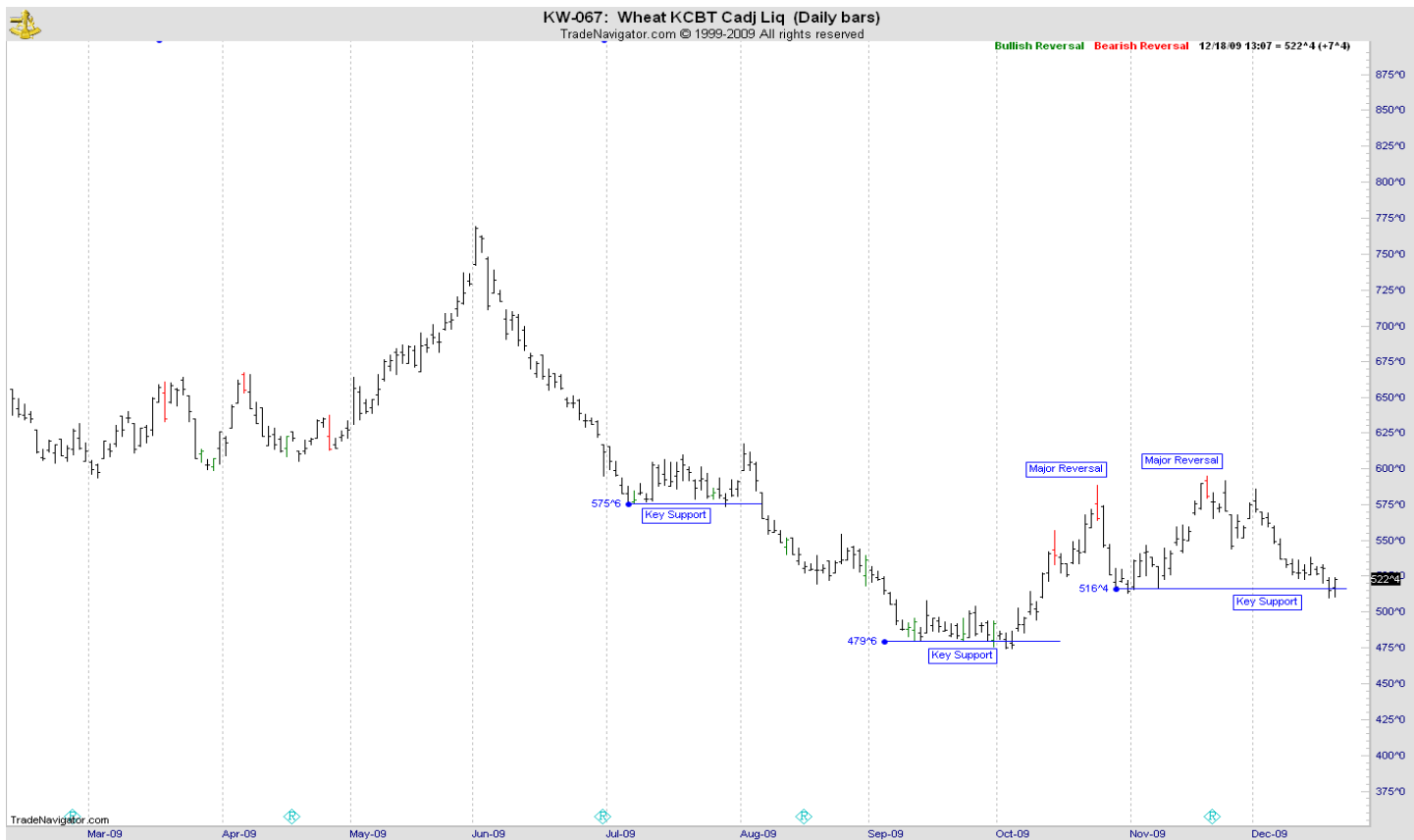
CHICAGO WHEAT



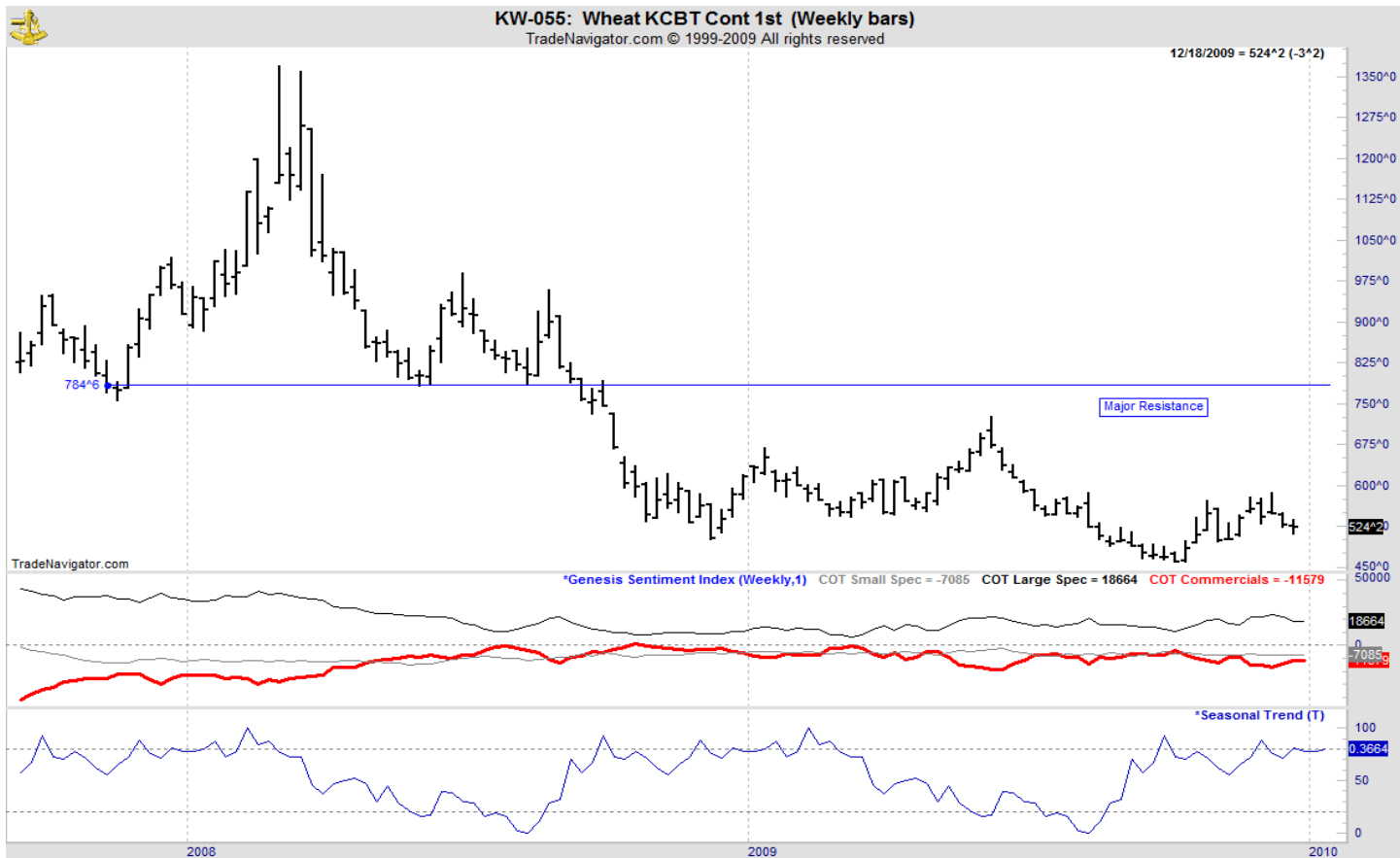
OATS



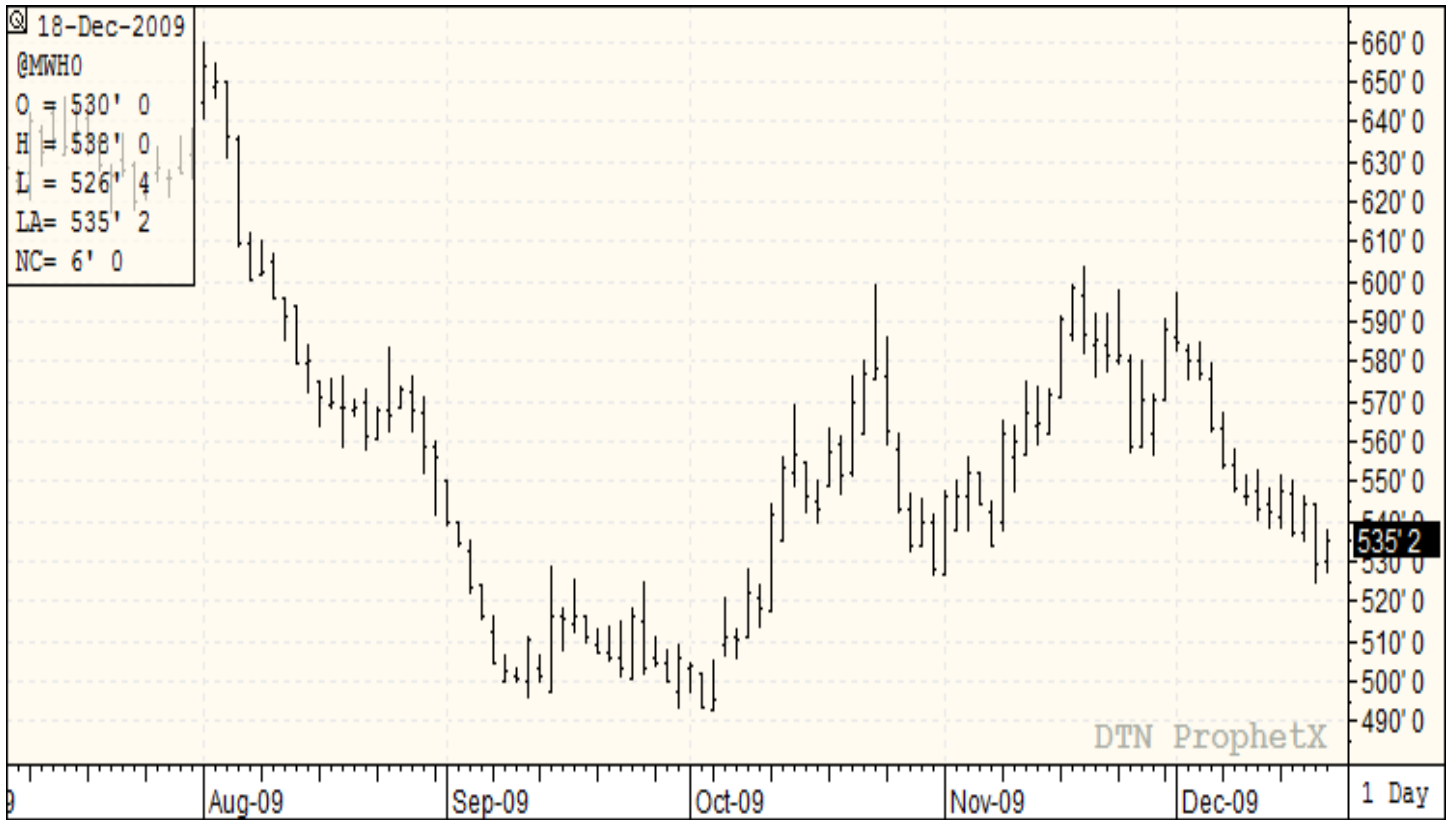
KANSAS CITY WHEAT



WEEKLY KANSAS CITY



MINNEAPOLIS WHEAT



WEEKLY MINNEAPOLIS

