

# MIDWEST MARKET SOLUTIONS, INC.

*"THE LEADING EDGE IN COMMODITIES"*

327 BROADWAY  
YANKTON, SOUTH DAKOTA 57078  
866-203-9655  
605-260-3063 FAX  
WWW.MIDWESTMARKETSOLUTIONS.COM



## THE MARKET INSIDER NEWSLETTER

December 28, 2009

By: Brian Hoops, President  
Midwest Market Solutions, Inc.

VISIT OUR WEBSITE AT [www.midwestmarketsolutions.com](http://www.midwestmarketsolutions.com) FOR MORE INFORMATION.

### Inside This Issue:

2009 YEAR IN REVIEW	2
CORN OUTLOOK	3,4
SOYBEAN OUTLOOK	5-7
WHEAT OUTLOOK	8-11
LIVE CATTLE OUTLOOK	12
FEEDER CATTLE OUTLOOK	13
LEAN HOG OUTLOOK	14
NEWS	15
NEWS	16
WEATHER	17
CALENDAR OF EVENTS	18
MARGIN REQUIREMENTS	19
COMPANY INFO	20
DISCLAIMER	20



# WHEAT



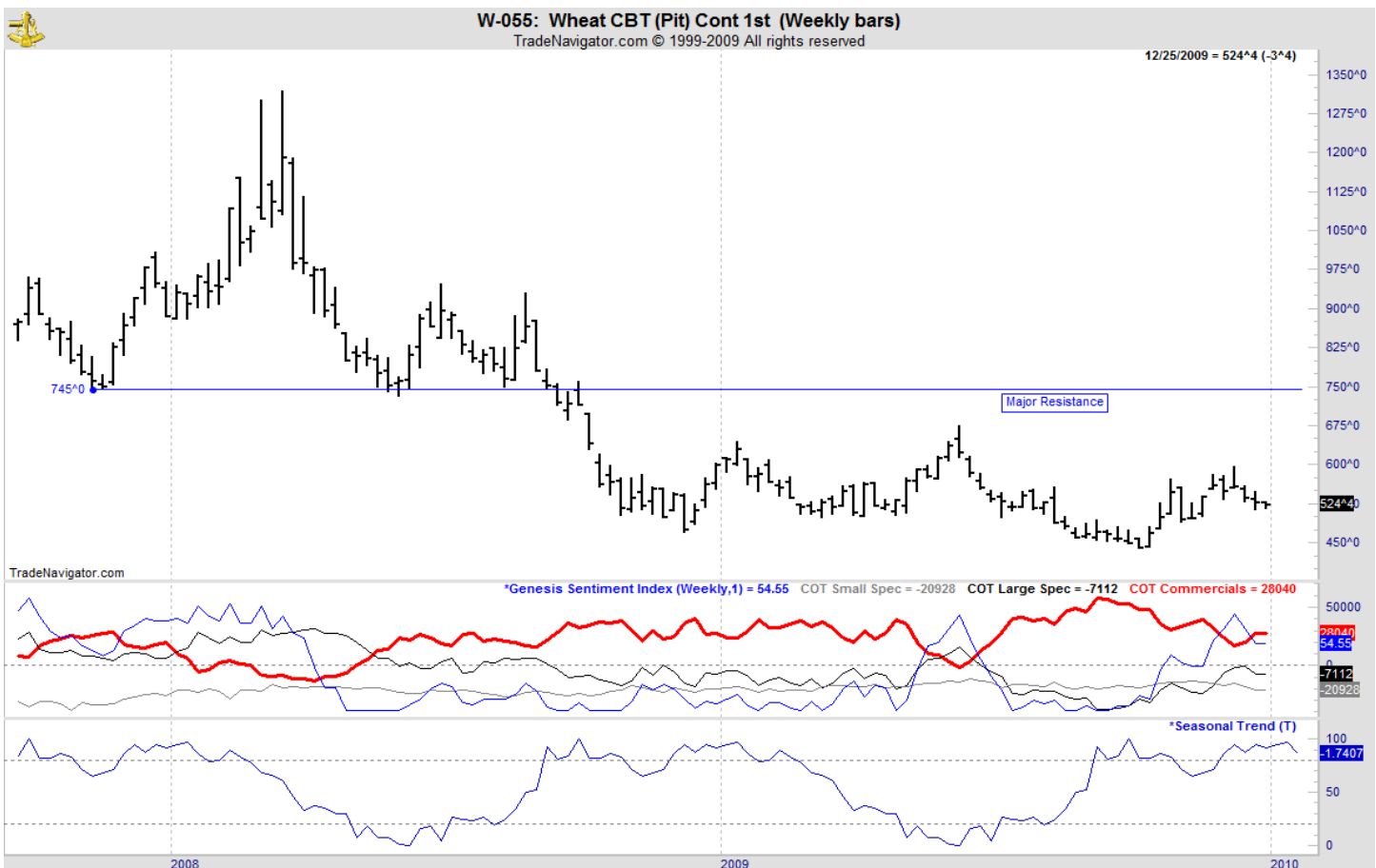
## ANALYSIS

For the week, Chicago wheat closed \$.03 lower; Kansas City wheat \$.02 3/4 lower and Minneapolis wheat \$.03 3/4 lower. The winter wheat crop has entered dormancy and crop ratings are very high. Winter wheat ratings are at 63% g/e, 1% behind last year at this time. With high wheat ratings on the new crop and very slow demand, producers should be making sales of wheat on rallies that are inspired by fund demand. The weekly export sales report showed net sales of 221,300 metric tons--a marketing-year low--were down 36 percent from the previous week and 34 percent from the prior 4-week average. Increases were reported for Japan (66,000 MT), Mexico (36,800 MT), Nigeria (27,900 MT), South Korea (22,100 MT), Colombia (18,700 MT), and the Philippines (17,900 MT). Exports of 327,700 MT were down 3 percent from the previous week and 9 percent from the prior 4-week average. The annual export pace remains well behind last year's pace. This year's exports stand at 573 mb vs. 785 mb a year ago. The U.S. need to export 12.59 mb each week to meet the USDA forecast of 875 mb.

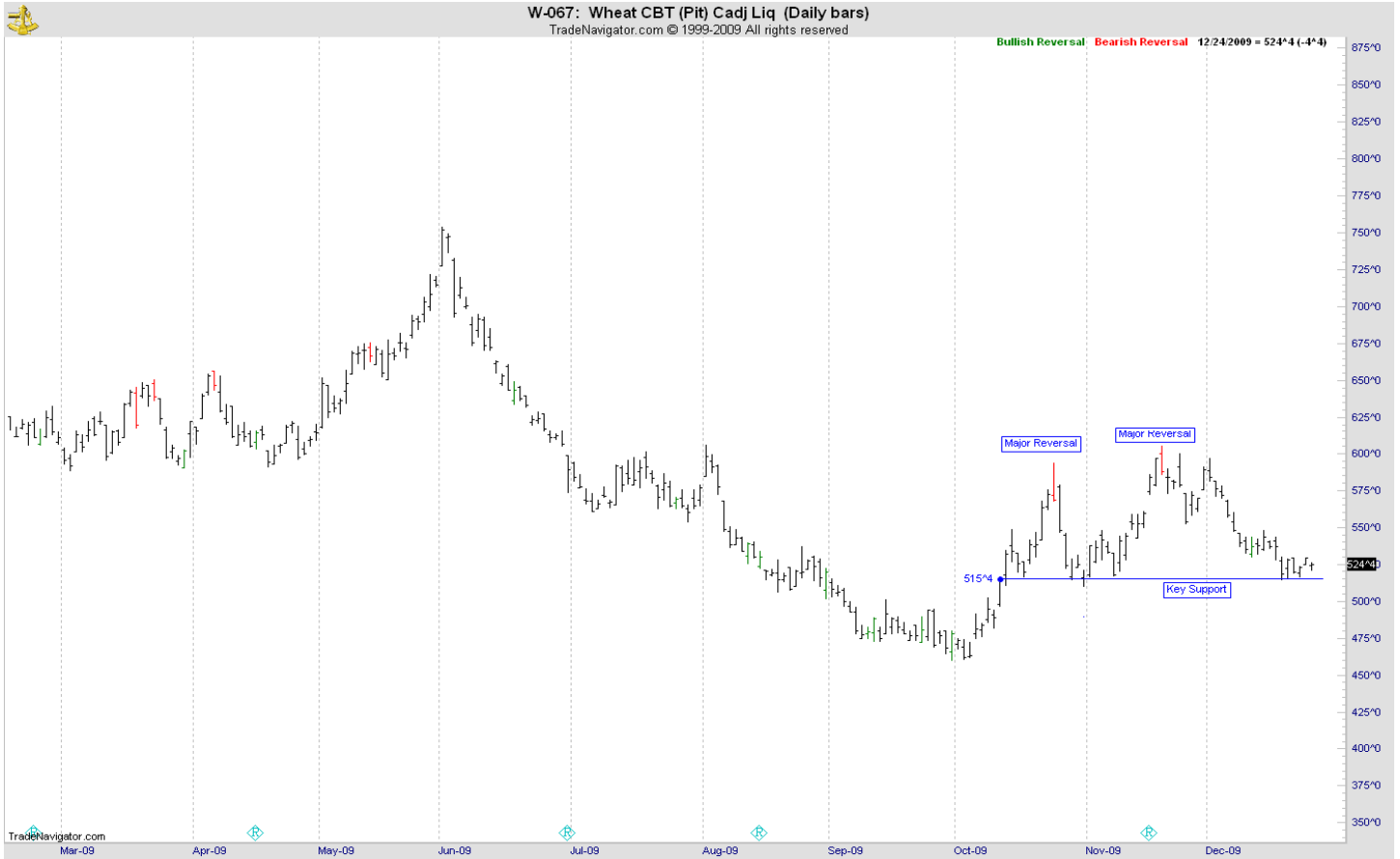
## STRATEGY & OUTLOOK

Producers should be 100% sold of their 2009 crop. Producers should begin to scale into 2010 crop sales at \$6.05, \$6.40 and \$6.75 off the July Kansas City contract.

## WEEKLY CHICAGO



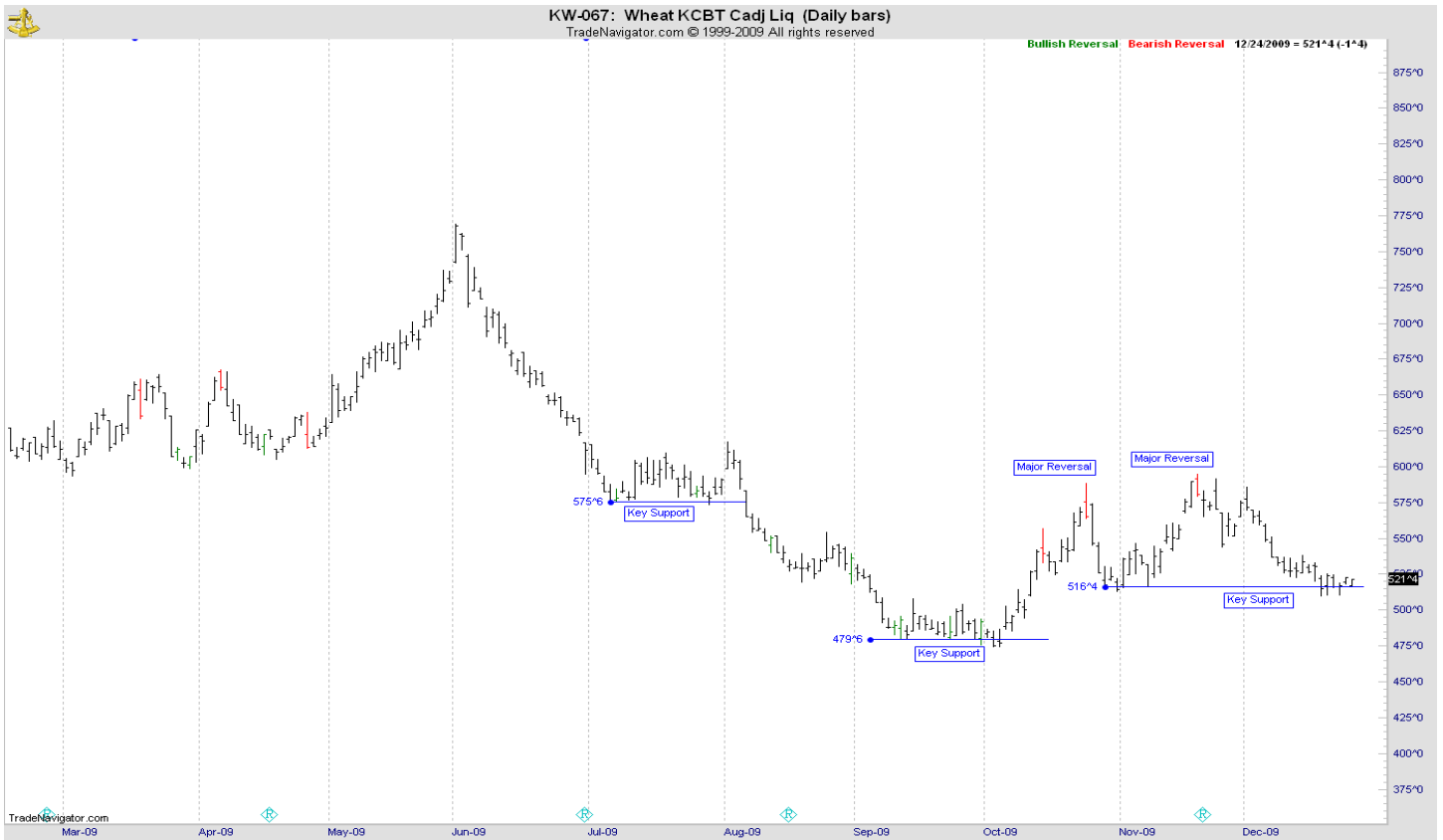
# CHICAGO WHEAT



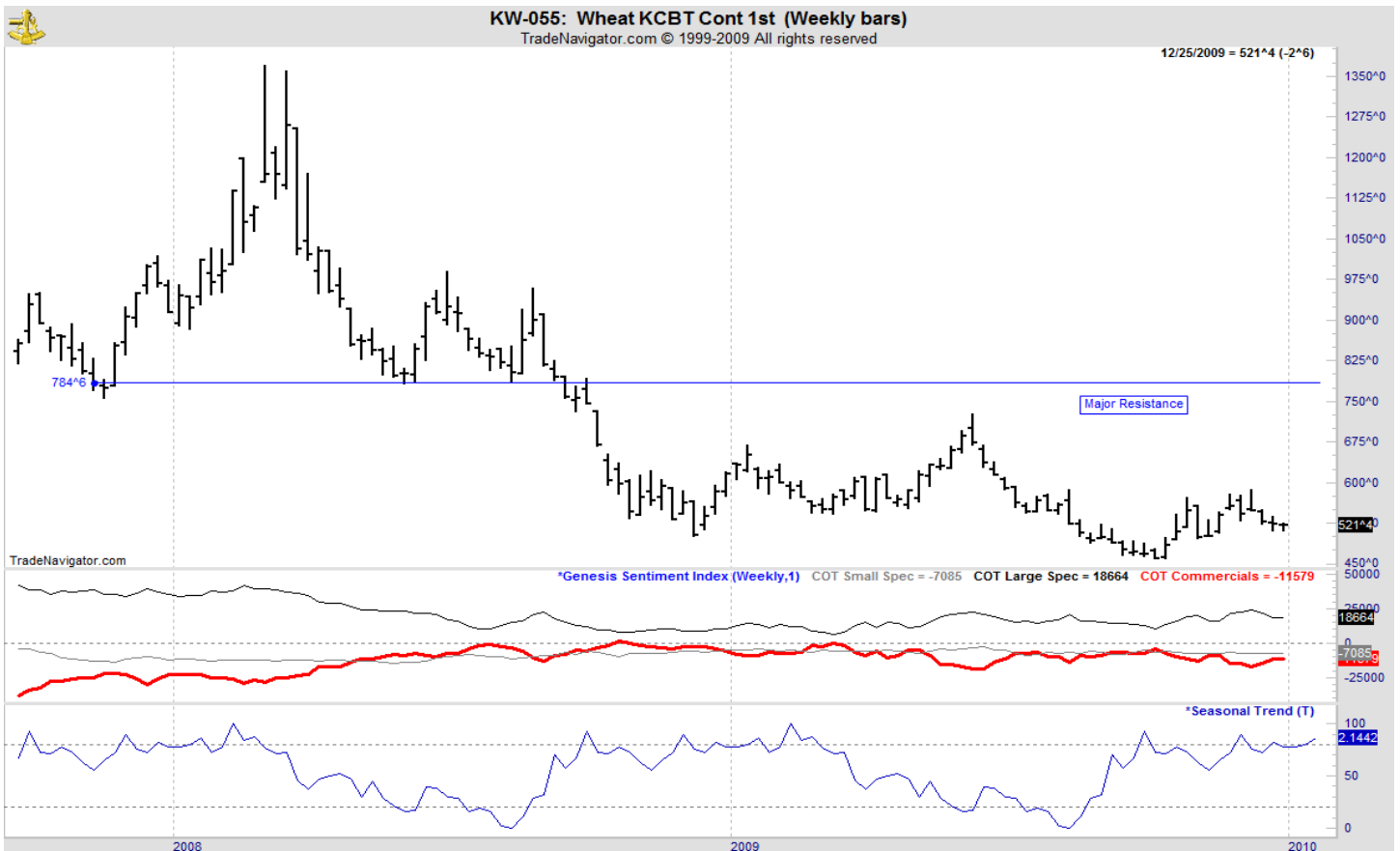
# OATS



# KANSAS CITY WHEAT



# WEEKLY KANSAS CITY



### MINNEAPOLIS WHEAT



### WEEKLY MINNEAPOLIS

