

The East Building

412 South 4th Street
Minneapolis, MN 55415

The East Building is one of the only Renaissance revival styled buildings in Downtown Minneapolis.

Built as an extension to Main Building, the East Building is one of the most unique structures in Minneapolis. Leasing tenants from a number of different businesses, the East building is the tallest of the three Grain Exchange buildings.

*For more information please contact
realestate@mgex.com or call us at
(612)321-7170*

Key Statistics:

Opened: **1909**

Floors: **12**

Architect: **Long, Lamoreaux and Long**

Square Feet: **Approximately 39,500 Sq. Ft.**

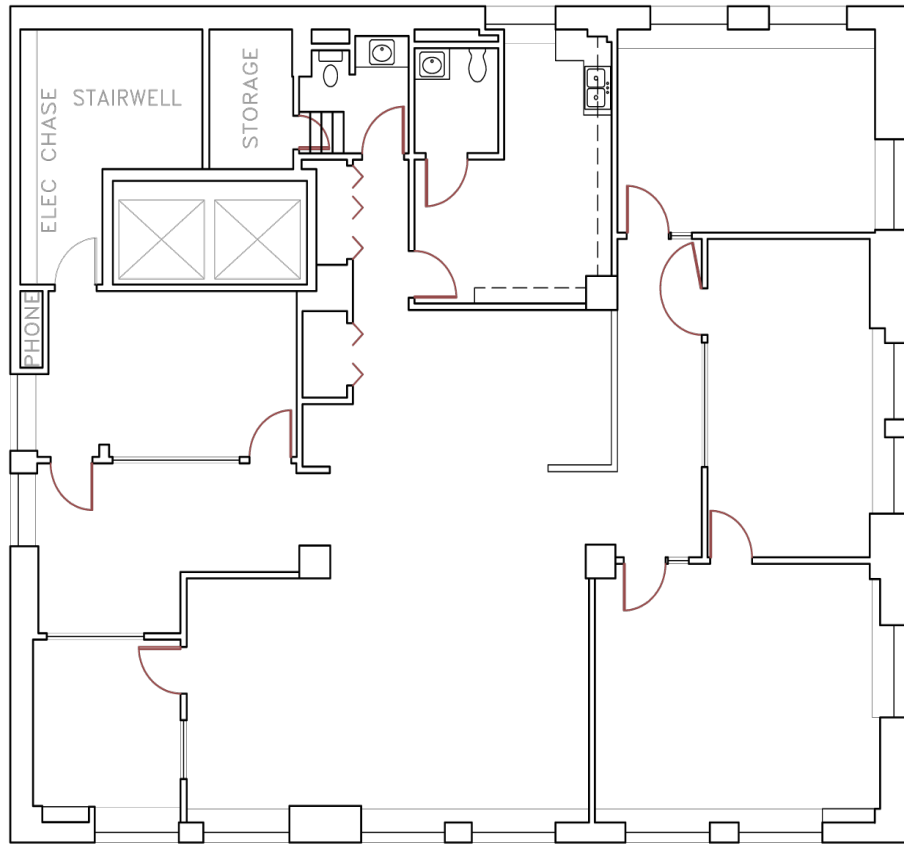


For layouts and further information on the East Building please see the back of this sheet.



Minneapolis Grain Exchange, Inc. - www.mgex.com/realestate

For Leasing Information: (612) 321-7170



Twelfth Floor, East Building

Usable Square Feet : 2,687
 Rentable Square Feet : 3,149



MacDonald & Mack
 Architects, LTD.
 Suite 712 Grain Exchange Building
 400 South Fourth Street
 Minneapolis, Minnesota 55415
 Tel: 612.341.4921
 Fax: 612.337.9463
 E-mail: MMA@mm.state.net



Minneapolis Grain Exchange, Inc.
 400 South 4th Street
 Minneapolis, MN 55415

www.mgex.com/realestate
realestate@mgex.com
 Contact: (612) 321-7170

