

The East Building

412 South 4th Street
Minneapolis, MN 55415

The East Building is one of the only Renaissance revival styled buildings in Downtown Minneapolis.

Built as an extension to Main Building, the East Building is one of the most unique structures in Minneapolis. Leasing tenants from a number of different businesses, the East building is the tallest of the three Grain Exchange buildings.

*For more information please contact
realestate@mgex.com or call us at
(612)321-7170*

Key Statistics:

Opened: **1909**

Floors: **12**

Architect: **Long, Lamoreaux and Long**

Square Feet: **Approximately 39,500 Sq. Ft.**

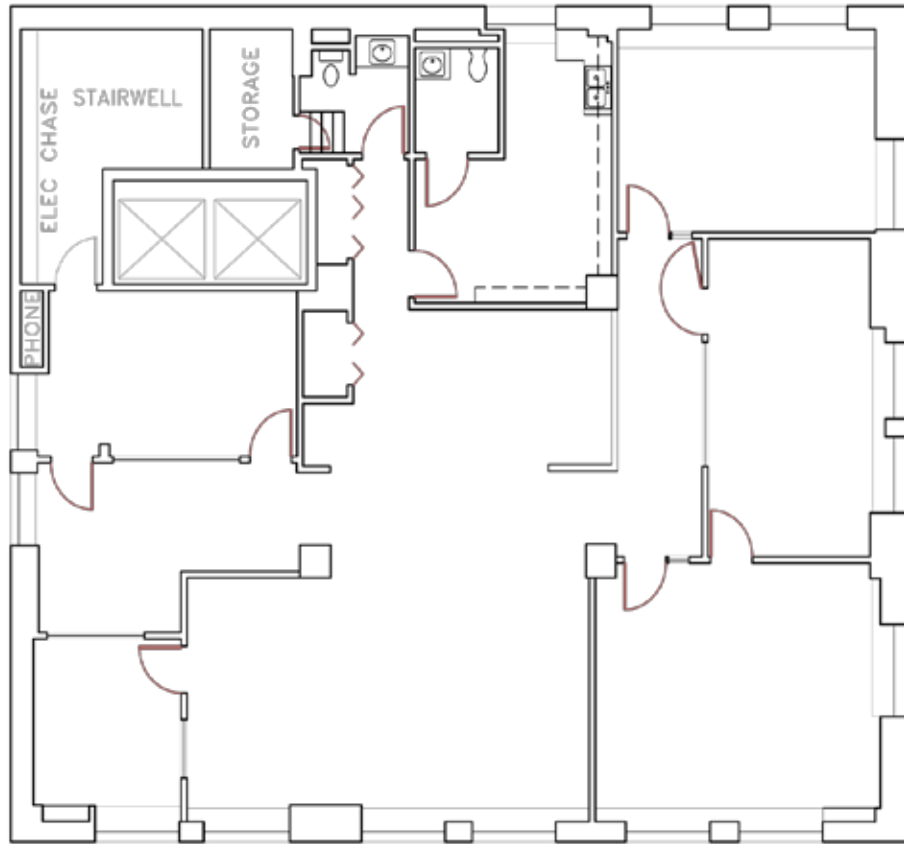


For layouts and further information on the East Building please see the back of this sheet.



Minneapolis Grain Exchange - www.mgex.com/realestate

For Leasing Information: (612) 321-7170



	<h2>Twelfth Floor, East Building</h2> <p>Usable Square Feet : 2,687 Rentable Square Feet : 3,149</p>	 <p>MacDonald & Mack Architects, LTD. <small>Suite 713 Grain Exchange Building 400 South Fourth Street Minneapolis, Minnesota 55415 Tel: 612.321.4801 Fax: 612.321.7643 E-mail: MAM@pmc.com</small></p>
---	--	--



Minneapolis Grain Exchange
400 South 4th Street
Minneapolis, MN 55415

www.mgex.com/realstate
realstate@mgex.com
Contact: (612) 321-7170

