

The Main Building

400 South 4th Street
Minneapolis, MN 55415

“It is a building to make you dream” -Erik Ringham, the Star Tribune.

Established in 1902, the Main Building is the original Minneapolis Chamber of Commerce and was one of the first buildings in Minneapolis to be built with a steel interior structure. The Main Building currently houses the main offices of MGEX along with retail tenants such as Barkalow’s Store and the Grain Exchange Barbershop.

*For more information please contact
(612) 321-7170 or realestate@mgex.com.*



Key Statistics:

Opened: **1902**

Floors: **10**

Architect: **Kees and Colburn**

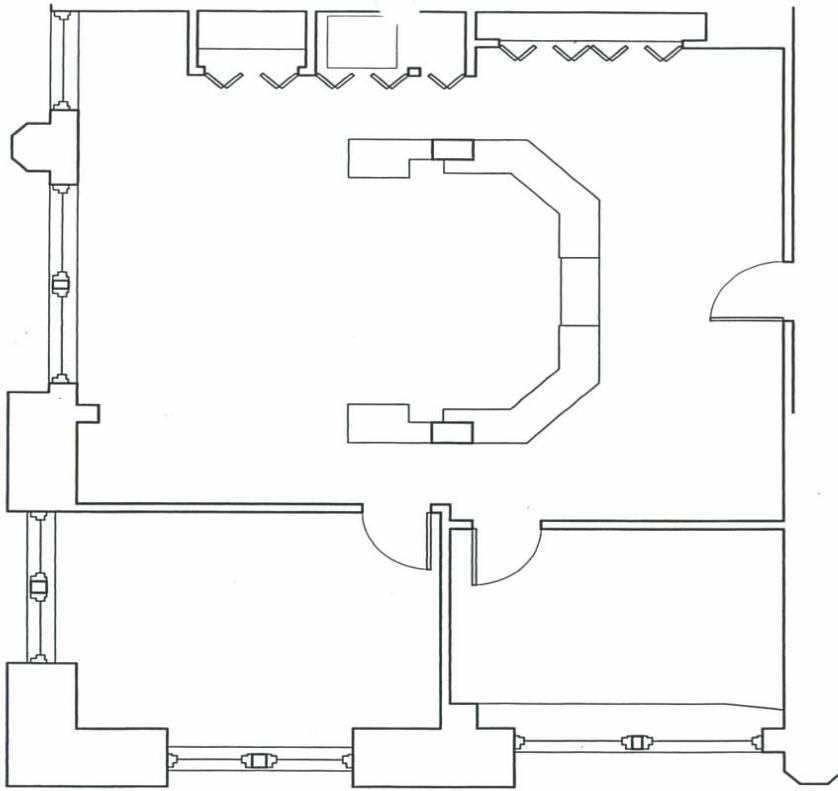
Square Feet: **Approximately 155,500 Sq. Ft.**

For layouts and further information on the Main Building please see the back of this sheet.



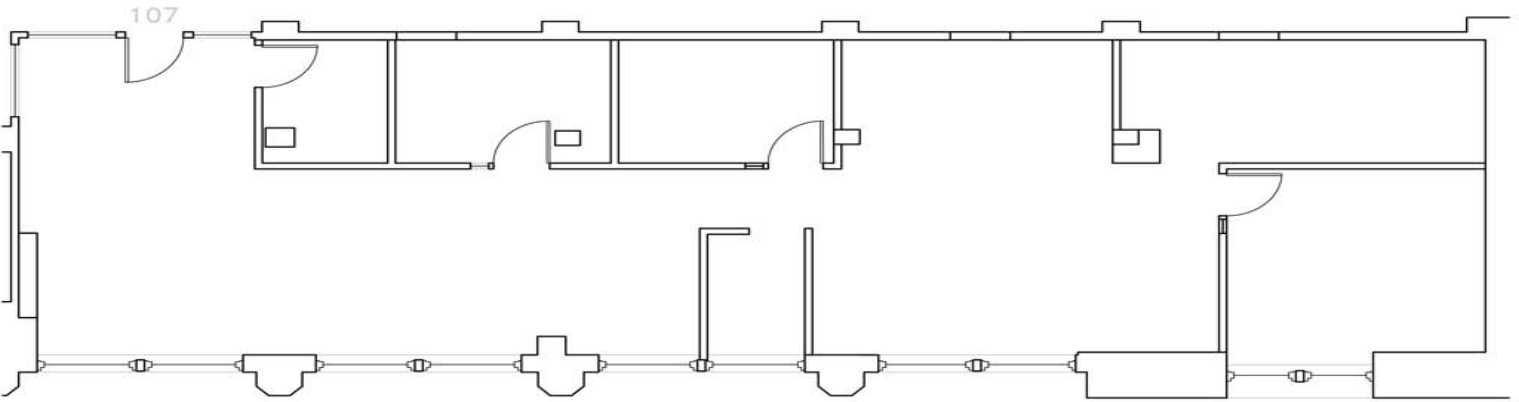
Minneapolis Grain Exchange, Inc. - www.mgex.com/realestate

For Leasing Information: (612) 321-7170



0ft 2ft 4ft 6ft 8ft 10ft 12ft 14ft 16ft

	<p align="center">Suite 109, Main Building Usable Square Feet : 1,225 Rentable Square Feet : 1,436</p>	 <p>MacDonald & Mack Architects, L.T.D. Suite 111, 1000 Exchange Building 400 South 4th Street Minneapolis, MN 55415 Tel: 612.321.4923 E-mail: 1000@macd.com</p>
--	---	--



	<p align="center">Suite 107, Main Building Usable Square Feet : 1,842 Rentable Square Feet : 2,159</p>	 <p>MacDonald & Mack Architects, L.T.D. Suite 111, 1000 Exchange Building 400 South 4th Street Minneapolis, MN 55415 Tel: 612.321.4923 E-mail: 1000@macd.com</p>
---	---	---

Minneapolis Grain Exchange, Inc.
 400 South 4th Street
 Minneapolis, MN 55415

www.mgex.com/realestate
realestate@mgex.com
 Contact: (612) 321-7170

