

# The North Building

301 4th Ave S  
Minneapolis, MN 55415

*The North Building's six-month construction in 1928 was widely reported to be "a new record of building in the Northwest".*

The North Building is the newest of the three Grain Exchange buildings. This building is home to the MGEX Real Estate office as well as the new MGEX Exchange Room where trading now takes place in both electronic and open outcry formats. Other offices are in the North Building including the U.S. Post Office.

*For more information please contact  
(612) 321-7170 or [realestate@mgex.com](mailto:realestate@mgex.com).*

## Key Statistics:

Opened: **1928**

Floors: **10**

Architect: **Bertrand, Chamberlin and Edmund  
J. Prondzinski**

Square Feet: **Approximately 131,000 Sq. Ft.**

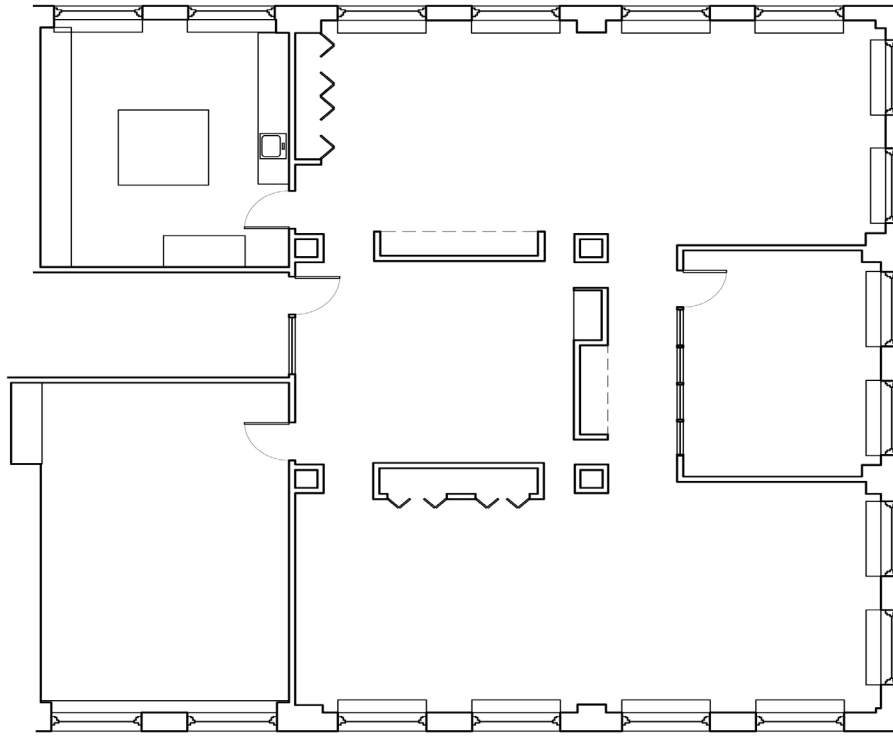


For layouts and further information on the North Building please see the back of this sheet.



Minneapolis Grain Exchange, Inc. - [www.mgex.com/realestate](http://www.mgex.com/realestate)

For Leasing Information: (612) 321-7170



0ft 4ft 8ft 12ft 16ft 20ft 24ft 28ft 32ft

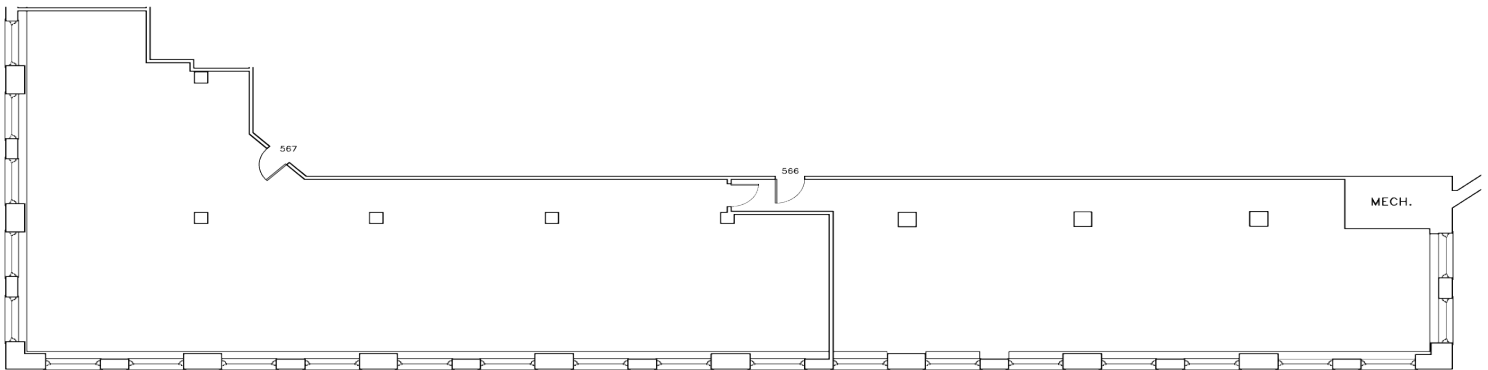


## Suite 365, North Building

Usable Square Feet : 3,097  
Rentable Square Feet : 3,667



MacDonald & Mack  
Architects, LTD.  
Suite 713 Grain Exchange Building  
400 South Fourth Street  
Minneapolis, Minnesota 55415  
Tel: 612 321 4021  
Fax: 612 321 5861  
E-mail: MMA@mm.state.net



## Suites 566-567, North Building

Usable Square Feet : 4,257  
Rentable Square Feet : 5,040



MacDonald & Mack  
Architects, LTD.  
Suite 713 Grain Exchange Building  
400 South Fourth Street  
Minneapolis, Minnesota 55415  
Tel: 612 321 4021  
Fax: 612 321 5861  
E-mail: MMA@mm.state.net

Minneapolis Grain Exchange, Inc.  
400 South 4th Street  
Minneapolis, MN 55415

[www.mgex.com/realstate](http://www.mgex.com/realstate)  
[realstate@mgex.com](mailto:realstate@mgex.com)  
Contact: (612) 321-7170

