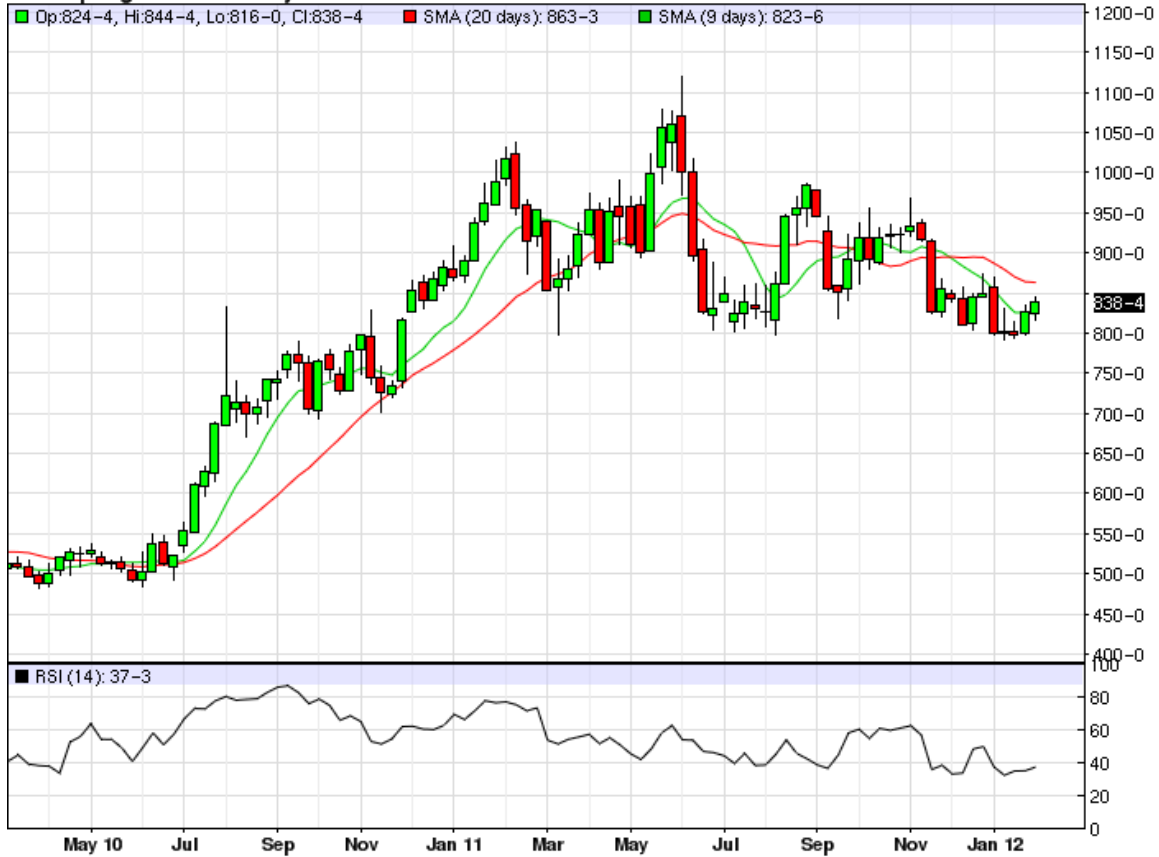


Close of week, weekly bar chart; February 3, 2012
 Provided by [Zaner Group, www.zaner.com](http://www.zaner.com)
 (800) 621.1414

Trading futures and options is speculative in nature and involves substantial risk of loss. All known news and events have already been factored into the price of the underlying commodities discussed.

MW - Spring Wheat - Weekly Candlestick Chart



Week ending February 3, 2012

Chart source: www.Markethead.com/2.0 Quote data provided by Barchart.com
 20-period simple moving average shown as green line; 9-period simple moving average shown as red line.
 14-period Relative Strength Indicator (RSI) shown below the chart.

The main purpose of the RSI study is to measure the market's strength and weakness. A high RSI, above 70, suggests an overbought or weakening bull market. Conversely, a low RSI, below 30, implies an oversold market or dying bear market. Our RSI uses a 14 Period, defined as the period for which to compute the indicator. Notice that the "spread" between the 9 and 20 day moving averages has been slowly but steadily widening since they crossed on December 5, 2011.

Congratulations to MGEX, which reported total futures and options trading for its flagship Hard Red Spring Wheat (HRSW) contract in January increased more than 36 percent when compared to December 2011. Futures trading volume was 34 percent higher than the previous month while options trading increased 17 percent over December 2011. January year over year options volume grew by a staggering 1,100 percent. (Source: Feb 1, 2012 MGEX press release)

Create your own customized charts at [Markethead.com \(www.markethead.com\)](http://www.markethead.com) web-portal.

Futures, options and forex trading is speculative in nature and involves substantial risk of loss. All known news and events have already been factored into the price of the underlying commodities discussed. Every technical study and tool carries risk of loss and no strategy or indicator will be successful 100% of the time, including moving averages, patterns and RSI.